



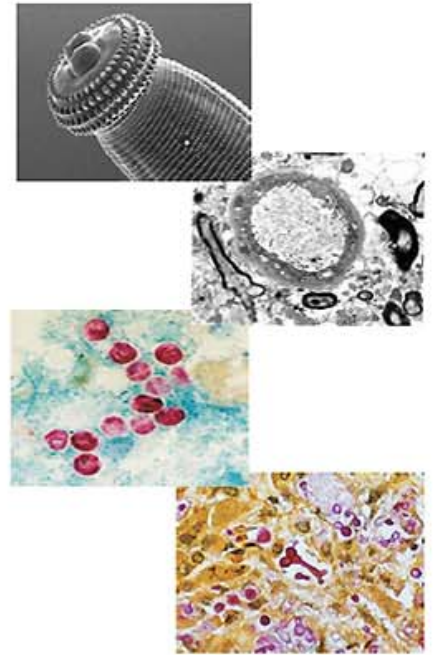
Department of Tropical Pathology
Faculty of Tropical Medicine, Mahidol University

Price List of Cytopathology Services (1-3 days)

1. Pap (cervical, vaginal) smear 100 baht/sample/method
 - Papanicolaou stain
 - Hematoxylin and eosin stain
 - Special stain
2. Urine, Pleural effusion, Ascitic fluid, Cerebrospinal fluid
 - Papanicolaou stain 150 baht/sample
 - Hematoxylin and eosin stain 150 baht/sample
 - Special stain 100 baht/sample/method
3. Sputum, Pus
 - Hematoxylin and eosin stain 100 baht/sample
 - Special stain 100 baht/sample/method
4. Stool 200 baht/sample/method
 - Fat - Cryptosporidium
 - Cyclospora - Isospora
 - Microsporidia - Others

Department of Tropical Pathology
Faculty of Tropical Medicine
Mahidol University
420/6 Ratchawithi Road, Bangkok 10400, Thailand
Tel. (66) 0-2644-7938 , 0-2354-9100 to 19
ext. 1670 : office/secretary
1679 : pathological laboratory
1622 : electronmicroscopy Laboratory

Fax (66) 0-2644-7938 , 0-2354-9139



Price List of Histopathology Services (3-5 days)

1. Small organs (pleural biopsy, lung biopsy, GI biopsy, skin biopsy)
 - Hematoxylin and eosin stain 300 baht/sample/method
2. Large organs
 - Hematoxylin and eosin stain 400 baht/sample
3. Special stain 100 baht/sample/method
 - Reticulum - Pigments
 - Collagen - Minerals
 - Elastic fiber - Gram stain
 - Glycogen - Fungus
 - Mucin - Viral inclusion bodies
 - Amyloid - Acid fast bacilli
 - Others
4. Permanent Slides (Plants, Animals, Worm)
 - Hematoxylin and eosin stain slide and interpretation 300 baht/sample
 - Hematoxylin and eosin stain slide 225 baht/sample
 - Special stain slide 100 baht/sample /method
 - Paraffin section 3-5 slides 204 baht/sample
 - Serial section 400 baht/sample (not more than 100 section)

Laboratory Services

Department of Tropical Pathology



The Department of Tropical Pathology is one of the eleven departments in the Faculty of Tropical Medicine, located on the second and seventh floor of the Research Building for Tropical Diseases. The Department is responsible for teaching tropical pathology in the M.Sc./Ph.D. degree programs in tropical medicine, and the D.T.M. & H. course. Short course and training programs related to tropical pathology and electron microscopy are provided occasionally upon request. Research activities have been performed using light microscopy and electron microscopy. Routine services for the Hospital for Tropical Diseases include histopathological diagnosis, cytopathological diagnosis and autopsy. We also welcome surgical specimens for research and diagnosis from other hospitals or institutes. Three electron microscopes are available for research work on the electron microscopy of tropical diseases, their vectors and the ultrastructural study.

Price List of Electronmicroscopy Services

1. TEM (Hitachi H - 7000)
 - 1.1 Negative staining (5 grids/sample) 260 baht/sample
 - 1.2 Specimen embedding (OsO₄ included) 2,500 baht/sample
 - 1.3 Specimen embedding (OsO₄ not included) 1,200 baht/sample
 - 1.4 Specimen sectioning and staining (5 grids/sample) 600 baht/sample
 - 1.5 TEM service 640 baht/hour
 - 1.6 Photograph (film developing included) 150 baht/film
 - 1.7 T.V. image output 100 baht/hour
2. SEM (Hitachi S-2360 N; S-2150)
 - 2.1 Specimen mounting (3 stubs) 150 baht
 - 2.2 Specimen coating with gold 400 baht/time
 - 2.3 Specimen preparation and mounting (3 stubs; OsO₄ included) 1,100 baht/sample
 - 2.4 Specimen preparation and mounting (3 stubs; OsO₄ not included) 960 baht/sample
 - 2.5 SEM service 800 baht/hour
 - 2.6 Photograph and developing negative film 80 baht/film
 - 2.7 Developing film 200 baht/roll
 - 2.8 Service for Semicaps program analysis of SEM 140 baht/hour
 - 2.9 Image printing using the Thermo printer 25 baht/image
 - 2.10 Image file storage in the diskette (from Semicaps program) 70 baht/diskette

3. Positive print on photographic paper
 - 3.1 paper size 3.5" x 5", each 30 baht
 - 3.2 paper size 5" x 7", each 50 baht
 - 3.3 paper size 8" x 10", each 100 baht
4. Self service for using the equipment
 - 4.1 Dark room (film or paper developer and photographic paper not included) 200 baht/hour
 - 4.2 Critical Point Dryer 360 baht/time
 - 4.3 Vacuum Evaporator 80 baht/time
 - 4.4 Ion Sputter Coater 300 baht/time
 - 4.5 Ultramicrotome 200 baht/hour
 - 4.6 Glass knives strip (0.64 x 2.5 x 40 cm.; 16 glass knives) 400 baht
 - 4.7 Coating Copper grid 30 baht/grid
 - 4.8 Air condition (after office hour) 200 baht/hour

