

A CONCEPT OF ECO- HEALTH EDUCATION AND ITS IMPORTANCE



Tokyo Gakugei University, JC- GSHR

Takashi Asakura, Profressor, Ph.d

**WHAT IS ECOHEALTH?
WHAT IS ECOHEALTH EDUCATION?**

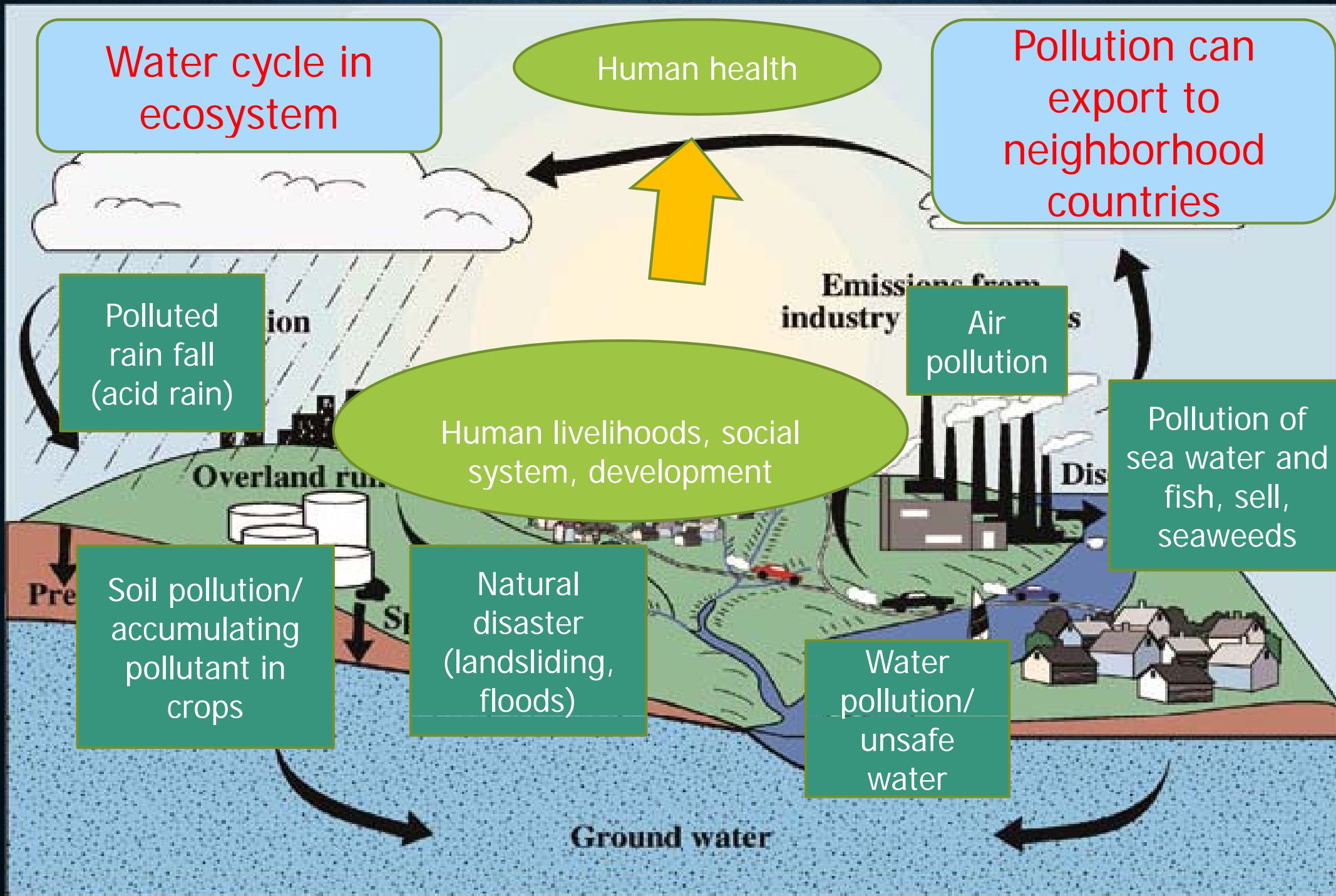
ASIAN VALUE ON HUMAN AND ENVIRONMENTS

- Emphasize harmonious relationship between human life and environment.
- Notion that human being is a part of earth's environment and global biosphere.

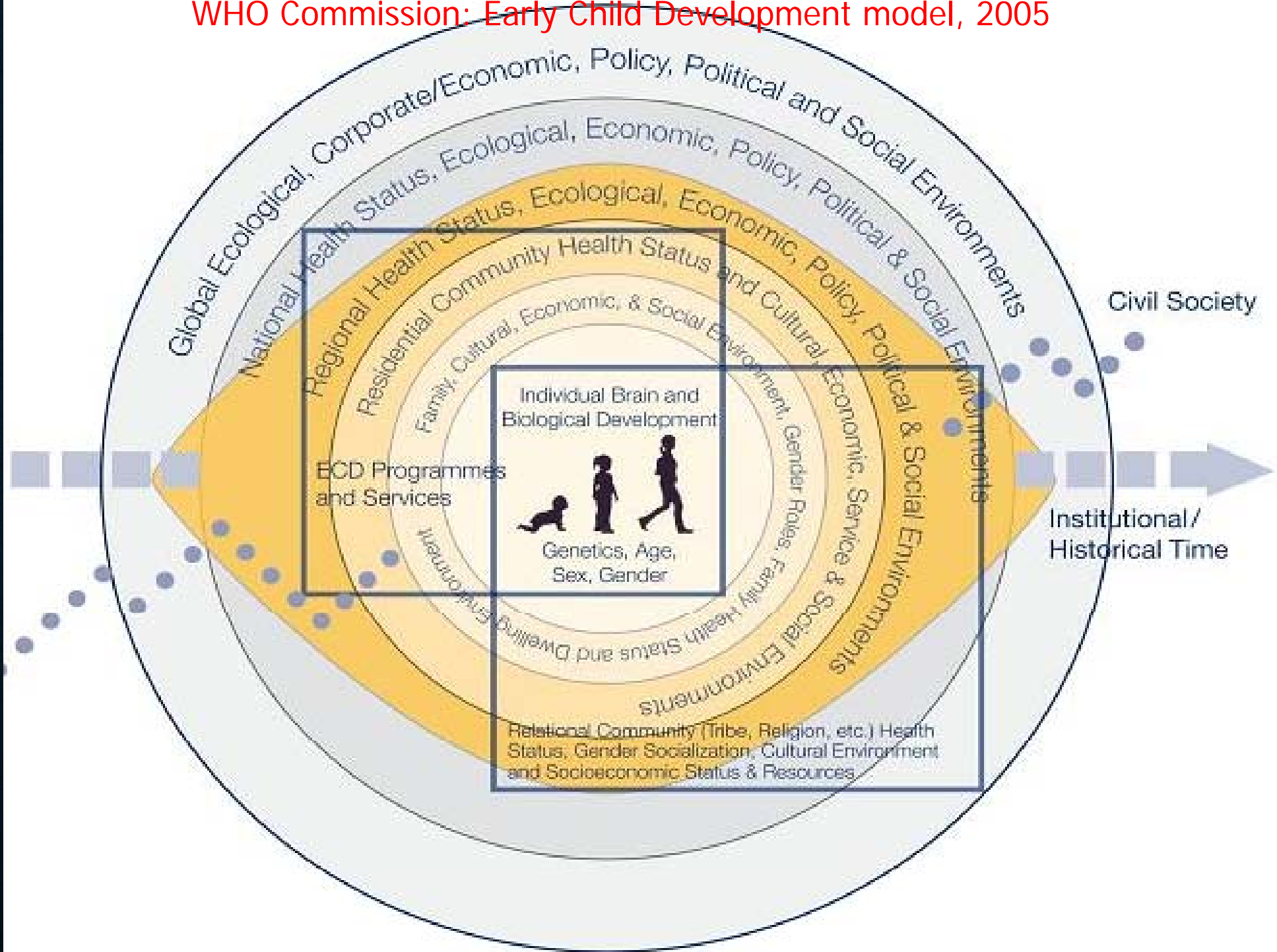
- **The key notion of ecohealth is that human health is determined by social and ecosystems.**
- **Ecohealth is an approach that intend to build sustainable relationship between human health development and ecosystem.**

- If we could make Health Promoting School sustainable, it would be suitable for ecohealth.
- Risk mapping, resource mapping, assets mapping could be tools for ecohealth.
- Students ought to learn not only health literacy but also awareness for environment.
- In addition, students are expected to acquire good assets or capacities to meet their future healthy and sustainable living ways.

I will give an example of the interconnectedness.



WHO Commission: Early Child Development model, 2005



DETERMINANTS OF HUMAN HEALTH EMBEDDED IN MULTILEVEL OF ECOSYSTEM

- Example of Multilayers of ecosystem
 - 1) Innate individual traits (Individual level)
 - 2) Family and social (eg. school) environments
 - 3) Community, neighborhood environments
 - 4) Regional social and ecosystems
 - 5) National level environments/ecosystems
 - 6) Global level environments/ecosystems

- **Environment education** (insufficient in health matter)

 - Awareness and sensitivity

 - Knowledge and understanding to environment and environment problems, ecosystem

 - Attitudes

 - Skills

 - Participation

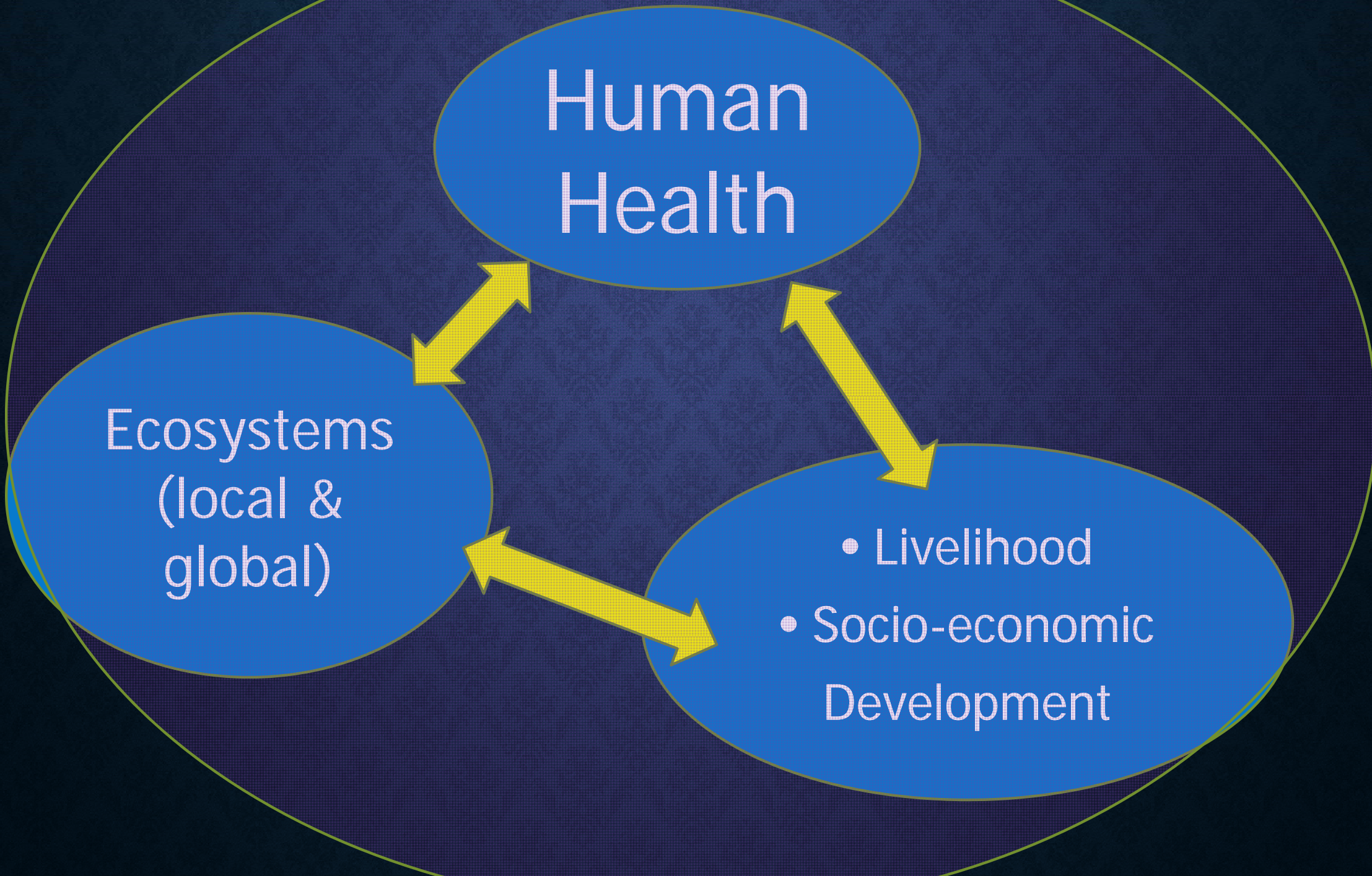
- **Health education** (insufficient in ecosystem matter)

 - Health Education as "compris[ing] [of] consciously constructed opportunities for learning involving some form of communication designed to **improve health literacy**, including **improving knowledge, and developing life skills** which are conducive to individual and community health (WHO, 1998)

Ecohealth education as a new subject.

By integrating environment education and health education together and extending them, we are creating ecohealth education as a comprehensive subject in Lao PDR.

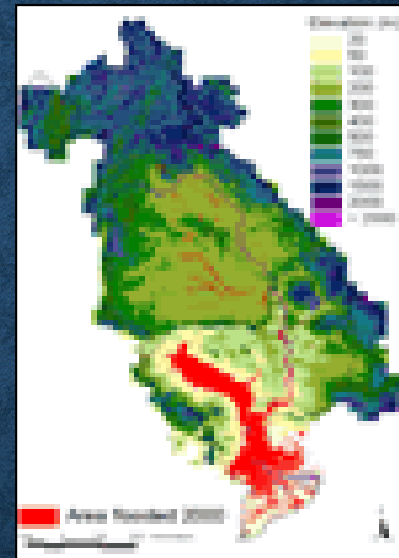
Our conceptual model for ecohealth education



DEMONSTRATION LESSON IN TTC (LECTURE: WATER CYCLE IN OUR WORLD)



Lecture by Prof Watanabe from Shinshu Univ



Logical teaching plan ! Good contents for understanding importance of water, It is better to integrate to present lesson as visual materials. Needs to modify for Lao version!

CHALLENGE TO DEVELOP NEW TEXTBOOKS AND INNOVATE TEACHING METHODS IN LAO PDR FOR INTRODUCING ECOHEALTH EDUCATION



TOPIC EXAMPLES OF HUMAN HEALTH AND ECOSYSTEM IN ECOHEALTH EDUCATION

- Ecosystem and human health
- Water, human livelihood, and human health
- Water, soil pollution, and human health
- Ecosystem and water borne diseases
(*Ophistorchis viserrini*, Diarrhea, etc.)
- Forest and human health
- Energy consumption and human health
- Waste management and human health
- Oral health and food habit transition

HEALTH FOR ALL OR/IN TERMS OF ECOHEALTH FOR ALL

- WHO declared perfect “Health for ALL.”
- Perfect health is important but feasible for all?
- Ecohealth stresses that we will go forward to attainable health conditions in limitations of local social and ecosystem.
- Through ecohealth education, we can contribute to healthy development of children and youth.

Building up a system of collaboration for introducing ecohealth education in school

MOE-MOH

Cooperation

NUOL-FOE
ATTACHMENT SCHOOLS

Teacher Training College:

Central-South
Savannakhet

North
Luang
Prabag

South
Champasak

Central
Vientiane

Capital
Vientiane.M

Attachment
Schools
(Pre/Dis)

Attachment
Schools
(Pre/Dis)

Attachment
Schools
(Pre/Dis)

Attachment
Schools
(Pre/Dis)

Attachment
Schools
(Pre/Dis)

KEY POINTS FOR INTRODUCTION OF ECOHEALTH EDUCATION INTO SCHOOL

Vision & Concept = a concept of Ecohealth

Localization = knowledge about health condition and ecosystem based on local areas.

Local ownership = TTC, school, and community

Team training = TTC, school, and academic sectors

Cross-sector collaboration = multidisciplinary sectors, administrative line of MoE

Leaders = Influential person, opinion leaders

Supportive norms = valuing ecohealth important and so on.

**ECOHEALTH CAN CONTRIBUTE TO SUSTAIN
OUR HEALTH AND GLOBAL WORLD IN
BETTER AND SUSTAINABLE CONDITION**



ACKNOWLEDGEMENTS

I would like to express my sincere gratitude to Professor Kazuhiko Moji, Professor Jun Kobayashi, Dr. Sachi Tomokawa, Mr. Bounseng Kanhavong, Mr. Phoumy Douangchanh and all other Laotian staffs.