



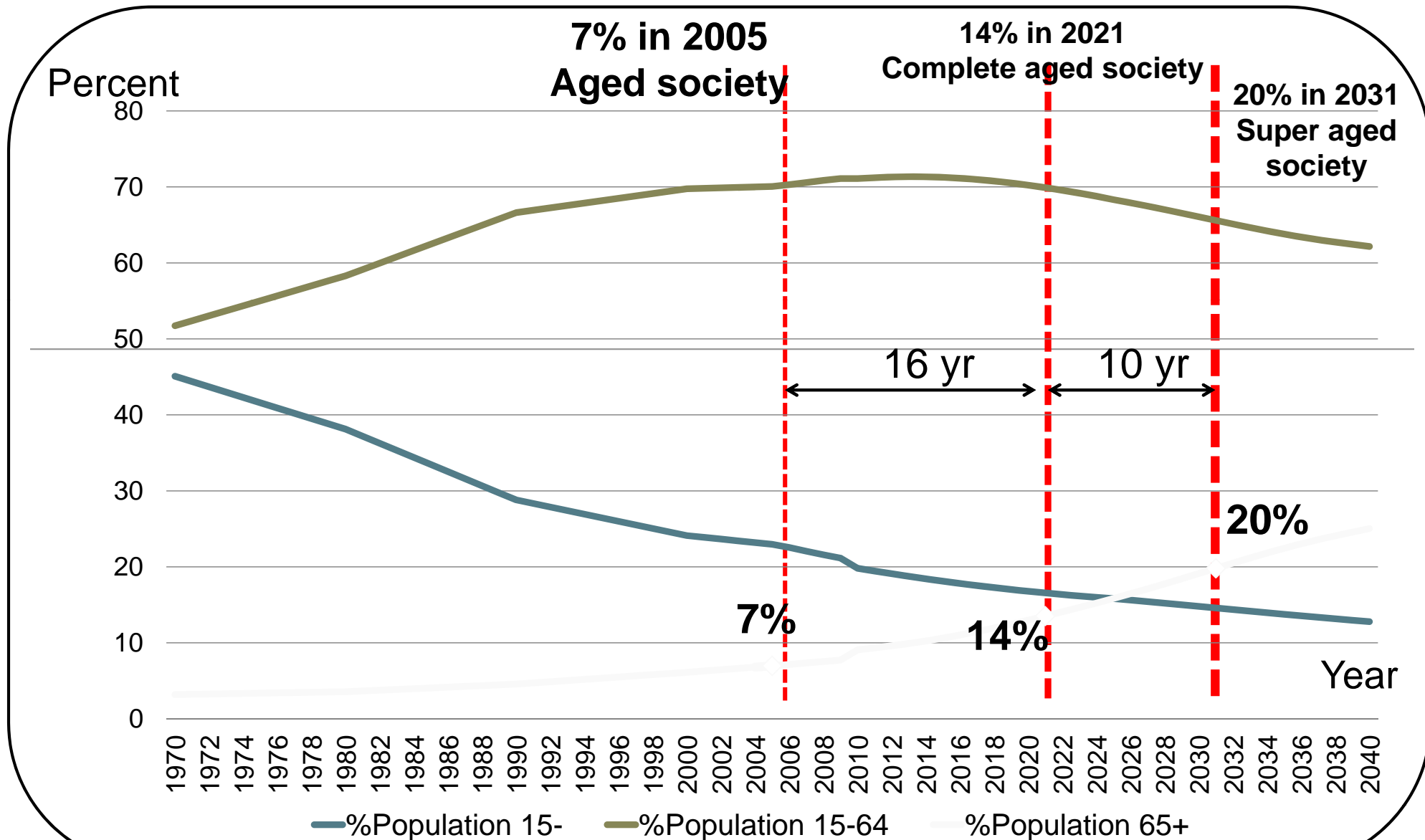
Elderly and Their Families in Thailand: Past, Present and Future

Pramote Prasartkul, Ph.D.
IPSR, Mahidol University

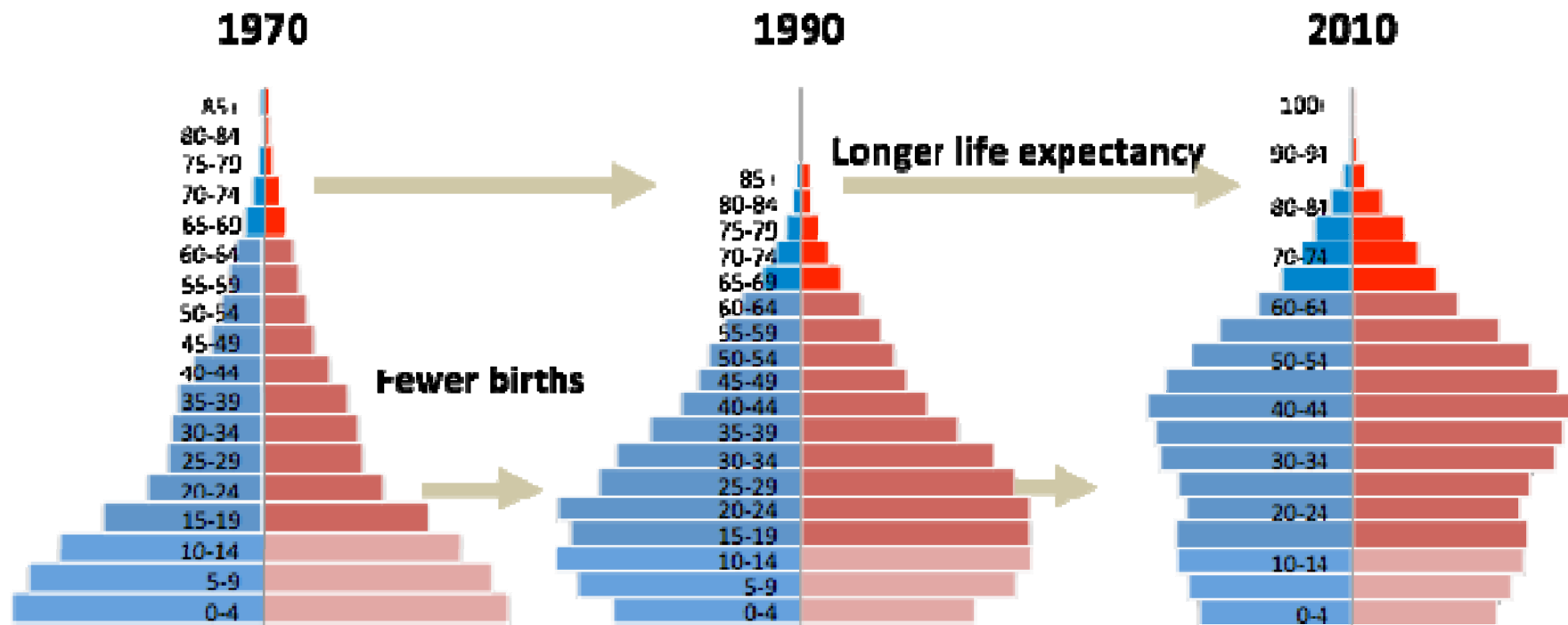
JITHHH 2013
Centara Grand Bangkok Convention Centre
Bangkok, Thailand

13 December 2013

Population aging in Thailand is proceeding with high speed.

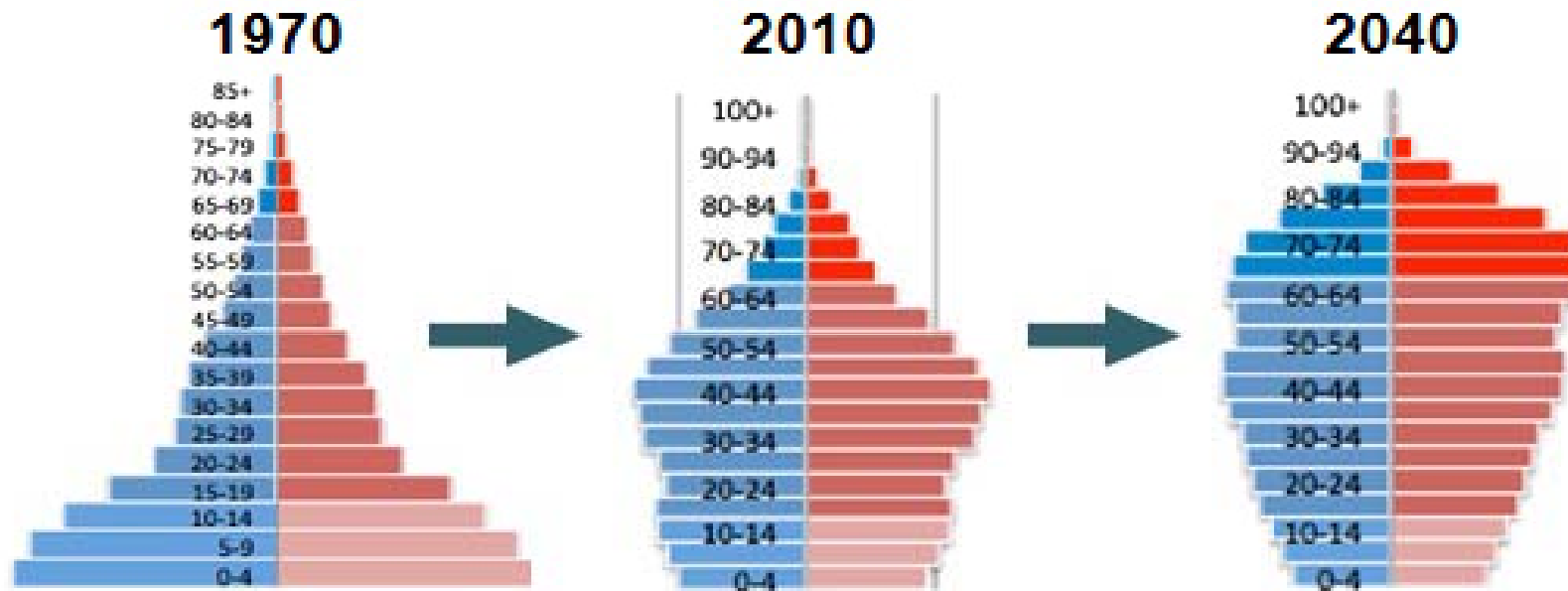


Fertility decline and longer life expectancy have been the key determinants of population aging.

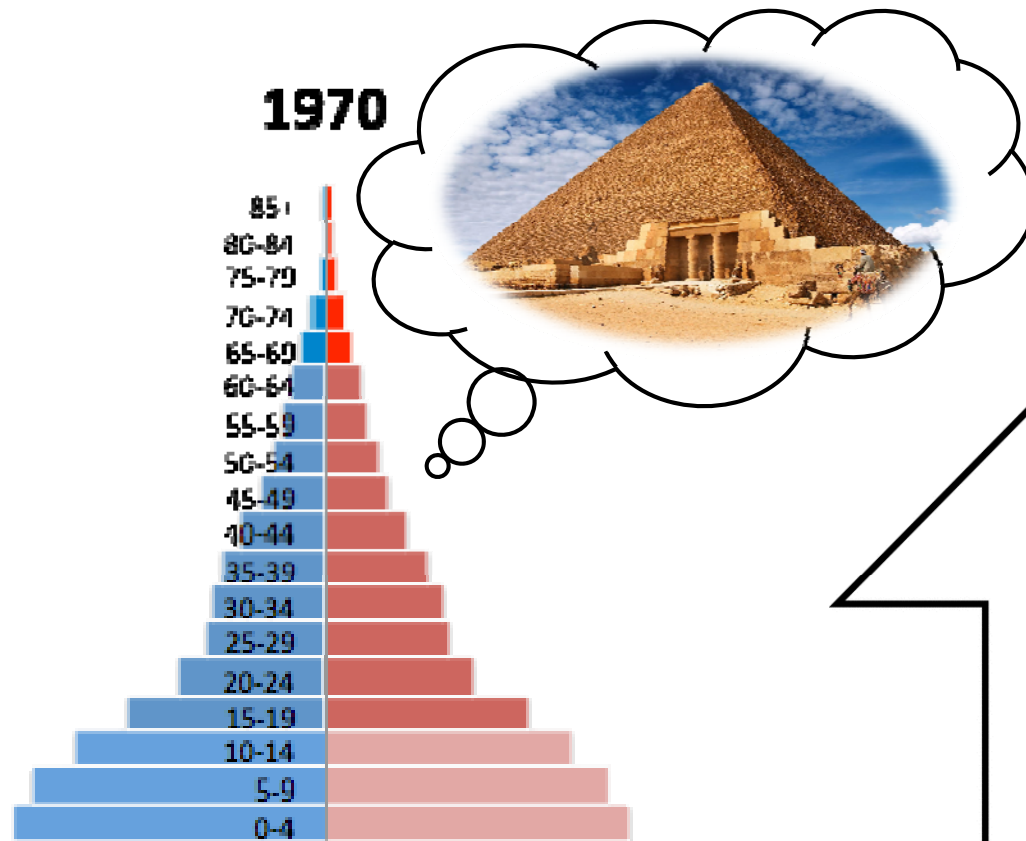
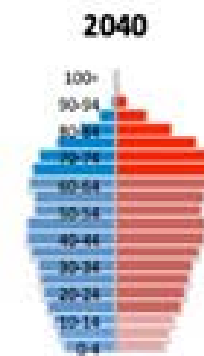
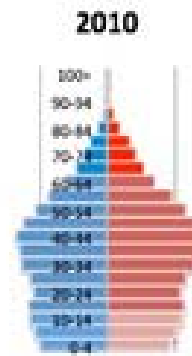
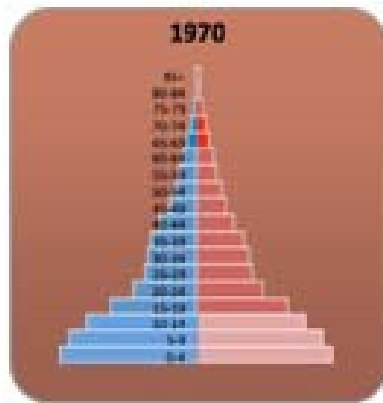


Fewer births narrow the base of population pyramid, while the longer life expectancy expands the top.

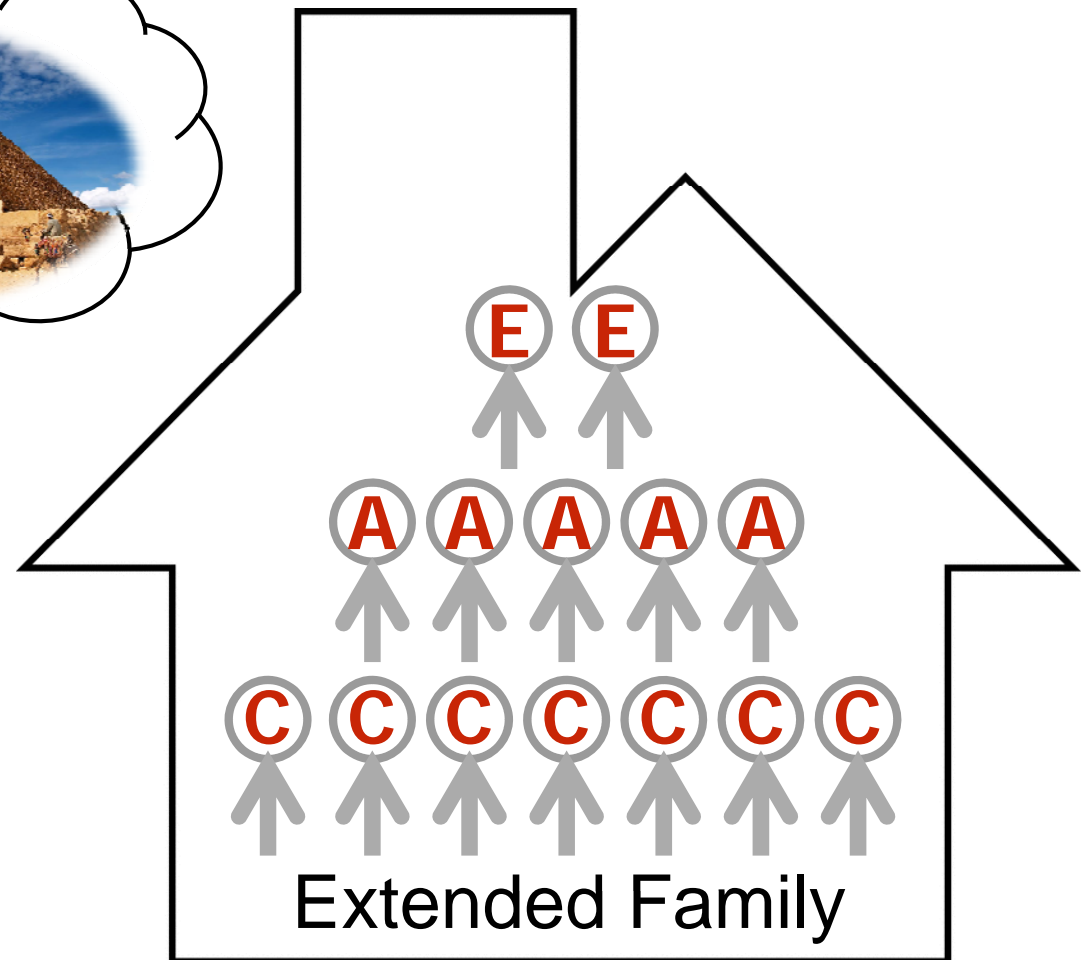
Population pyramids of Thailand: Past, Present and Future

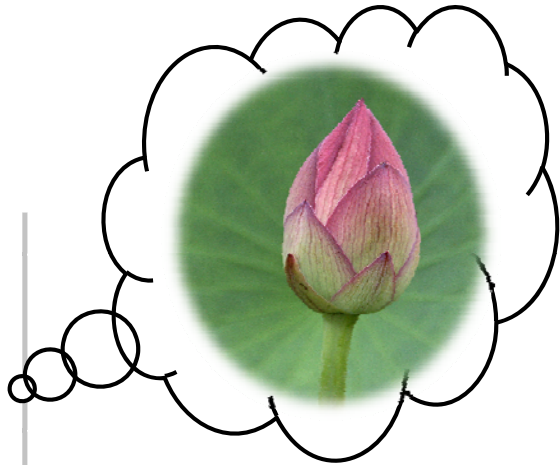
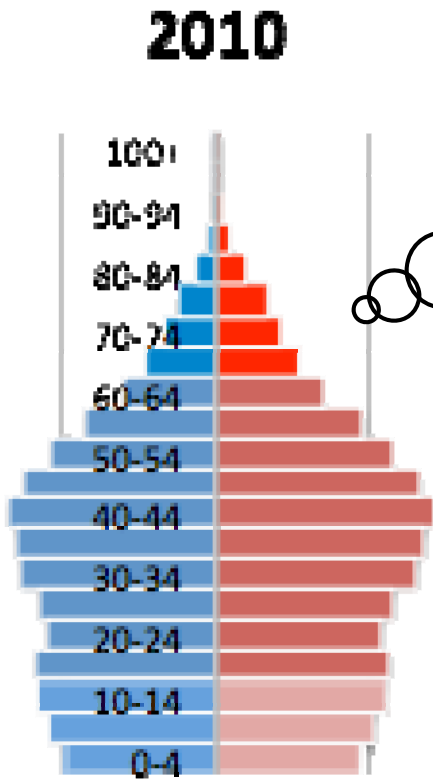
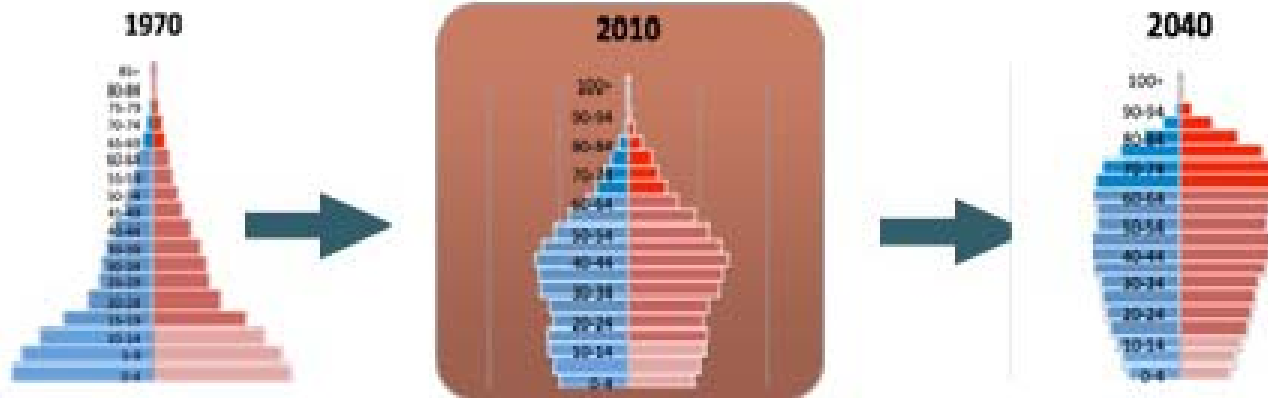


	1970	2010	2040
% Population 60+	4.9	12.9	32.1
% Population 15-	45	19.5	12.8
Median Age	18	35	39
Number of Population 60+ (million)	1.7	8	20

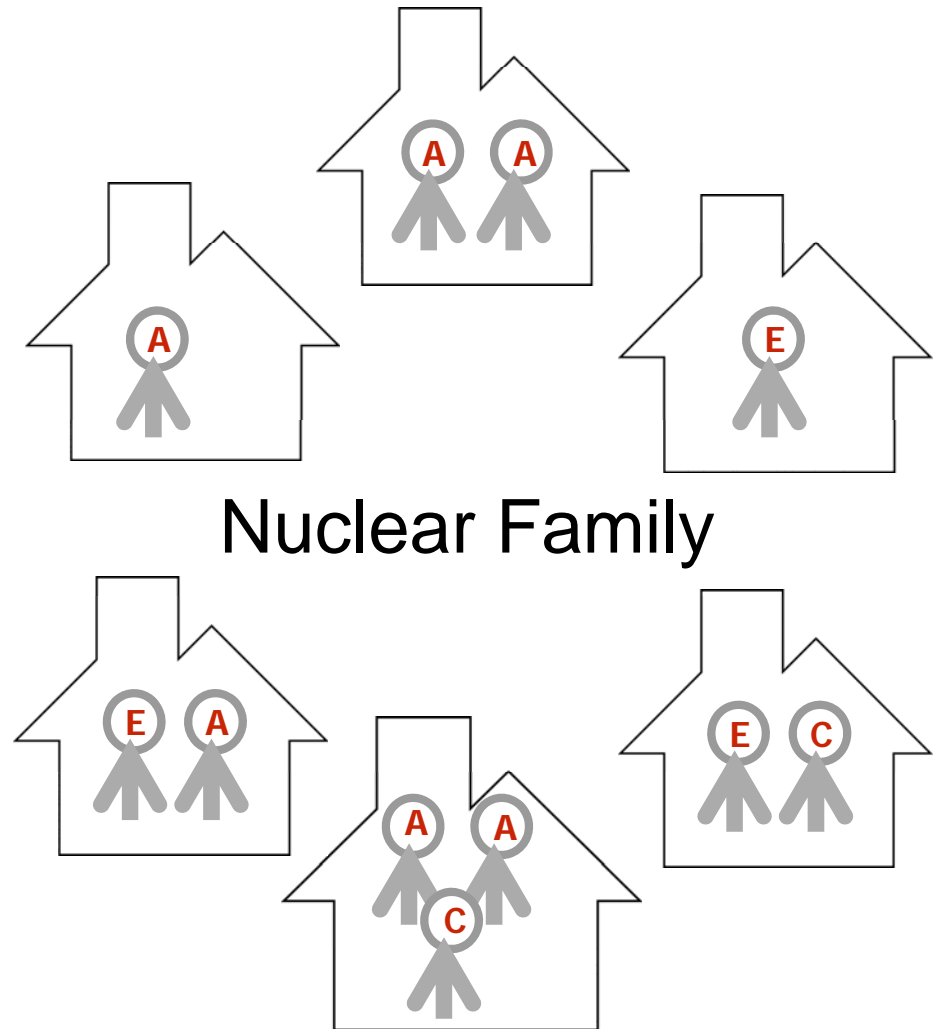


Population Pyramid (1970)

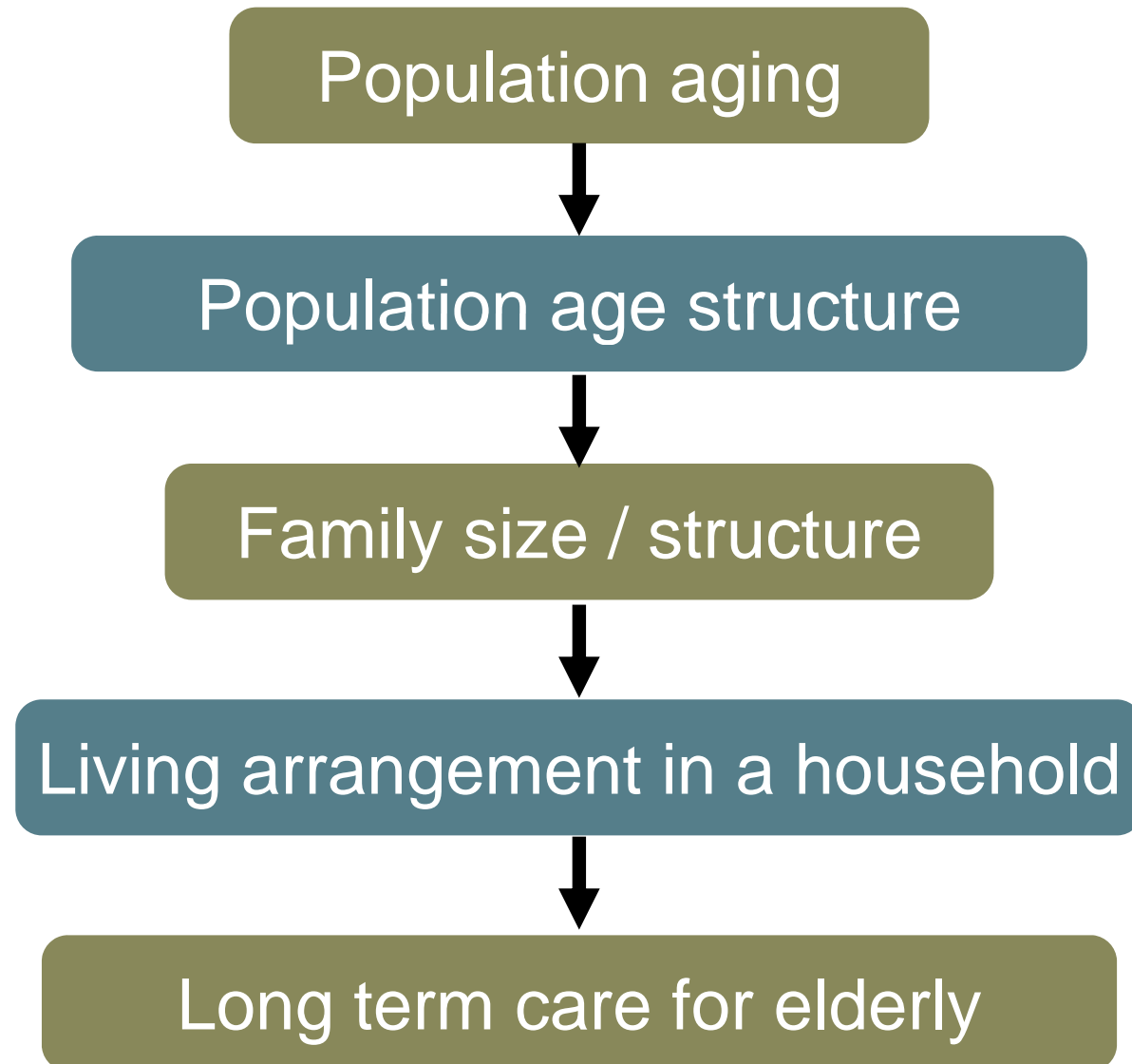




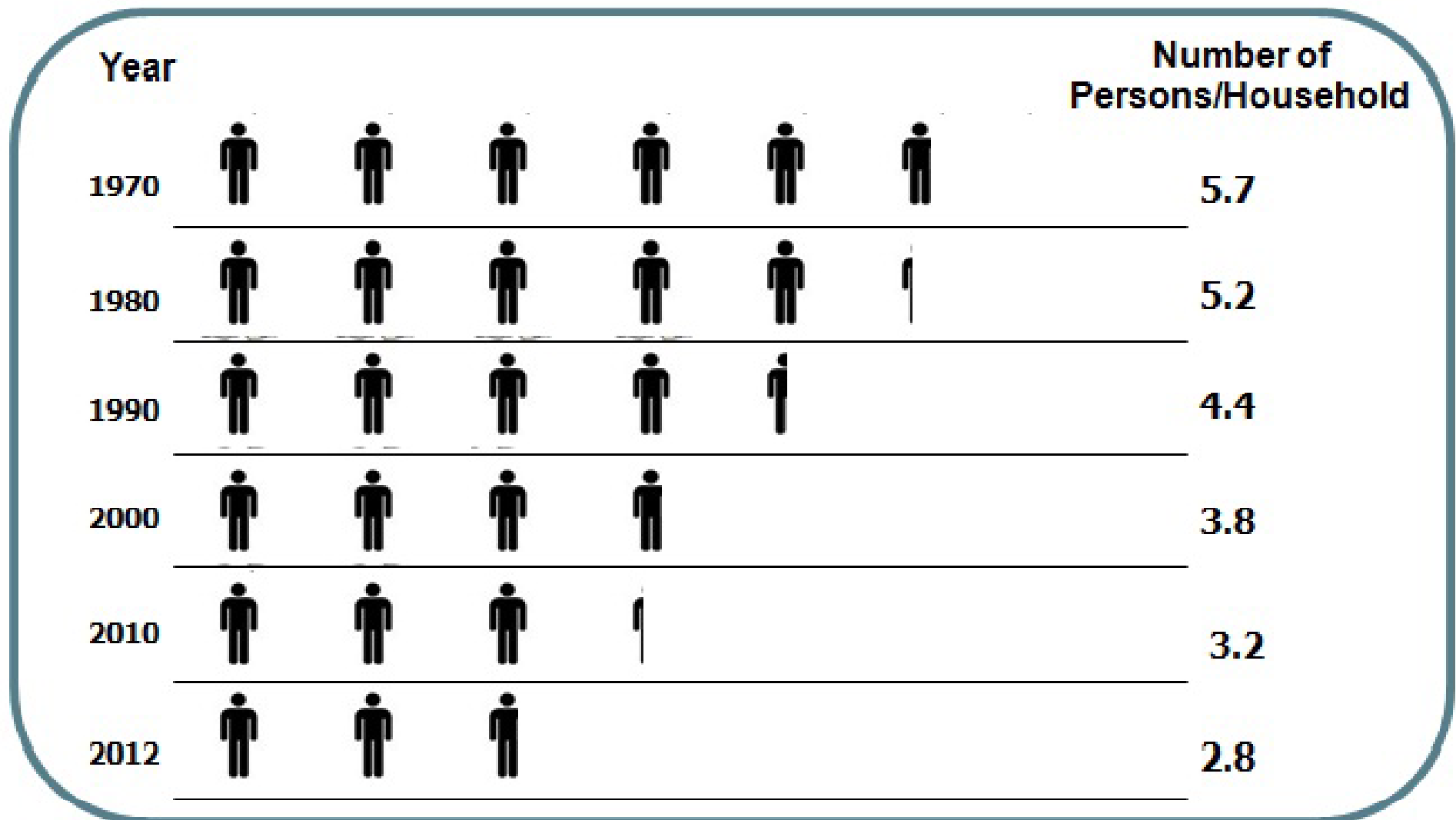
Population Pyramid (2010)



Path relationship of population aging to the LTC for elderly.



The family size has been decreasing dramatically from 5 in 1970 to 2.8 in 2012

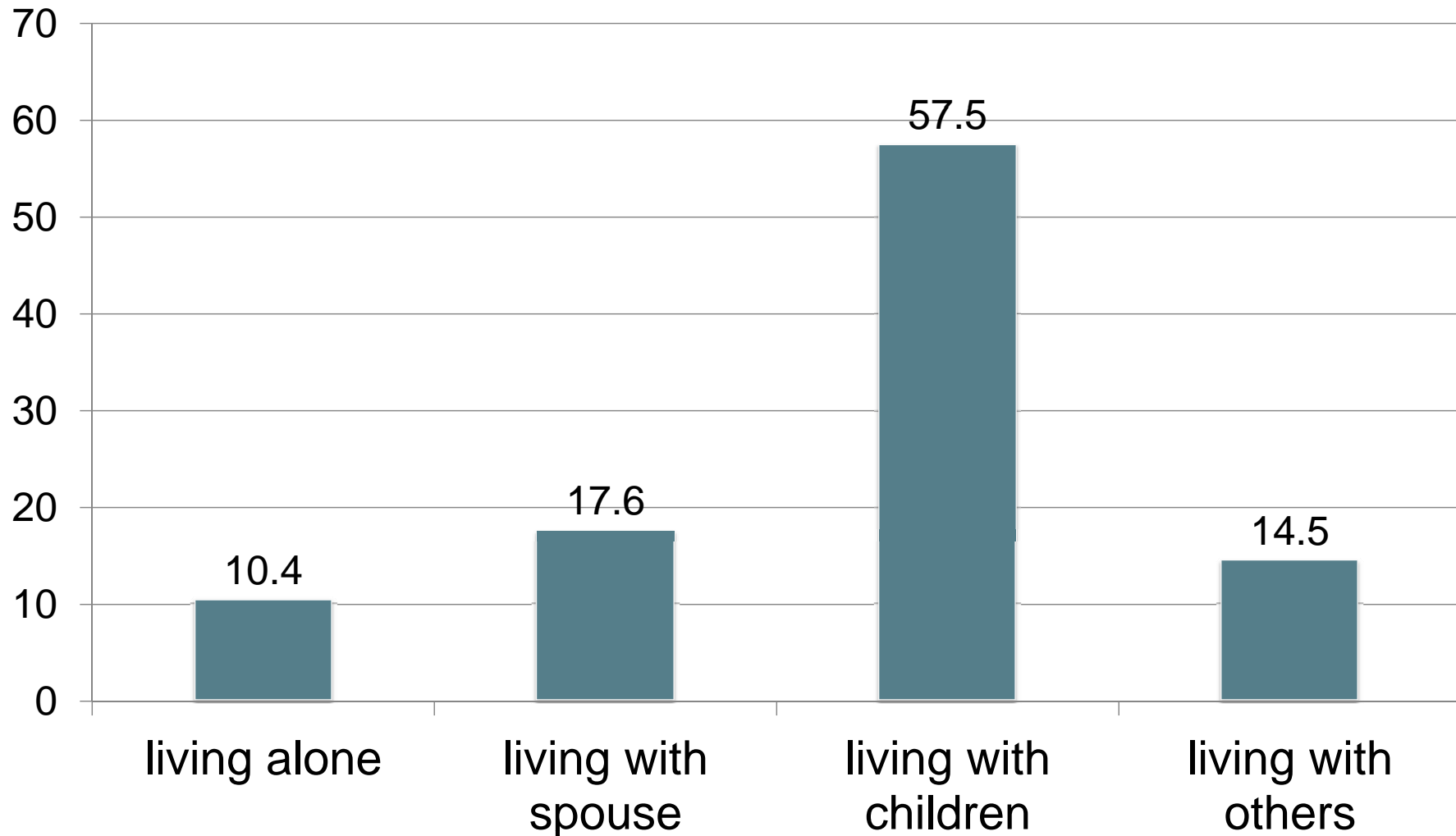


Source: NSO Population Census and Civil Registration, Ministry of Interior

While the size of the Thai family has been getting smaller, patterns of living arrangements for the elderly have been diversified.

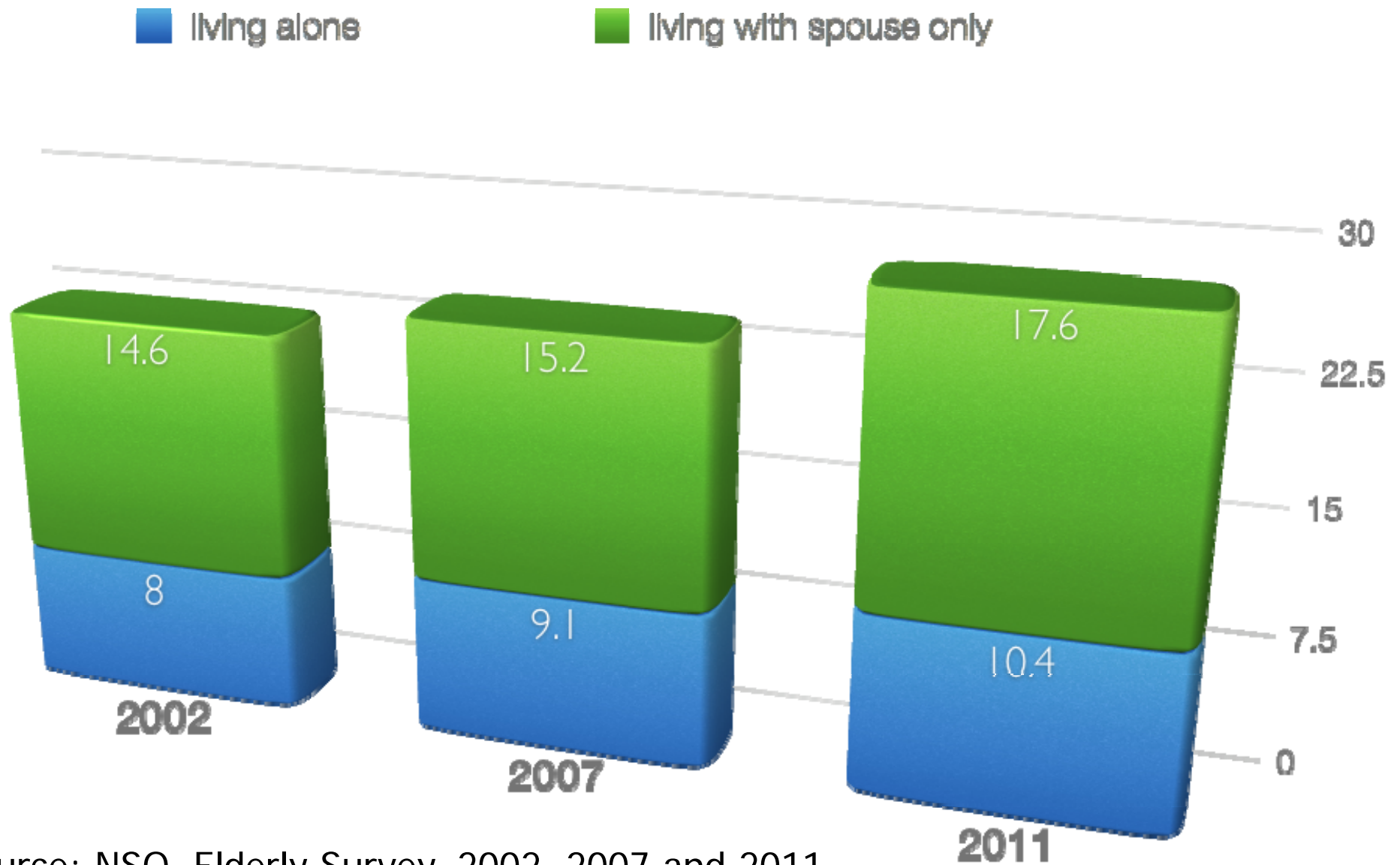
- ➔ Elderly living alone
- ➔ Elderly living with spouse only
- ➔ Skipped generation (elderly + grandchildren)
- ➔ Elderly living with adult children only
- ➔ etc.

In 2011, the elderly survey conducted by the NSO reveals that 72% of the population age 65+ live with their children and others.



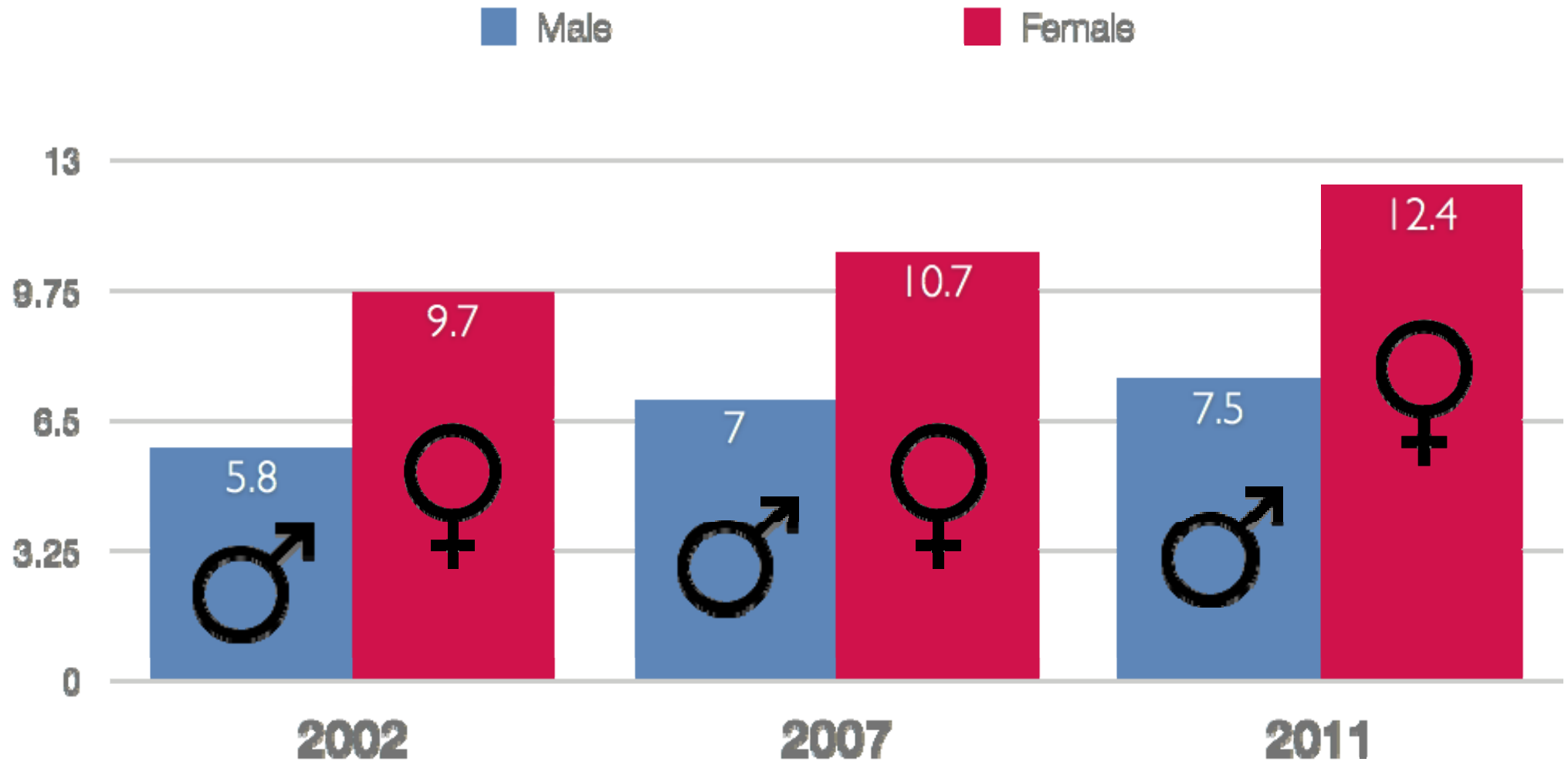
Source: NSO, Elderly Survey 2011

The trend of elderly living alone has been continuously increasing.

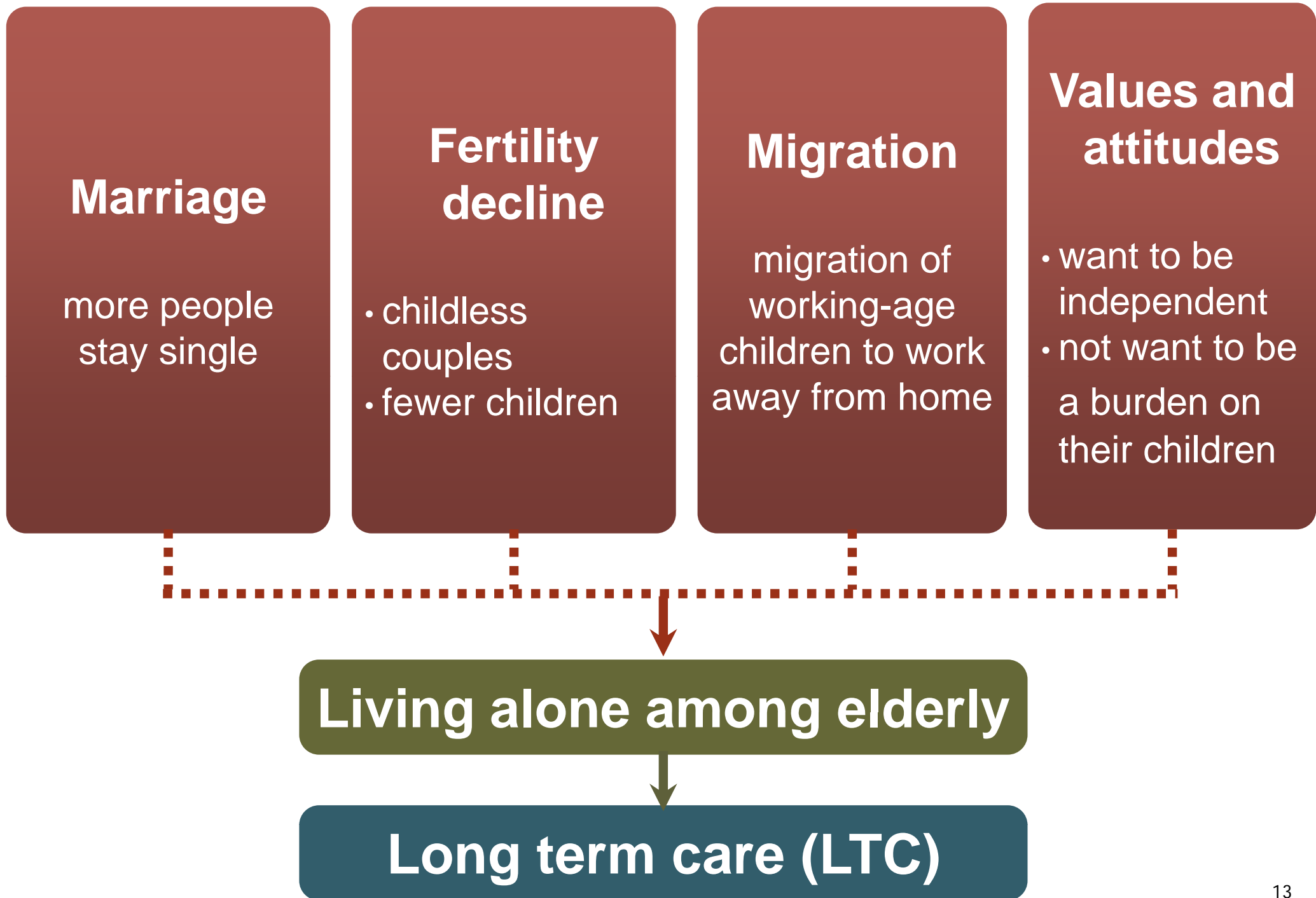


Source: NSO, Elderly Survey, 2002, 2007 and 2011

More female elderly living alone !



Source: NSO, Elderly Survey, 2002, 2007 and 2011



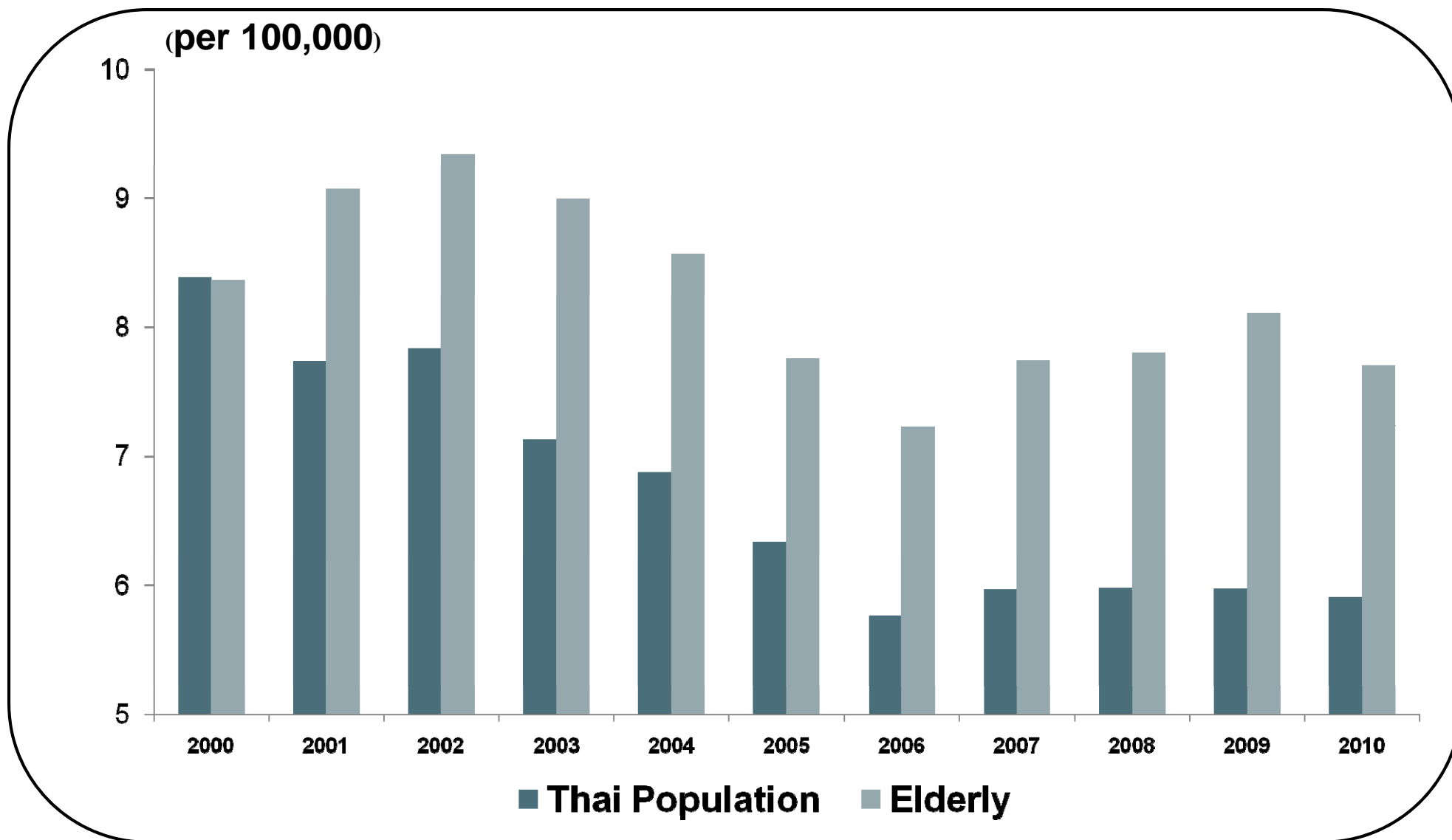
Estimated number of disabled elderly

Sex	2010	2040
Male	113.8	268.4
Female	180.5	471.2
Both sexes	294.2	739.6

*Sources: Disability prevalence proportion from NHES III (2003-2004),
Population data from NESDB Population Projection of Thailand, 2010-2040*

Disability = cannot perform 5 major daily-life activities by themselves: eating, bathing, dressing, toileting, and moving in the house.

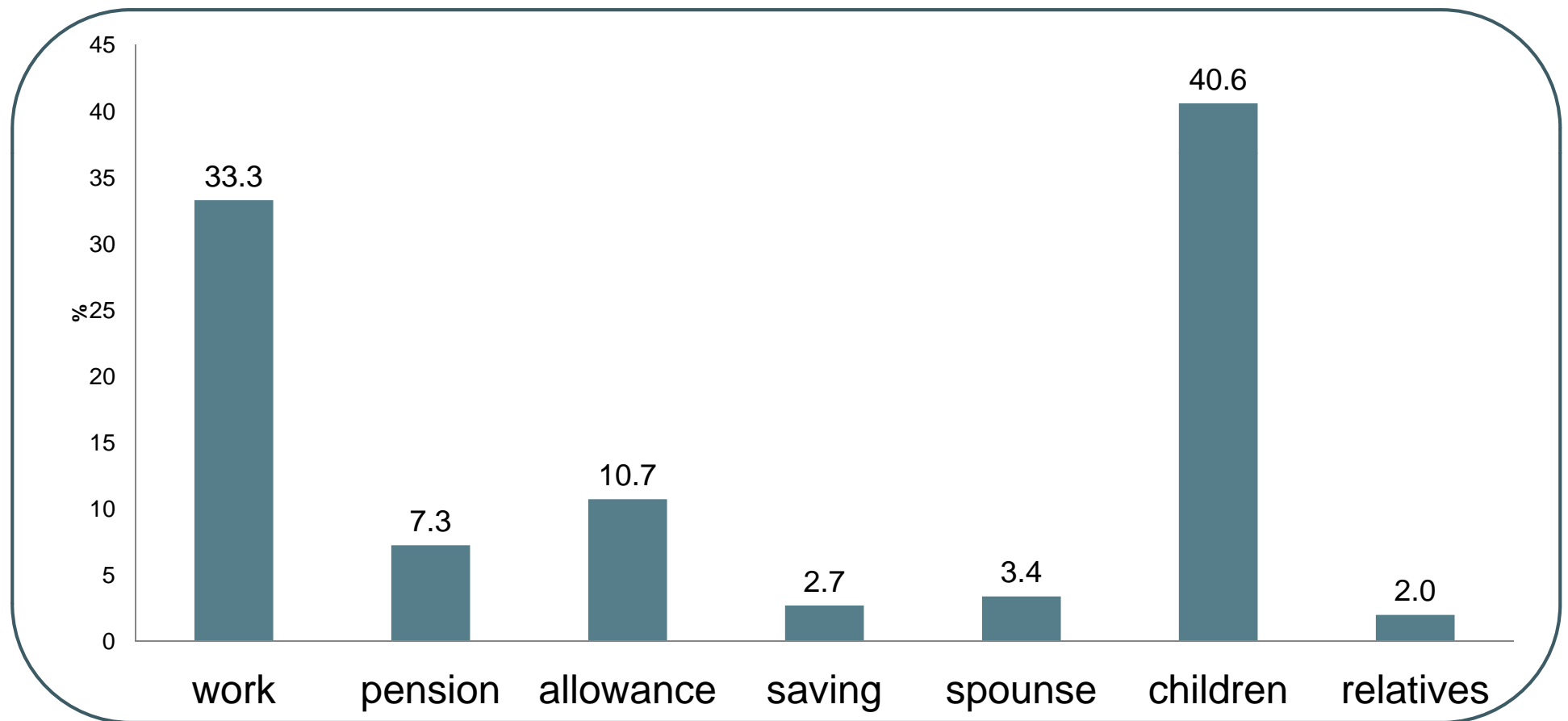
Suicide rate among Thai population and elderly (60+), 2000-2010



Sources: Department of Mental Health and Civil Registration of MOI

Sources of elderly's income

Remittance from children is the main source of income among Thai elderly.



Sources: National Statistics Office. 2012. The survey of elderly in Thailand 2011.

Who cares for the elderly living alone?

