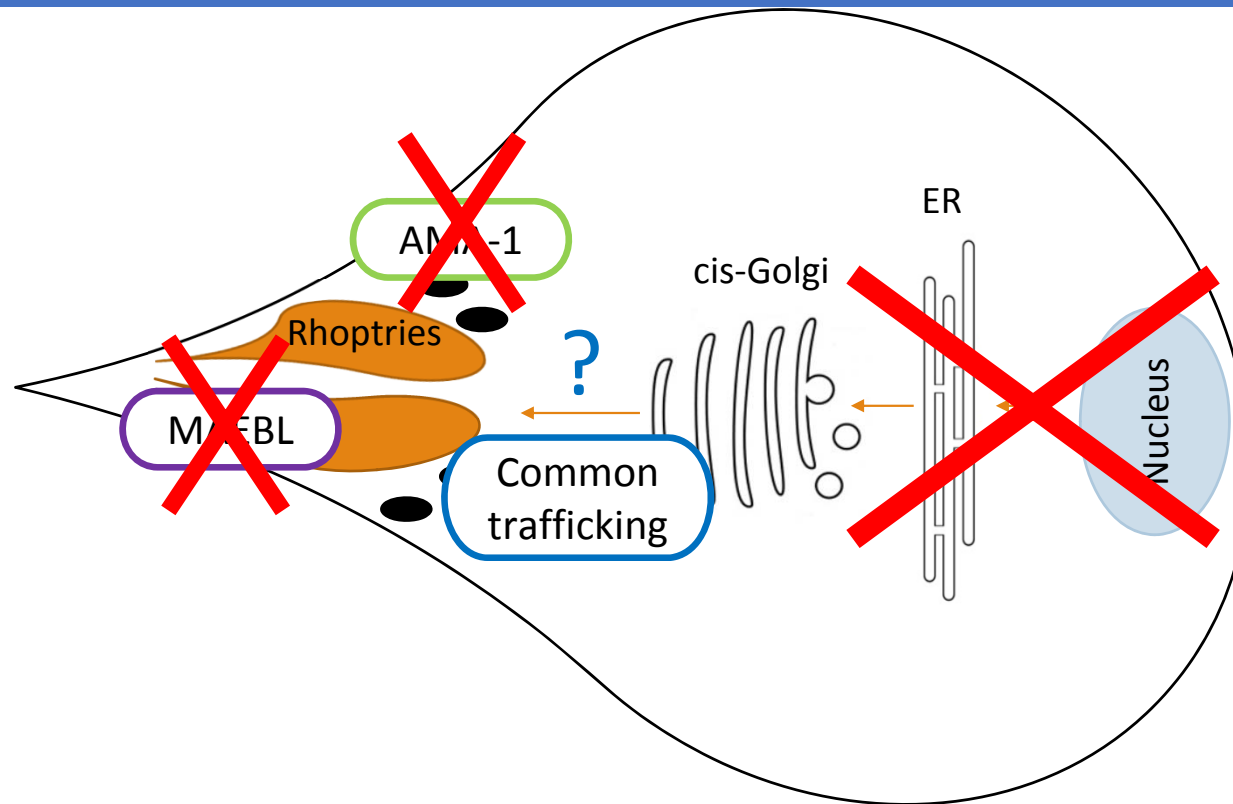




The trafficking of invasion proteins in the human malaria parasite, *Plasmodium falciparum*

Serena Shunmugam and Theresa Coetzer
Plasmodium molecular research unit
University of the Witwatersrand

Invasion proteins and trafficking



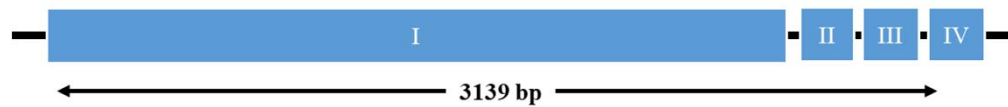
What protein should we consider?

Sortilin-VPS10 domain



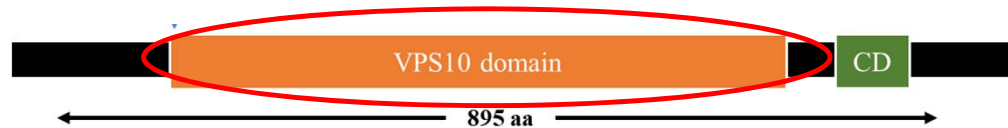
SORTLR in *T. gondii*

a) *Pf*sortilin gene structure (Gene ID: PF3D7_1451800)

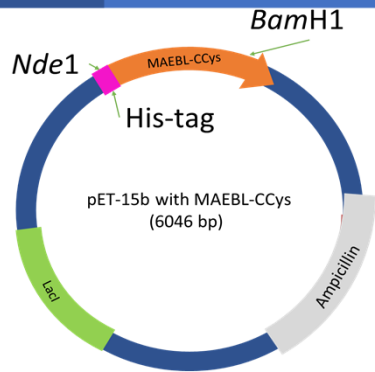


Sortilin in *P. falciparum*

b) *Pf*SORTILIN protein structure

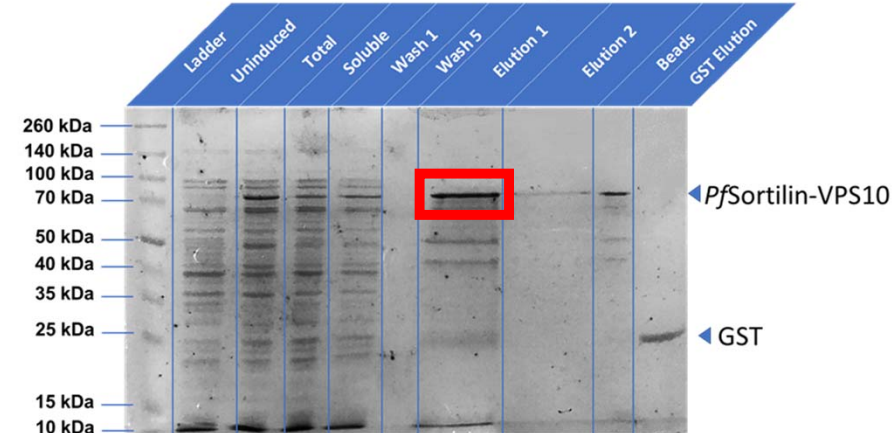
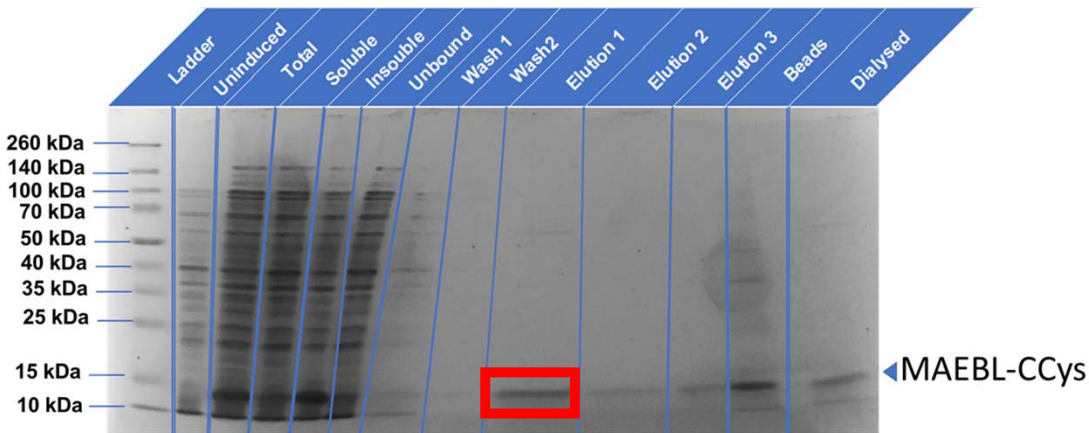
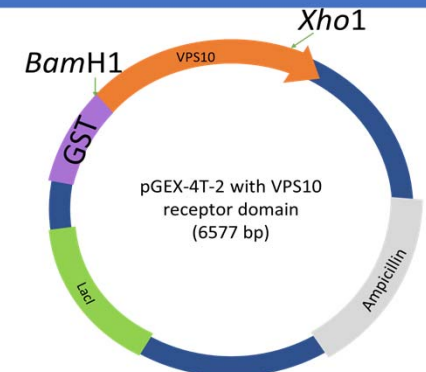


Production of MAEBL and Sortilin

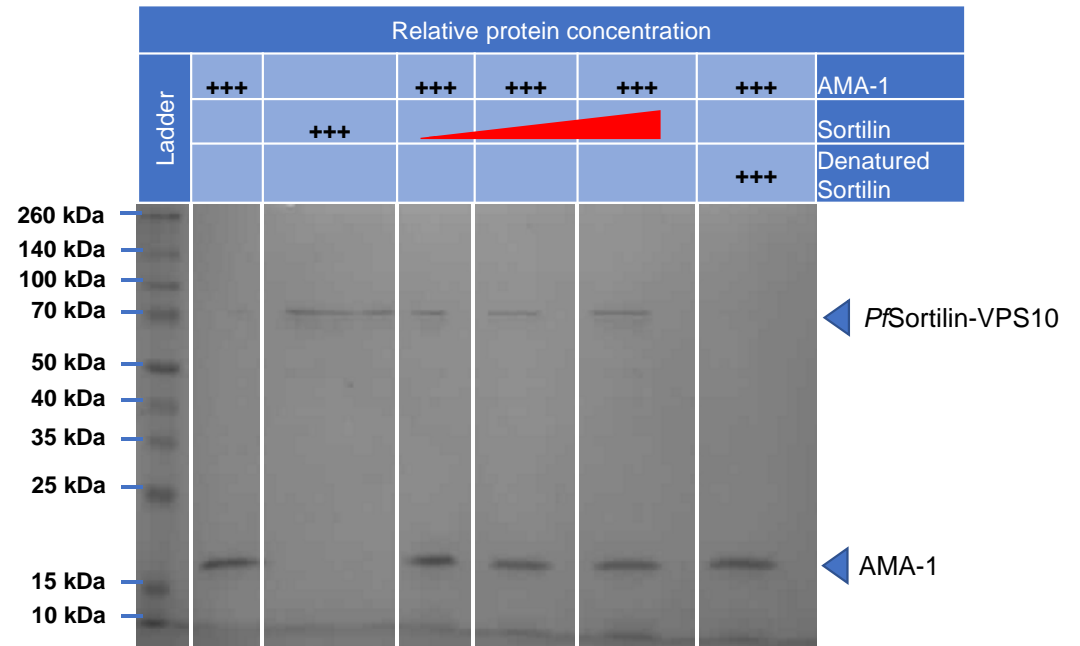
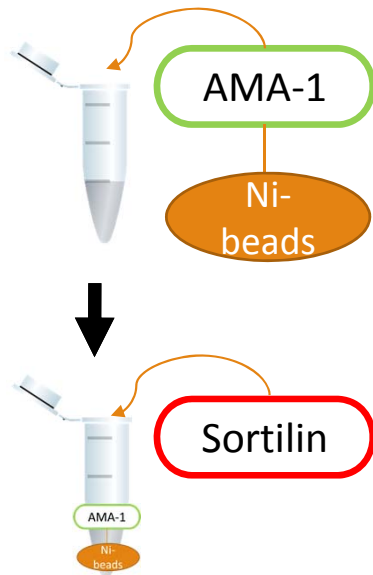


Optimization:

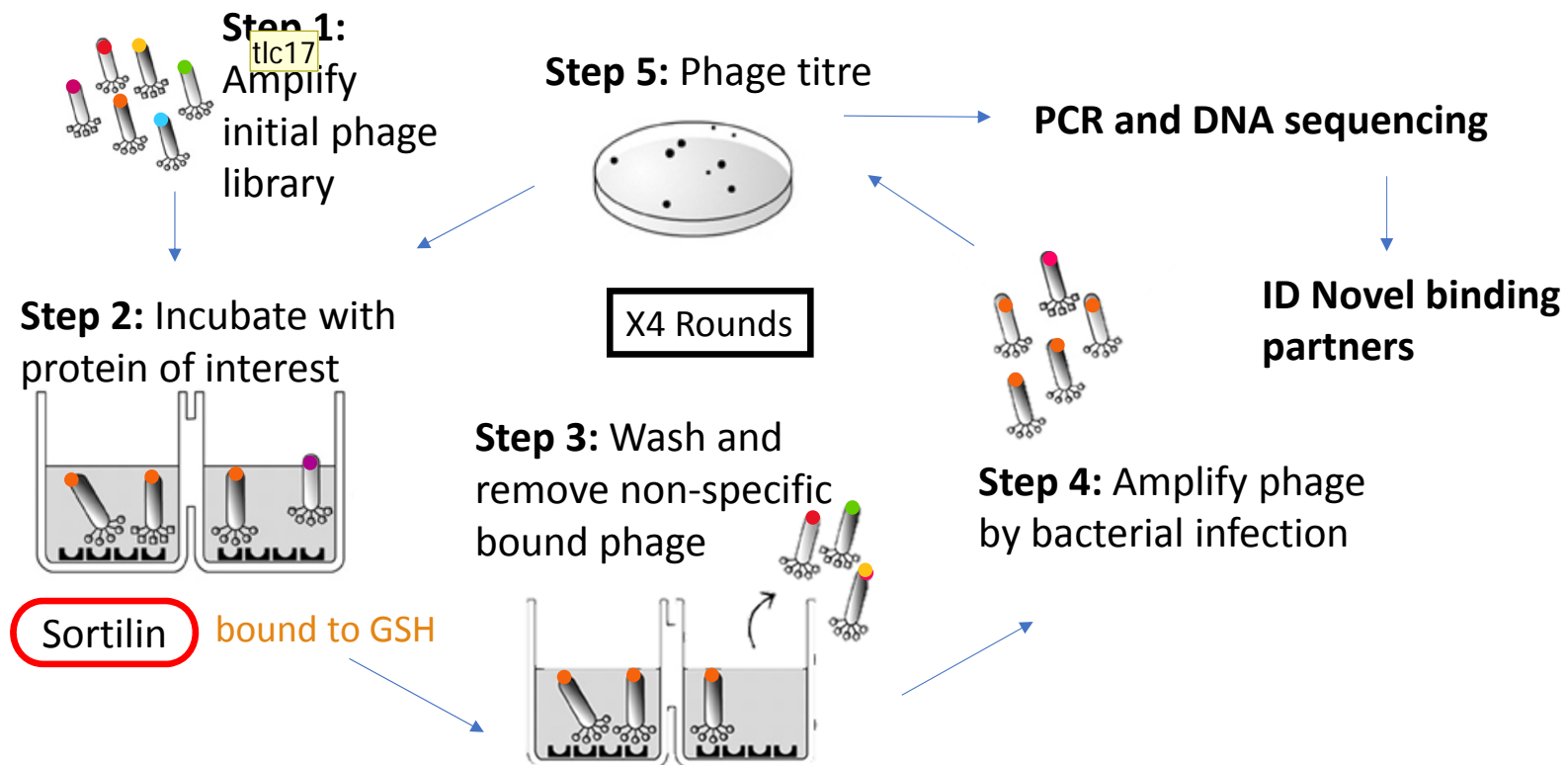
- Expression
- Purification



In vitro binding assay



Biopanning with a *P. falciparum* phage display library



Slide 6

tlc17 Try and make text 20
Wits-Admin, 28/10/2560

Concluding remarks...

