

# Update on antimalarial drug resistance in the GMS

JITMM

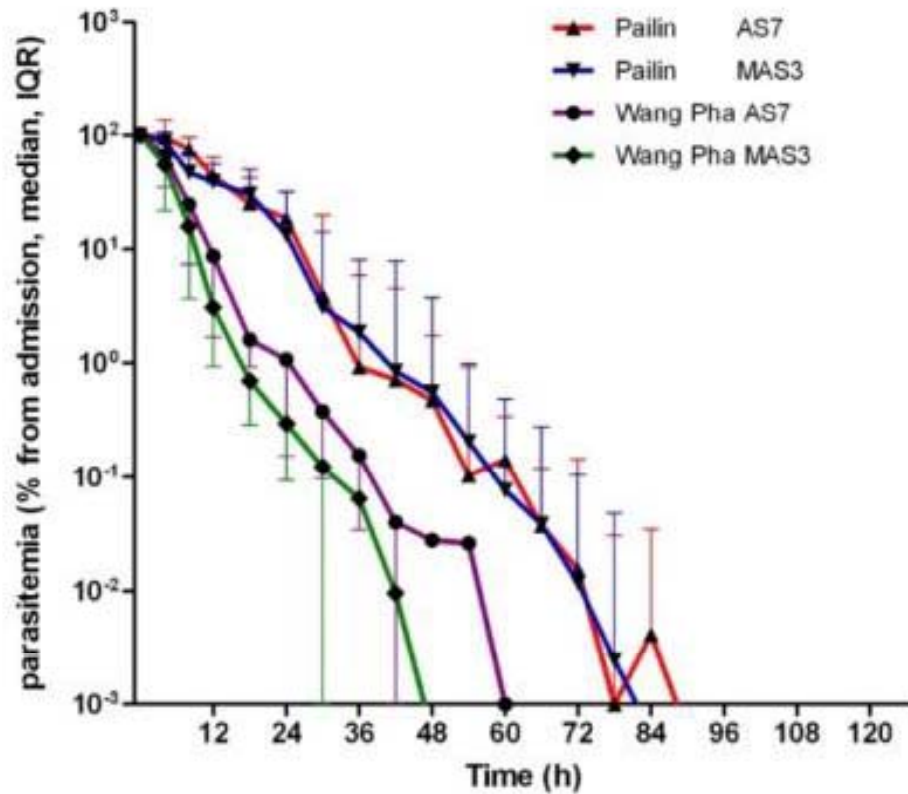
13 Dec 2018

Arjen Dondorp

Mahidol\_Oxford Tropical Medicine Research Unit

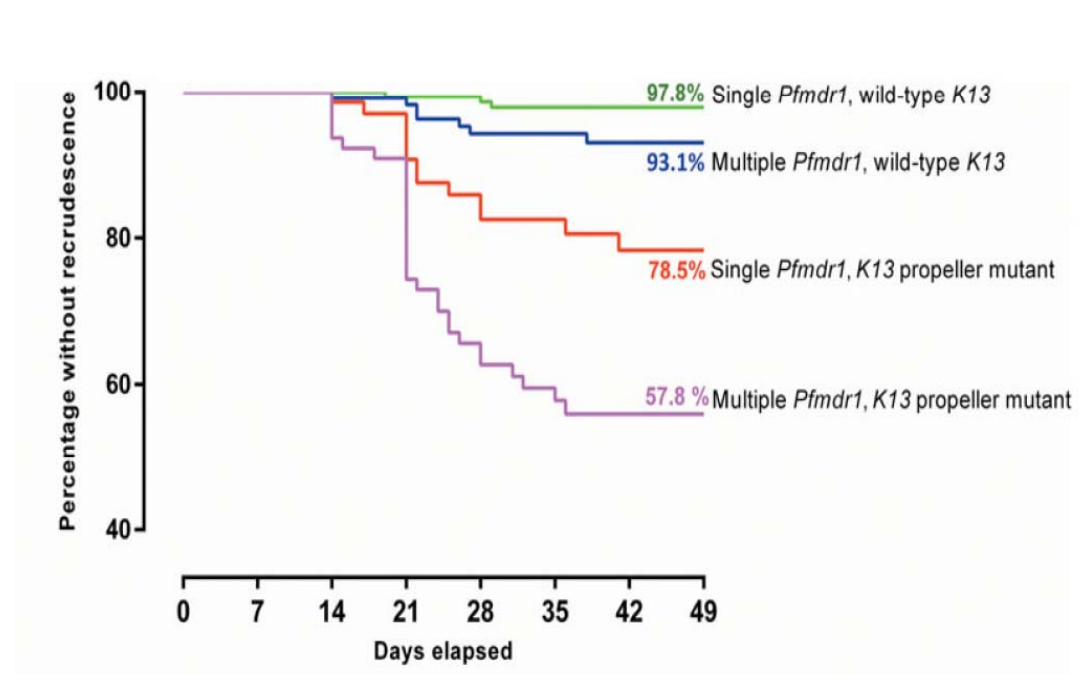
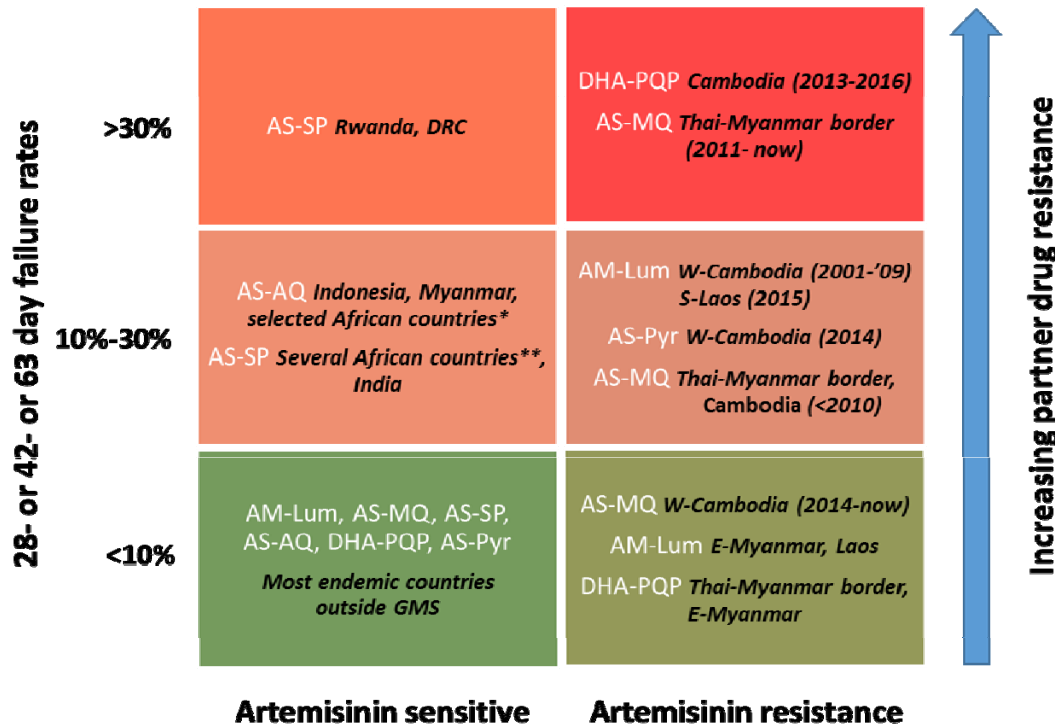
Bangkok, Thailand

# Artemisinin resistance – slow clearance



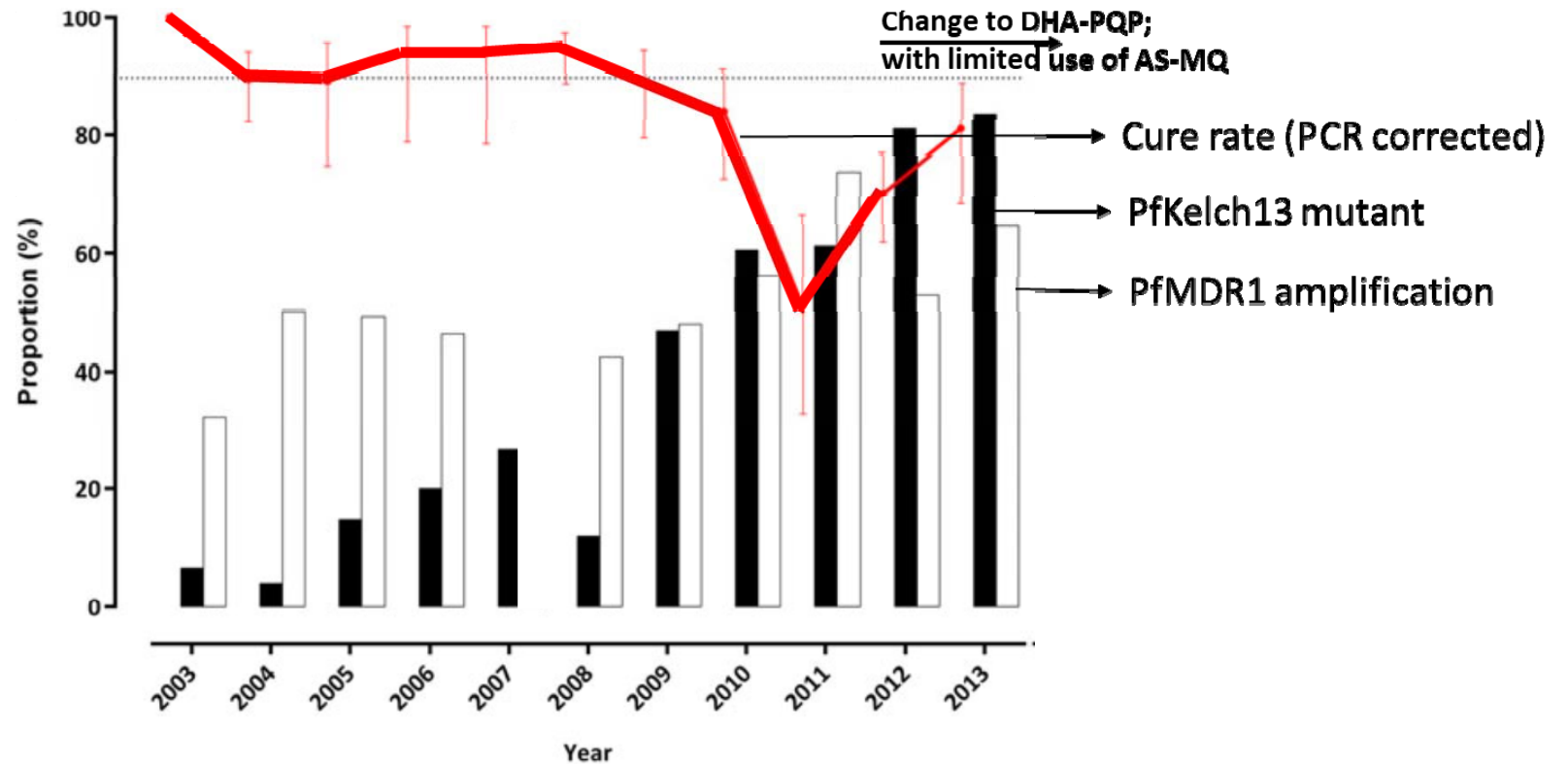
*Dondorp et al. N Engl J Med 2009*

# Artemisinin or partner drug resistance and ACT failure



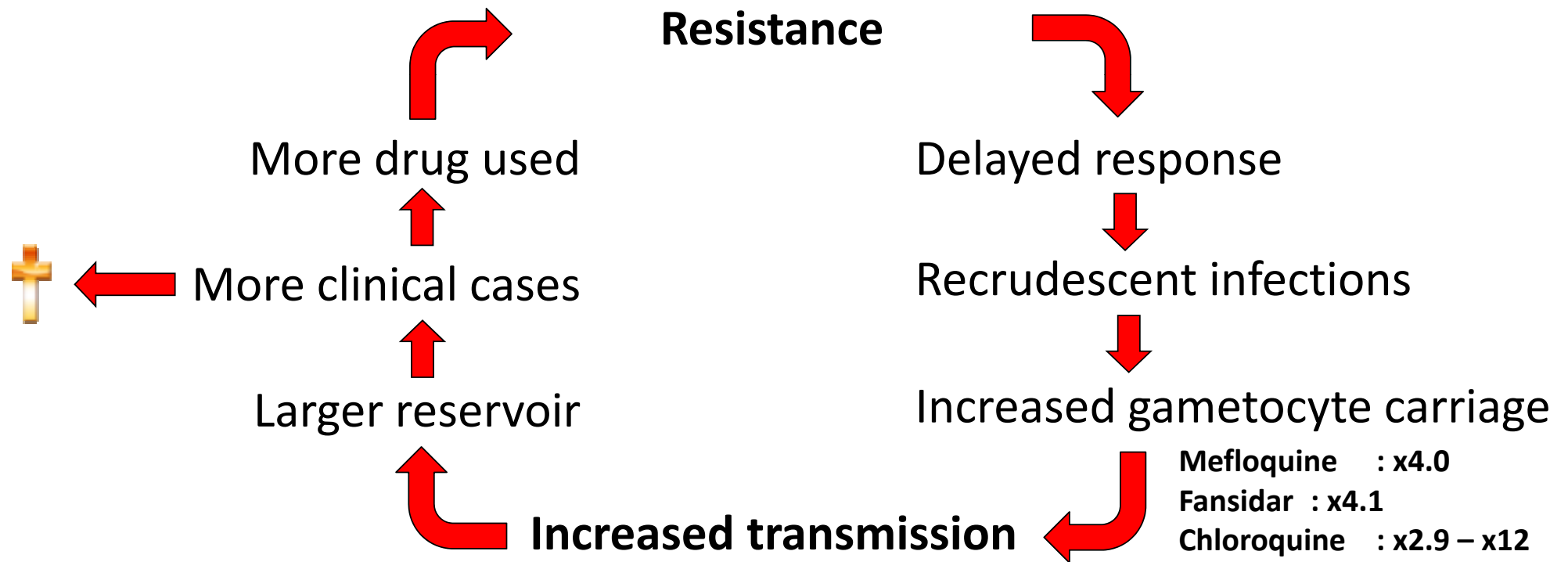
# Artemisinin resistance: facilitates partner drug resistance ->ACT failure

## Thai-Myanmar border



Adapted from: Aung Pyae Phyoe et al.  
Lancet 2012

# ACT failure $\Rightarrow$ $\uparrow$ transmission of drug resistance

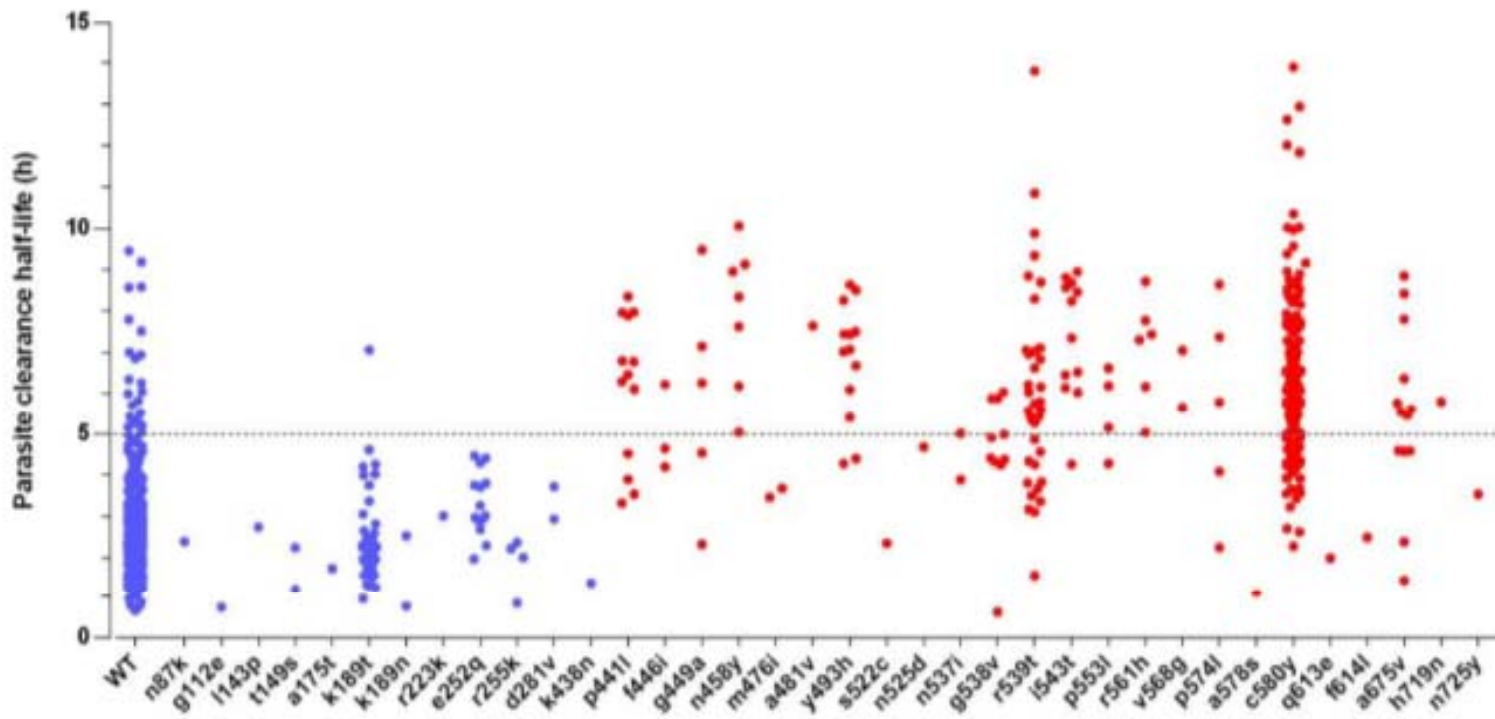


*Drakeley et al. 2004;  
Barnes & White 2005*

*Price et al. 1996;  
Bousema et al 2003*

# ≥ 75 mutations in the propeller region of Kelch 13

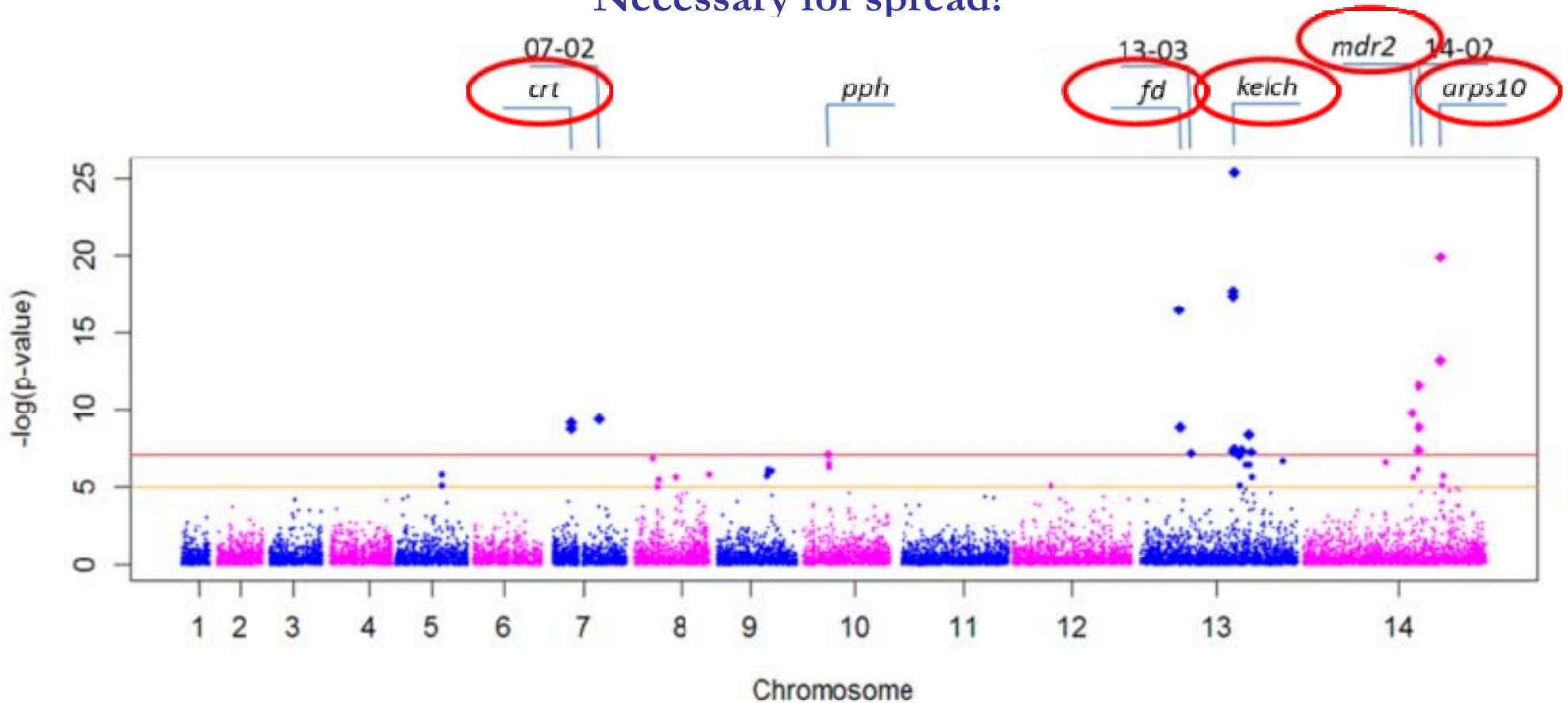
*Association with slow clearance not uniform*



K13 mutation	Classification
E252Q	Not associated
P441L	Associated
F446I	Associated
G449A	Associated
N458Y	Associated
Y493H	Confirmed
R539T	Confirmed
I543T	Confirmed
P553L	Associated
R561H	Confirmed
V568G	Associated
P574L	Associated
A578S	Not associated
C580Y	Confirmed
A675V	Associated

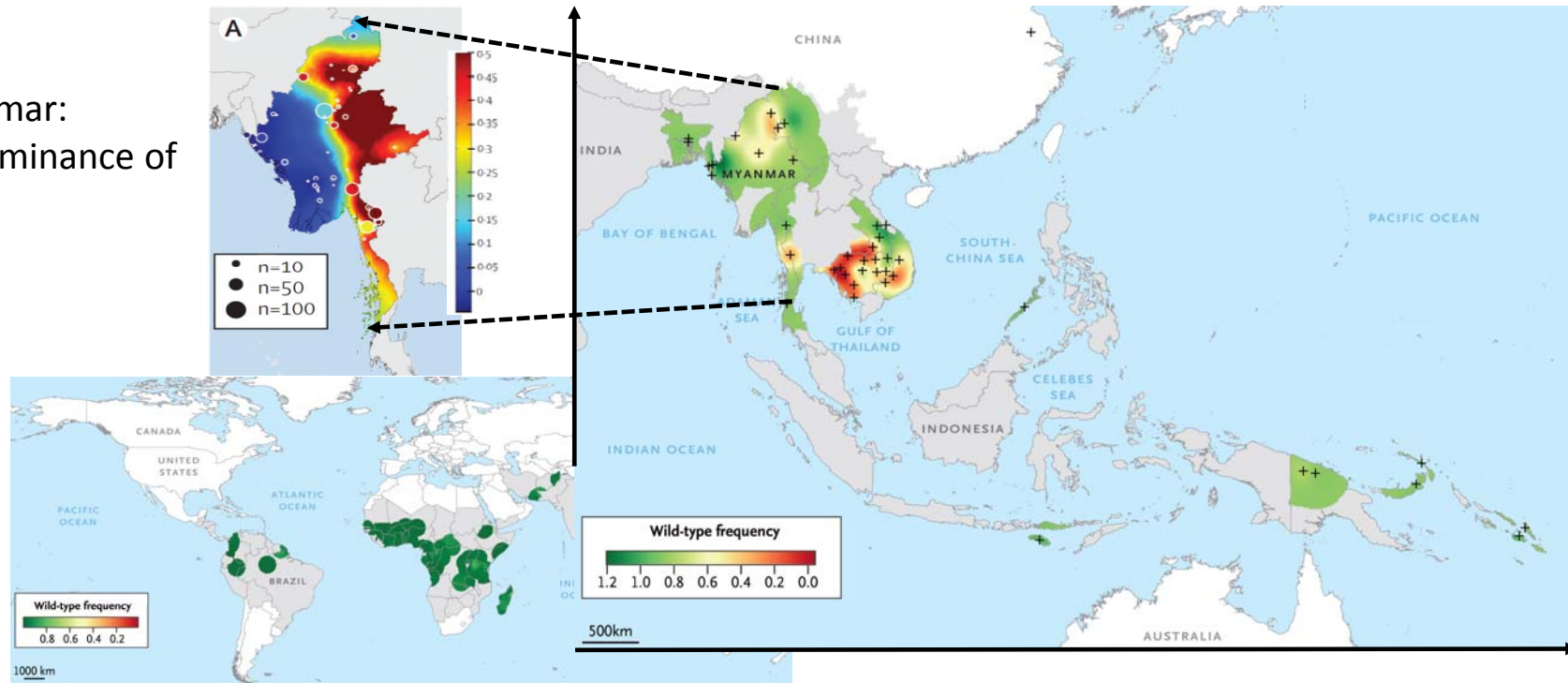
# Permissive or compensatory backbone mutations

Necessary for spread?



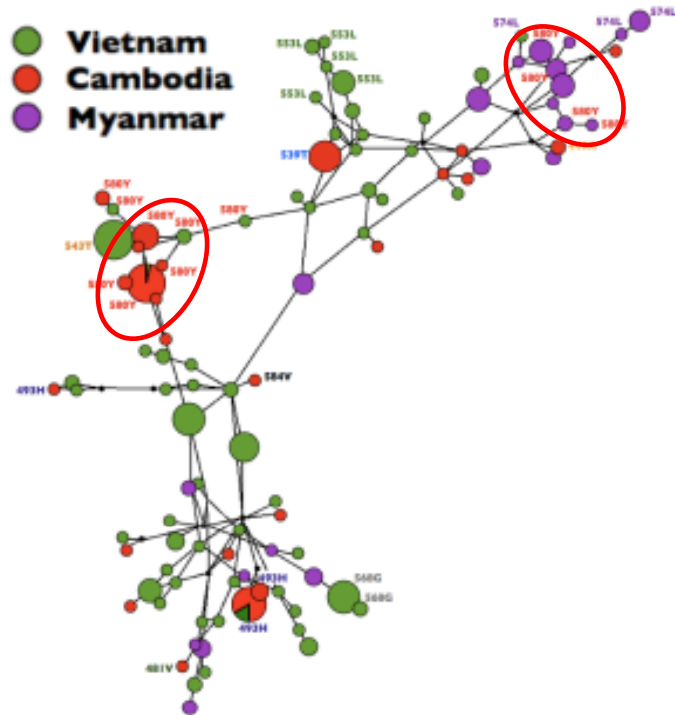
## Current GMS *PfKelch13* map

Myanmar:  
predominance of  
F446I

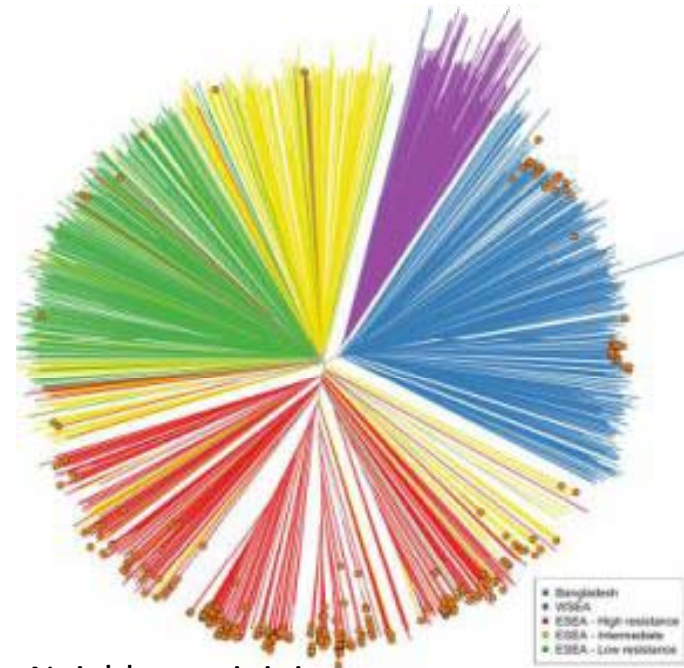




# Multiple occasions of PfKelch $\Delta$ emergence



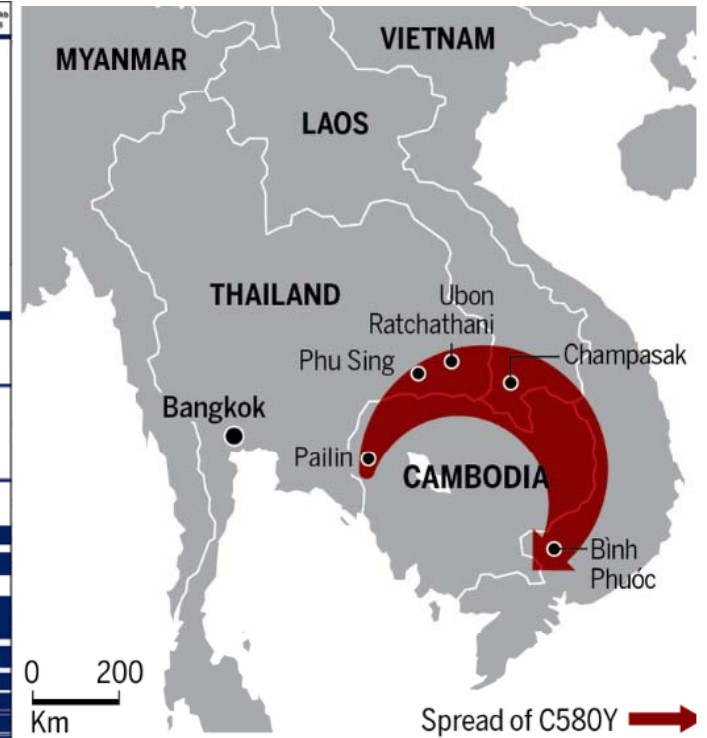
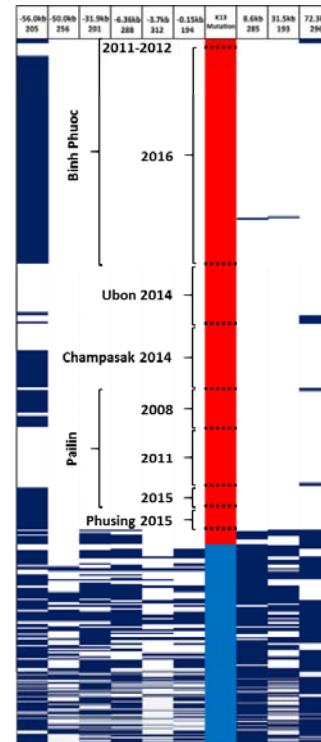
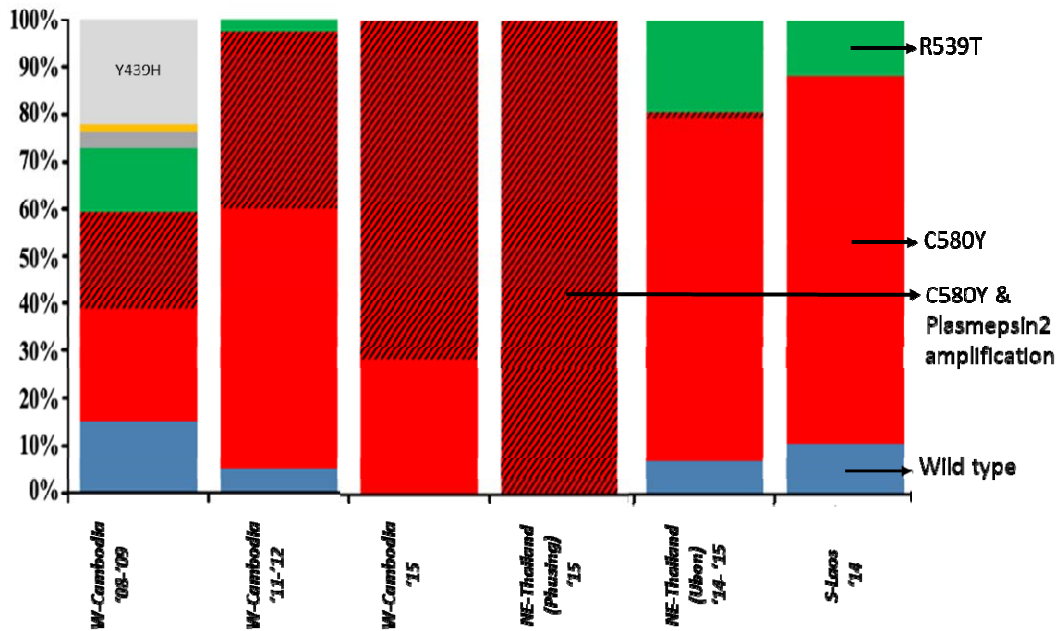
Median Joining Haplotype Network of K13 Mutations and SNPs within Linkage Disequilibrium of the K13 Propeller Protein



Neighbour-joining tree of samples carrying K13 SNPs

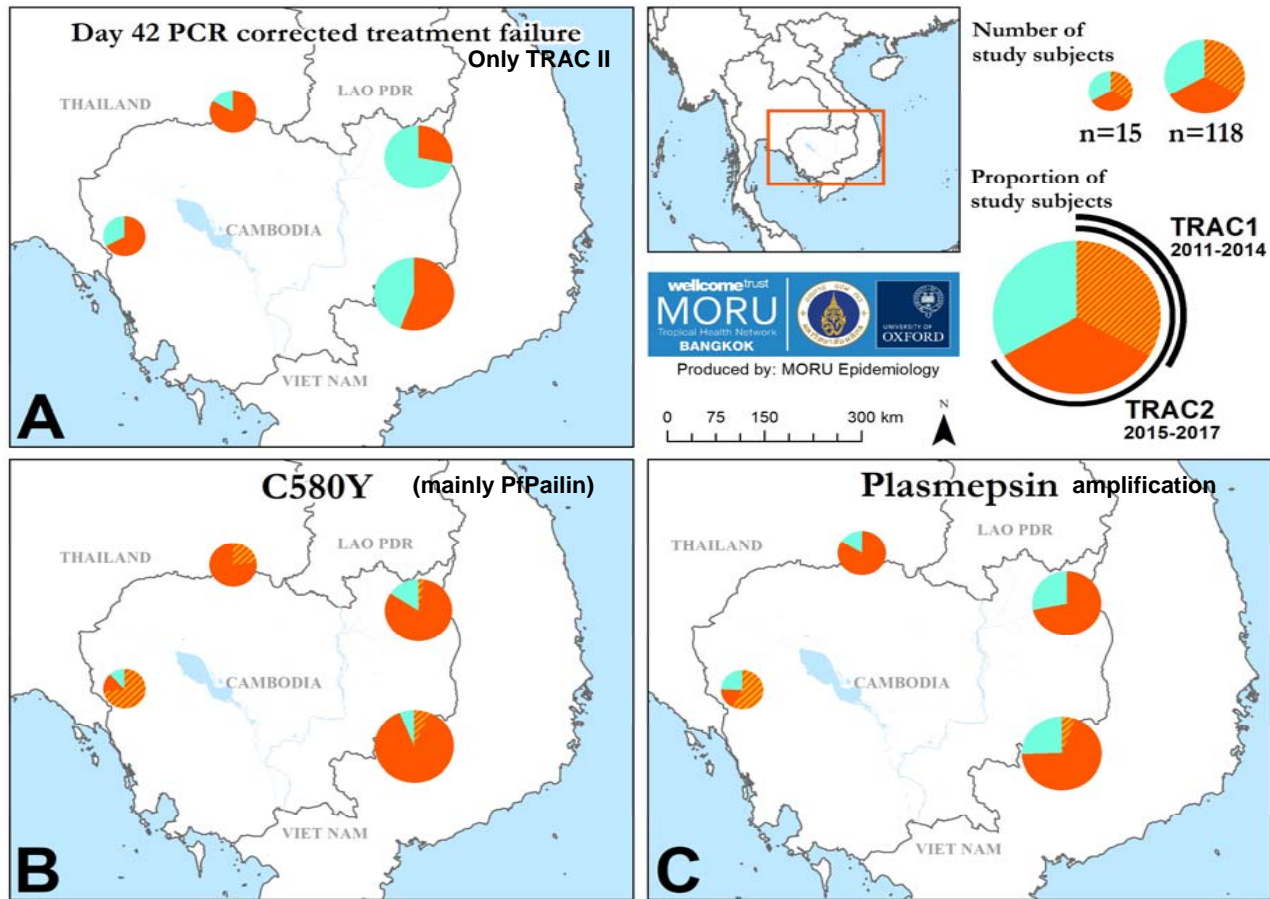
*K580Y mutant found in Myanmar did not spread from Cambodia -it arose independently in Myanmar*

# Over time: single long haplotype of C580Y spreads

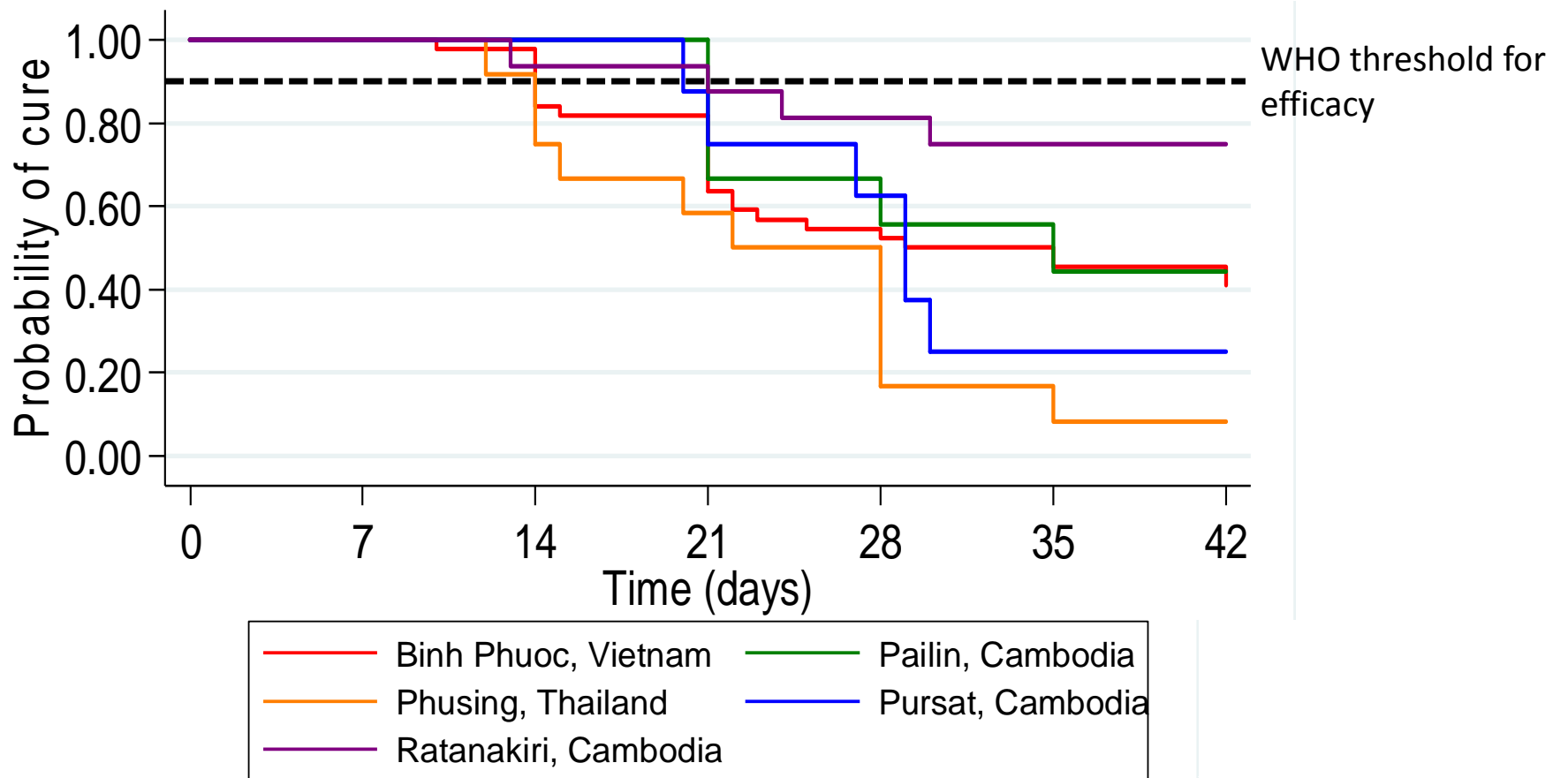


Immong et al.  
Lancet Infect Dis 2017

# And takes over



# Increasing failure of DHA-piperaquine (east of BKK)

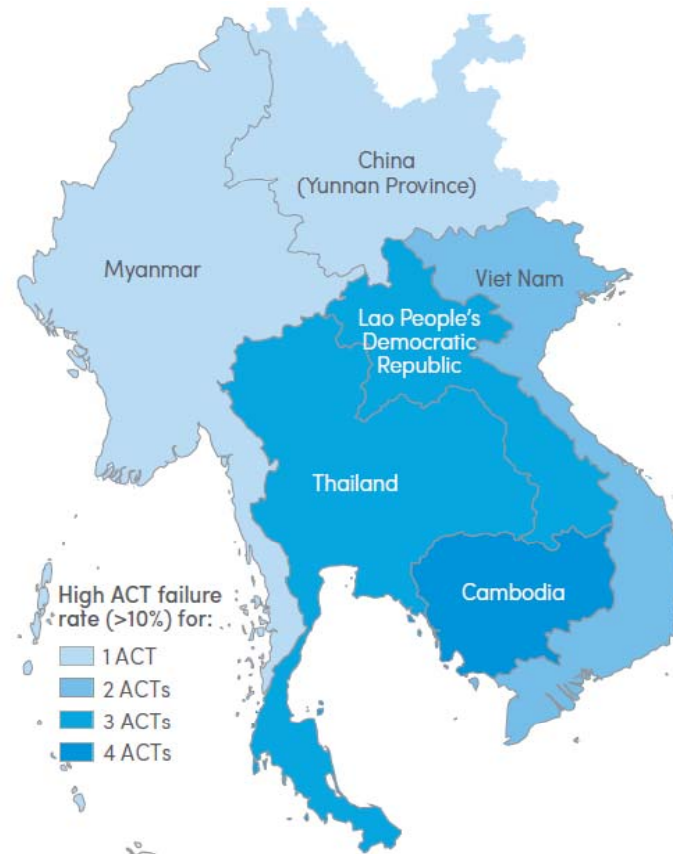


# PfCRT mutations p

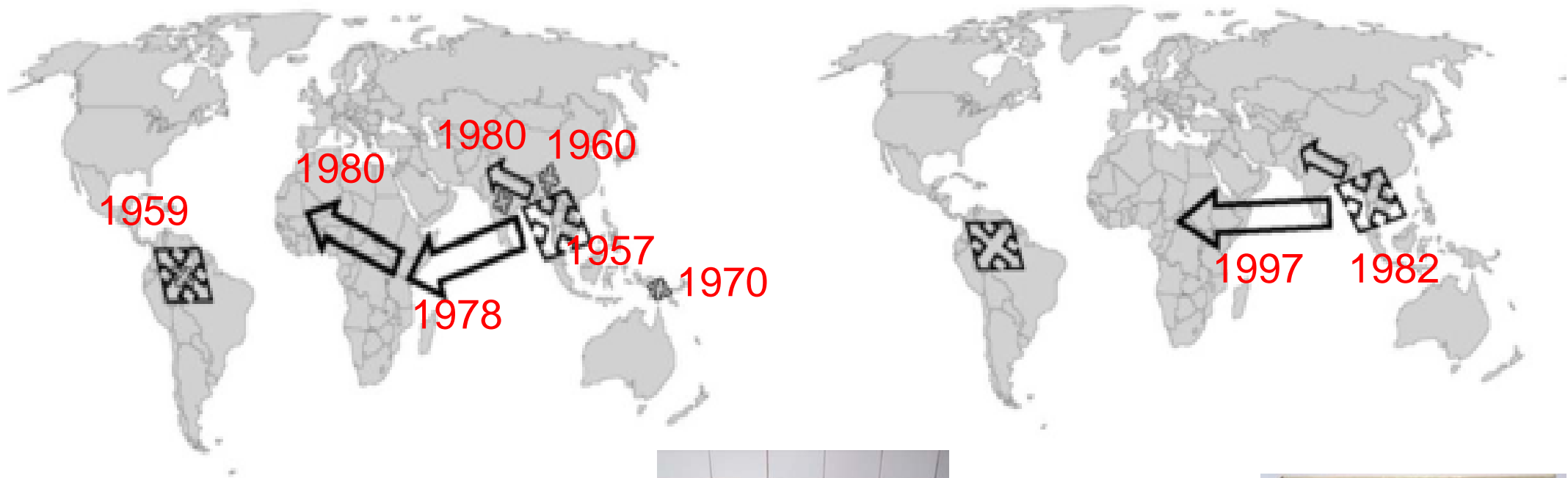
Time (days)



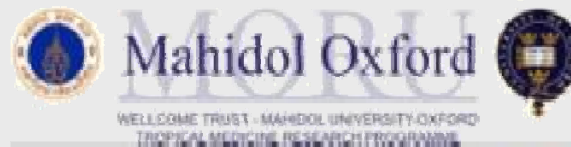
# ACT failure in the GMS



# Spread of resistance: chloroquine & pyrimethamine



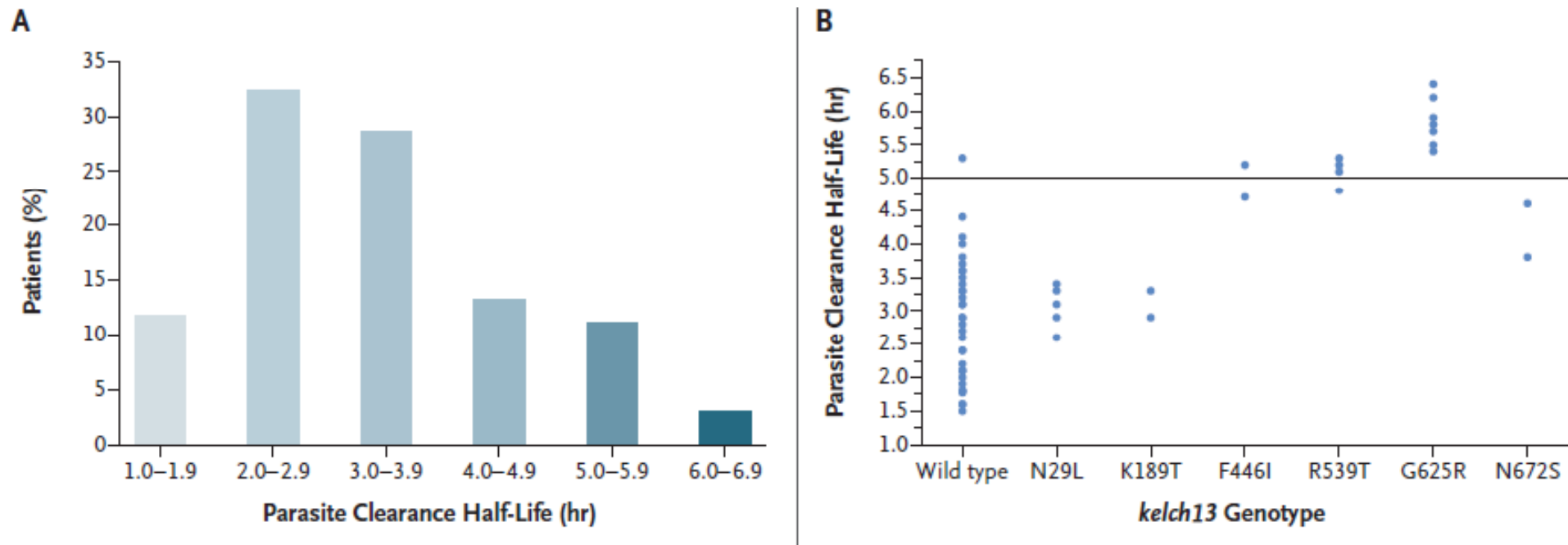
*Dondorp et al*  
*Nat Rev Microbiol. 2010*



*Adapted from Chris Plowe*

# Spread to India (West-Bengal)....?

2013-2014



Das et al  
*N Engl J Med* 2018



# Conclusion

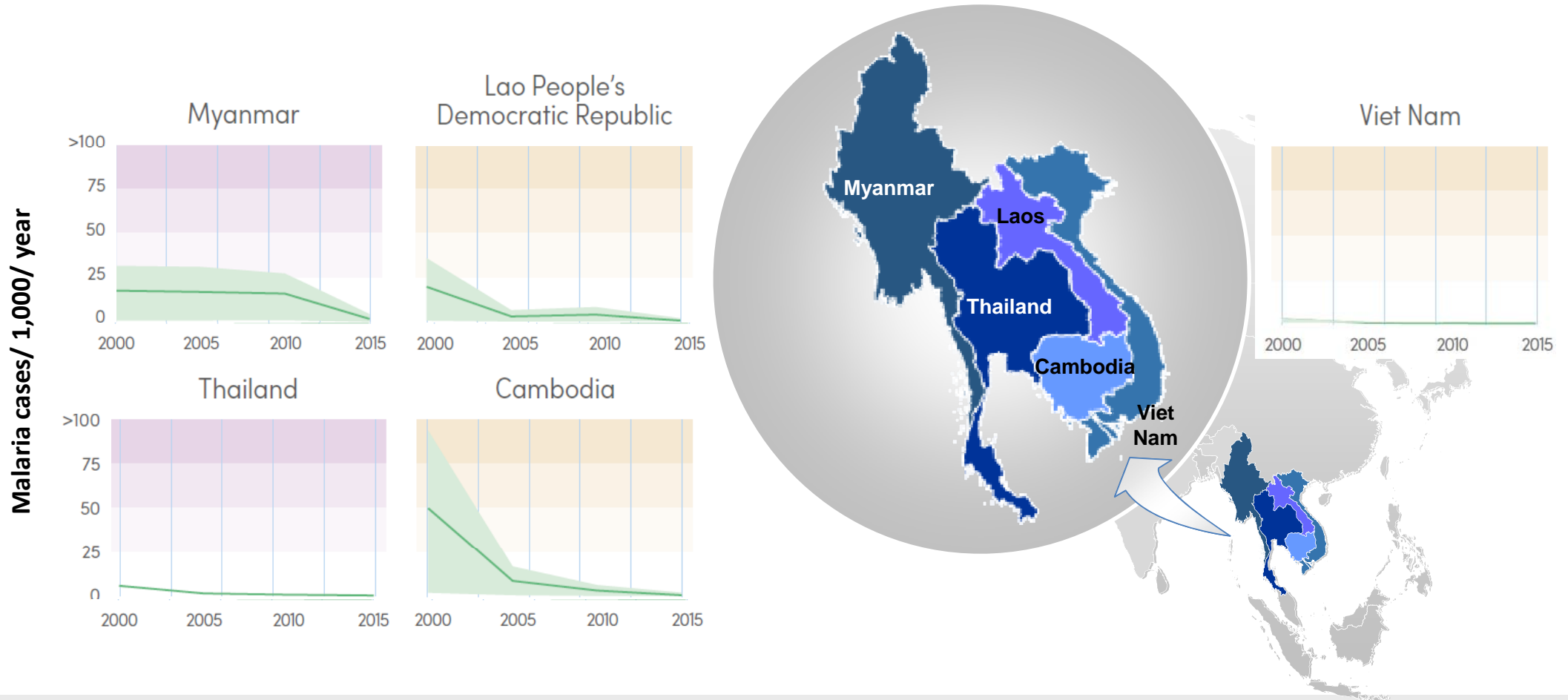
**Ever increasing artemisinin and partner drug resistance in the Greater Mekong Subregion  
This threatens malaria control in the GMS and can spread**

**We have to eliminate (falciparum) malaria from the GMS before it becomes untreatable  
and before it spreads further (India.....)**

**This requires: a sense of urgency, a common spirit, good governance, good coordination,  
regionally adapted integrated strategies, impact evaluation and good surveillance,  
collaboration between public and private sector, targeting difficult to reach populations,  
targeting the asymptomatic reservoir, adequate funding, and persistence till the end goal  
is reached!**



# Transmission is going down in the GMS



# *PfKelch13* $\Delta$ in Africa: no evidence for selection

