

ADULT FEMALE MOSQUITO

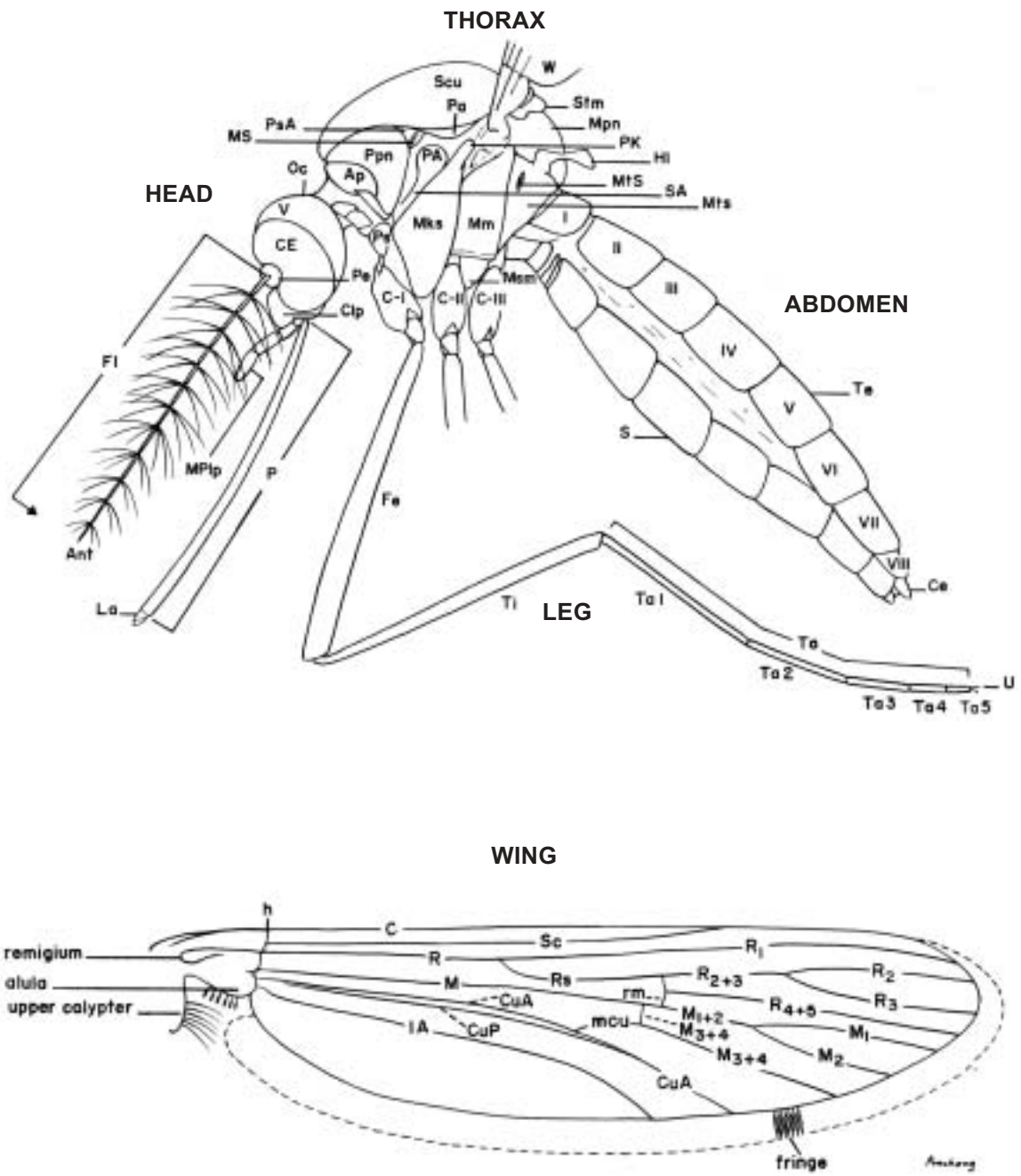


Fig 3—Adult female mosquito.

ABBREVIATIONS

ADULT

HEAD

Ant	=	antenna
CE	=	compound eye
Cip	=	clypeus
Fl	=	flagellum
La	=	labellum
MPIp	=	maxillary palpus
Oc	=	occiput
Pe	=	pedicel
P	=	proboscis
V	=	vertex

THORAX

Ap	=	antepronotum
HI	=	halter
Mks	=	mesokatepisternum
Mm	=	mesepimeron
Mpn	=	mesopostnotum
MS	=	mesothoracic spiracle
Msm	=	mesomeron
MtS	=	metathoracic spiracle
Mts	=	metepisternum
Pa	=	paratergite
PA	=	postspiracular area
PK	=	prealar knob
Ppn	=	postpronotum
Ps	=	proepisternum
PsA	=	prespiracular area
SA	=	subspiracular area
Scu	=	scutum
Stm	=	scutellum
W	=	wing

ABDOMEN

Ce	=	cercus
Te	=	tergum
S	=	sternum
1-VIII	=	abdominal segments

WING VEINS

C	=	costa
CuA	=	cubitus anterior
CuP	=	cubitus posterior
h	=	humeral crossvein
M	=	media
M ₁ , M ₂ , M ₁₊₂ , M ₃₊₄	=	branches of media
mcu	=	mediocubital crossvein
R	=	radius
R ₁ , R ₂ , R ₃ , R ₂₊₃ , R ₄₊₅	=	branches of radius
rm	=	radiomedial crossvein
Rs	=	radial sector
Sc	=	subcosta
1A	=	anal vein

LEG

C-I	=	forecoxa
C-II	=	midcoxa
C-III	=	hindcoxa
Fe	=	femur
Ta 1	=	tarsomere 1
Ta 2	=	tarsomere 2
Ta 3	=	tarsomere 3
Ta 4	=	tarsomere 4
Ta 5	=	tarsomere 5
Ti	=	tibia
U	=	unguis