

FOURTH-INSTAR CULICINE LARVA

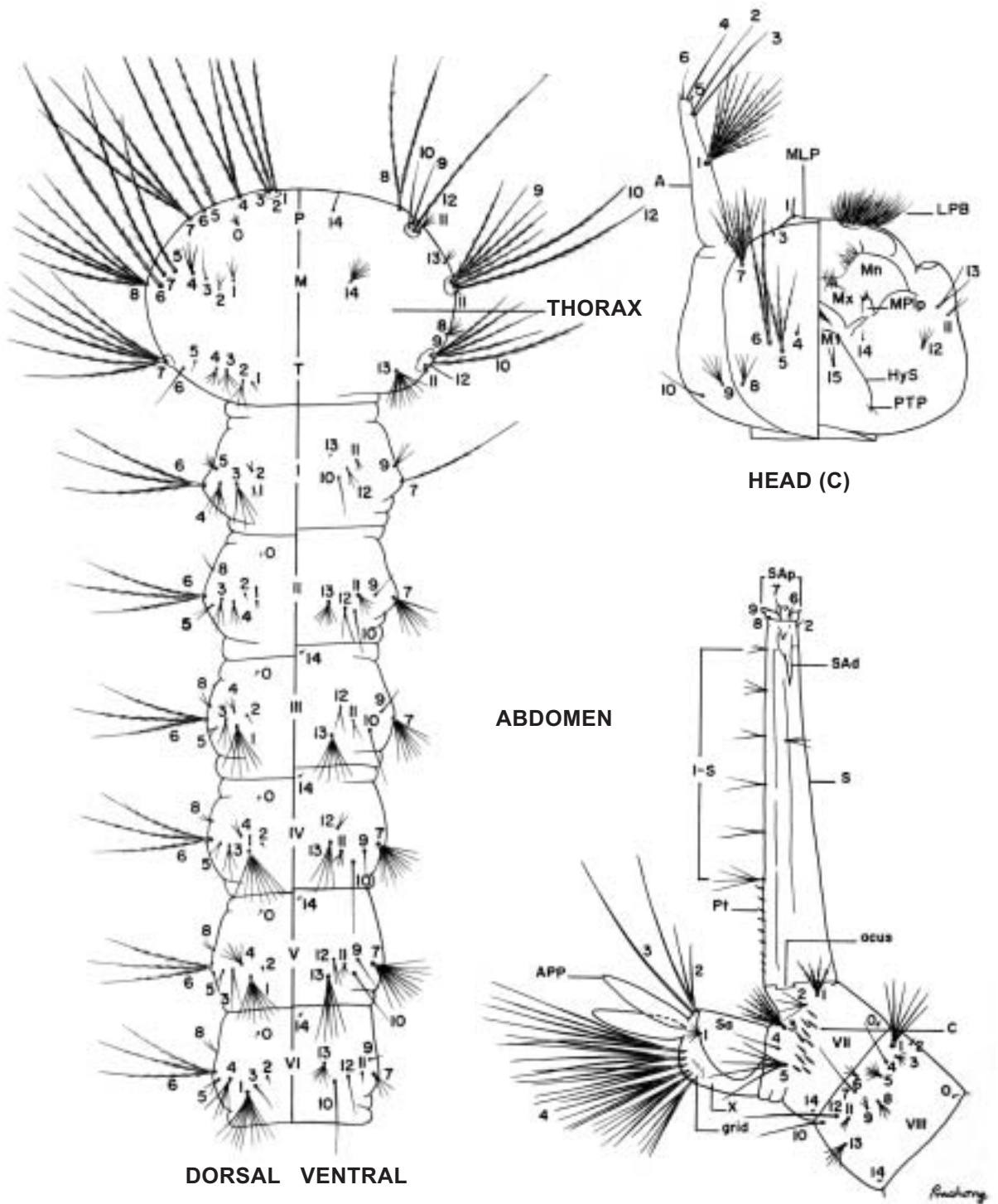


Fig 3—Fourth-instar Culicine larva.

ABBREVIATIONS

LARVA

HEAD

A	=	antenna
C	=	cranium head capsule
HyS	=	hypostomal suture
LPB	=	lateral palatal brush
MLP	=	median labral plate
Mn	=	mandible
MPIp	=	maxillary palpus
Mt	=	mentum
Mx	=	maxilla
PTP	=	posterior tentorial pit

ABDOMEN

APP	=	anal papilla
C	=	comb
Pt	=	pecten
S	=	siphon
SAd	=	spiracular apodeme
Sa	=	saddle
SAP	=	spiracular apparatus
I-VIII, X	=	abdominal segments
1-14	=	setae on designated areas, eg, seta 1-S

THORAX

P	=	prothorax
M	=	mesothorax
T	=	metathorax
1-14	=	setae on designated areas, eg, seta 1-M, seta 1-T