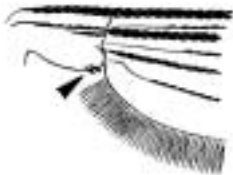


KEY TO THE SUBGENERA OF *URANOETAENIA*  
ADULT FEMALES

Characters: Wing with vein 1A reaching posterior margin before or at most very slightly beyond base of crossvein mcu; upper calypter bare, vein  $R_{2+3}$  longer than  $R_2$ ; wing membrane with inconspicuous microtrichia

1. Prealar area not separated from mesokatepisternum by suture
2. Alula with few broad dorsomarginal scales (except *Ur. maxima*) or
3. Erect head scales with long slender basal stems and broadly expanded apices, numerous, and covering most of vertex

1. Prealar area separated from mesokatepisternum by suture
2. Alula bare
3. Erect head scales usually absent, when present usually few small stout scales on occiput or rarely few long slender scales on vertex



Subgenus *Pseudoficalbia*

Subgenus *Uranotaenia*

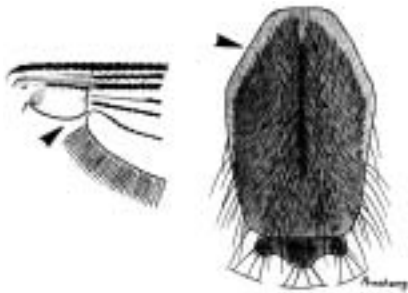
↳ To PLATE 13

↳ To PLATE 24

KEY TO THE SPECIES OF SUBGENUS *PSEUDOFICALBIA*  
ADULT FEMALES

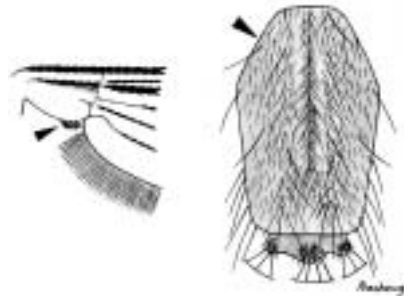
From PLATE 12: Prealar area not separated from mesokatepisternum by suture; alula with few broad dorsomarginal scales **or** erect head scales with long slender basal stems and broadly expanded apices, numerous, and covering most of vertex

- 1. Alula bare
- 2. Scutum with distinct broad lateral marginal line of white scales, some of which are distinctly broad

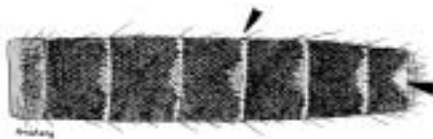


*Ur. maxima*

- 1. Alula with few broad scales on margin
- 2. Scutum with or without marginal line of pale scales

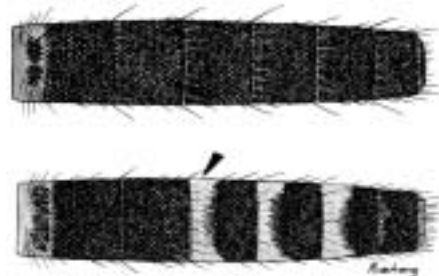


Terga II-VI with narrow apical white bands, tergum VII with median apical white patch



*Ur. albipes*

Terga II-VII uniformly dark-scaled or two or more terga with basal pale bands or basolateral patches



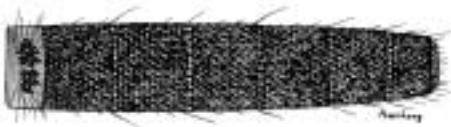
→ To PLATE 14

PLATE 14

From PLATE 13: Terga II-VII uniformly dark-scaled or two or more terga with basal pale bands or basolateral patches

Abdominal terga uniformly dark-scaled

Two or more abdominal terga with basal pale bands or basolateral pale patches



↳ To PLATE 19 (Above)

Scutal integument with large oval, bare, supraalar dark spot, with at least narrow pale area on anterior margin separated from darker areas of scutum

Scutal integument without large oval supraalar dark spot, but area may occasionally appear slightly darker than surrounding areas



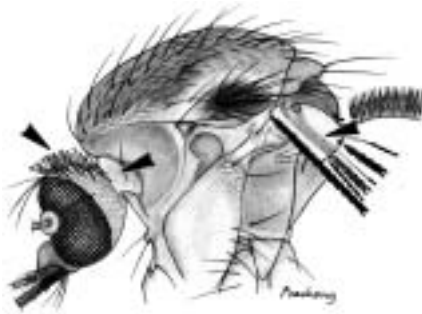
↳ To PLATE 15 (Above)

↳ To PLATE 15 (Below)

PLATE 15

From PLATE 14: Scutal integument with large oval, bare, supraalar dark spot, with at least narrow pale area on anterior margin separated from darker areas of scutum

1. Anteppronotum without scales
2. Erect head scales numerous, very conspicuous, evenly distributed over entire vertex
3. Remigium of wing usually with few pale ochreous or grayish scales, or entirely pale grayish white



*Ur. novobscura*

1. Anteppronotum with 3-6 broad grayish translucent scales at middle
2. Erect head scales few, restricted mostly to marginal row on occiput and ocular line
3. Remigium completely dark-scaled

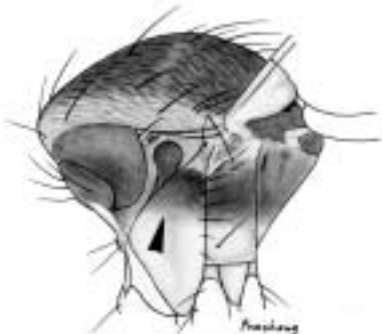


*Ur. bimaculata*

From PLATE 14: Scutal integument without large oval supraalar dark spot, but area may occasionally appear slightly darker than surrounding areas

Thoracic pleura with distinct, broad, dark band across upper half **or** with 2 or more distinct dark areas involving at least upper mesokatepisternum and all of mesepimeron, which strongly contrasts with pale areas

Thoracic pleura uniform in color, or occasionally with postpronotum or postspiracular area and upper edge of mesokatepisternum slightly darker, when this occurs mesepimeron always without median patch of scales



↳ To PLATE 16

↳ To PLATE 17

From PLATE 15: Thoracic pleura with distinct, broad, dark band across upper half or with 2 or more distinct dark areas involving at least upper mesokatepisternum and all of mesepimeron, which strongly contrasts with pale areas

1. Scutum without lateral marginal line of gray-white scales
2. Mesokatepisternum with at least small patch of light translucent scales on upper 0.5



1. Scutum with distinct lateral marginal line of gray-white scales
2. Mesokatepisternum without scales on upper 0.5



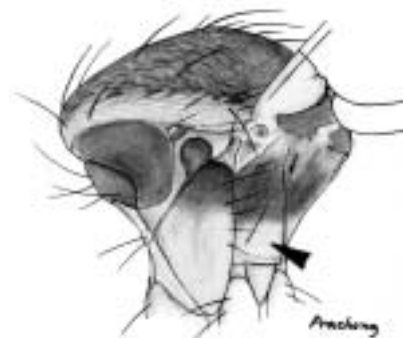
*Ur. pseudomaculipleura*

1. Scutal integument uniformly dark brown or brownish black, except for pale narrow lateral marginal line
2. Mesepimeron entirely dark



*Ur. modesta*

1. Scutal integument light brown, except for very pale narrow lateral marginal line
2. Mesepimeron pale on lower area



*Ur. patriciae*

PLATE 17

From PLATE 15: Thoracic pleura uniform in color, or occasionally with postpronotum or postspiracular area and upper edge of mesokatepisternum slightly darker, when this occurs mesepimeron always without median patch of scales

1. Integument of scutum and mesopostnotum dark reddish or rust brown, except for pale narrow lateral marginal line on scutum
2. Thoracic pleura uniformly pale yellow or yellowish orange and sharply contrasting with dark scutum
3. Anteprenotum without scales

1. Integument of scutum and mesopostnotum usually light or pale brown, without pale narrow lateral marginal line on scutum
2. Thoracic pleura dark, variable in color but not sharply contrasting with scutum
3. Anteprenotum with or without scales



*Ur. nivipleura*



1. Anteprenotum and mesokatepisternum without scales
2. Femora distinctly white or grayish white ventrally

1. Scales present on anteprenotum and/or mesokatepisternum, but never absent from both
2. Femora usually light brown ventrally, never white or grayish white



*Ur. gouldi*



→ To PLATE 18

From PLATE 17: Scales present on antepronotum and/or mesokatepisternum, but never absent from both; femora usually light brown ventrally, never white or grayish white

1. Integument of scutum and mesopostnotum very light, pale brown or yellow
2. Thoracic pleura uniformly pale grayish, or whitish brown, both sharply contrasting with darker abdominal terga



1. Integument of scutum and mesopostnotum dark brown or scutum occasionally light brown with narrow darker median and submedian lines
2. Thoracic pleura uniformly dark brown with indefinite darker areas, and not contrasting sharply with abdominal terga



↳ To PLATE 19 (Below)

Antepronotum with numerous light (grayish) brown scales, 1-3 long, stout setae and 4-8 small weak setae on lower margin



*Ur. sumethi*

Antepronotum without scales or with only one long, stout seta on lower margin



*Ur. nocticola*

PLATE 19

From PLATE 14: Two or more abdominal terga with basal pale bands or basolateral pale patches

Thoracic pleura with several distinct dark brown or dark areas involving at least antepronotum and postpronotum, which strongly contrast with pale areas, or predominantly dark brown



↳ To PLATE 20 (Above)

Thoracic pleura uniformly pale, usually yellow, pale grayish brown or whitish



↳ To PLATE 22 (Above)

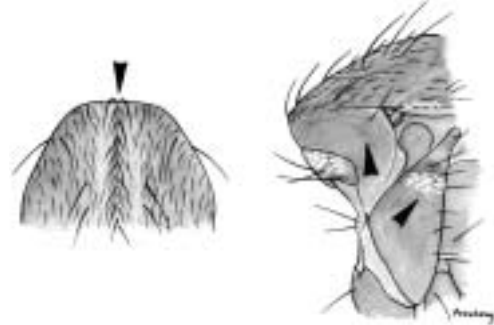
From PLATE 18: Integument of scutum and mesopostnotum dark brown or scutum occasionally light brown with narrow darker median and submedian lines; thoracic pleura uniformly dark brown with indefinite darker areas, and not contrasting sharply with abdominal terga

1. Scutum with 3 small patches of broad pale grayish or bronzy translucent scales on anterior promontory at acrostichal and dorsocentral lines
2. Mesokatepisternum without patch of scales
3. Postpronotum with conspicuous patch of light brown translucent scales



*Ur. obscura*

1. Scutum without broad scales on anterior promontory
2. Mesokatepisternum with patch of scattered grayish translucent or transparent scales
3. Postpronotum with or without light grayish translucent scales

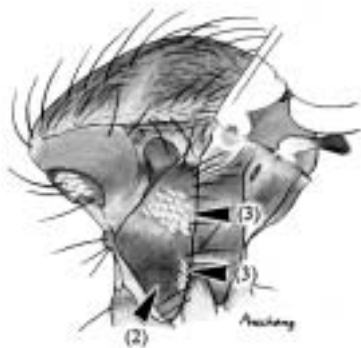


↳ To PLATE 20 (Below)



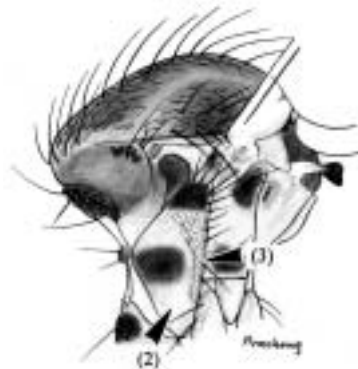
From PLATE 19: Thoracic pleura with several distinct dark brown or dark areas involving at least anteppronotum and postpronotum, which strongly contrast with pale areas, or predominantly dark brown

1. Thoracic pleura predominantly dark brown with indefinite pattern of narrow pale marginal areas on some sclerites
2. Lower 0.5 of mesokatepisternum dark
3. Mesokatepisternum with two separate patches of scales, one small patch on lower 0.6 of posterior margin



*Ur. bicolor*

1. Thoracic pleura with distinct pattern of narrow pale marginal areas on some sclerites
2. Lower 0.25 or more of mesokatepisternum always pale
3. Mesokatepisternum with patch of scales on upper 0.5 and usually with narrow continuous extension down posterior margin



➤ To PLATE 21

From PLATE 19: Scutum without broad scales on anterior promontory; mesokatepisternum with patch of scattered grayish translucent or transparent scales; postpronotum with or without light grayish translucent scales

1. Midfemur with numerous long setae encircling area between 0.45-0.70 from base
2. Postpronotum without scales



*Ur. hirsutifemora*

1. Midfemur without numerous long setae encircling this area
2. Postpronotum with light brown or grayish translucent scales



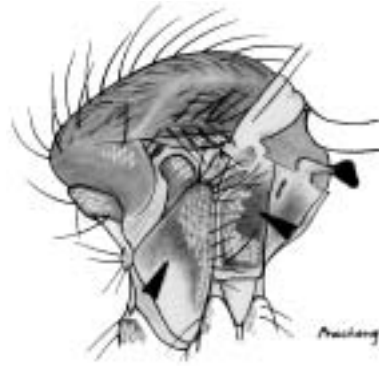
*Ur. abstrusa*

PLATE 21

From PLATE 20: Thoracic pleura with distinct pattern of narrow pale marginal areas on some sclerites; lower 0.25 or more of mesokatepisternum always pale; mesokatepisternum with patch of scales on upper 0.5 and usually with narrow continuous extension down posterior margin

1. Mesepimeron pale
2. Upper edge of mesokatepisternum dark, remaining sclerites pale

1. Mesepimeron dark or with distinct upper and lower dark areas
2. Upper 0.5 of mesokatepisternum dark or with two large distinct dark areas



*Ur. approximata*

1. Mesokatepisternum with dark area involving upper 0.5 or more
2. Postspiracular area and paratergite with patch of grayish scales

1. Mesokatepisternum with two dark areas
2. Postspiracular area and paratergite bare



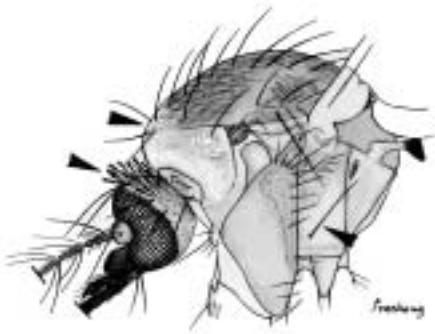
*Ur. spiculosa*

To PLATE 22 (Below)

From PLATE 19: Thoracic pleura uniformly pale, usually yellow, pale grayish brown or whitish

1. Scutum with distinct patch of grayish-white scales on anterior margin
2. Lower mesepimeral seta long, stout, at least 1.5 length of setae on upper mesokatepisternum and mesepimeron
3. Erect head scales long, rather dense, longer than 0.5 length of antennal flagellomere 2

1. Scutum with light or dark brown scales on anterior margin, occasionally few gray scales
2. Lower mesepimeral seta short, weak, not longer than setae on upper mesokatepisternum and mesepimeron
3. Erect head scales short and rather sparse, less than 0.5 length of antennal flagellomere 2



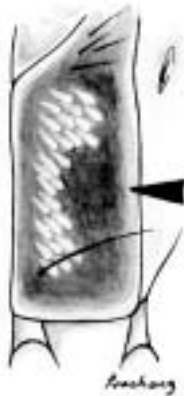
*Ur. abdita* and *Ur. enigmatica*

↳ To PLATE 23

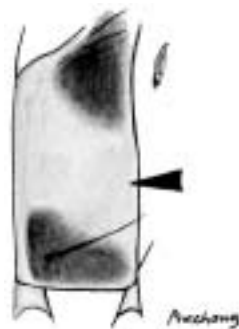
From PLATE 21: Mesokatepisternum with two dark areas; postspiracular area and paratergite bare

Mesepimeron dark except for very narrow pale margins and with median patch of grayish-white translucent scales

Mesepimeron with broad median pale area separating upper and lower dark spots, without scales



*Ur. stricklandi*



*Ur. koli*

PLATE 23

From PLATE 22: Scutum with light or dark brown scales on anterior margin, occasionally few gray scales; lower mesepimeral seta short, weak, not longer than setae on upper mesokatepisternum and mesepimeron; erect head scales short and rather sparse, less than 0.5 length of antennal flagellomere 2

1. Abdominal terga IV-VI with basal pale bands expanding to broad lateral patches, or basal band and lateral patches separated
2. Terga II, III, and VII usually with narrow bands
3. Postpronotum without scales

1. Abdominal terga IV-VI with narrow basal pale bands, less than 0.25 length of segment, conspicuous only on V and VI
2. Terga II, III, and VII dark or with faint bands
3. Postpronotum with distinct upper posterior patch of scales



*Ur. lutescens*

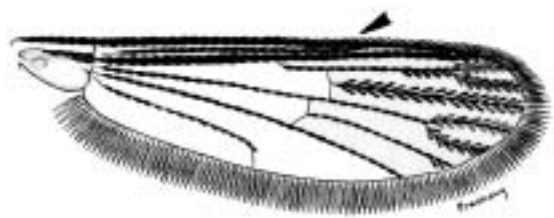
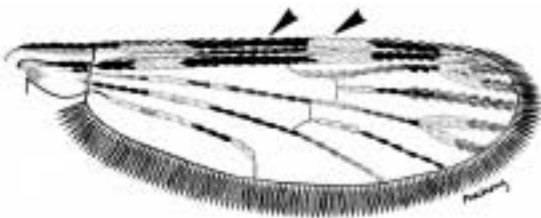
*Ur. demeilloni*

KEY TO THE SPECIES OF SUBGENUS *URANOTAENIA*  
ADULT FEMALES<sup>a</sup>

From PLATE 12: Prealar area separated from mesokatepisternum by suture; alula bare; erect head scales usually absent, when present usually few small stout scales on occiput or rarely few long slender scales on vertex

Wing with distinct pattern of pale and dark spots

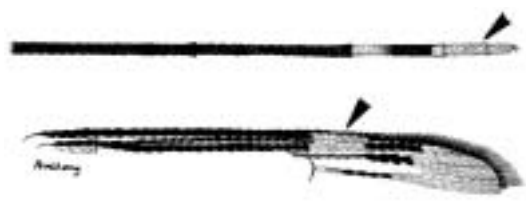
Wing without distinct pattern of pale and dark spots, some pale scales at base of some veins



↳ To PLATE 27 (Above)

1. Hindtarsomeres entirely dark or with faint patches of pale marking
2. Wing without subcostal pale spot on costa and R<sub>1</sub>

1. Hindtarsomeres with distinct patches of white markings or bands
2. Wing with subcostal pale spot on costa and R<sub>1</sub>



↳ To PLATE 25 (Above)

↳ To PLATE 25 (Below)

<sup>a</sup> The adult female of *Uranotaenia* species 2 is not known.

PLATE 25

From PLATE 24: Hindtarsomeres entirely dark or with faint patches of pale marking; wing without subcostal pale spot on costa and  $R_1$

Scutum with broad line of pale scales along lateral and anterior margins



*Ur. orientalis*

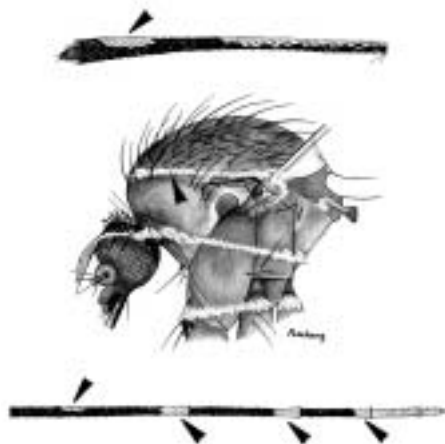
Scutum without broad line of pale scales along lateral and anterior margins



*Ur. diraphati*

From PLATE 24: Hindtarsomeres with distinct patches of white markings or bands; wing with subcostal pale spot on costa and  $R_1$

1. Proboscis with distal white patch of scales dorsally
2. Scutum with distinct line of broad white scales along lateral and anterior margins
3. Hindtarsomere 1 with median white patch and apical pale band, hindtarsomeres 2 and 3 with apical white bands or patches



*Ur. trilineata*

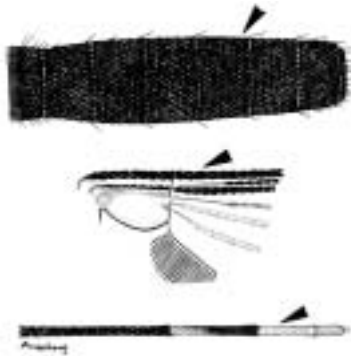
1. Proboscis entirely dark
2. Scutum without line of broad white scales along lateral and anterior margins
3. Hindtarsomere 1 without median white patch and apical pale band, hindtarsomeres 2 and 3 with basal white bands or patches



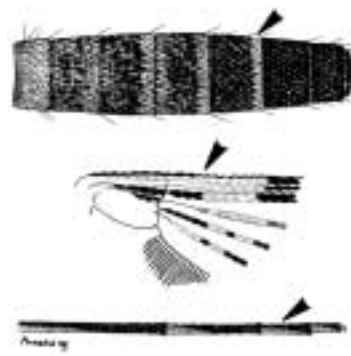
↳ To PLATE 26

From PLATE 25: Proboscis entirely dark; scutum without line of broad white scales along lateral and anterior margins; hindtarsomere 1 without median white patch and apical pale band, hindtarsomeres 2 and 3 with basal white bands or patches

1. Abdominal terga III-V entirely dark or with narrow apical pale patches
2. Proximal portion of costa entirely dark-scaled
3. Hindtarsomeres 4 and 5 entirely pale-scaled

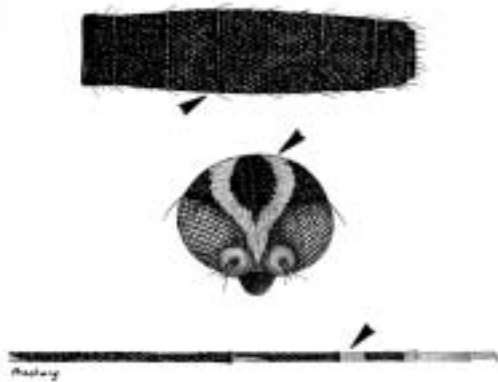


1. Abdominal terga III-V with broad apical pale bands or patches
2. Proximal portion of costa with white scaling
3. Hindtarsomeres 4 and 5 not entirely pale-scaled



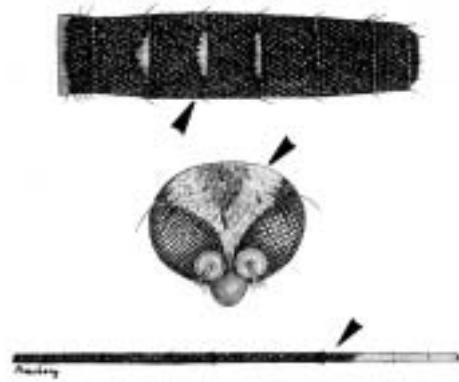
↳ To PLATE 27 (Below)

1. Abdominal terga entirely dark
2. Vertex with narrow submedian stripes of pale scales
3. Hindtarsomere 3 with basal pale band



*Ur. bimaculiala*

1. Abdominal terga with narrow apical pale patches
2. Vertex without submedian stripes of pale scales
3. Hindtarsomere 3 with basal dark band



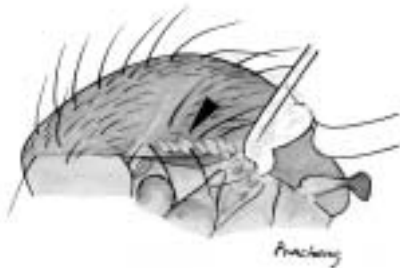
*Ur. species 4*

PLATE 27

From PLATE 24: Wing without distinct pattern of pale and dark spots, some pale scales at base of some veins

Scutum with distinct line of broad white, blue, or cream-colored scales from wing base to scutal angle

Scutum without line of broad white, blue, or cream-colored scales from wing base to scutal angle



↳ To PLATE 28

↳ To PLATE 30 (Above)

From PLATE 26: Abdominal terga III-V with broad apical pale bands or patches; proximal portion of costa with white scaling; hindtarsomeres 4 and 5 not entirely pale-scaled

1. Decumbent scales of vertex dark without narrow submedian bluish-white stripes extending to anterior margin
2. Bases of hindtarsomeres 2-4 with faint pale basal bands or ventral patches, hindtarsomere 5 entirely pale

1. Decumbent scales of vertex dark with narrow submedian white stripes extending to anterior margin
2. Bases of hindtarsomeres 2-4 with broad pale bands or ventral patches, hindtarsomere 5 pale ventrally



No specimens available for this study



*Ur. edwardsi*

*Ur. micans*



From PLATE 27: Scutum with distinct line of broad white, blue, or cream-colored scales from wing base to scutal angle

1. Proboscis longer than entire body
2. Abdominal terga with large apicolateral white patches, may form complete band on tergum IV only

1. Proboscis not longer than entire body
2. Abdominal terga with either apicolateral white patches or apicomedian dorsal white patches or bands, or both

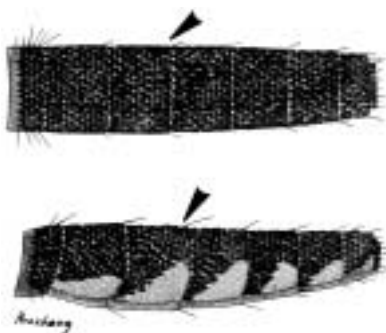


*Ur. longirostris*



Abdominal terga I-IV entirely dark, or terga with apicolateral pale patches on II-VII

Abdominal terga III-V with median apical pale patches separated from lateral pale patches on at least one segment, some segments with complete pale band



↳ To PLATE 29 (Above)

↳ To PLATE 29 (Below)

PLATE 29

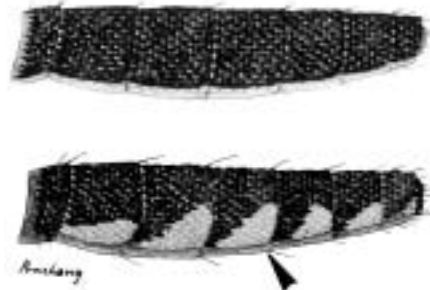
From PLATE 28: Abdominal terga I-IV entirely dark, or terga with apicolateral pale patches on II-VII

Abdominal terga I-VII entirely dark, except tergum V with complete apical pale band



*Ur. rampae*

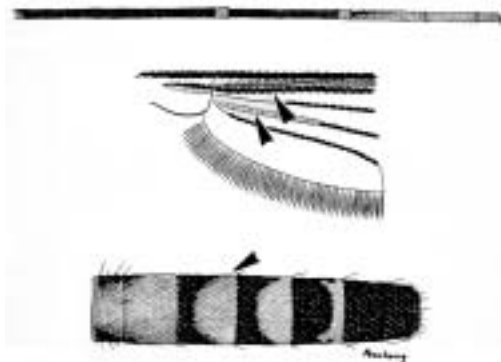
Abdominal terga III-VI entirely dark<sup>a</sup> or with apicolateral white patches



*Ur. lateralis*  
and *Ur. subnormalis*

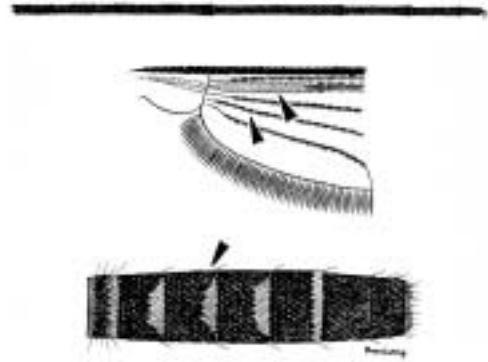
From PLATE 28: Abdominal terga III-V with median apical palepatches separated from lateral pale patches on at least one segment, some segments with complete pale band

1. Hindtarsomeres 1 and 2 with apical pale bands, 4 and 5 pale-scaled and/or with longitudinal pale line ventrally
2. Base of vein R dark-scaled, base of vein CuA usually pale-scaled
3. Abdominal terga II-IV with broad apical pale bands or patches more than 0.5 length of segment



*Ur. species 3*

1. Hindtarsomeres 1 and 2 without apical pale bands, 4 and 5 dark-scaled or with faint longitudinal pale line ventrally
2. Base of vein R pale-scaled, base of vein CuA usually dark-scaled
3. Abdominal terga II-IV with apical pale bands or patches 0.5 or less length of segment



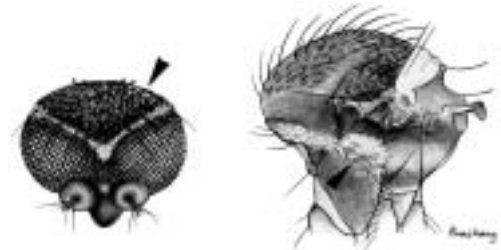
➤ To PLATE 30 (Below)

<sup>a</sup>Some unknown species with abdominal terga entirely dark may key to this couplet. If the specimen (s) also have hindtarsomeres 3-5 white, be aware that *Ur. lateralis* and *Ur. subnormalis* (also *Ur. rampae*) have hindtarsomeres 3-5 entirely dark.

From PLATE 27: Scutum without line of broad white, blue, or cream-colored scales from wing base to scutal angle

1. Decumbent scales of vertex predominantly broad and dark without orbital line of pale scales
2. Thoracic pleura uniformly pale yellow and sharply contrasted with dark reddish scutum and mesopostnotum

1. Decumbent scales of vertex predominantly dull gray-white to brilliant blue-white, with narrow orbital line of silvery scales or dull white scales
2. Thoracic pleura with line or patch of bluish white or white scales



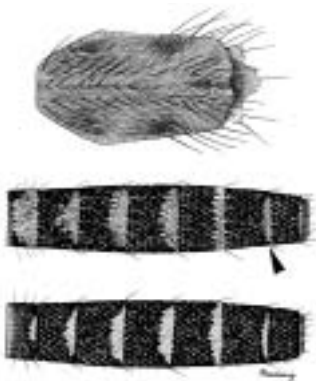
*Ur. metatarsata*

↳ To PLATE 31

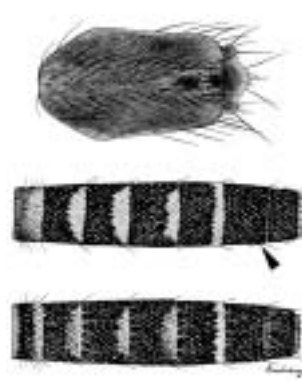
From PLATE 29: Hindtarsomeres 1 and 2 without apical pale bands, 4 and 5 dark-scaled or with faint longitudinal pale line ventrally; base of vein R pale-scaled, base of vein CuA usually dark-scaled; abdominal terga II-IV with apical pale bands or patches 0.5 or less length of segment

1. Scutal integument pale brown with mixture of pale to dark brown scales or setae
2. Abdominal tergum VI with small median pale patch, tergum I entirely pale or apically

1. Scutal integument dark brown with either pale or dark brown scales or setae
2. Abdominal tergum VI completely dark or with indistinct apical pale patch, tergum I variable



*Ur. macfarlanei*<sup>a</sup>



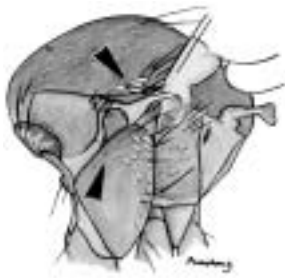
*Ur. campestris*<sup>a</sup>

<sup>a</sup> These are complexes of species that are difficult to identify. Some unknown species may key to these couplets.

PLATE 31

From PLATE 30: Decumbent scales of vertex predominantly dull gray-white to brilliant blue-white, with narrow orbital line of silvery scales or dull white scales; thoracic pleura with line or patch of bluish white or white scales

1. Thoracic pleura without line of bluish white scales extending from anteprenotum onto mesokatepisternum
2. Scutum with few broad white scales above paratergites



*Ur. hebes*

1. Thoracic pleura with line of bluish white scales extending from anteprenotum onto mesokatepisternum
2. Scutum without white scales above paratergites



Hindtarsomeres 4 and 5 white-scaled



Hindtarsomeres 4 and 5 entirely dark-scaled



➔ To PLATE 32

Base of hindtarsomere 3 white-scaled



*Ur. testacea* (in part)

Base of hindtarsomere 3 dark-scaled



*Ur. species 1* and *Ur. testacea* (in part)

From PLATE 31: Hindtarsomeres 4 and 5 entirely dark-scaled

Supraalar area with distinct patch of moderately broad grayish or grayish brown scales

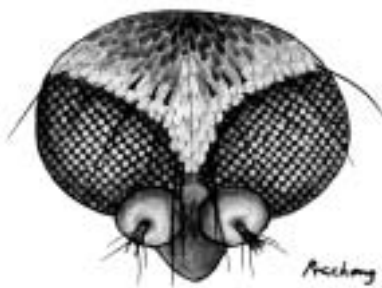
Supraalar area with patch of narrow to moderately broad pale to brown scales



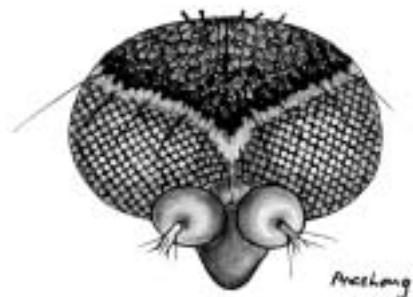
*Ur. annandalei*

Decumbent scales of vertex predominantly pale bluish white with only very faint tinge of brown on occiput

Decumbent scales of vertex predominantly dark with narrow ocular line of silvery or dull white scales



*Ur. prajimi*



*Ur. sombooni*