

Fig 2—Distributions of Aitkenii and Culiciformis Groups of *Anopheles (Anopheles)*.

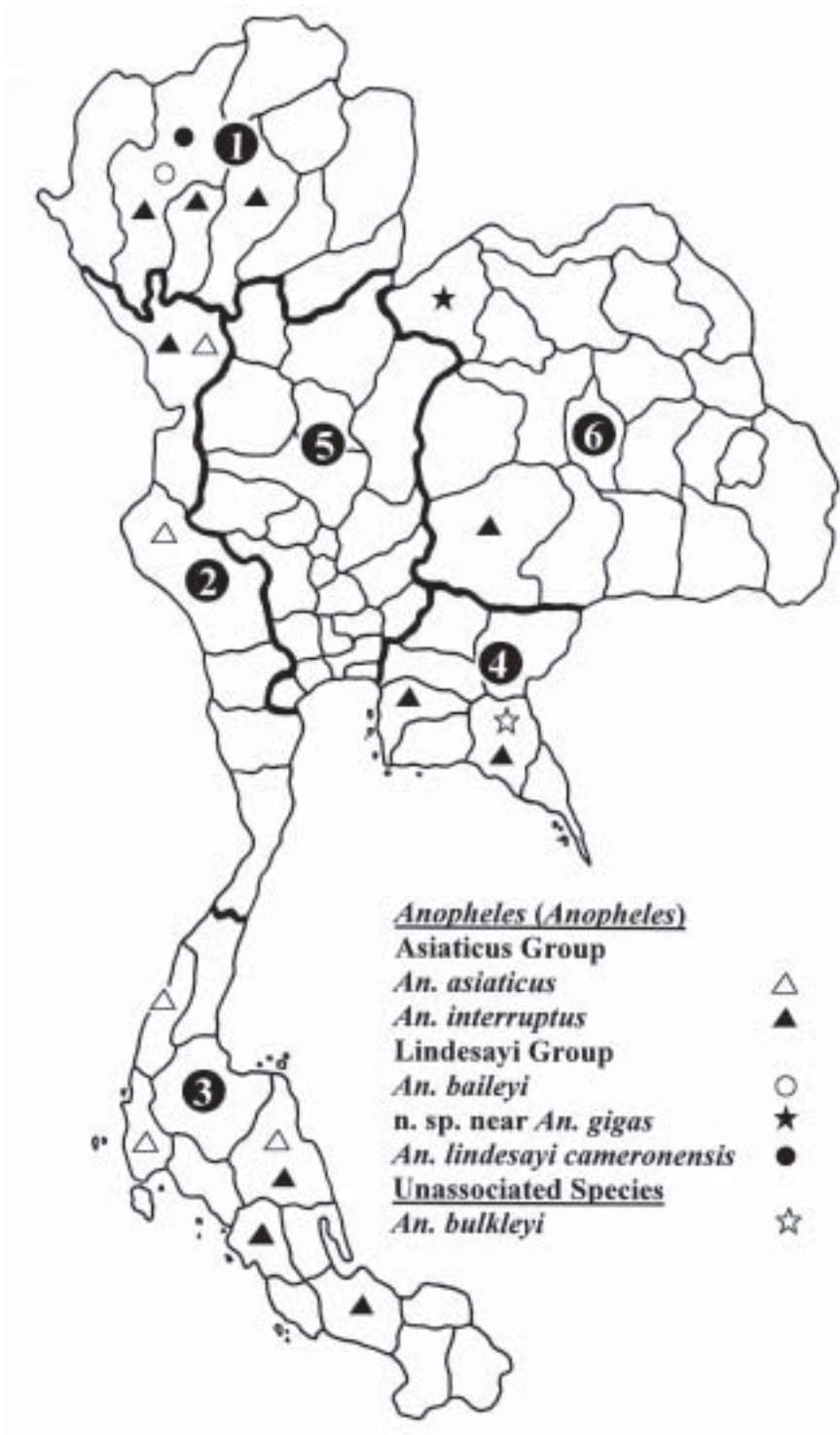


Fig 3—Distributions of Asiaticus and Lindesayi Groups, and *An. bulkeleyi* of *Anopheles* (*Anopheles*).

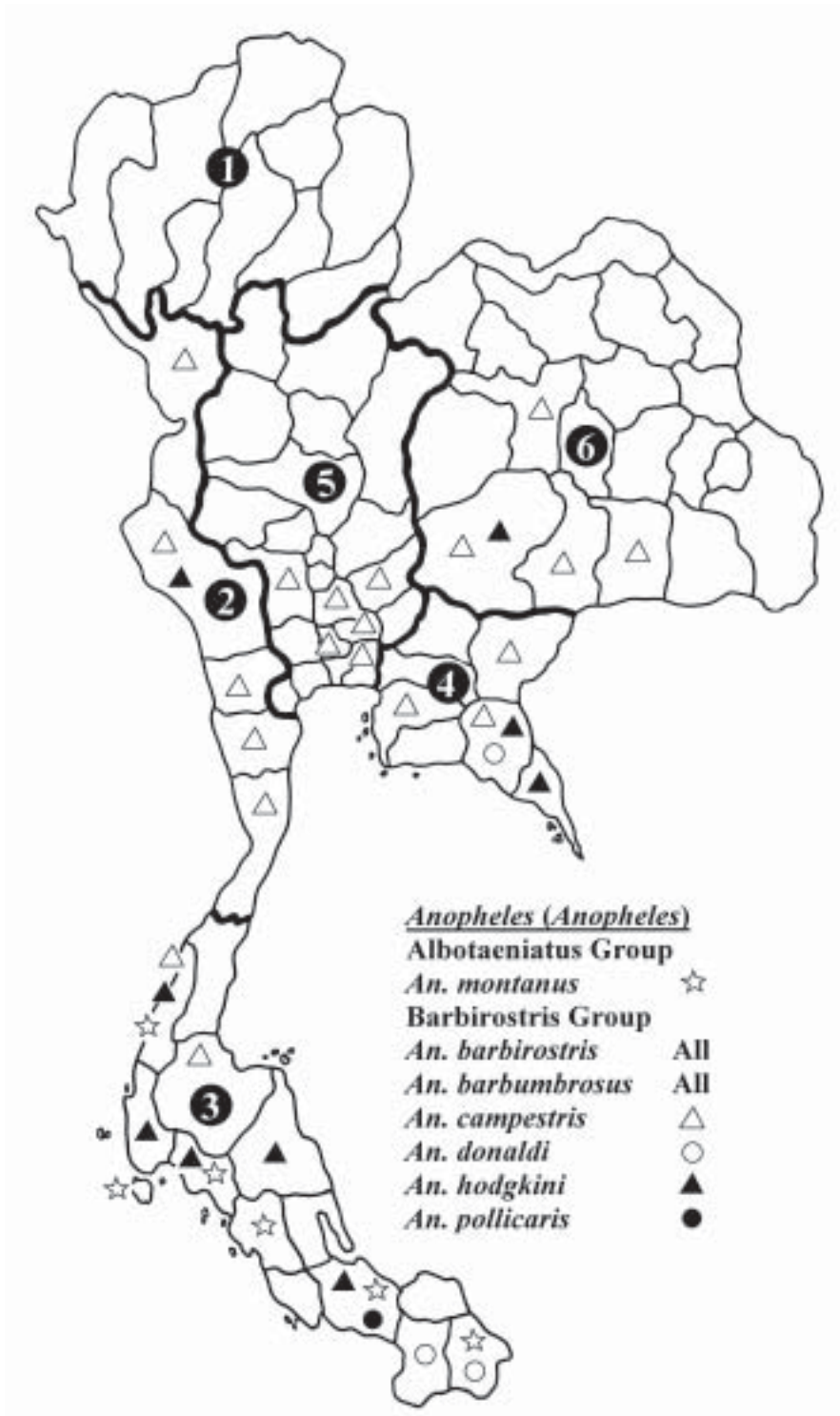


Fig 4—Distributions of Albotaeiniatus and Barbirostris Groups of *Anopheles (Anopheles)*.

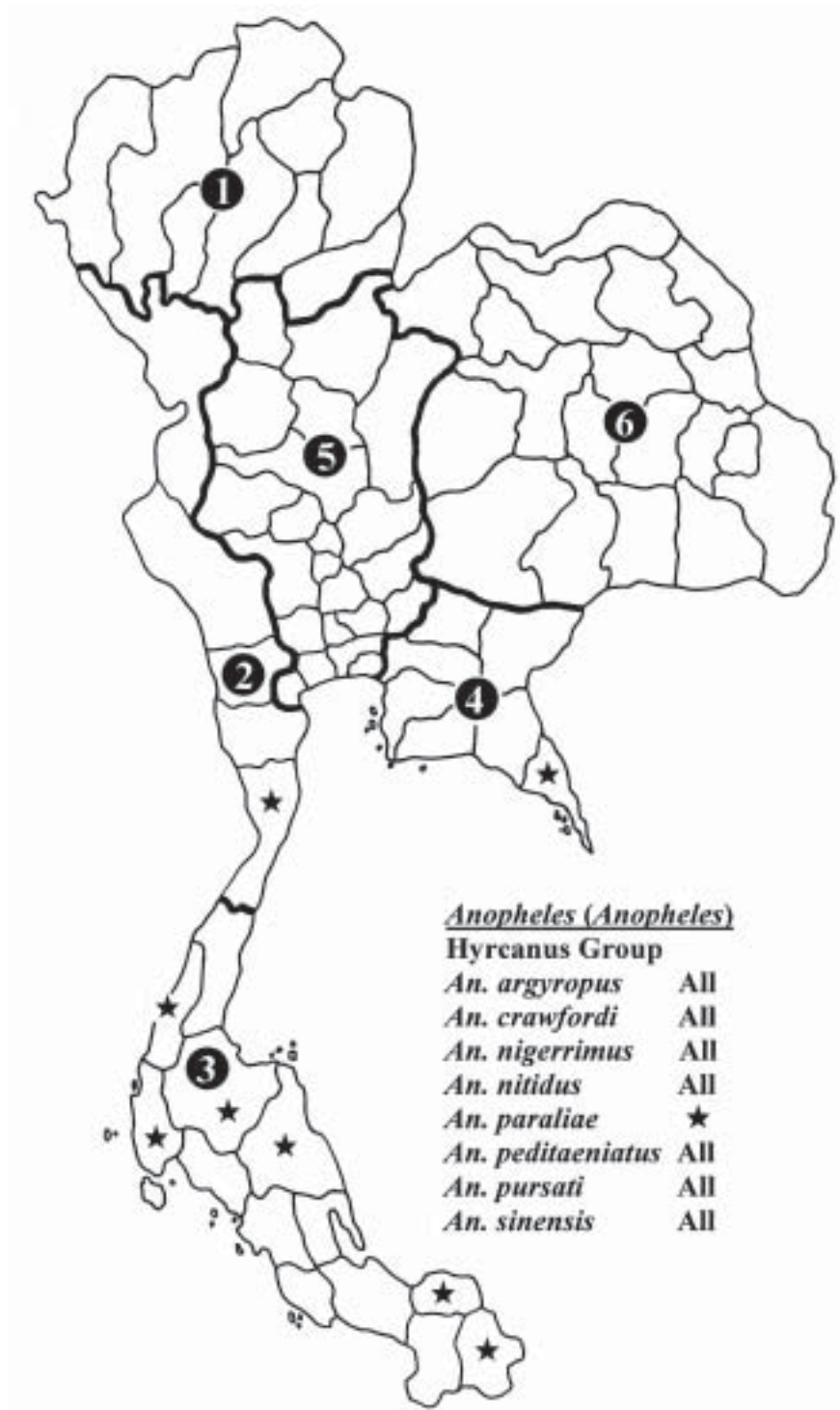


Fig 5–Distributions of Hyrcanus Group of *Anopheles* (*Anopheles*).

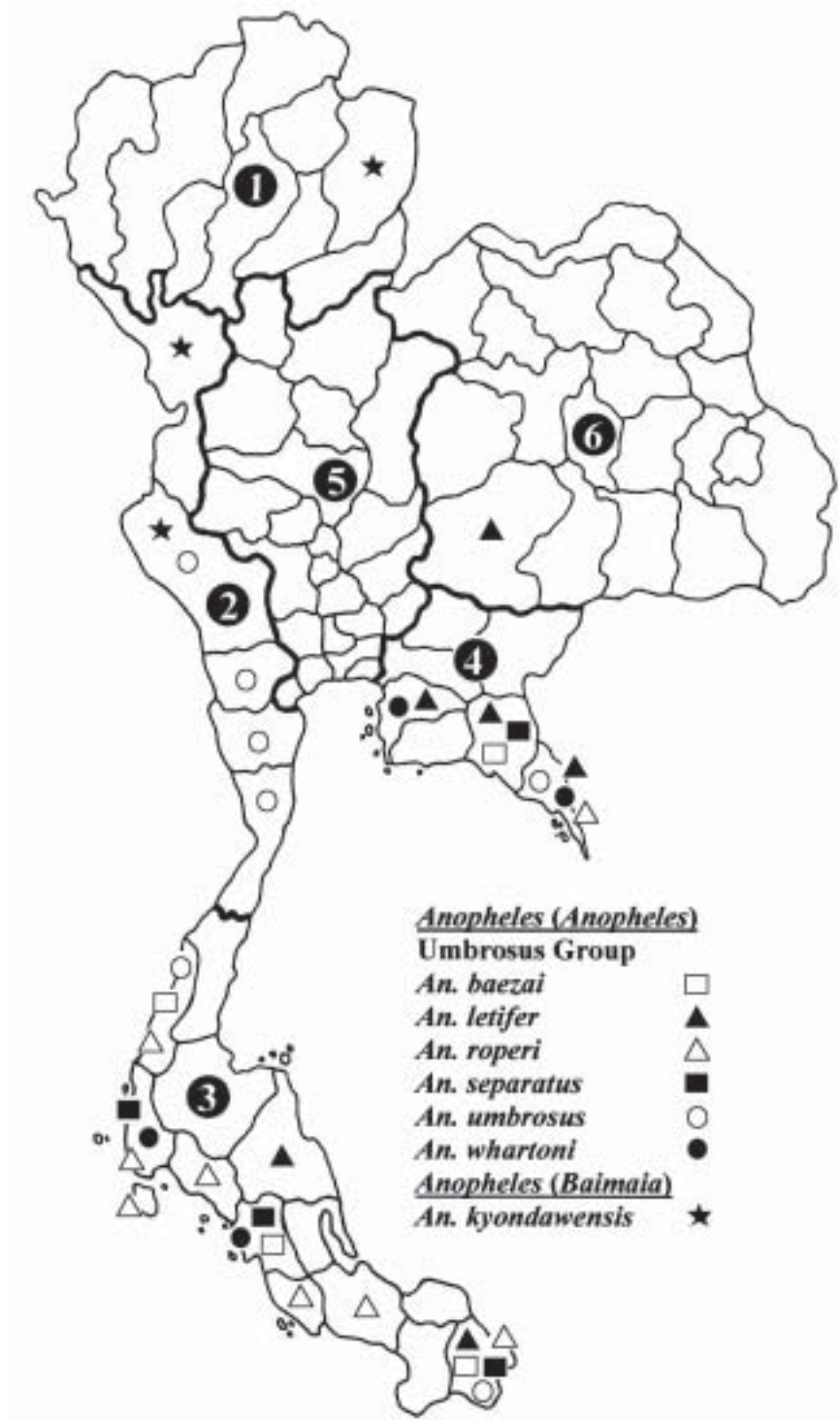


Fig 6—Distributions of Umbrosus Group of *Anopheles (Anopheles)* and *An. kyondawensis* of *Anopheles (Baimaia)*.



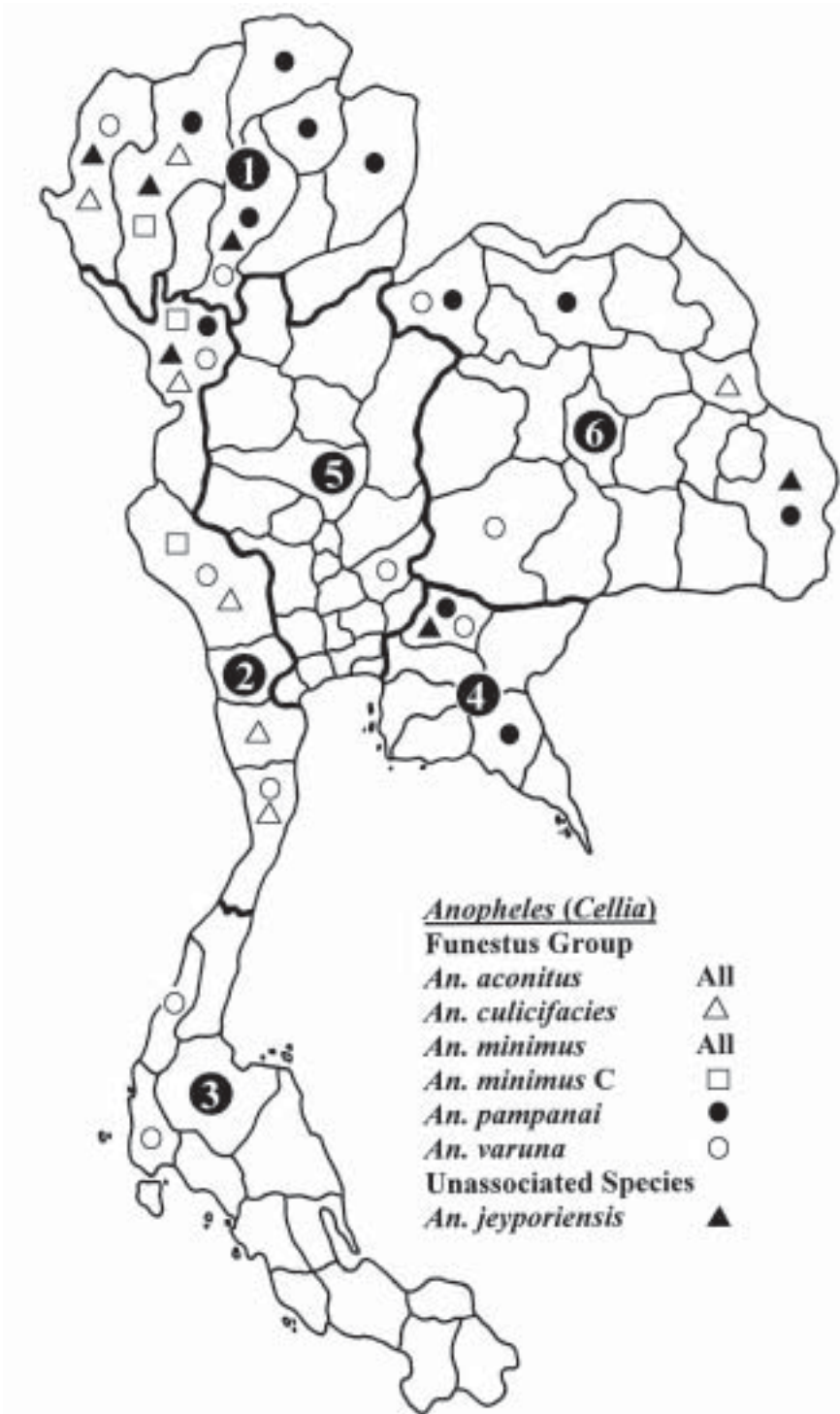


Fig 7—Distributions of Funestus Group and *An. jeyporiensis* of *Anopheles (Cellia)*.

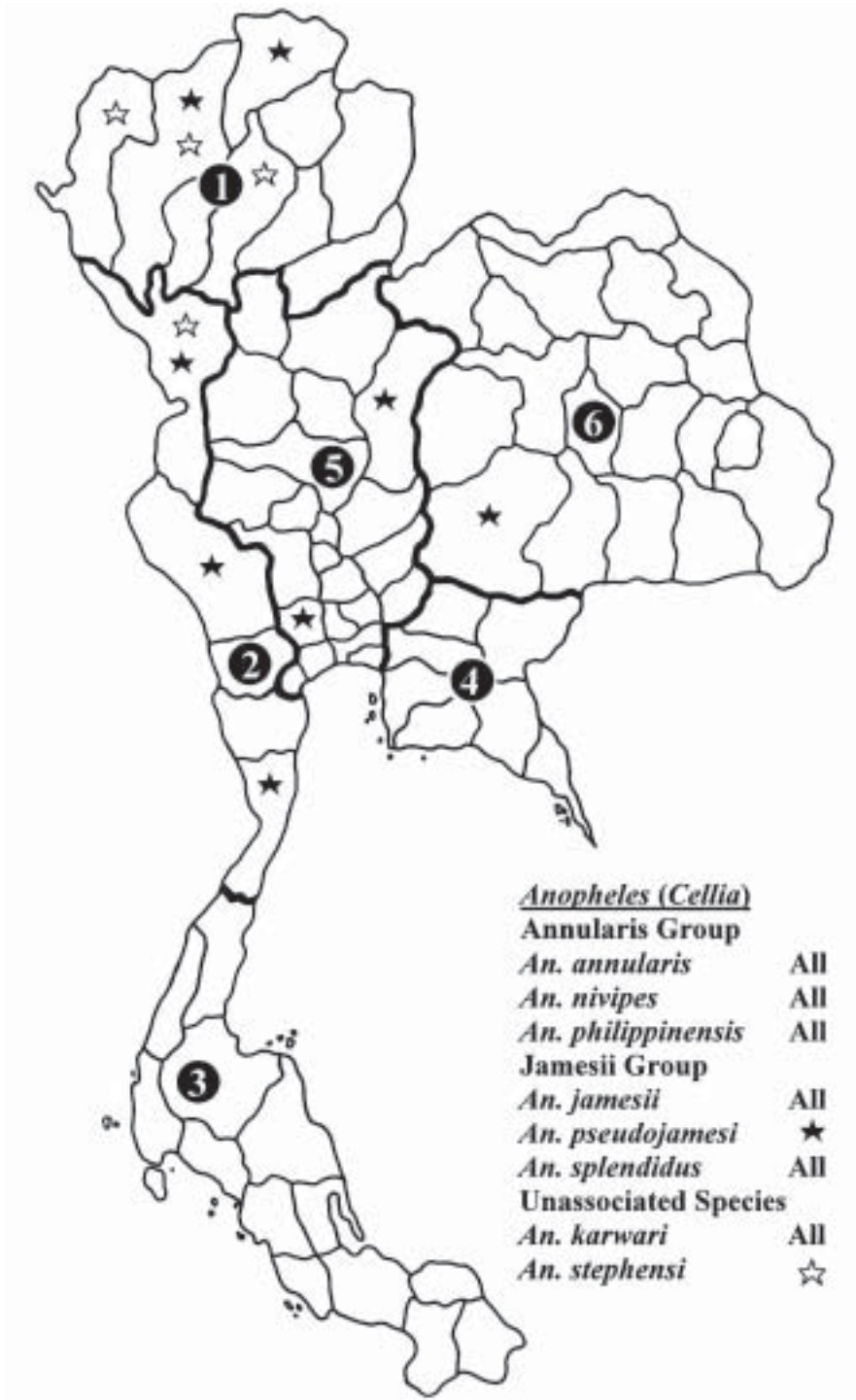
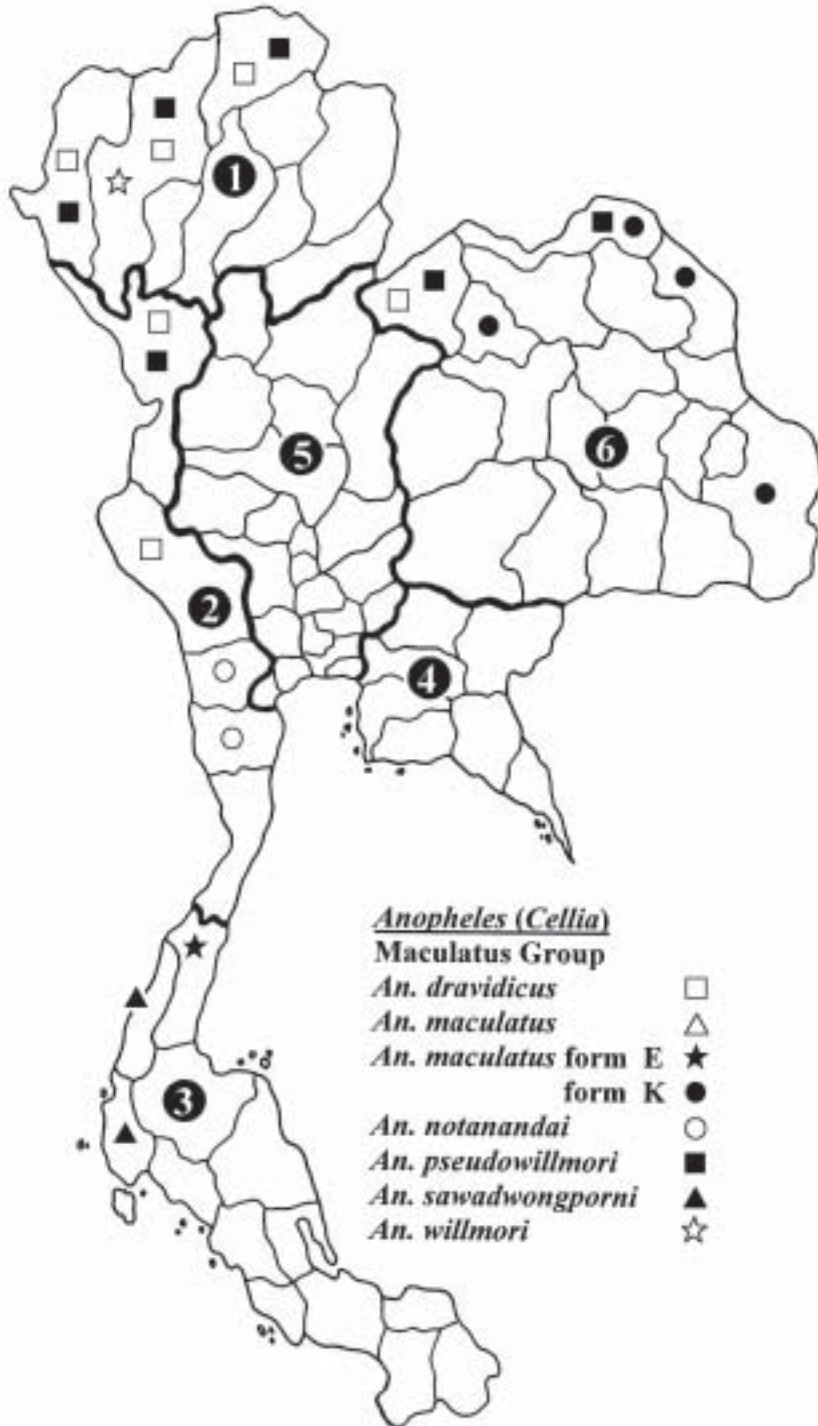


Fig 8—Distributions of Annularis and Jamesii Groups, *An. karwari* and *An. stephensi* of *Anopheles (Cellia)*.



- △ Distributed throughout the country except in the South.
- ★ Distributed only from Chumphon to the South.
- ▲ Distributed through most areas of the country, uncommon in the South.

Fig 9—Distributions of Maculatus Group of *Anopheles (Cellia)*.



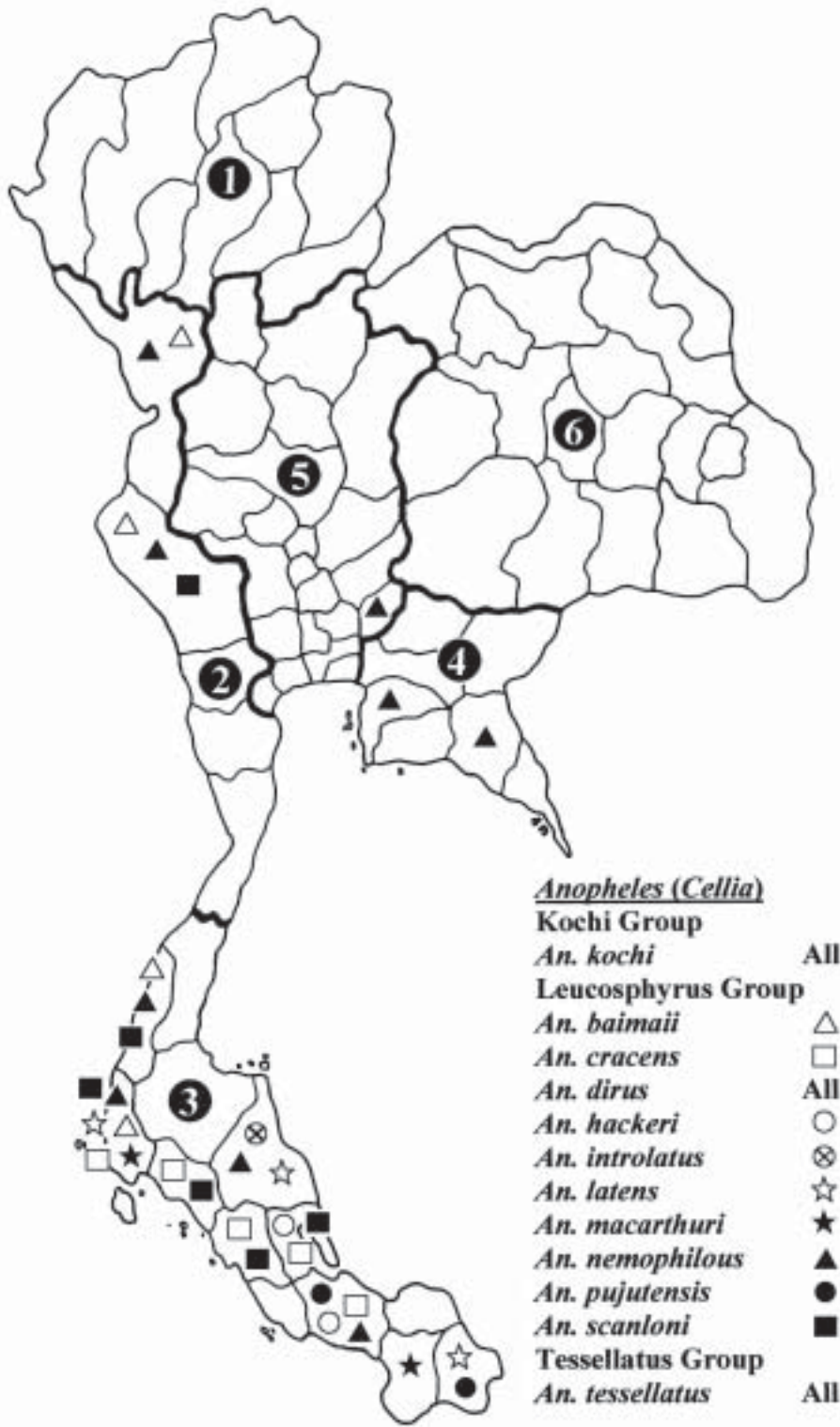


Fig 10—Distributions of Kochi, Leucosphyrus, and Tessellatus Groups of *Anopheles (Cellia)*.

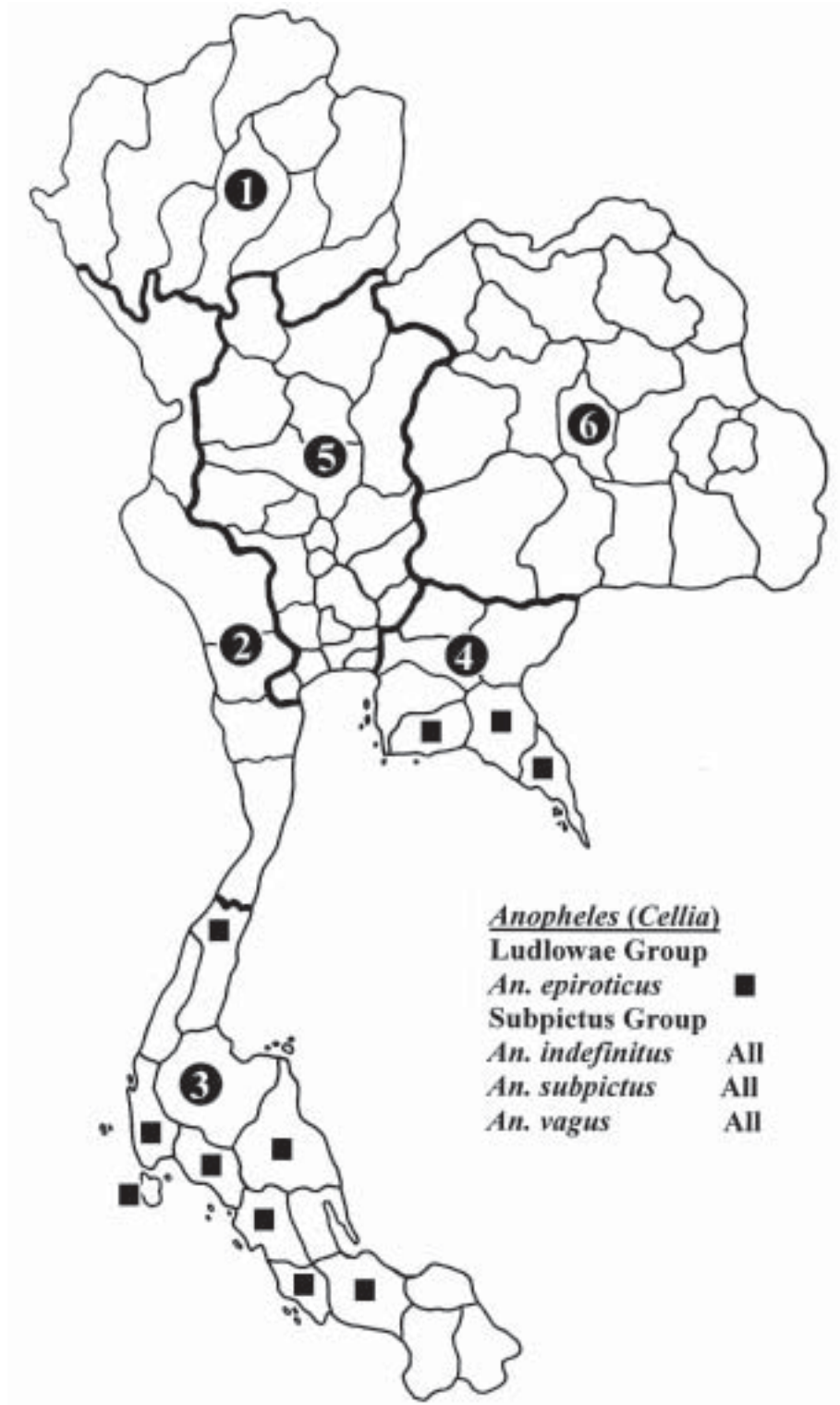


Fig 11—Distributions of Ludlowae and Subpictus Groups of *Anopheles (Cellia)*.