

ADULT MORPHOLOGY

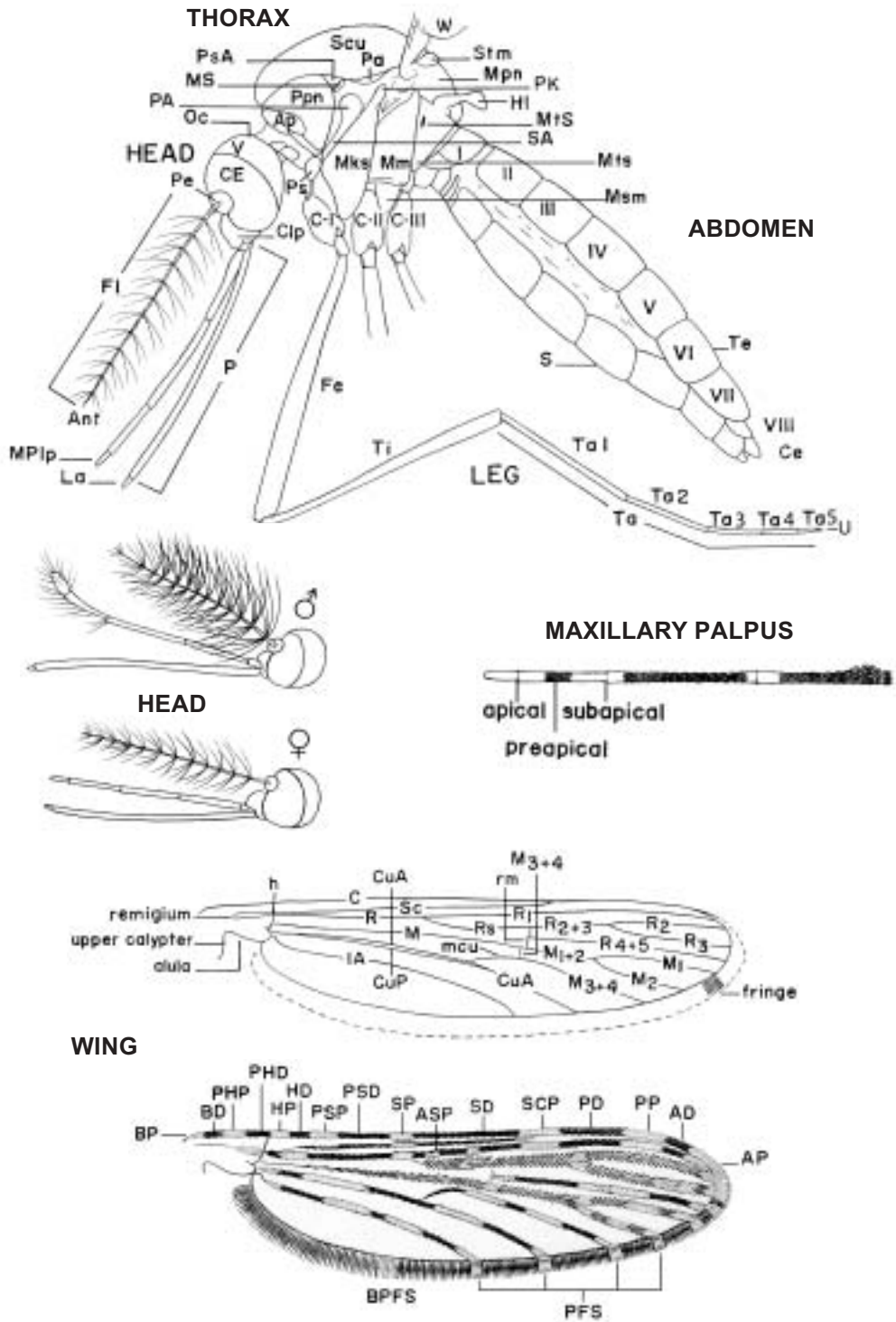


Fig 12

## ABBREVIATIONS ADULT

**HEAD**

Ant	=	antenna
CE	=	compound eye
Clp	=	clypeus
Fl	=	flagellum
La	=	labellum
MPIp	=	maxillary palpus
Oc	=	occiput
Pe	=	pedicel
P	=	proboscis
V	=	vertex

**THORAX**

Ap	=	antepronotum
HI	=	halter
Mks	=	mesokatepisternum
Mm	=	mesepimeron
Mpn	=	mesopostnotum
MS	=	mesothoracic spiracle
Msm	=	mesomeron
MtS	=	metathoracic spiracle
Mts	=	metepisternum
Pa	=	paratergite
PA	=	postspiracular area
PK	=	prealar knob
Ppn	=	postpronotum
Ps	=	proepisternum
PsA	=	prespiracular area
SA	=	subspiracular area
Scu	=	scutum
Stm	=	scutellum
W	=	wing

**LEG**

C-I	=	forecoxa
C-II	=	midcoxa
C-III	=	hindcoxa
Fe	=	femur
Ta 1-Ta 5	=	tarsomeres 1-5
Ti	=	tibia
U	=	unguis

**WING VEINS**

C	=	costa
CuA	=	cubitus anterior
CuP	=	cubitus posterior
h	=	humeral crossvein
M	=	media
M <sub>1</sub> , M <sub>2</sub> , M <sub>1+2</sub> , M <sub>3+4</sub>	=	branches of media
mcu	=	mediocubital crossvein
R	=	radius
R <sub>1</sub> , R <sub>2</sub> , R <sub>3</sub> , R <sub>2+3</sub> , R <sub>4+5</sub>	=	branches of radius
rm	=	radiomedial crossvein
Rs	=	radial sector
Sc	=	subcosta
1A	=	anal vein

**WING SPOTS**

AD	=	apical dark
AP	=	apical pale
ASP	=	accessory sector pale
BD	=	basal dark
BP	=	basal pale
BPFS	=	basal pale fringe spot
HD	=	humeral dark
HP	=	humeral pale
PD	=	preapical dark
PFS	=	pale fringe spot
PHD	=	prehumeral dark
PHP	=	prehumeral pale
PP	=	preapical pale
PSD	=	presector dark
PSP	=	presector pale
SCP	=	subcostal pale
SD	=	sector dark
SP	=	sector pale

**ABDOMEN**

Ce	=	cercus
Te	=	tergum
S	=	sternum
I-VIII	=	abdominal segments