

### LARVAL MORPHOLOGY

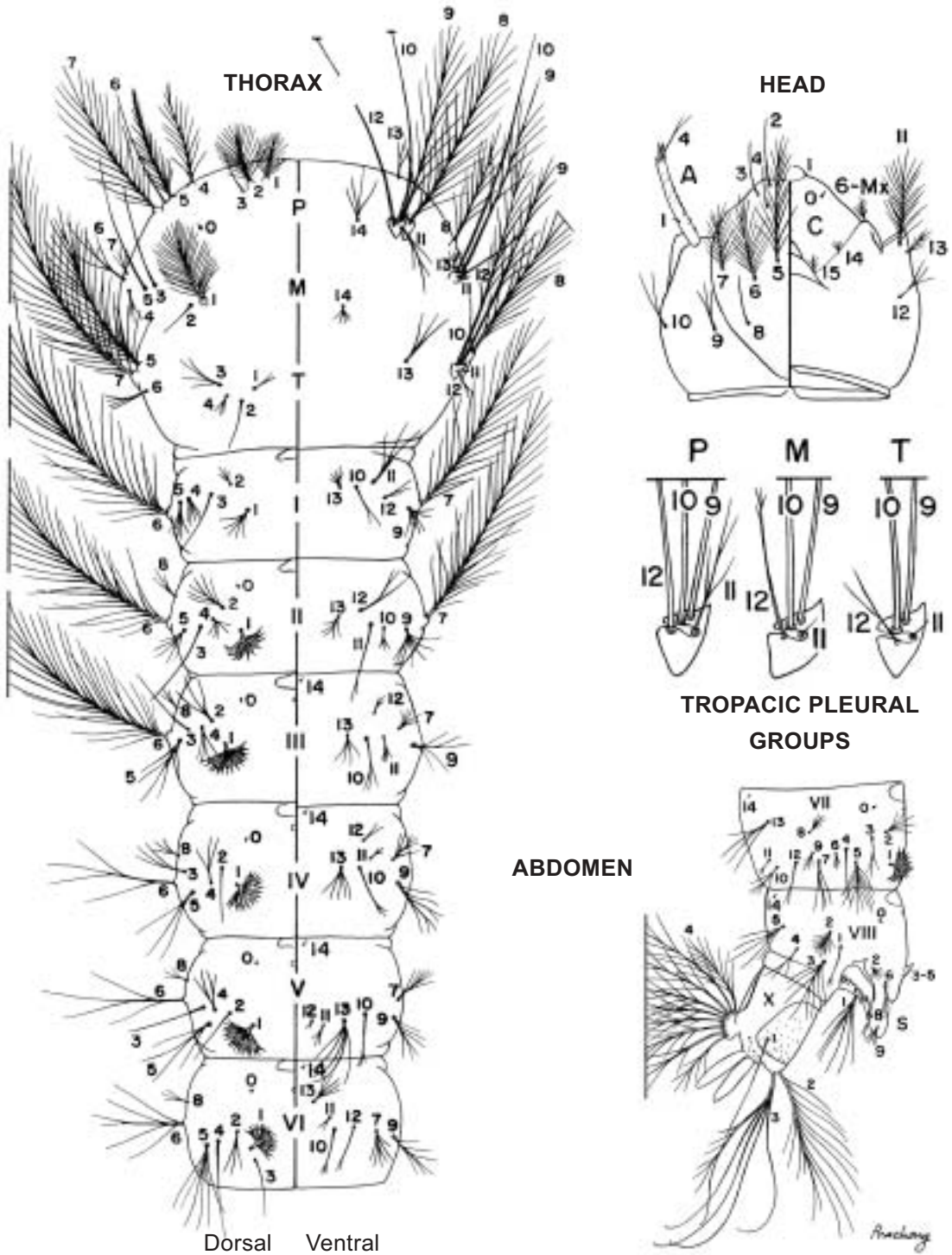


Fig 13

## ABBREVIATIONS LARVA

### HEAD

- A = antenna  
C = cranium head capsule

### THORAX

- P = prothorax  
M = mesothorax  
T = metathorax  
1-14 = setae on designated areas, *e.g.*,  
seta 1-M, seta 1-T

### ABDOMEN

- I-VIII, X = abdominal segments  
S = spiracular apparatus  
1-14 = setae on designated areas, *e.g.*,  
seta 1-I, seta 5-IV