

FOURTH-INSTAR CULICINE LARVA

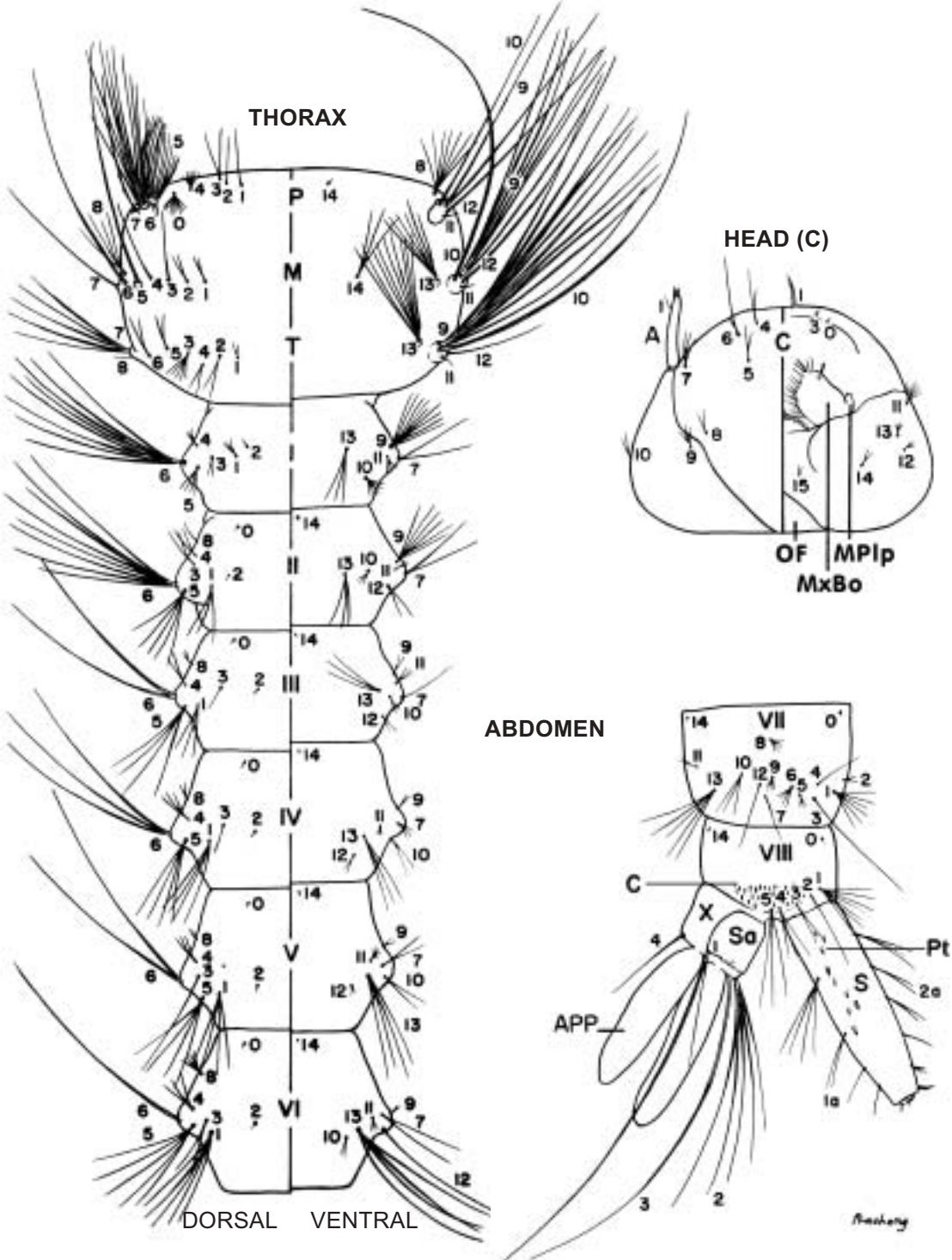


Fig 3—Fourth-instar Culicine larva.

ABBREVIATIONS
LARVA

HEAD

A	=	antenna
C	=	cranium head capsule
MPIp	=	maxillary palpus
MxBo	=	maxillary body
OF	=	occipital foramen
1-15	=	setae on designated areas, <i>e.g.</i> , seta 1-C

THORAX

P	=	prothorax
M	=	mesothorax
T	=	metathorax
1-14	=	setae on designated areas, <i>e.g.</i> , seta 1-M, seta 1-T

ABDOMEN

APP	=	anal papilla
C	=	comb
S	=	siphon
Pt	=	pecten
Sa	=	saddle
1a-S	=	ventral setae
2a-S	=	dorsal setae
1-VIII,X	=	abdominal segments <i>e.g.</i> , seta 1-I, seta 5-IV
1-14	=	setae on designated areas, <i>e.g.</i> , seta 1-S