

KEY TO THE SPECIES OF *ORTHOPODOMYIA*
ADULT FEMALES

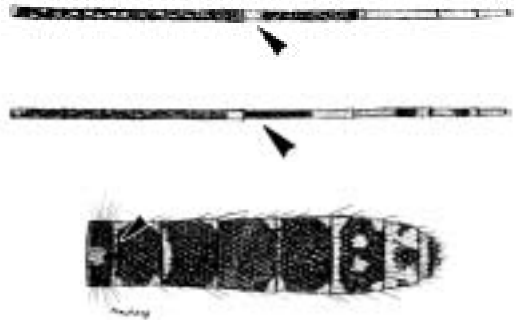
Characters: Tarsomere 1 of fore- and midlegs distinctly longer than tarsomeres 2-5 together; wing with distinct pale and dark spots

1. Hindtarsomere 2 with conspicuous subequal white basal and apical bands
2. Tergum II usually with distinct median patch of pale scales basally

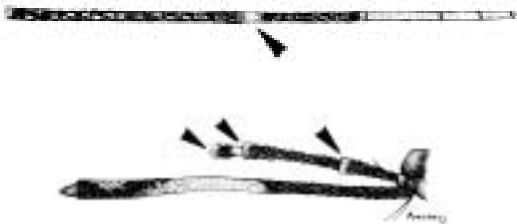


Or. wilsoni

1. Hindtarsomere 2 with conspicuous white basal band or largely dark at base
2. Tergum II without distinct median patch of pale scales basally



1. Hindtarsomere 2 with more extensive white scaling at base than apex
2. Maxillary palpus with 3 pale bands



Or. albipes

1. Hindtarsomere 2 with more extensive white scaling at apex than base
2. Maxillary palpus with 2 pale bands



↳ To PLATE 2

PLATE 2

From PLATE 1: Hindtarsomere 2 with more extensive white scaling at apex than base;
maxillary palpus with 2 pale bands

Hindtarsomere 4 with median dark spot or Hindtarsomere 4 entirely white-scaled
band



Or. anopheloides
(in part)

Or. siamensis, *Or. andamanensis*,
and *Or. anopheloides* (in part)