

KEY TO THE SPECIES OF GENERA *KIMIA* AND *TOPOMYIA*
ADULTS

Characters: Scutum with conspicuous median longitudinal line of broad silver, white, or metallic blue scales; proboscis usually slender, if slightly swollen then not upturned and setose

- | | |
|-------------------------------------------------------------------------------------------------------------------|------------------------------------------------------------------------------------------------------|
| <p>Foretarsomere 2 slightly shorter than foretarsomere 3, occasionally with foretarsomeres 3-5 bent backwards</p> | <p>Foretarsomere 2 as long or longer than foretarsomere 3, foretarsomeres 3-5 not bent backwards</p> |
|-------------------------------------------------------------------------------------------------------------------|------------------------------------------------------------------------------------------------------|



Subgenus *Topomyia* of genus *Topomyia*^a

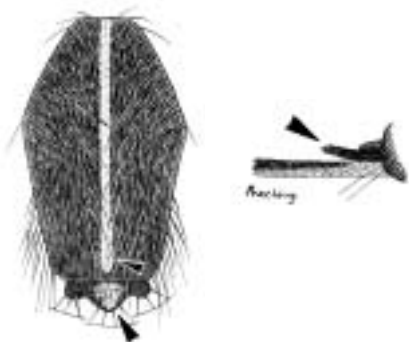


Genus *Kimia*
and subgenus *Suaymyia* of genus *Topomyia*

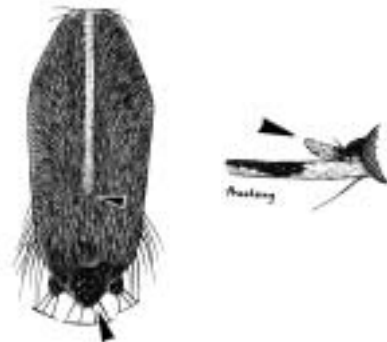
↳ To PLATE 2 (Above)

1. Scutum with median longitudinal line of silvery scales reaching or continuing onto scutellum
2. Midlobe of scutellum with patch of silvery scales
3. Maxillary palpus dark

1. Scutum with median longitudinal line of silvery scales not reaching scutellum, ending approximately at level of wing root
2. Midlobe of scutellum without patch of silvery scales
3. Maxillary palpus otherwise



To. vijayae, *To. gracilis*, and *To. tenuis*

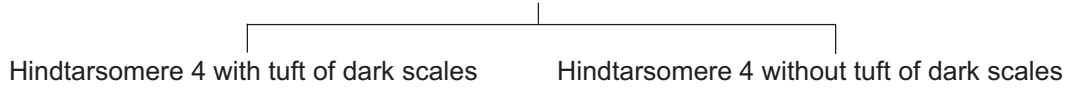


^a *Topomyia bifurcata* is not included.

↳ To PLATE 2 (Below)

PLATE 2

From PLATE 1: Foretarsomere 2 as long or longer than foretarsomere 3, foretarsomeres 3-5 not bent backwards

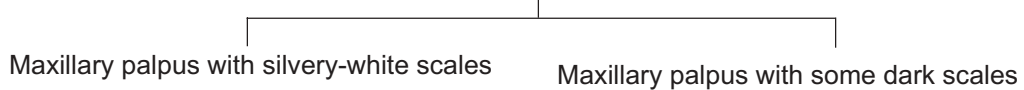


To. apsarae^a and *To. cristata*^b



Km. suchariti^a and *To. houghton*^b,
To. leucotarsis^b, *To. pseudoleucotarsis*^b,
To. spathulirostris^a, and *To. yanbarensis*^a

From PLATE 1. Scutum with median longitudinal line of silvery scales not reaching scutellum, ending approximately at level of wing root; midlobe of scutellum without patch of silvery scales; maxillary palpus otherwise



To. aenea, *To. angkoris*,
To. argyropalpis, and *To. lindsayi*



To. inclinata, *To. svastii*,
To. tipuliformis, and *To. unispinosa*

^a Midlobe of scutellum with patch of silvery scales.

^b Midlobe of scutellum with dark scales.