

KEY TO THE SPECIES OF *TOXORHYNCHITES*
ADULTS

Characters: Apical half of proboscis attenuated and sharply curved ventrally; wing with posterior edge emarginate just beyond tip of vein CuA; large to very large, brightly colored mosquitoes

Abdominal terga VI-VIII without lateral tufts of scales

Abdominal terga VI-VIII with lateral tufts of scales



↳ To PLATE 2 (Above)

1. Mid- and hindtarsomeres 5 white or pale at apex^a
2. Male: hindtarsomere 1 with ventral fringe of hairlike scales
3. Abdominal terga V-VII with broad basal pale bands

1. Mid- and hindtarsomeres 5 dark at apex^a
2. Male: hindtarsomere 1 without ventral fringe of hairlike scales
3. Abdominal terga V-VII with narrow, incomplete basal pale bands



Tx. leicesteria

^aFemale only.

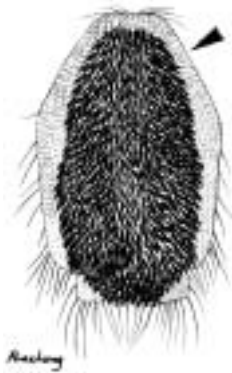
↳ To PLATE 2 (Below)

PLATE 2

From PLATE 1: Abdominal terga VI-VIII with lateral tufts of scales

Scutum with conspicuous border of white or pale golden scales, usually extending around margin

Scutum without conspicuous border of pale scales



↳ To PLATE 3

↳ To PLATE 5

From PLATE 1: Mid- and hindtarsomeres 5 dark at apex; male: hindtarsomere 1 without ventral fringe of hairlike scales; abdominal terga V-VII with narrow, incomplete basal pale bands

Fore- and midtarsomeres 2-4 entirely dark^a

Fore- and midtarsomeres 2-4 with pale scaling^b



Tx. species 1
(near *Tx. gravelyi*)

Tx. gravelyi

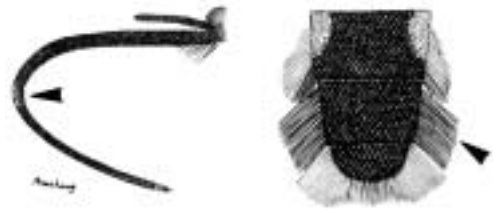
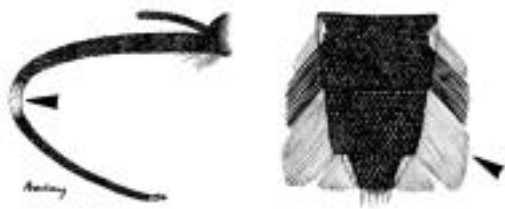
^a Both male and female.

^b Female only.

From PLATE 2: Scutum with conspicuous border of white or pale golden scales, usually extending around margin

1. Proboscis with distinct median pale band
2. Lateral tufts on tergum VII with orange scales

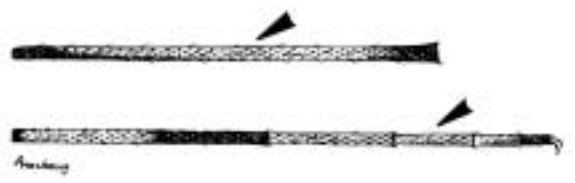
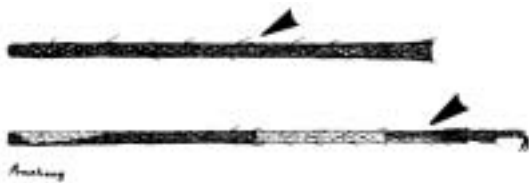
1. Proboscis dark or with dorsomedian pale spot
2. Lateral tufts on tergum VII with black scales



Tx. sunthorni

1. Scutum with distinct border of blue reflective scales extending over wing root
2. Midtibia without broad median pale band
3. Midtarsomere 3 not entirely pale-scaled

1. Scutum with indistinct border of blue reflective scales extending over wing root
2. Midtibia with large median patch or band of pale scales
3. Midtarsomere 3, and occasionally 4, pale-scaled



Tx. species 2
(near *Tx. manopi*)

➔ To PLATE 4

PLATE 4

From PLATE 3: Scutum with indistinct border of blue reflective scales extending over wing root; midtibia with large median patch or band of pale scales; midtarsomere 3, and occasionally 4, pale-scaled

1. Midtibia with large median patch of pale scales forming nearly complete band^a
2. Caudolateral tufts on tergum VIII with cream-colored scales

1. Midtibia with median patch of pale scales on posterior surface^a
2. Caudolateral tufts on tergum VIII with yellowish scales^b



Tx. manopi^c



Tx. bickleyi^d

^a Occasionally with pale scales weakly developed.

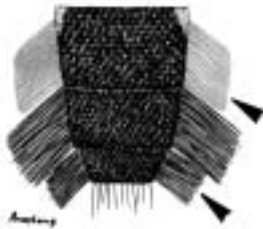
^b Males only.

^c Proboscis without dorsomedian pale spot (Thurman, 1959).

^d Proboscis with dorsomedian pale spot (Thurman, 1959).

From PLATE 2: Scutum without conspicuous border of pale scales

1. Scutum with bright metallic reflections
2. Lateral scales on tergum VI entirely whitish to yellow
3. Tergum VIII with dark lateral scales



1. Scutum with dull bronzy, grayish reflections, occasionally bluish laterally and along anterior border
2. Lateral scales on tegum VI pale anteriorly and black posteriorly
3. Tergum VIII with yellow lateral scales^a



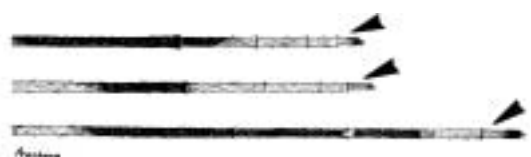
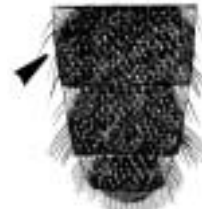
Tx. splendens and
Tx. amboinensis^a

1. Scutal scales with bright metallic green or blue reflections
2. Terga VI-VIII with well-developed lateral scale tufts
3. Tarsomere 5 of all legs entirely dark-scaled



Tx. magnificus and
Tx. species 3 near *Tx. magnificus*

1. Scutal scales with bright metallic green to dark reddish reflections
2. Terga VI-VIII with weakly developed lateral scale tufts
3. Tarsomere 5 of all legs with pale and dark scaling



Tx. albipes

^a The male of *Tx. amboinensis* has black lateral scales on tegum VIII.