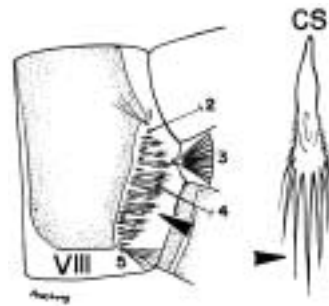
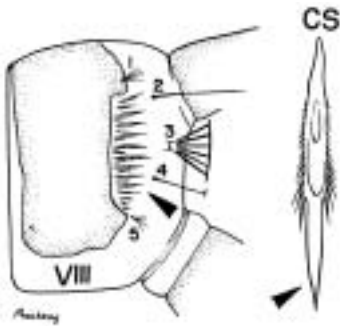


KEY TO THE SPECIES OF *ORTHOPODOMYIA*
FOURTH-INSTAR LARVAE

Characters: Ventral brush (seta 4-X) with 4 or more pairs of setae; siphon without pecten, seta 1-S represented by single pair of setae; seta 1-A large, with 4 or more branches; abdominal segments VII and VIII and sometimes VI with large sclerotized plates

Posterior (long) comb scales narrow at apex, with single elongate spine

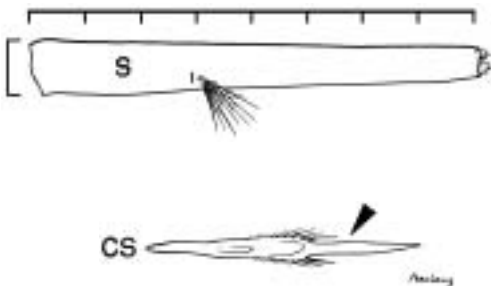
Posterior (long) comb scales expanded at apex, with 5 or more elongate spines



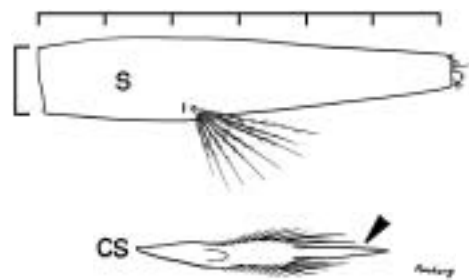
↳ To PLATE 2

1. Siphon long and narrow, length 7 or more times width at base
2. Posterior comb scales with strong median apical spine much longer than lateral spines

1. Siphon broader, less than 7 times width at base
2. Posterior comb scales with median spine not much longer than lateral spines



Or. wilsoni

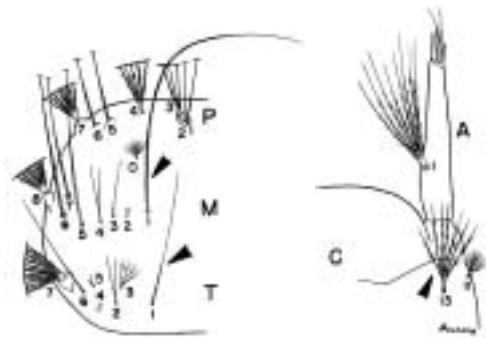
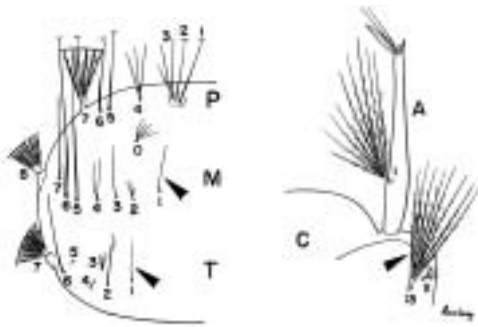


Or. albipes

From PLATE 1: Posterior (long) comb scales expanded at apex, with 5 or more elongate spines

1. Setae 1-M and 1-T short, subequal in length to setae 3-M and 2-T, respectively
2. Seta 13-C reaching beyond base of seta 1-A

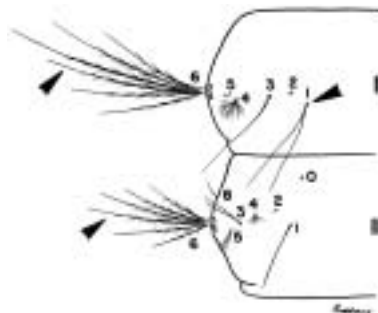
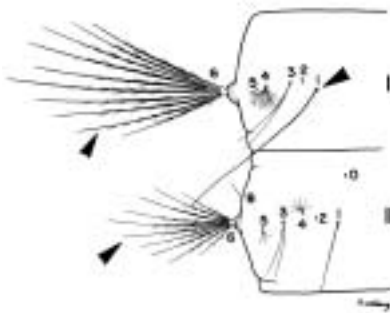
1. Setae 1-M and 1-T long, much longer than seta 3-M and 2-T, respectively
2. Seta 13-C short, not reaching base of seta 1-A



Or. siamensis

1. Seta 6-I usually with 9-10 branches
2. Seta 6-II usually with 9-11 branches
3. Seta 1-I longer than segment

1. Seta 6-I usually with 5-8 branches
2. Seta 6-II usually with 4-8 branches
3. Seta 1-I not longer than segment



Or. andamanensis

Or. anopheloides