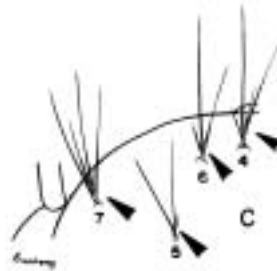
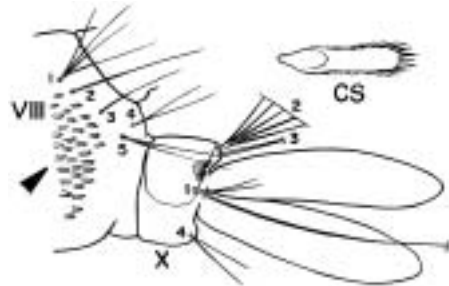
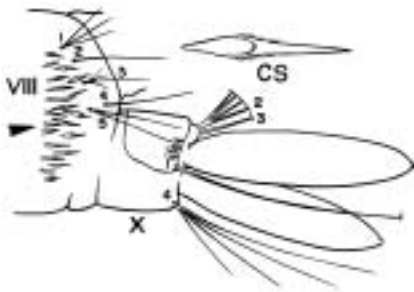


KEY TO THE SPECIES OF *MALAYA*  
FOURTH-INSTAR LARVAE

Characters: Ventral brush (seta 4-X) with 1 or 2 pairs of setae; seta 1-S represented by 2 or more pairs of setae; setae 5- and 6-P with branches; setae 6-M and 7-T never stout or spinelike; thorax and abdomen with or without stellate setae; comb scales usually in 2 or more rows; maxillary palpus inconspicuous; abdominal segments IV-VI without stellate setae; seta 5-P less than 0.5 length of seta 6-P, branches pectinate or bipectinate

1. Comb scales pointed apically, in 2 rows
2. Setae 4-6-C single, 7-C single or double

1. Comb scales rounded apically, in 3 or more rows
2. Setae 4-6-C double or triple, 7-C usually with 3 or more branches



*Ml. jacobsoni*

*Ml. genurostris*