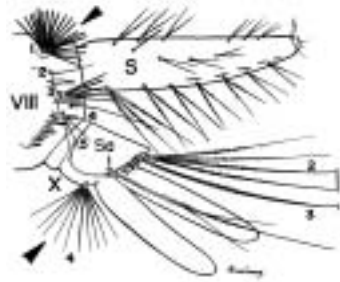
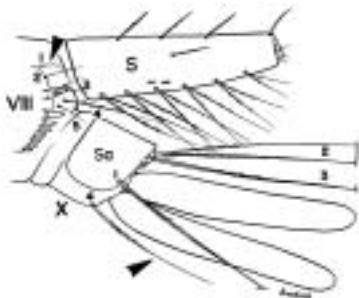
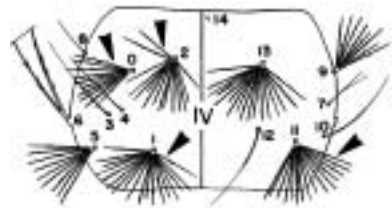
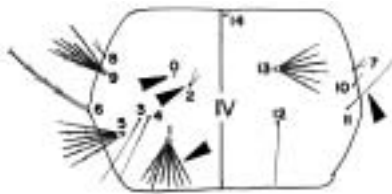
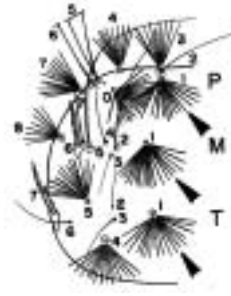
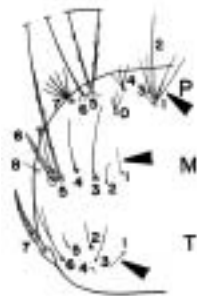


KEY TO THE SPECIES OF *TRIPTEROIDES*
FOURTH-INSTAR LARVAE AND PUPAE

Characters: Ventral brush (seta 4-X) with 1 or 2 pairs of setae; seta 1-S represented by 2 or more pairs of setae; seta 5- and/or 6-P usually single; setae 6-M and/or 7-T often stout or spinelike; thorax and abdomen covered with long stellate setae; comb scales usually in a single row

- | | |
|---|--|
| <ol style="list-style-type: none"> 1. Seta 1-P,M,T small, single or with few branches 2. Seta 1-IV-VII not stellate, with few branches, I-VIII minute with 8 or fewer branches 3. Setae 0,2,11-IV-VII not stellate 4. Seta 4-X long, single or double, length 2 or more times width of saddle | <ol style="list-style-type: none"> 1. Seta 1-P,M,T large, stellate, with 6 or more branches 2. Seta 1-IV-VIII stellate, highly branched 3. Setae 0,2,11-IV-VII stellate 4. Seta 4-X branched, short, as long as saddle |
|---|--|



Tr. species 1

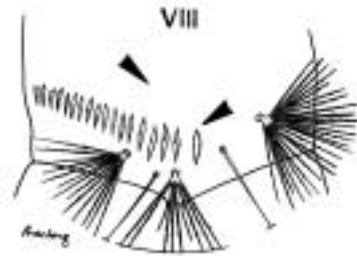
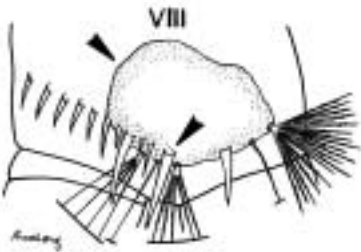
↳ To PLATE 2

PLATE 2

From PLATE 1: Seta 1-P,M,T large, stellate, with 6 or more branches; seta 1-IV-VIII stellate, highly branched; setae 0,2,11-IV-VII stellate; seta 4-X branched, short, as long as saddle

Comb scales arising from sclerotized plate

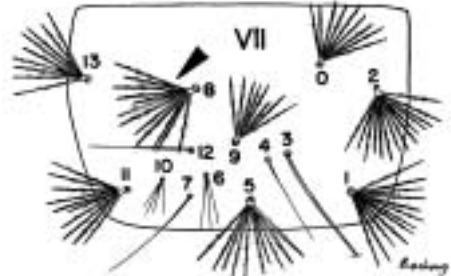
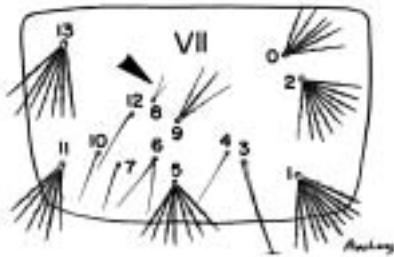
Comb scales not arising from sclerotized plate



↳ To PLATE 5

Seta 8-VII minute, delicate

Seta 8-VII large, stellate



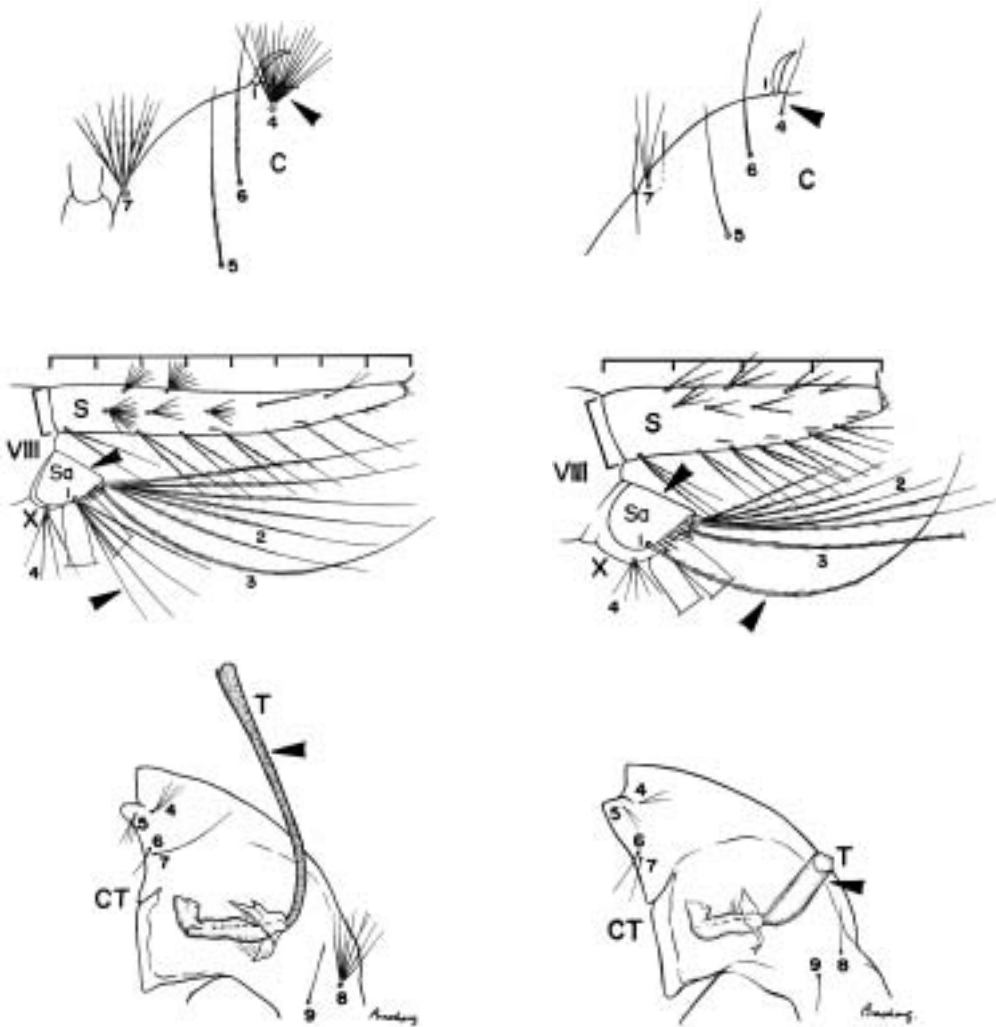
Tp. (Rah.) tenax

↳ To PLATE 3

From PLATE 2: Seta 8-VII large, stellate

1. Seta 4-C branched
2. Siphon long, 6 or more times width at base
3. Seta 1-X branched, equal to or less than 3 times length of saddle
4. Pupal cephalothorax (CT): trumpet (T) long and narrow, 25-40 times longer than wide

1. Seta 4-C single or double
2. Siphon short, less than 6 times width at base
3. Seta 1-X single, 4 or more times length of saddle
4. Pupal cephalothorax (CT): trumpet (T) short, less than 10 times longer than wide



Tp. (Trp.) caeruleocephalus

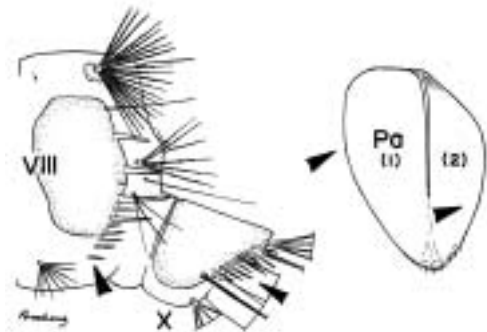
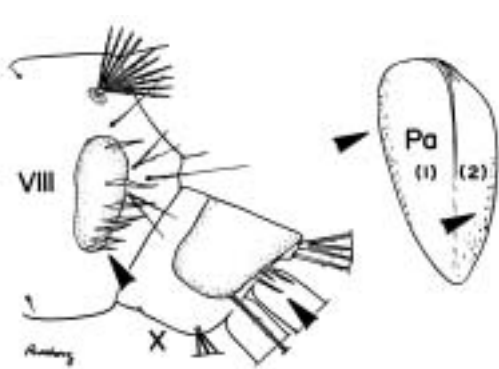
➤ To PLATE 4

PLATE 4

From PLATE 3: Seta 4-C single or double; siphon short, less than 6 times width at base; seta 1-X single, 4 or more times length of saddle; pupal cephalothorax (CT): trumpet (T) short, less than 10 times longer than wide

- 1. Comb with 6 or fewer scales borne on sclerotized plate
- 2. Margin of saddle with fewer than 7 spines
- 3. Pupa: outer (1) and inner (2) margins of paddle (Pa) with fine spicules

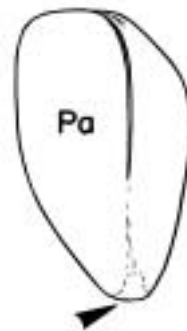
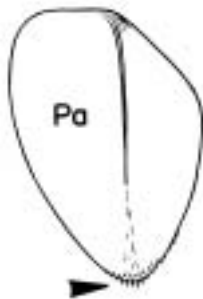
- 1. Comb with more than 6 scales, usually not entirely borne on sclerotized plate
- 2. Margin of saddle usually with more than 7 spines
- 3. Pupa: outer (1) and inner (2) margins of paddle (Pa) without spicules, spicules only present at apex



Tp. (Trp.) similis

Pupa: apex of paddle with spicules

Pupa: apex of paddle without spicules



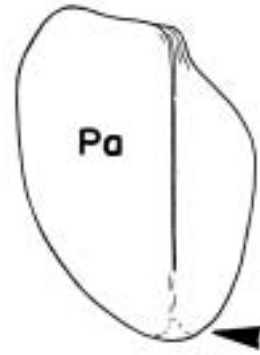
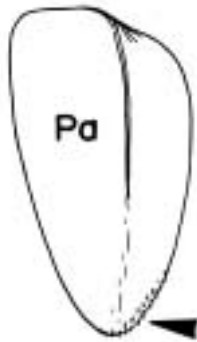
Tp. (Rah.) aranoides

Tp. (Rah.) aranoides species 2

From PLATE 2: Comb scales not arising from sclerotized plate

Pupa: apex of paddle with spicules

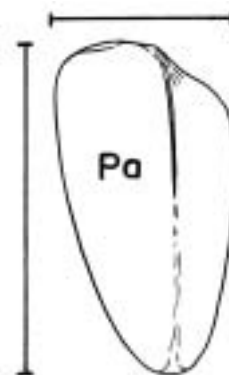
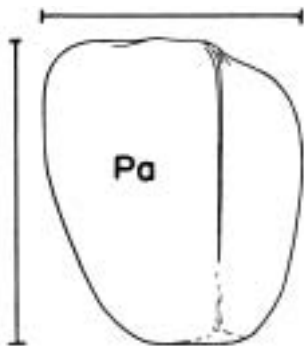
Pupa: apex of paddle without spicules



Tp. (Trp.) tarsalis

Pupa: paddle short, as long or slightly longer than width

Pupa: paddle distinctly longer than broad



Tp. (Trp.) aeneus, *Tp. (Trp.) proximus* (in part) and *Tp. (Trp.) powelli* (in part)

Tp. (Rah.) affinis, *Tp. (Trp.) denticulatus*,
Tp. (Trp.) hybridus, *Tp. (Trp.) indicus*,
Tp. (Trp.) proximus (in part),
and *Tp. (Trp.) powelli* (in part)