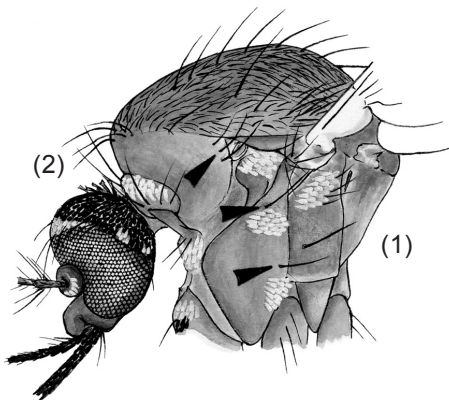


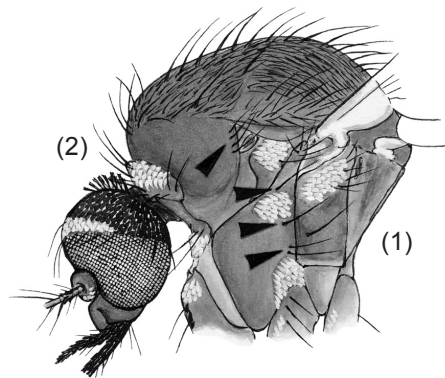
**KEY TO THE SPECIES OF GENUS *BOTHAELLA*
ADULT FEMALES**

From PLATE 17: Vertex with dorsomedian triangular patch of broad silvery scales; postpronotal scales absent; lower anterior mesepimeral seta present; midlobe of scutellum with broad silvery scales basally and broad dark scales apically

- | | |
|--|---|
| <p>1. Mesokatepisternum with 2 setae
2. Postpronotum with 2 or 3 posterior setae</p> | <p>1. Mesokatepisternum with 3 or more setae
2. Postpronotum with 3–5 posterior setae</p> |
|--|---|



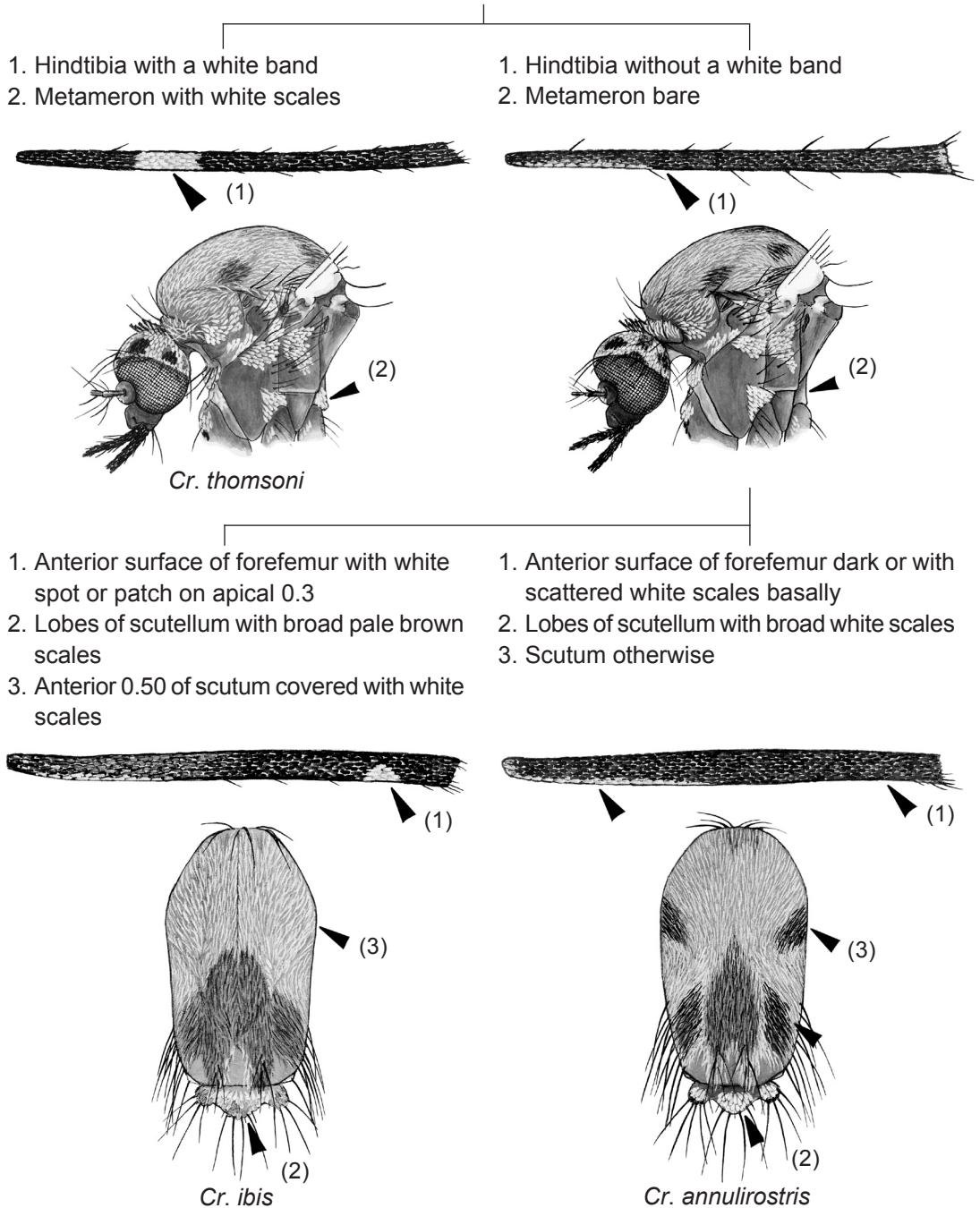
Bo. eldridgei



Bo. helenae

**KEY TO THE SPECIES OF GENUS *CHRISTOPHERSIOMYIA*
ADULT FEMALES**

From PLATE 19: Lower anterior mesepimeral seta present; scutum with covering of white scales anteriorly; posterior acrostichal area without stripe of pale scales; scutellum with broad white scales on all lobes; paratergite with scales

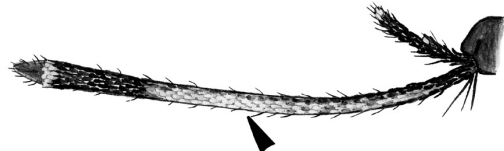
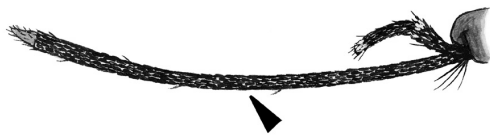


**KEY TO THE SUBGENERA AND SPECIES OF GENUS COLLESSIUS
ADULT FEMALES**

From PLATE 14: Lower anterior mesepimeral seta absent; midfemur with complete or incomplete narrow stripe of yellowish scales on anterior surface

Proboscis entirely dark

Proboscis pale ventrally



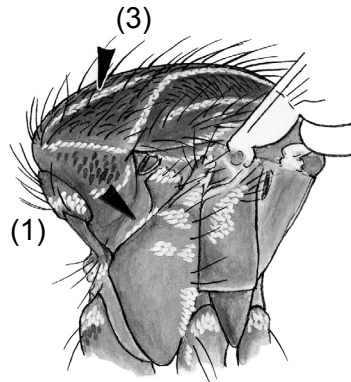
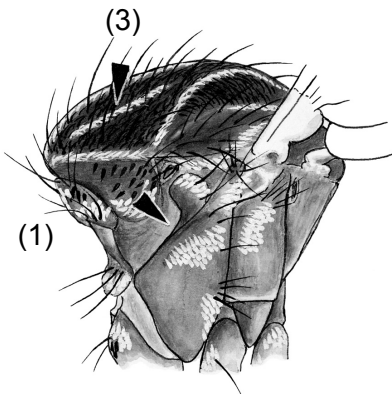
Subgenus *Alloeomyia* (*Alo.*)

Subgenus *Collessius* (*Col.*)

└─▶ To PLATE 44

1. Subspiracular area without scales
2. Hindtarsomere 5 entirely dark
3. Scutum with lines of white or creamy scales strongly contrasting with dark scaling

1. Subspiracular area with scales
2. Hindtarsomere 5 not entirely dark
3. Scutum with lines of white or creamy scales not strongly contrasting with dark scaling



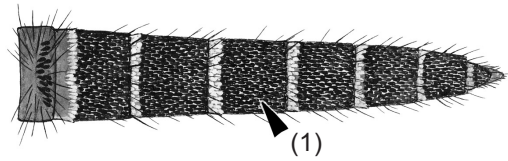
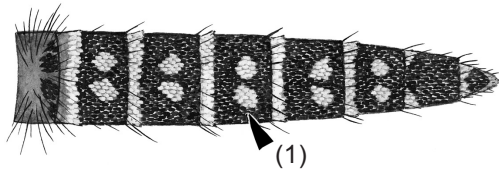
Co. (Alo.) pseudotaeniatus

Co. (Alo.) species 1

From PLATE 43: Proboscis pale ventrally

- 1. Abdominal terga II–VI with pair of pale spots
- 2. Hindtarsomere 5 entirely pale

- 1. Abdominal terga II–VI without pair of pale spots
- 2. Hindtarsomere 5 partly or completely dark



Co. (Col.) macfarlanei

- 1. Hindtarsomere 5 entirely dark
- 2. Proboscis with ventral apical pale spot before labella

- 1. Hindtarsomere 5 not entirely dark
- 2. Proboscis without ventral apical pale spot



Co. (Col.) elsiae and *Co. (Col.) shortti*^a

Co. (Col.) species 2

^a*Collessius (Col.) shortti* lacks or has a very faint apical pale spot on the proboscis.