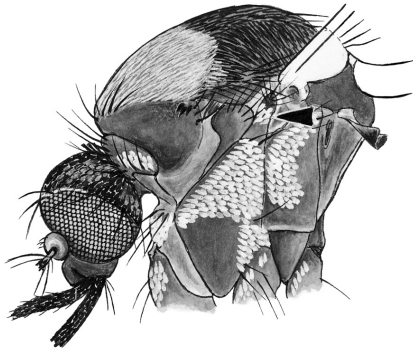


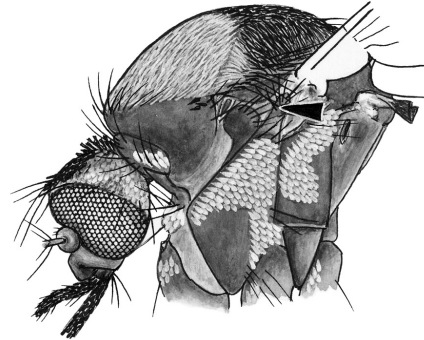
**KEY TO THE SPECIES OF GENUS *DOWNSIOMYIA*
ADULT FEMALES^a**

From PLATE 21: Postspiracular area without scales; dorsocentral setae absent; subspiracular scales absent

Prealar scales present

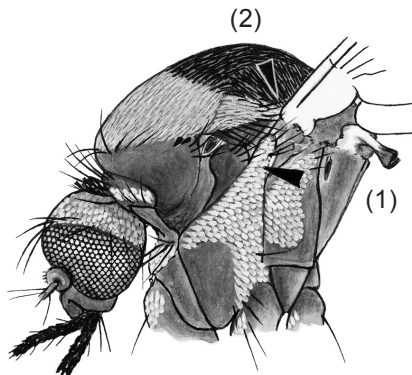


Prealar scales absent



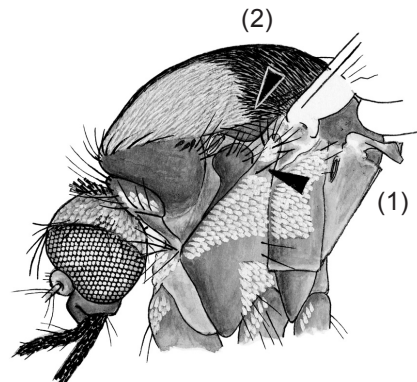
↳ To PLATE 48 (Above)

1. Prealar scales continuous with upper mesokatepisternal scales
2. Pale scaling of scutum extends posteriorly to wing root along lateral margin



Do. species 1

1. Prealar and upper mesokatepisternal scales separated by a gap
2. Pale scaling of scutum extends to scutal angle or point above paratergite, not reaching wing root



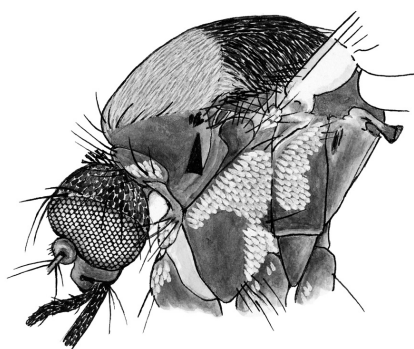
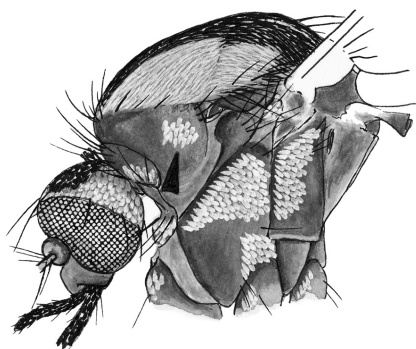
↳ To PLATE 46

^aThe females of *Do. albonivea*, *Do. pseudonivea*, *Do. saperoi*, and *Do. subnivea* are known but not included in the key due to the unavailability of specimens for study.

From PLATE 45: Prealar and upper mesokatepisternal scales separated by a gap; pale scaling of scutum extends to scutal angle or point above paratergite, not reaching wing root

Postpronotum with patch of broad white scales

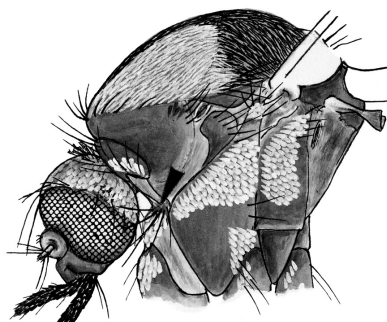
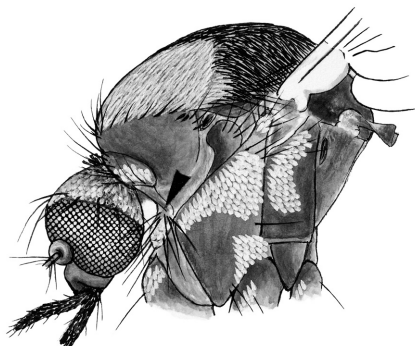
Postpronotum with broad dark scales dorso-posteriorly, occasionally with 1 or 2 broad white scales on this area



Do. nipponica

Upper proepisternum with 10 or more setae^a

Upper proepisternum with fewer than 10 setae



Do. leonis

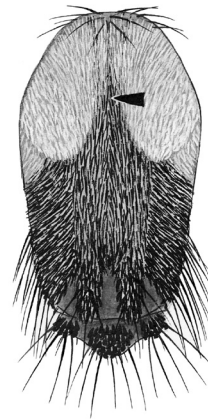
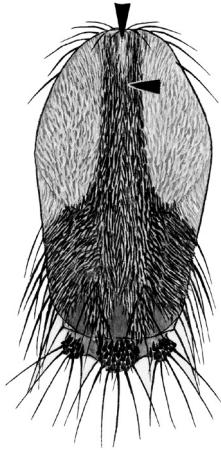
↳ To PLATE 47

^aThe setae cannot be seen from the front.

From PLATE 46: Upper proepisternum with fewer than 10 setae

Anterior pale scaling of scutum entirely divided by median stripe of dark scales or with few scattered pale scales anteriorly

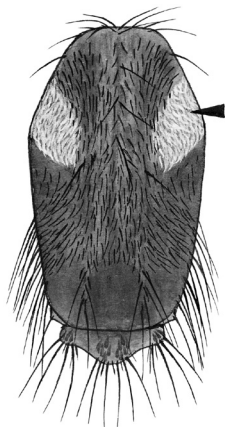
Anterior pale scaling of scutum incompletely divided by median stripe of dark scales



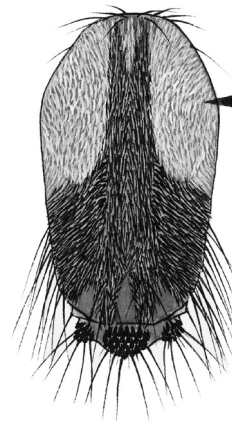
↳ To PLATE 48 (Below)

Anterior pale scaling of scutum reduced to small lateral semicircular pale areas on anterior side of scutal angle

Anterior pale scaling of scutum more extensive, covering anterolateral areas from anterior promontory to point posterior to scutal angle



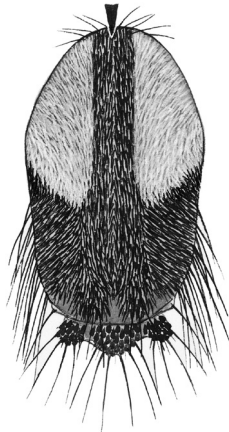
Do. inermis



Do. novonivea and *Do. litorea*

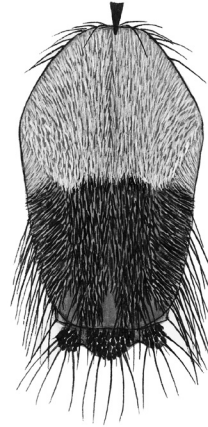
From PLATE 45: Prealar scales absent

Anterior pale scaling of scutum entirely divided by median longitudinal stripe of dark scales



Do. ganapathi

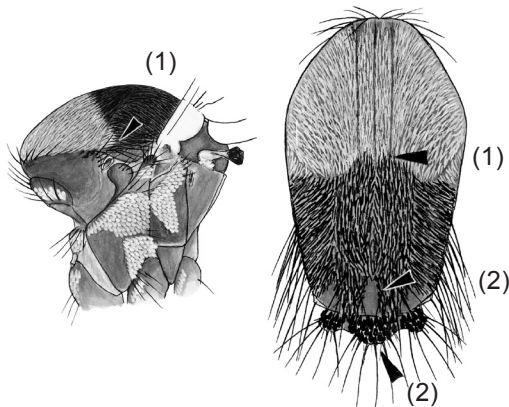
Anterior pale scaling of scutum incompletely or not at all divided by median longitudinal stripe of dark scales



↳ To PLATE 49

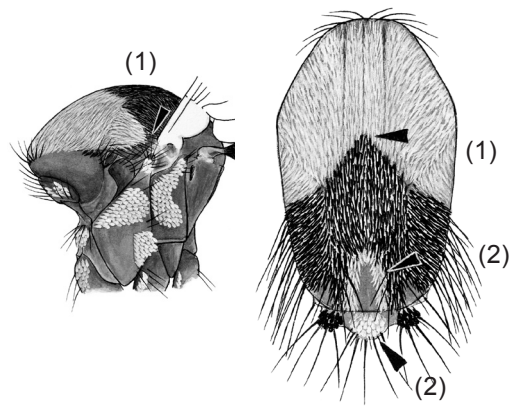
From PLATE 47: Anterior pale scaling of scutum incompletely divided by median stripe of dark scales

1. Anterior pale scaling of scutum extending posteriorly to point before paratergite laterally, slightly indented by dark scaling posteromedially
2. No pale scales around prescutellar space, pale scales occasionally on midlobe of scutellum



Do. harinasutai

1. Anterior pale scaling of scutum extending to point posterior to level of paratergite laterally, sharply and deeply indented by dark scaling posteromedially
2. Pale scales around prescutellar space and/or midlobe of scutellum

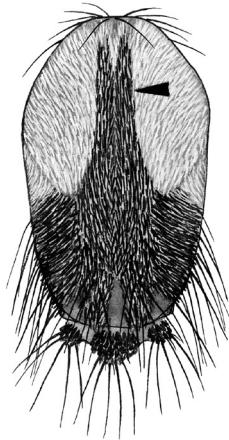


Do. albilateralis

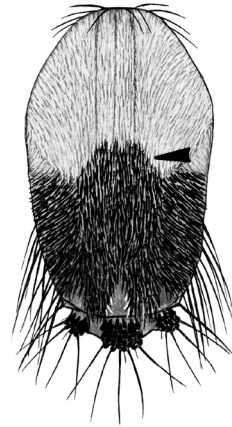
From PLATE 48: Anterior pale scaling of scutum incompletely or not at all divided by median longitudinal stripe of dark scales

Anterior pale-scaled area of scutum deeply notched mesally by dark scales

Anterior pale-scaled area of scutum more or less straight posteriorly, or slightly concave mesally-

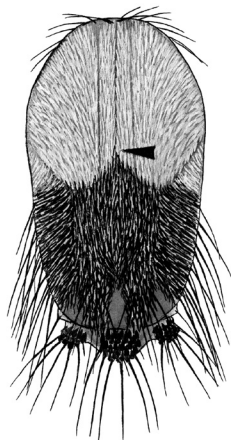


Do. mikrokopion

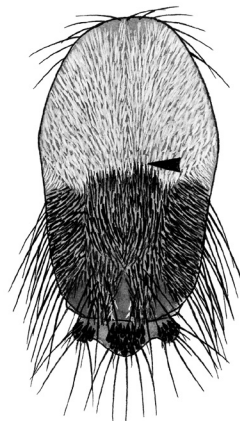


Anterior pale-scaled area of scutum distinctly notched mesally on posterior margin by dark scales

Anterior pale-scaled area of scutum more or less straight posteriorly, without distinct mesal notch of dark scales



Do. niveoides

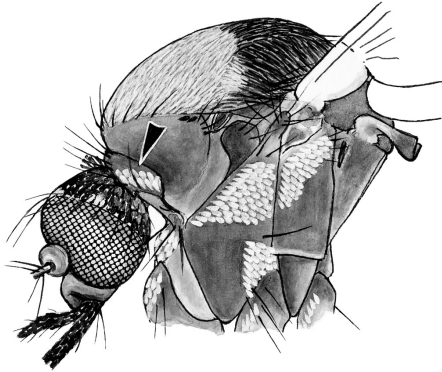


➤ To PLATE 50

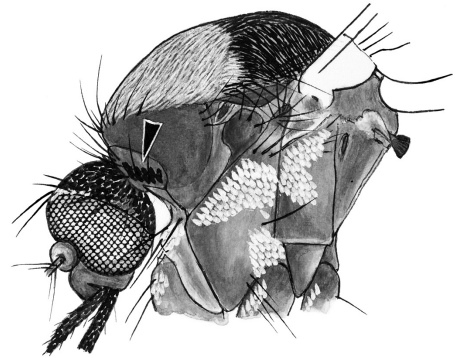
From PLATE 49: Anterior pale-scaled area of scutum more or less straight posteriorly, without distinct mesal notch of dark scales

Anteprenotum with silvery scales

Anteprenotum mostly with dark or translucent scales



Do. pexa



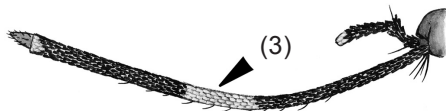
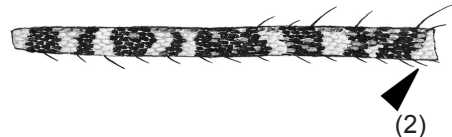
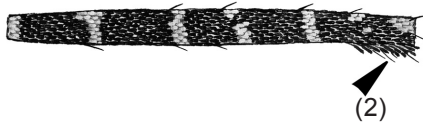
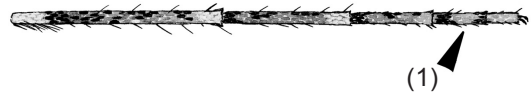
Do. vana

**KEY TO THE SPECIES OF GENUS *FINLAYA*
ADULT FEMALES**

From PLATE 5: Wing with conspicuous white or yellow spots

- 1. Hindtarsomere 4 dark-scaled
- 2. Apices of all femora with ventrolateral tufts of dark scales
- 3. Proboscis with median pale band

- 1. Hindtarsomere 4 with pale scales
- 2. Apices of femora without ventrolateral tufts of dark scales
- 3. Proboscis without distinct median pale band



Fl. poicilia^a

Fl. flavipennis^b
or species nr. *Fl. flavipennis*

^aBlack and white species

^bBlack, white and yellow species