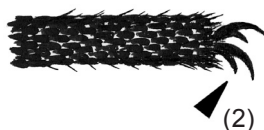
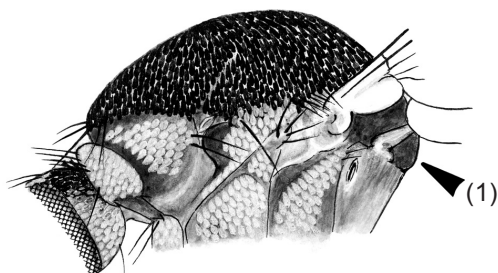


**KEY TO THE SUBGENERA AND SPECIES OF GENUS *HEIZMANNIA*
ADULT FEMALES^a**

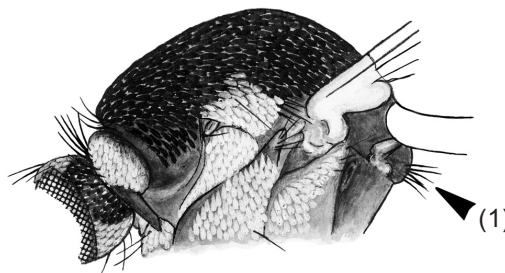
From PLATE 1: Scutum with broad, round, bright metallic flat scales; antepronota usually large and approximated

- 1. Mesopostnotal setae absent
- 2. Foreungues (claws) toothed



Subgenus *Mattinglyia* (Mat.)

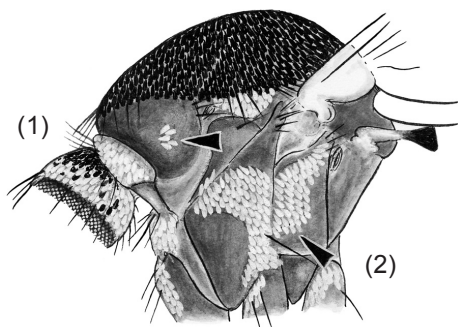
- 1. Mesopostnotal setae present (except in *Hz. thelmae*)
- 2. Foreungues (claws) simple



Subgenus *Heizmannia* (Hez.)

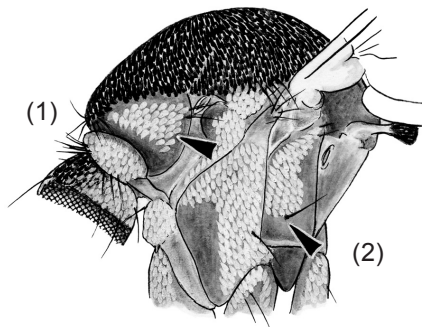
↳ To PLATE 53

- 1. Postpronotum with a few white scales
- 2. Lower anterior mesepimeral seta absent



Hz. (Mat.) catesi

- 1. Postpronotum covered with silvery scales
- 2. Lower anterior mesepimeral seta present



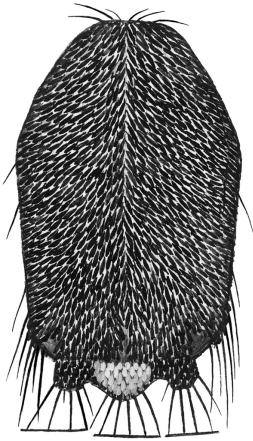
Hz. (Mat.) achaetae

^aFemales of *Hz. proxima* and *Hz. scanloni* are unknown. Also, *Heizmannia* females are difficult to distinguish because many species lack conspicuous differences and have not been studied in detail.

From PLATE 52: Mesopostnotal setae present (except in *H. thelmae*); foreungues (claws) simple

Scutal scales fusiform with metallic gold reflections

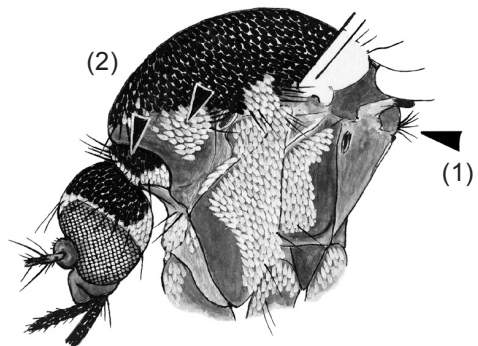
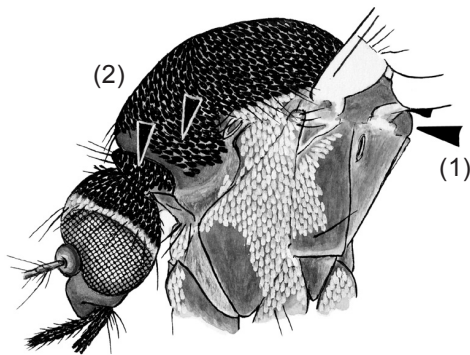
Scutal scales spatulate with dull bronze or bright iridescent reflections



H. (Hez.) demeilloni

1. Mesopostnotal setae absent
2. Antepronotum and postpronotum dark-scaled

1. Mesopostnotal setae present
2. Antepronotum and postpronotum never both dark-scaled



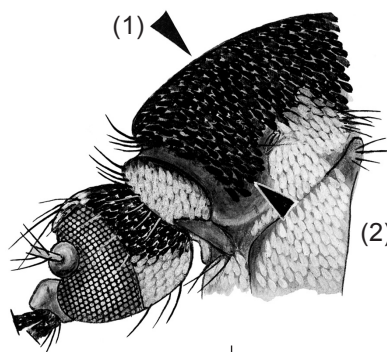
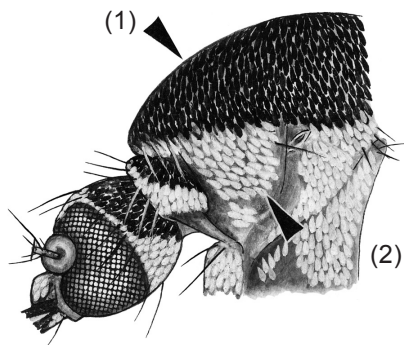
H. (Hez.) thelmae

➤ To PLATE 54

From PLATE 53: Mesopostnotal setae present; antepronotum and postpronotum never both dark-scaled

- 1. Scutal scales with dull bronze^a reflections
- 2. Postpronotum largely pale-scaled (except *Hz. communis*)

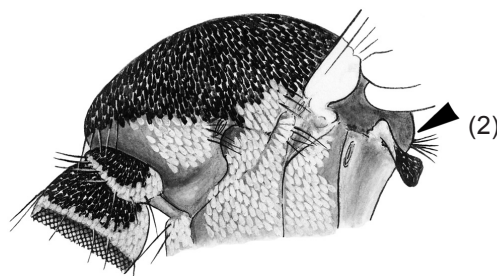
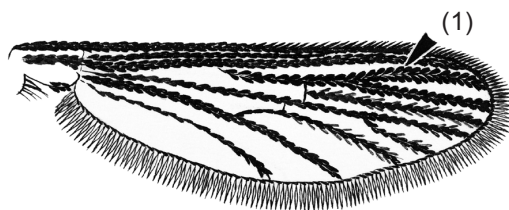
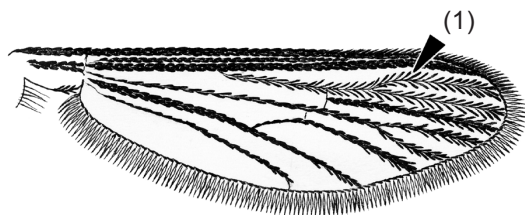
- 1. Scutal scales with bright metallic reflections or
- 2. Postpronotum black-scaled



↳ To PLATE 57

- 1. Wing vein R₂ with narrow scales
- 2. Mesopostnotum often with scales as well as setae

- 1. Wing vein R₂ with broad or very broad scales
- 2. Mesopostnotum rarely with scales



↳ To PLATE 55

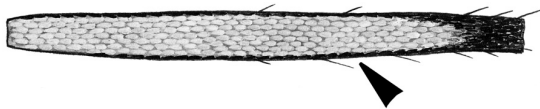
↳ To PLATE 56

^aBronze = more brown or gold.

From PLATE 54: Wing vein R_2 with narrow scales; mesopostnotum often with scales as well as setae

Hindfemur with dark ventral stripe extending from apex to base

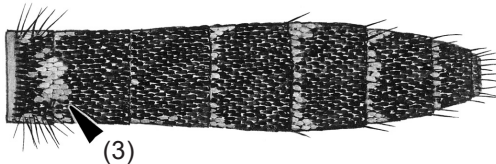
Hindfemur pale ventrally, without dark ventral stripe



Hz. (Hez.) taiwanensis

1. Proboscis usually with pale spot or streak ventrally at base
2. Clypeus pale-scaled^a
3. Tergum II with median pale scale-patch

1. Proboscis entirely dark-scaled
2. Clypeus bare
3. Tergum II with dark scales only



Hz. (Hez.) complex

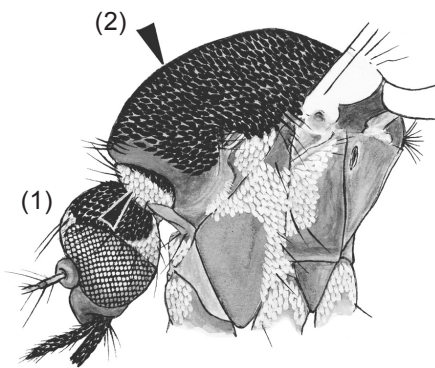
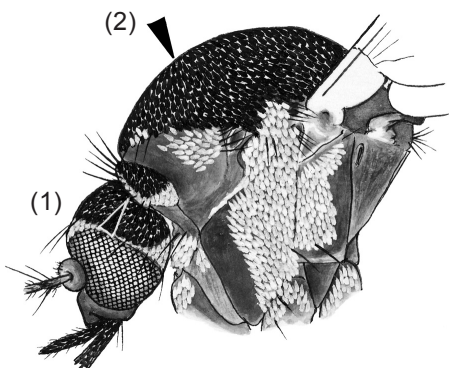
Hz. (Hez.) chengi

^aThe clypeus is bare in some *Hz. complex*.

From PLATE 54: Wing vein R₂ with broad or very broad scales; mesopostnotum rarely with scales

1. Anteprenotal lobes pale-scaled on anterior border only
2. Scutal scales with dull greenish bronze reflections

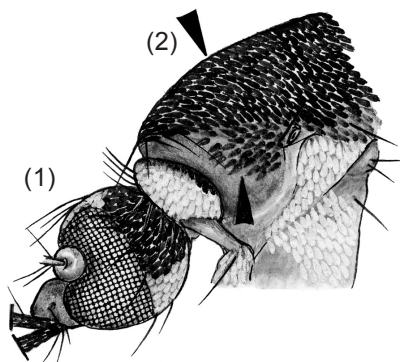
1. Anteprenotal lobes largely pale-scaled
2. Scutal scales otherwise



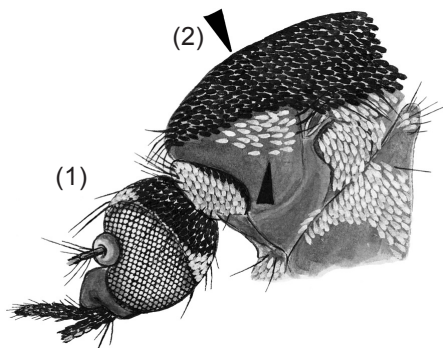
Hz. (Hez.) aureochaeta^a

1. Postpronotum with dark scales only
2. Scutal scales with dull bluish bronze reflections

1. Postpronotum with whitish or pale brown scales
2. Scutal scales with dull bronze reflections



Hz. (Hez.) communis

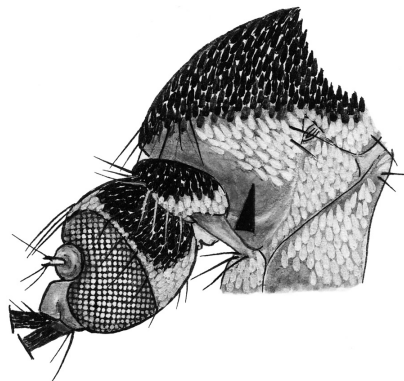
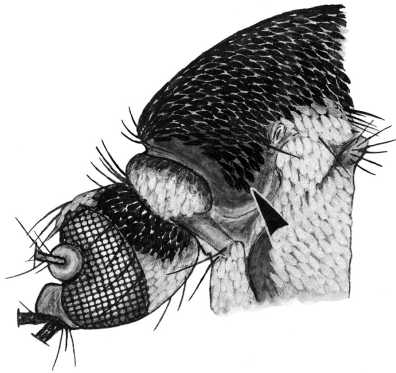


Hz. (Hez.) macdonaldi

^aSome *Hz. aureochaeta* have one or two pale scales on the mesopostnotum.

From PLATE 54: Scutal scales with bright metallic reflections or postpronotum black-scaled

Postpronotum entirely dark-scaled Postpronotum largely pale-scaled



└─▶ To PLATE 59

Lateral lobes of scutellum with pale scales Lateral lobes of scutellum with dark scales



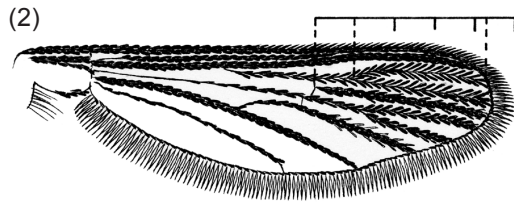
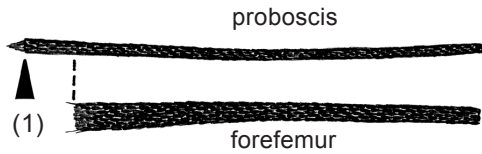
H. (Hez.) mattinglyi



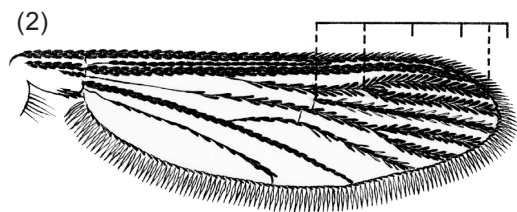
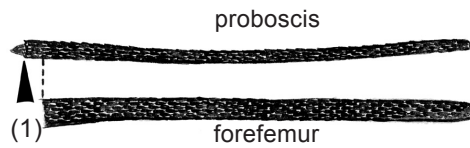
└─▶ To PLATE 58

From PLATE 57: Lateral lobes of scutellum with dark scales

1. Proboscis usually longer than forefemur
2. Wing vein R_2 at least 2.7 times length of vein R_{2+3} , often longer

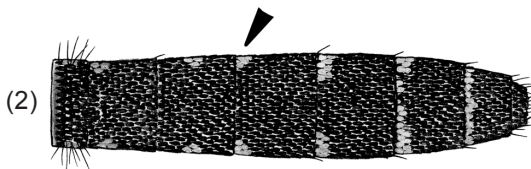


1. Proboscis and forefemur about same length
2. Wing vein R_2 about 2.5 times length of vein R_{2+3}



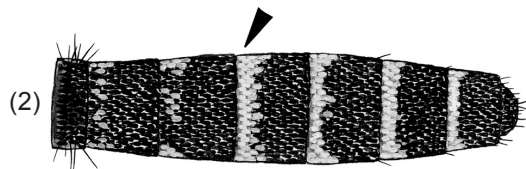
Hz. (Hez.) reidi

1. Hindfemur with dark apical band prolonged ventrally and dorsally towards base
2. Abdominal terga IV–VII with lateral pale patches



Hz. (Hez.) scintillans

1. Hindfemur otherwise
2. Abdominal terga IV–VII with basal pale bands

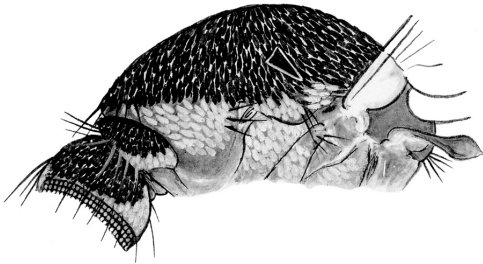


Hz. (Hez.) covelli

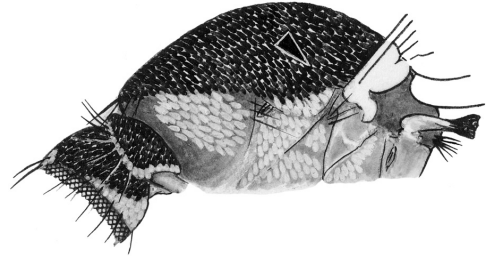
From PLATE 57: Postpronotum largely pale-scaled

Supraalar area with patch (spot) of broad whitish scales above wing base

Supraalar area without patch of broad whitish scales above wing base



Hz. (Hez.) persimilis



Hz. (Hez.) propinqua