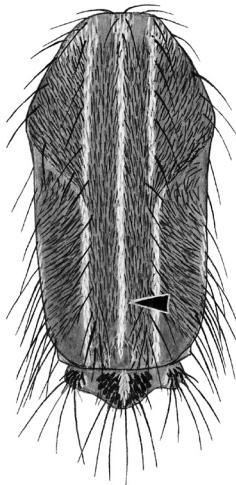


**KEY TO THE SPECIES OF GENUS *HULECOETEOMYIA*  
ADULT FEMALES**

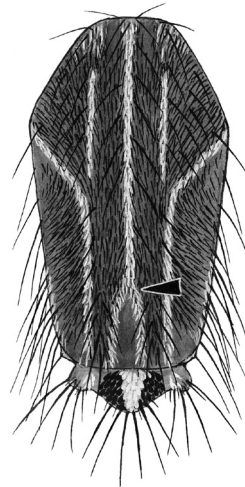
From PLATE 14: Hindtarsomeres 1–3 with basal pale bands

Scutum with median longitudinal pale line  
not forked posteriorly at prescutellar space

Scutum with median longitudinal pale line  
forked posteriorly at prescutellar space



*Hl. jugraensis*



Proboscis entirely dark-scaled

Proboscis with some pale scaling



*Hl. saxicola*

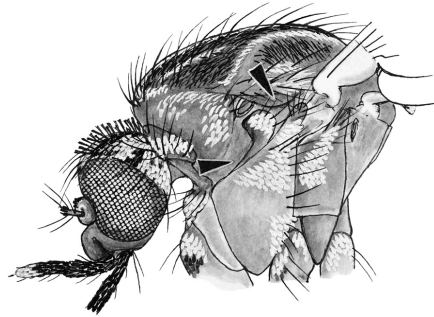
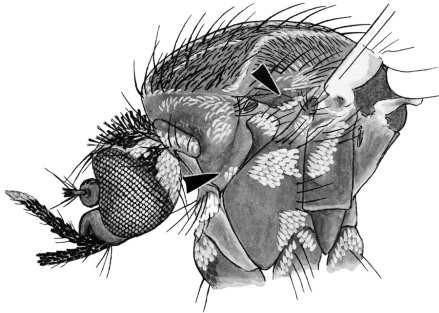


➤ To PLATE 61

From PLATE 60: Proboscis with some pale scaling

Paratergite and usually subspiracular area with small patch of broad white scales

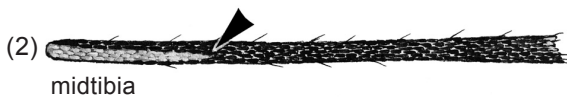
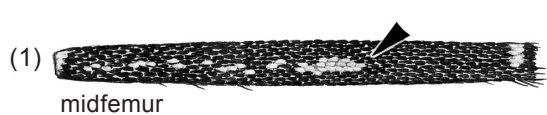
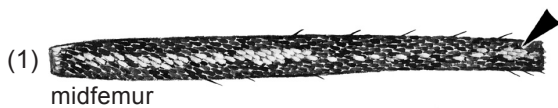
Paratergite and subspiracular area without scales



↳ To PLATE 62 (Above)

1. Midfemur with anterior line of white scales usually extending from near base to apex
2. Anterior surface of midtibia with longitudinal line of white scales on basal 0.33 or more

1. Midfemur with line of white scales not extending to apex
2. Anterior surface of midtibia with short line of white scales on less than basal 0.33



*Hl. reinerti*

*Hl. formosensis* and *Hl. pallirostris*  
(females cannot be separated)

From PLATE 61: Paratergite and subspiracular area without scales

Proboscis with ventral line of pale scales that may be slightly expanded onto lateral surfaces

Proboscis with ventral line of pale scales distinctly expanded onto lateral surfaces, sometimes forming a median pale band



*Hl. harveyi*



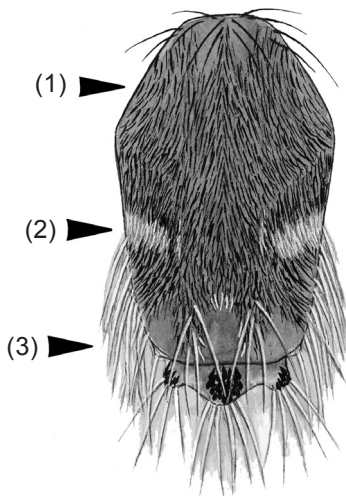
*Hl. chrysolineata*

**KEY TO THE SPECIES OF GENUS *KENKNIGHTIA*  
ADULT FEMALES**

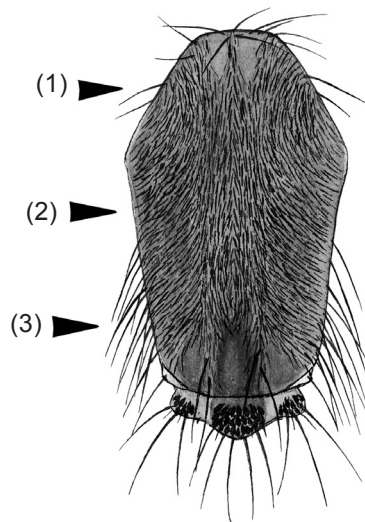
From PLATE 20: Postpronotum covered with overlapping broad silvery scales; ocular line of head with broad, silvery scales; anterior 0.25 of scutum without patch of white scales; paratergite with scales

- 1. Lateral scutal fossal setae absent
- 2. Antealar area with patch of narrow golden scales along posterior margin
- 3. Long supraalar setae golden

- 1. Lateral scutal fossal setae present
- 2. Antealar area without patch of golden scales along posterior margin
- 3. Supraalar setae dark



*Ke. harbachi*



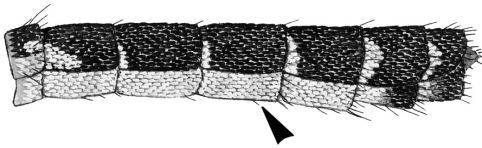
*Ke. dissimilis*

**KEY TO THE SPECIES OF GENUS *LORRAINEA*  
ADULT FEMALES**

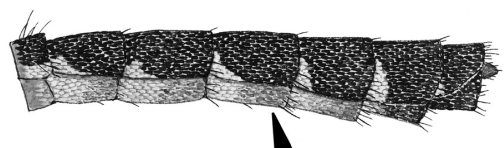
From PLATE 18: All lobes of scutellum covered with broad dark scales; alula with broad scales on dorsal surface; abdominal segment VII laterally compressed; abdominal segment VIII narrow, nearly retracted into segment VII

Abdominal sterna largely pale-scaled, strongly contrasting with dark scaling of abdominal terga

Abdominal sterna dirty white-scaled, not strongly contrasting with dark scaling of abdominal terga



*Lo. fumida*



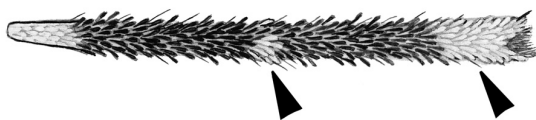
*Lo. amesii*

**KEY TO THE SPECIES OF GENUS *MUCIDUS*  
ADULT FEMALES**

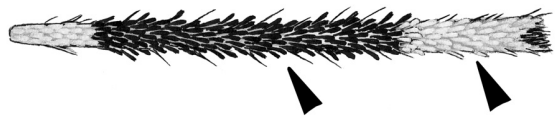
From PLATE 4: Wing membrane clouded at  $rm$ , bases of  $R_s$ ,  $R_{4+5}$ , and  $M_{3+4}$ ; large yellow, white and brown mosquitoes with shaggy appearance

Foretibia with apical white band less than 0.25 length of tibia, and with median pale band or patch

Foretibia with apical white band 0.25 or more length of tibia, or median pale band absent



*Mu. (Muc.) quasiferinus*



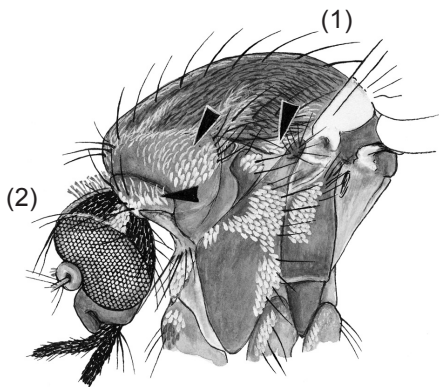
*Mu. (Muc.) laniger*

**KEY TO THE SPECIES OF GENUS *PARAEDES*  
ADULT FEMALES**

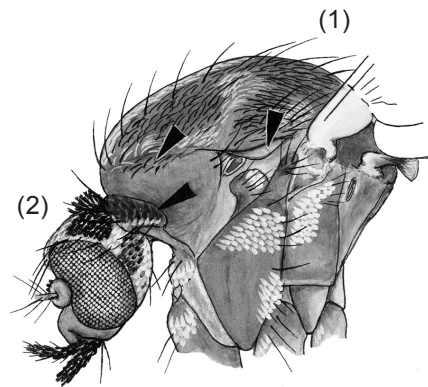
From PLATE 10: Acrostichal setae usually absent; acrostichal area with stripe (or patches) of golden scales; all tarsomeres entirely dark

- 1. Paratergite with scales
- 2. Antepronotum and/or postpronotum with both narrow and broad scales

- 1. Paratergite without scales
- 2. Antepronotum with only broad scales, postpronotum otherwise



*Pr. thailandensis*



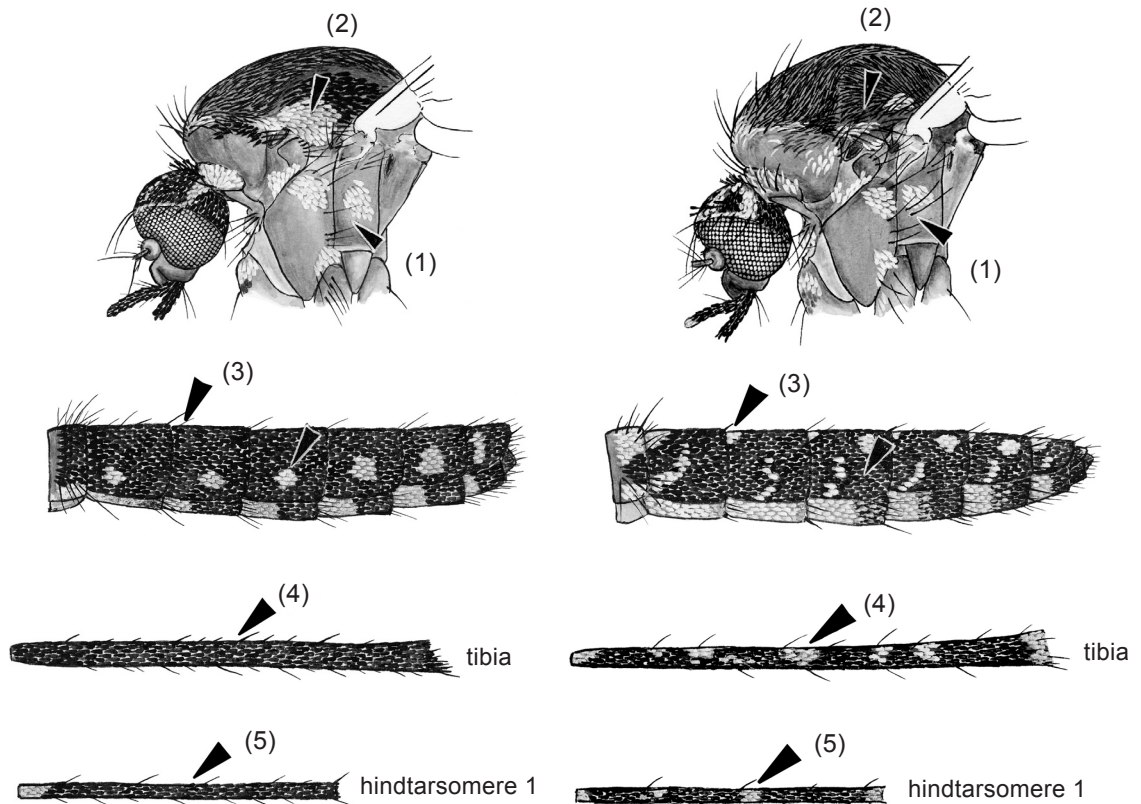
*Pr. ostentatio*

**KEY TO THE SUBGENERA AND SPECIES OF GENUS *PETERMATTINGLYIUS***  
**ADULT FEMALES**

From PLATE 5: Scutum without white spots; prescutellar area usually covered with broad dark scales extending to completely cover scutellum; hindtarsomere 5 dark-scaled

1. Lower anterior mesepimeral seta absent
2. Large patch of broad white scales above and over paratergite
3. Abdominal terga I–III without dorsomedian pale scales, terga II–VII with mid-lateral pale spots
4. Tibiae without pale spots
5. Hindtarsomere 1 without median pale band

1. Lower anterior mesepimeral seta present
2. Scales above and over paratergite otherwise
3. Abdominal terga I–III with dorsomedian pale scales, terga II–VII without mid-lateral pale spots
4. Tibiae with pale spots
5. Hindtarsomere 1 with median pale band



Subgenus *Aglaonotus* (Agl.)  
*Pe. (Agl.) whartoni*

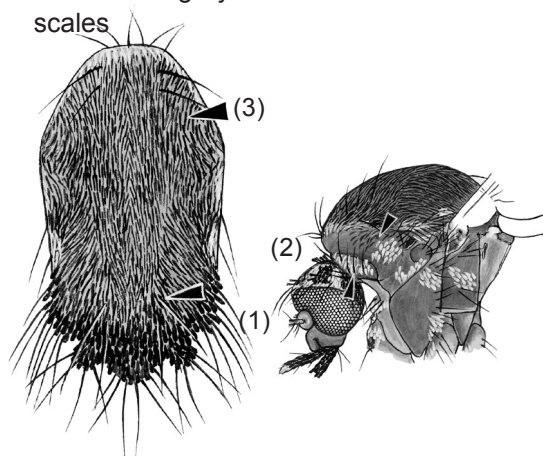
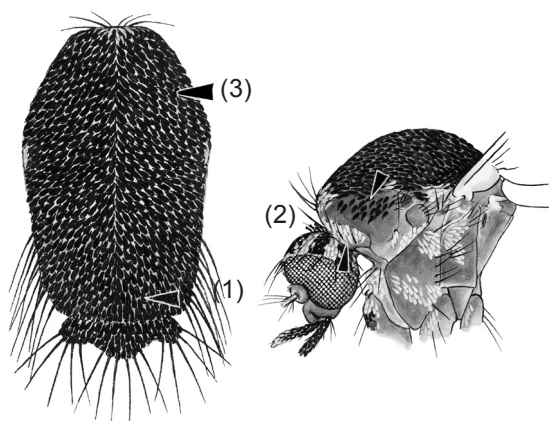
Subgenus *Petermattinglyius* (Pet.)

↳ To PLATE 66

From PLATE 65: Lower anterior mesepimeral seta present; scales above and over paratergite otherwise; abdominal terga I–III with dorsomedian pale scales, terga II–VII without mid-lateral pale spots; tibiae with pale spots; hindtarsomere 1 with median pale band

- 1. Prescutellar setae absent
- 2. Ante- and postpronotum with broad scales
- 3. Scutum largely covered with broad scales

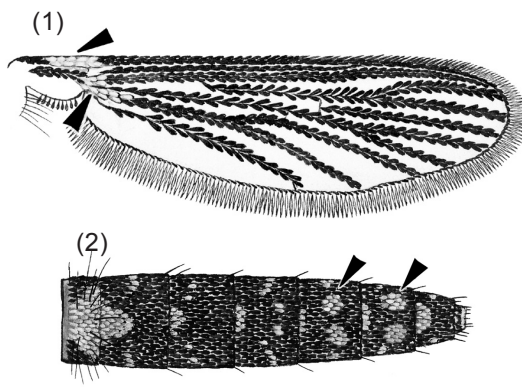
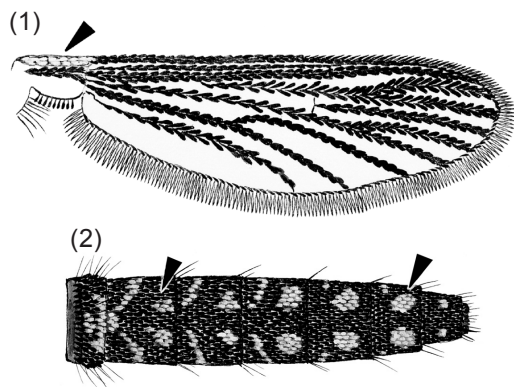
- 1. Prescutellar setae present
- 2. Ante- and postpronotum with broad and narrow scales
- 3. Scutum largely covered with narrow scales



*Pe. (Pet.) franciscoi*

- 1. Wing with pale scales on base of costa only
- 2. Abdominal terga II–VI usually with 2 submedian pale spots

- 1. Wing with pale scales on base of costa, radius and cubitus
- 2. Only abdominal terga V and VI with 2 distinct submedian pale spots



*Pe. (Pet.) iyengari*

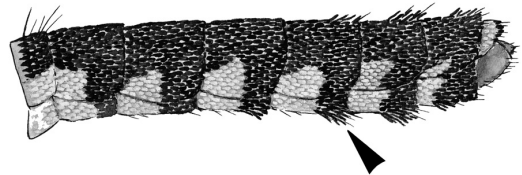
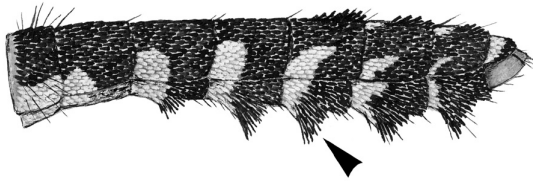
*Pe. (Pet.) scanloni*

**KEY TO THE SPECIES OF GENUS *PHAGOMYIA*  
ADULT FEMALES**

From PLATE 22: Hindtarsomeres with both basal and apical pale bands; anterior 0.30–0.70 of scutum covered with white scales

Abdominal sterna with long outstanding scale-tufts

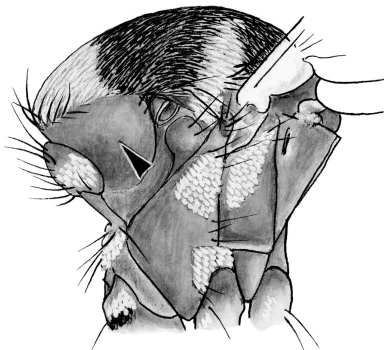
Abdominal sterna with moderately developed outstanding scale-tufts or scale-tufts absent



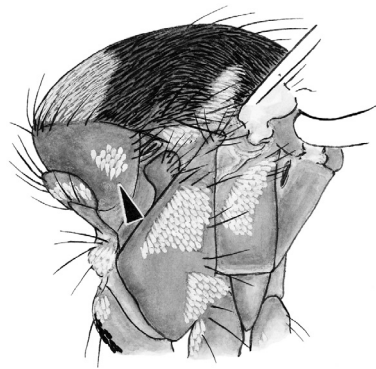
└─▶ To PLATE 68

Postpronotum without scales

Postpronotum with patch of broad white scales



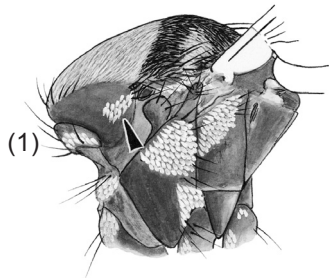
*Ph. khazani*



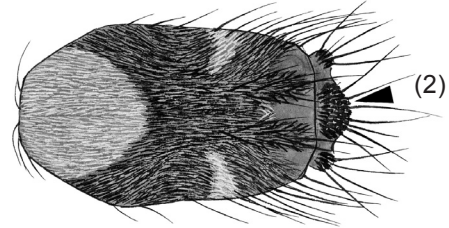
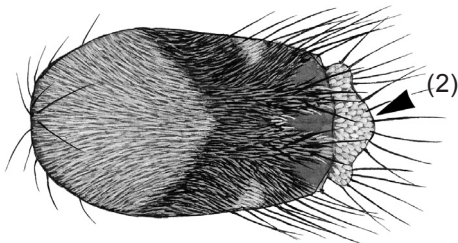
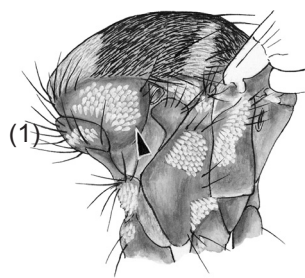
*Ph. prominens*

From PLATE 67: Abdominal sterna with moderately developed outstanding scale-tufts or scale-tufts absent

- 1. Postpronotum with small patch of broad white scales posteriorly
- 2. Scutellum densely covered with broad white scales on all lobes

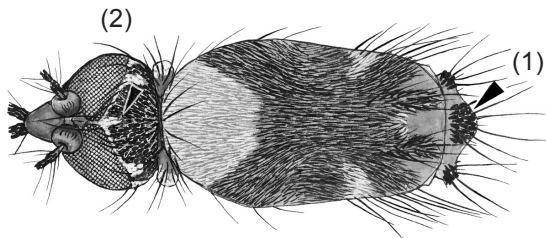


- 1. Postpronotum largely covered with broad white scales
- 2. Scutellum otherwise

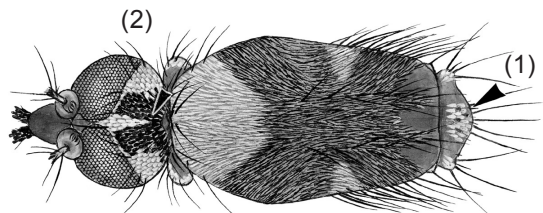


*Ph. lophoventralis*

- 1. Scutellum with dark scales on all lobes
- 2. Vertex with or without anteromedian spot of white decumbent scales



- 1. Scutellum with pale scales on median lobe
- 2. Vertex with narrow median line of white decumbent scales



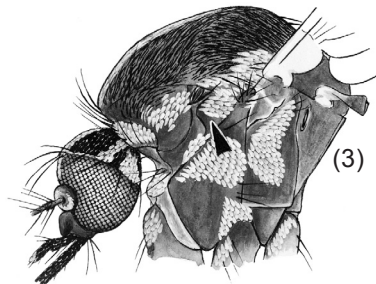
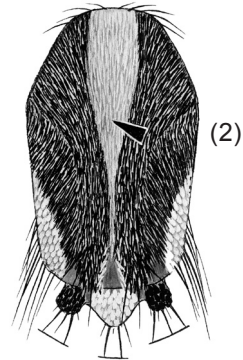
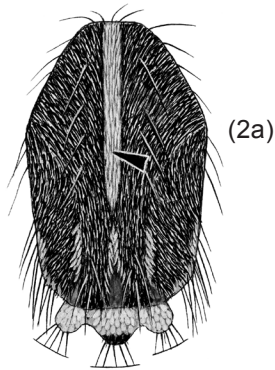
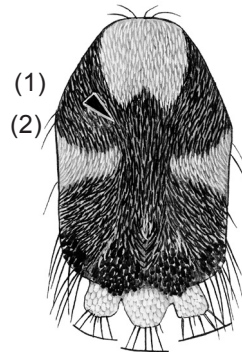
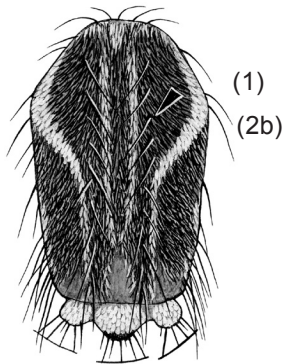
*Ph. feegradei*

*Ph. assamensis*

**KEY TO THE SUBGENERA AND SPECIES OF GENUS *STEGOMYIA*  
ADULT FEMALES**

From PLATE 22: Maxillary palpus with white scales at apex; antennal pedicel with scales on lateral surfaces; paratergite with scales

- |  |   |
|--|---|
| <ul style="list-style-type: none"> <li>1. Dorsocentral setae present</li> <li>2. Scutum with median longitudinal stripe (2a) or submedian longitudinal stripes (2b) of white scales</li> <li>3. Postspiracular area without scales (except <i>St. pseudalbopicta</i>)</li> </ul> | <ul style="list-style-type: none"> <li>1. Dorsocentral setae absent</li> <li>2. Scutum otherwise</li> <li>3. Postspiracular area with scales</li> </ul> |
|--|---|

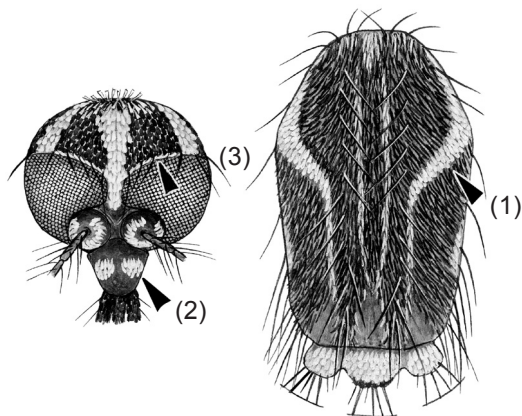


↳ To PLATE 70

↳ To PLATE 73

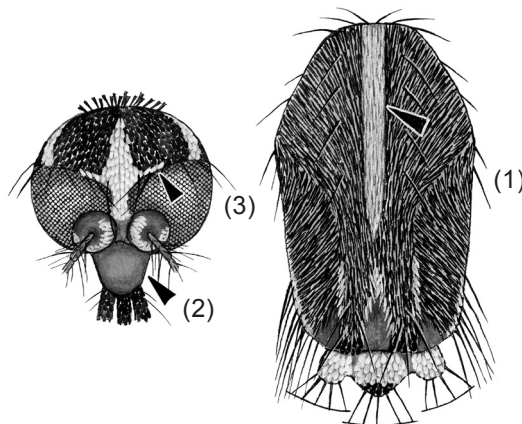
From PLATE 69: Dorsocentral setae present; scutum with median longitudinal stripe or submedian longitudinal stripes of white scales; postspiracular area without scales (except *St. pseudalbopicta*)

1. Scutum with lyre-shaped white markings laterally
2. Clypeus with patch of pale scales
3. Ocular scales narrow



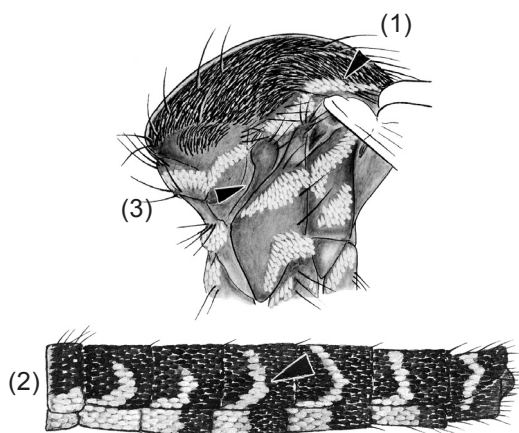
Subgenus *Stegomyia* (*Stg.*)  
*St. (Stg.) aegypti*

1. Scutum without lyre-shaped white markings
2. Clypeus bare
3. Ocular scales broad



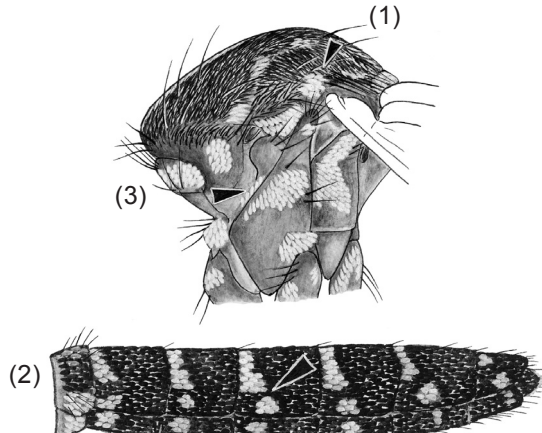
Unplaced species

1. Supraalar area with patch of pale scales extended toward scutellum
2. Abdominal terga IV–VI with dorsal white bands connected to lateral pale patches
3. Subspiracular area usually without scales



*St. malayensis*

1. Supraalar area with spot of pale scales not extended toward scutellum
2. Abdominal terga IV–VI with dorsal white bands separated from lateral spots
3. Subspiracular area with scales



➤ To PLATE 71

From PLATE 70: Supraalar area with spot of pale scales not extended toward scutellum; abdominal terga III–VI with basal white bands separated from lateral spots; subspiracular area with scales

Scutum with lateral patch of broad pale scales just anterior to level of wing root

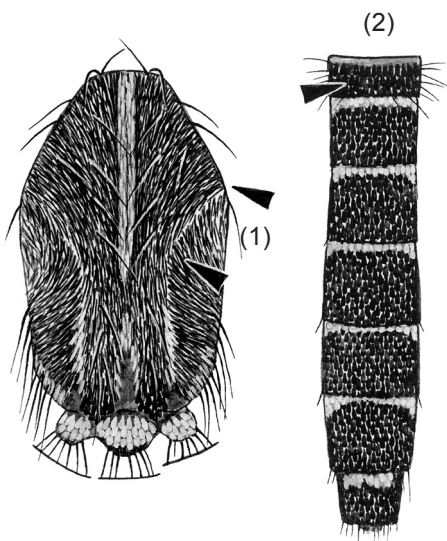
Scutum with lateral patch of narrow pale scales just anterior to level of wing root



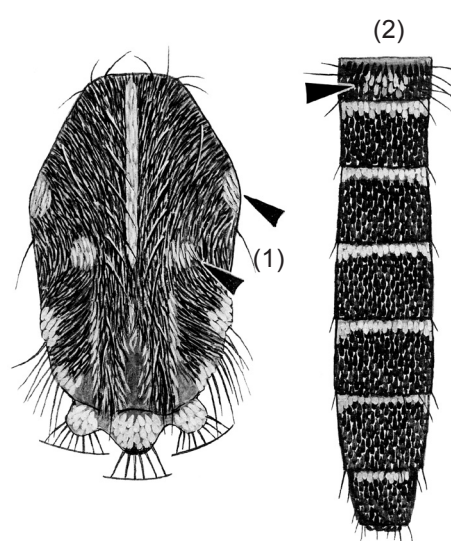
└─▶ To PLATE 72

1. Scutum without spots of pale scales at scutal angle and on dorsocentral areas  
2. Abdominal tergum I without median patch of white scales

1. Scutum with spots of pale scales at scutal angle and on dorsocentral areas  
2. Abdominal tergum I with median patch of white scales



*St. albopicta*

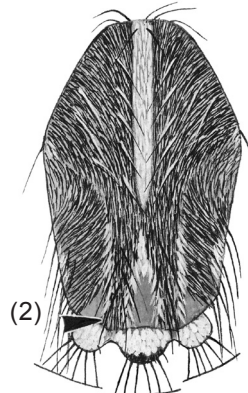
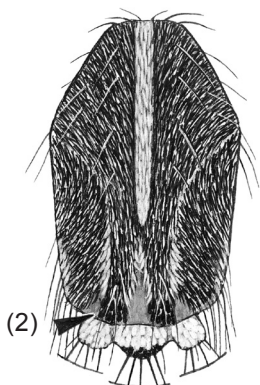
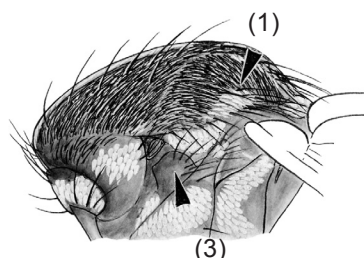
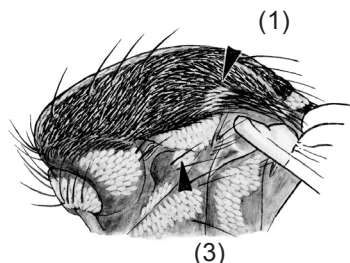


*St. seatoi*

From PLATE 71: Scutum with lateral patch of narrow pale scales just anterior to level of wing root

1. Patch of whitish scales above and just before level of wing root
2. Broad dark scales on either side of prescutellar space adjacent to scutellum
3. Postspiracular area with scales

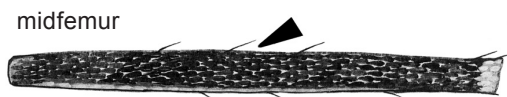
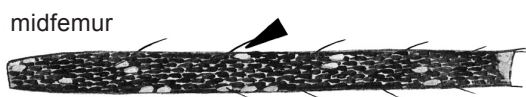
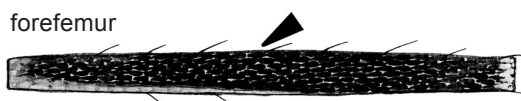
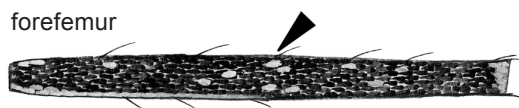
1. Patch of yellowish scales above and on lateral margin just before level of wing root
2. Narrow dark scales on either side of prescutellar space adjacent to scutellum
3. Postspiracular area without scales



*St. pseudalbopicta*

Anterior surfaces of fore- and midfemora speckled with pale scales

Anterior surfaces of fore- and midfemora entirely dark-scaled



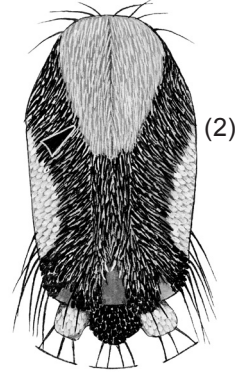
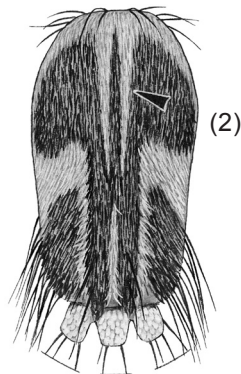
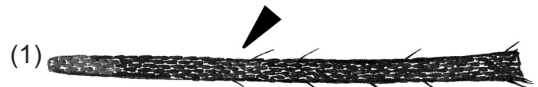
*St. novalbopicta*

*St. patriciae*

From PLATE 69: Dorsocentral setae absent; scutum otherwise; postspiracular area with scales

- 1. Each tibia with white band
- 2. Scutum with submedian white stripes of narrow scales on either side of acrostrichal area

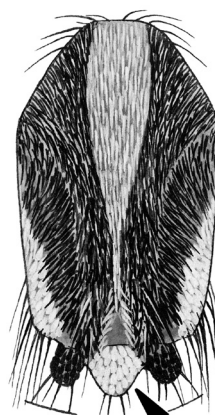
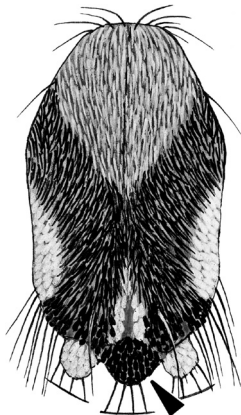
- 1. Tibiae without white bands
- 2. Scutal ornamentation otherwise



Subgenus *Xyele* (*Xye.*)  
*St. (Xye.) desmotes*

Scutellum with broad dark scales on midlobe and broad white scales on lateral lobes

Scutellum with broad white scales on midlobe and broad white or dark scales, or both, on lateral lobes



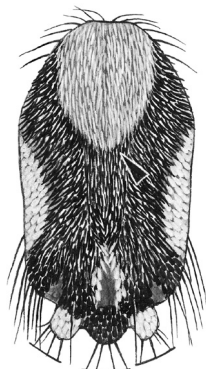
Subgenus *Heteraspidion* (*Het.*)

↳ To PLATE 74 (Above)

↳ To PLATE 74 (Below)

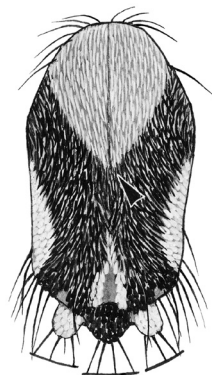
From PLATE 73: Scutellum with broad dark scales on midlobe and broad white scales on lateral lobes

Scutum with a large median oval white patch, reaching from anterior margin to about the middle of scutum, posterior end of patch more or less rounded or blunt



*St. (Het.) annandalei*

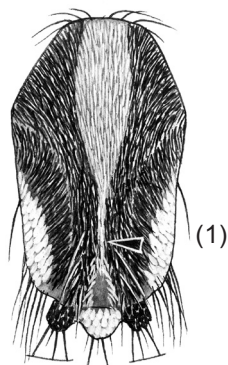
Scutum with a large median triangular white patch, reaching from anterior margin to point beyond midlength, tapered and acute posteriorly



*St. (Het.) craggi*

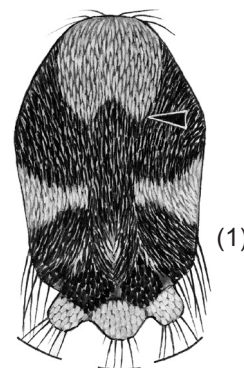
From PLATE 73: Scutellum with broad white scales on midlobe and broad white or dark scales, or both, on lateral lobes

1. Scutum with median longitudinal white stripe, narrowing before prescutellar area
2. Anterior surface of midfemur entirely dark-scaled



Subgenus *Huangmyia* (*Hua.*)  
*St. (Hua.) malikuli* and *St. (Hua.) perplexa*<sup>a</sup>

1. Scutum with broad median white area on anterior 0.4 of scutum, not a stripe
2. Anterior surface of midfemur with spot of pale scales near midlength



Unplaced species

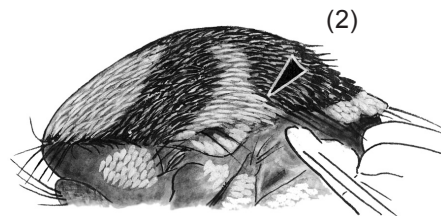
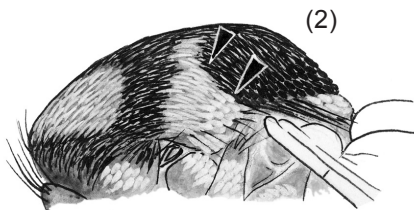
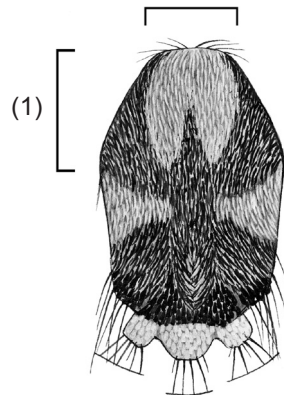
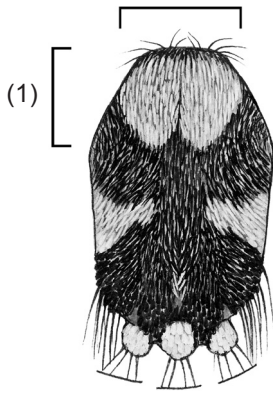
↳ To PLATE 75

<sup>a</sup>Females of *St. (Hua.) malikuli* and *St. (Hua.) perplexa* are inseparable.

From PLATE 74: Scutum with broad median white area on anterior 0.4 of scutum, not a stripe; anterior surface of midfemur with spot of pale scales near midlength

1. Scutum with relatively short anterior, broader- than-long, white patch
2. Antealar pale patch with narrow (anteriorly) and broad (posteriorly) white scales

1. Scutum with longer median white patch, length equal to or greater than width
2. Antealar pale patch with narrow white scales only



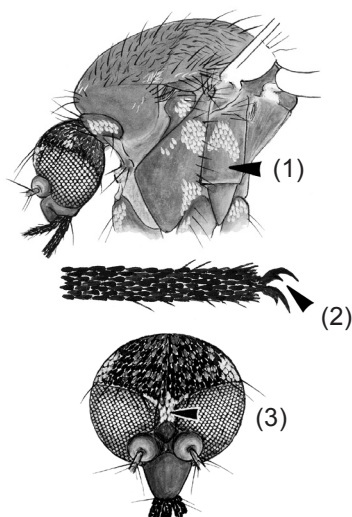
*St. gardnerii imitator*

*St. w-alba*

**KEY TO THE SUBGENERA AND SPECIES OF GENUS VERRALLINA  
ADULT FEMALES<sup>a</sup>**

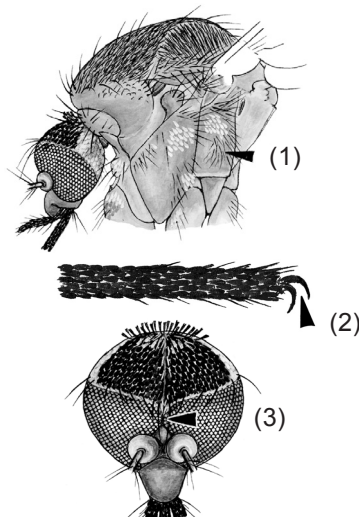
From PLATE 18: All lobes of scutellum covered with narrow dark or pale scales; alula without broad dorsal scales; abdominal segment VII dorsoventrally flattened; abdominal segment VIII broad, not retracted into segment VII

- 1. Mesepimeron without fine hairlike setae posterior or ventral to scale-patch
- 2. Hindungues toothed
- 3. Eyes separated dorsally



Subgenus *Harbachius* (Har.)

- 1. Mesepimeron with few to numerous fine hairlike setae posterior and/or ventral to scale-patch
- 2. Hindungues simple (except in *Ve. notabilis*)
- 3. Eyes contiguous dorsally



To PLATE 77

- 1. Anteprenotum covered with pale scales
- 2. Postspiracular area without scales

Specimens not available

*Ve. (Har.) indecorabilis*<sup>b</sup>

- 1. Anteprenotum covered with silvery white scales
- 2. Postspiracular area covered with scales



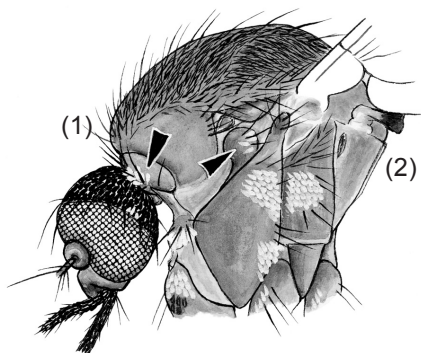
*Ve. (Har.) yusafi*

<sup>a</sup>Females of *Ve. (Nma.) protuberans*, *Ve. sohni*, and *Ve. torosa* are unknown.

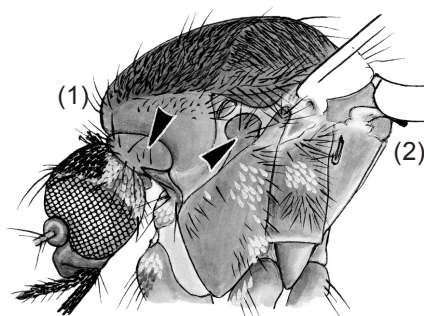
<sup>b</sup>*Verrallina indecorabilis* of Klein (1973).

From PLATE 76: Mesepimeron with few to numerous fine hairlike setae posterior and/or ventral to scale-patch; hindungues simple (except in *Ve. notabilis*); eyes contiguous dorsally

- |  |  |
|--|--|
| <p>1. Antepronotal scales present<br/>2. Postspiracular scales present</p> | <p>1. Antepronotal scales absent<br/>2. Postspiracular scales absent</p> |
|--|--|



Subgenus *Neomacleaya* (*Nma.*)<sup>a</sup>  
(in part)  
Subgenus *Verrallina* (*Ver.*)<sup>c</sup>  
(in part)  
*Ve. (Ver.) lugubris*



Subgenus *Neomacleaya* (*Nma.*)<sup>b</sup>  
(in part)  
Subgenus *Verrallina* (*Ver.*)<sup>c</sup>  
(in part)  
*Ve. (Ver.) butleri* and *Ve. (Ver.) dux*

<sup>a</sup>*Verrallina (Nma.) adusta, andamanensis, hispida, phnoma, sohni, and vallistris.*

<sup>b</sup>*Verrallina (Nma.) atria, clavata, cretata, crytolabis, gibbosa, incerta, latipennis, notabilis, protuberans, pseudodiurna, torosa, and uncus.*

<sup>a,b,c</sup>These species can be identified by dissection of the male and female genitalia.