

Table 1
References to detailed taxonomic sources.

Genera	Taxonomic references
<i>Aedimorphus</i>	Reinert, 1973a, 2000f
<i>Alanstonea</i>	Mattingly, 1960; Reinert, 2000f; Reinert <i>et al.</i> , 2006
<i>Armigeres</i> (<i>Armigeres</i>) (<i>Leicesteria</i>)	Thurman, 1959; Ramalingam, 1987; Toma <i>et al.</i> , 1994 Thurman, 1959; Macdonald, 1960; Reinert, 2000f, 2002b
<i>Ayurakitia</i>	Thurman, 1954a; Reinert, 1972, 2000b, 2001a
<i>Borichinda</i>	Harbach <i>et al.</i> , 2007b
<i>Bothaella</i>	Reinert, 1973c, 2000f
<i>Bruceharrisonius</i>	Barraud, 1934; Harrison <i>et al.</i> , 1991; Reinert, 2003a
<i>Canraedes</i>	Barraud, 1934; Mattingly, 1958a,b; Reinert, 2000f
<i>Christophersiomyia</i>	Mattingly, 1959; Abercrombie, 1977; Reinert, 2000f
<i>Collessius</i> (<i>Alloeomyia</i>) (<i>Collessius</i>)	Barraud, 1934; Harrison <i>et al.</i> , 1991; Reinert, 2008f; Reinert <i>et al.</i> , 2006, 2008
<i>Danielsia</i>	Barraud, 1934; Harrison <i>et al.</i> , 1991; Reinert, 2008c; Reinert <i>et al.</i> , 2009
<i>Downsiomyia</i>	Knight and Marks, 1952; Colless 1958, 1959; Knight, 1978; Tanaka <i>et al.</i> , 1979; Knight and Harrison, 1988; Harrison <i>et al.</i> , 1991; Reinert and Harbach, 2006; Reinert, 2008d
<i>Edwardsaedes</i>	Reinert, 1976a; Reinert, 2000f
<i>Finlaya</i>	Barraud, 1934; Knight and Laffoon, 1946; Marks, 1947; Bañez and Jueco, 1966; Reinert, 2002c; Reinert and Harbach, 2005; Reinert <i>et al.</i> , 2006
<i>Fredwardsius</i>	Huang, 1977b; Reinert, 2000a
<i>Gilesius</i>	Barraud, 1934; Reinert <i>et al.</i> , 2006; Reinert, 2009d
<i>Heizmannia</i> (<i>Heizmannia</i>) (<i>Mattinglyia</i>)	Mattingly, 1957, 1970; Reinert, 2002a; Reinert, 2003b
<i>Himalaius</i>	Barraud, 1934; Harrison <i>et al.</i> , 1991; Reinert <i>et al.</i> , 2006
<i>Hopkinsius</i> (<i>Yamada</i>)	Barraud, 1934; Reinert <i>et al.</i> , 2008; Reinert, 2009b
<i>Hulecoeteomyia</i>	Barraud, 1934; Knight, 1968; Rattanaarithikul and

Table 1 (continued).

Genera	Taxonomic references
<i>Isoaedes</i>	Harrison, 1988; Harrison <i>et al.</i> , 1991; Tewari and Hiriyan, 1996; Reinert, 2008b; Reinert <i>et al.</i> , 2008
<i>Jihlienius</i>	Reinert, 1979, 2000f; Harrison <i>et al.</i> , 1991
<i>Kenknightia</i>	Barraud, 1934; Harrison <i>et al.</i> , 1991; Reinert <i>et al.</i> , 2006; Reinert, 2009c
<i>Lorrainea</i>	Reinert, 1990b, 2002c; Harrison <i>et al.</i> , 1991
<i>Mucidus (Mucidus)</i>	Mattingly, 1959 (as <i>Skusea</i>); Belkin, 1962; Reinert, 2000f
<i>Neomelaniconion</i>	Mattingly, 1961; Tyson, 1970; Reinert, 2002c, 2006b
<i>Ochlerotatus (Empihals)</i>	Mattingly, 1961; Tanaka <i>et al.</i> , 1979; Reinert, 2000f
<i>Paraedes</i>	Belkin, 1962; Tanaka <i>et al.</i> , 1979; Reinert, 2002c; Reinert <i>et al.</i> , 2008
<i>Petermattinglyius (Aglanotus)</i>	Mattingly, 1958a,b; Reinert, 1981, 2000f
<i>(Petermattinglyius)</i>	Reinert, 1970a,b (as <i>Diceromyia</i>); Harrison <i>et al.</i> , 1991; Reinert <i>et al.</i> , 2008, 2009; Reinert, 2010
<i>Phagomyia</i>	Barraud, 1934; Reinert <i>et al.</i> , 2006; Reinert, 2008a
<i>Rhinoskusea</i>	Reinert, 1976b, 2002c
<i>Scutomyia</i>	Huang, 1979; Reinert, 1985, 2000f
<i>Stegomyia (Heteraspidion), (Huangmyia) (Stegomyia) (Xyele)</i>	Huang, 1972, 1979; Harrison <i>et al.</i> , 1972; Harrison <i>et al.</i> , 1991; Reinert <i>et al.</i> , 2009
	Unassigned to subgenus
<i>Tanakaius</i>	Reinert <i>et al.</i> , 2004; Reinert, 2008e
<i>Tewarius</i>	Reinert, 1973b; Reinert, 2006
<i>Udaya</i>	Thurman, 1954b; Mattingly, 1971; Reinert, 1990a; Reinert, 2000d
<i>Verrallina (Harbachius) (Neomacleaya) (Verrallina)</i>	Delfinado, 1967, 1968; Klein, 1973; Reinert, 1974; Harrison <i>et al.</i> , 1991; Reinert and Harbach, 1992; Reinert, 2001b
<i>Zeugomyia</i>	Delfinado, 1966; Mattingly, 1971; Benjaphong and Rattanarithikul, 1991; Reinert, 2000e

Table 2

Abbreviations of the 38 genera and 18 subgenera of aedine mosquitoes in Thailand
(adopted from Reinert *et al.*, 2004, 2006, 2008, 2009; and Reinert, 2009e).

Genus (Subgenus)	Abbr.	Genus (Subgenus)	Abbr.
<i>Aedimorphus</i>	<i>Am.</i>	<i>Jihlienius</i>	<i>Ji.</i>
<i>Alanstonea</i>	<i>As.</i>	<i>Kenknightia</i>	<i>Ke.</i>
<i>Armigeres</i> (<i>Armigeres</i>)	<i>Ar. (Arm.)</i>	<i>Lorrainea</i>	<i>Lo.</i>
<i>Ar. (Leicesteria)</i>	<i>Ar. (Lei.)</i>	<i>Mucidus</i> (<i>Mucidus</i>)	<i>Mu. (Muc.)</i>
<i>Ayurakitia</i>	<i>Ay.</i>	<i>Neomelaniconion</i>	<i>Ne.</i>
<i>Borichinda</i>	<i>Bc.</i>	<i>Ochlerotatus</i> (<i>Empihals</i>)	<i>Oc. (Emp.)</i>
<i>Bothaella</i>	<i>Bo.</i>	<i>Paraedes</i>	<i>Pr.</i>
<i>Bruceharrisonius</i>	<i>Br.</i>	<i>Petermattinglyius</i> (<i>Aglaonotus</i>)	<i>Pe. (Agl.)</i>
<i>Canraedes</i>	<i>Ca.</i>	<i>Pe. (Petermattinglyius)</i>	<i>Pe. (Pet.)</i>
<i>Christophersiomyia</i>	<i>Cr.</i>	<i>Phagomyia</i>	<i>Ph.</i>
<i>Collessius</i> (<i>Alloeoemyia</i>)	<i>Co. (Alo.)</i>	<i>Rhinoskusea</i>	<i>Rh.</i>
<i>Co. (Collessius)</i>	<i>Co. (Col.)</i>	<i>Scutomyia</i>	<i>Sc.</i>
<i>Danielsia</i>	<i>Dn.</i>	<i>Stegomyia</i> (<i>Heteraspidion</i>)	<i>St. (Het.)</i>
<i>Downsiomyia</i>	<i>Do.</i>	<i>St. (Huangmyia)</i>	<i>St. (Hua.)</i>
<i>Edwardsaedes</i>	<i>Ed.</i>	<i>St. (Stegomyia)</i>	<i>St. (Stg.)</i>
<i>Finlaya</i>	<i>Fl.</i>	<i>St. (Xyele)</i>	<i>St. (Xye.)</i>
<i>Fredwardsius</i>	<i>Fr.</i>	<i>Tanakaius</i>	<i>Ta.</i>
<i>Gilesius</i>	<i>Gi.</i>	<i>Tewarius</i>	<i>Te.</i>
<i>Heizmannia</i> (<i>Heizmannia</i>)	<i>Hs. (Hez.)</i>	<i>Udaya</i>	<i>Ud.</i>
<i>Hs. (Mattinglyia)</i>	<i>Hs. (Mat.)</i>	<i>Verrallina</i> (<i>Harbachius</i>)	<i>Ve. (Har.)</i>
<i>Himalaius</i>	<i>Hi.</i>	<i>Ve. (Neomacleaya)</i>	<i>Ve. (Nma.)</i>
<i>Hopkinsius</i> (<i>Yamada</i>)	<i>Hk. (Yam.)</i>	<i>Ve. (Verrallina)</i>	<i>Ve. (Ver.)</i>
<i>Hulecoeteomyia</i>	<i>Hl.</i>	<i>Zeugomyia</i>	<i>Ze.</i>
<i>Isoaedes</i>	<i>Ia.</i>		

Table 3
Checklist of known species of tribe Aedini in Thailand, with new and old generic and subgeneric classifications.

Species	New arrangement	Old arrangement
<i>achaetae</i> (Leicester, 1908)		<i>Heizmannia</i> (<i>Mattinglyia</i>) <i>achaetae</i>
<i>adusta</i> (Laffoon, 1946)		<i>Verrallina</i> (<i>Neomacleaya</i>) <i>adusta</i>
<i>aegypti</i> (Linnaeus, 1762)	<i>Stegomyia</i> (<i>Stegomyia</i>)	<i>Aedes</i> (<i>Stegomyia</i>) <i>aegypti</i>
<i>albocinctus</i> (Barraud, 1924)	<i>Hopkinsius</i> (<i>Yamada</i>)	<i>Ochlerotatus</i> (<i>Finlaya</i>) <i>albocinctus</i>
<i>albolateralis</i> (Theobald, 1908)	<i>Downsiomyia</i>	<i>Ochlerotatus</i> (<i>Finlaya</i>) <i>albolateralis</i>
<i>albolineata</i> Theobald, 1904	<i>Scutomyia</i>	<i>Aedes</i> (<i>Scutomyia</i>) <i>albolineatus</i>
<i>albonivea</i> (Barraud, 1934)	<i>Downsiomyia</i>	<i>Ochlerotatus</i> (<i>Finlaya</i>) <i>alboniveus</i>
<i>albopicta</i> (Skuse, 1895)	<i>Stegomyia</i> (subgenus unassigned)	<i>Aedes</i> (<i>Stegomyia</i>) <i>albopictus</i>
<i>alboscuteallatus</i> (Theobald, 1905)	<i>Aedimorphus</i>	<i>Aedes</i> (<i>Aedimorphus</i>) <i>alboscuteallatus</i>
<i>albotaeeniata</i> Leicester, 1904	<i>Danielsia</i>	<i>Ochlerotatus</i> (<i>Finlaya</i>) <i>albotaeeniatus</i>
<i>amesii</i> (Ludlow, 1903)	<i>Lorrainea</i>	<i>Aedes</i> (<i>Lorrainea</i>) <i>amesii</i>
<i>andamanensis</i> (Edwards, 1922)		<i>Verrallina</i> (<i>Neomacleaya</i>) <i>andamanensis</i>
<i>annandalei</i> Theobald, 1910	<i>Stegomyia</i> (<i>Heteraspidion</i>)	<i>Aedes</i> (<i>Stegomyia</i>) <i>annandalei</i>
<i>annulipalpis</i> (Theobald, 1910)		<i>Armigeres</i> (<i>Leicesteria</i>) <i>annulipalpis</i>
<i>annulirostris</i> (Theobald, 1905)	<i>Christophersomyia</i>	<i>Aedes</i> (<i>Christophersomyia</i>) <i>annulirostris</i>
<i>annulitarsis</i> (Leicester, 1908)		<i>Armigeres</i> (<i>Leicesteria</i>) <i>annulitarsis</i>
<i>Ar. sp. nr. kuchingensis</i>		<i>Armigeres</i> (<i>Armigeres</i>) sp. nr. <i>kuchingensis</i> 1
<i>Ar. species 1</i>		<i>Armigeres</i> (<i>Armigeres</i>) species 1
<i>argyrurus</i> (Edwards, 1934)		<i>Udaya argyrurus</i>
<i>assamensis</i> (Theobald, 1908)	<i>Phagomyia</i>	<i>Ochlerotatus</i> (<i>Finlaya</i>) <i>assamensis</i>

<i>atria</i> (Barraud, 1928)		<i>Verrallina</i> (<i>Neomacleaya</i>) <i>atria</i>
<i>aureochaeta</i> (Leicester, 1908)		<i>Heizmannia</i> (<i>Heizmannia</i>) <i>aureochaeta</i>
<i>aureolineatus</i> (Leicester, 1908)		<i>Armigeres</i> (<i>Armigeres</i>) <i>aureolineatus</i>
<i>balteatus</i> Macdonald, 1960		<i>Armigeres</i> (<i>Leicesteria</i>) <i>balteatus</i>
<i>bhayungi</i> Thurman and Thurman, 1958		<i>Armigeres</i> (<i>Armigeres</i>) <i>bhayungi</i>
<i>butleri</i> (Theobald, 1901)		<i>Verrallina</i> (<i>Verrallina</i>) <i>butleri</i>
<i>caecus</i> (Theobald, 1901)	<i>Aedimorphus</i>	<i>Aedes</i> (<i>Aedimorphus</i>) <i>caecus</i>
<i>catesi</i> (Lien, 1968)		<i>Heizmannia</i> (<i>Mattinglyia</i>) <i>catesi</i>
<i>cavaticus</i> (Reinert, 1979)	<i>Isoaedes</i>	<i>Aedes</i> (<i>Isoaedes</i>) <i>cavaticus</i>
<i>cavernicola</i> Rattanarithikul and Harbach, 2007		<i>Borichinda</i> <i>cavernicola</i>
<i>chengi</i> Lien, 1968		<i>Heizmannia</i> (<i>Heizmannia</i>) <i>chengi</i>
<i>christophersi</i> (Edwards, 1922)	<i>Bruceharrisonius</i>	<i>Aedes</i> (<i>Finlaya</i>) <i>christophersi</i>
<i>chrysolineata</i> (Theobald, 1907)	<i>Hulecoeteomyia</i>	<i>Ochlerotatus</i> (<i>Finlaya</i>) <i>chrysolineatus</i>
<i>cingulatus</i> (Leicester, 1908)		<i>Armigeres</i> (<i>Leicesteria</i>) <i>cingulatus</i>
<i>clavata</i> (Barraud, 1931)		<i>Verrallina</i> (<i>Neomacleaya</i>) <i>clavata</i>
Co. species 1	<i>Collessius</i> (<i>Alloeomyia</i>)	<i>Ochlerotatus</i> (<i>Finlaya</i>) Pseudotaeniatus Group
Co. species 2	<i>Collessius</i> (<i>Collessius</i>)	<i>Ochlerotatus</i> (<i>Finlaya</i>) Pseudotaeniatus Group
<i>communis</i> (Leicester, 1908)		<i>Heizmannia</i> (<i>Heizmannia</i>) <i>communis</i>
<i>complex</i> (Theobald, 1910)		<i>Heizmannia</i> (<i>Heizmannia</i>) <i>complex</i>
<i>confusus</i> Edwards, 1915		<i>Armigeres</i> (<i>Armigeres</i>) <i>confusus</i>
<i>covelli</i> Barraud, 1929		<i>Heizmannia</i> (<i>Heizmannia</i>) <i>covelli</i>
<i>craggi</i> Barraud, 1923	<i>Stegomyia</i> (<i>Heteraspidion</i>)	<i>Aedes</i> (<i>Stegomyia</i>) <i>craggi</i>
<i>cretata</i> (Delfinado, 1967)		<i>Verrallina</i> (<i>Neomacleaya</i>) <i>cretata</i>
<i>cyrtolabis</i> (Edwards, 1928)		<i>Verrallina</i> (<i>Neomacleaya</i>) <i>cyrtolabis</i>

Table 3 (continued).

Species	New arrangement	Old arrangement
<i>culicinus</i> Edwards, 1922	<i>Aedimorphus</i>	<i>Aedes (Aedimorphus) culicinus</i>
<i>demeilloni</i> Mattingly, 1970		<i>Heizmannia (Heizmannia) demeilloni</i>
<i>dentatus</i> Barraud, 1927		<i>Armigeres (Leicesteria) dentatus</i>
<i>desmotes</i> Giles, 1904	<i>Stegomyia</i> (Xyle)	<i>Aedes (Stegomyia) desmotes</i>
<i>digitatus</i> (Edwards, 1914)		<i>Armigeres (Leicesteria) digitatus</i>
<i>dissimilis</i> (Leicester, 1908)	<i>Kenknightsia</i>	<i>Ochlerotatus (Kenknightsia) dissimilis</i>
<i>Do. species 1</i>	<i>Downsiomyia</i>	<i>Ochlerotatus (Finlaya) Niveus Group</i>
<i>dolichocephalus</i> (Leicester, 1908)		<i>Armigeres (Leicesteria) dolichocephalus</i>
<i>dux</i> (Dyar and Shannon, 1925)		<i>Verrallina (Verrallina) dux</i>
<i>eldridgei</i> (Reinert, 1973)	<i>Bothaella</i>	<i>Aedes (Bothaella) eldridgei</i>
<i>elsiae</i> (Barraud, 1923)	<i>Collessius (Collessius)</i>	<i>Ochlerotatus (Finlaya) elsiae</i>
<i>feegradei</i> (Barraud, 1934)	<i>Phagomyia</i>	<i>Ochlerotatus (Finlaya) feegradei</i>
<i>flavipennis</i> Giles, 1904	<i>Finlaya</i>	<i>Ochlerotatus (Finlaya) flavipennis</i>
<i>flavus</i> (Leicester, 1908)		<i>Armigeres (Leicesteria) flavus</i>
<i>foliatus</i> Brug, 1931		<i>Armigeres (Armigeres) foliatus</i>
<i>formosensis</i> (Yamada, 1921)	<i>Hulecoeteomyia</i>	<i>Ochlerotatus (Finlaya) formosensis</i>
<i>franciscoi</i> (Mattingly, 1959)	<i>Petermattinglyius (Petermattinglyius)</i>	<i>Aedes (Diceromyia) franciscoi</i>
<i>fumida</i> (Edwards, 1928)	<i>Lorrainea</i>	<i>Aedes (Lorrainea) fumida</i>
<i>ganapathi</i> (Colless, 1958)	<i>Downsiomyia</i>	<i>Ochlerotatus (Finlaya) ganapathi</i>
<i>gardnerii imitator</i> Leicester, 1908	<i>Stegomyia</i> (subgenus unassigned)	<i>Aedes (Stegomyia) gardnerii imitator</i>
<i>gibbosa</i> (Delfinado, 1967)		<i>Verrallina (Neomacleaya) gibbosa</i>

<i>gilli</i> (Barraud, 1924)	Himalaius	<i>Ochlerotatus (Finlaya) gilli</i>
<i>gracilis</i> Leicester, 1908	Bruceharrisonius	<i>Zeugomyia gracilis</i>
<i>greeni</i> (Theobald, 1903)		<i>Aedes (Finlaya) greeni</i>
<i>griffithi</i> Thurman, 1954		<i>Ayurakitia griffithi</i>
<i>harbachi</i> (Reinert, 1990)	Kenknightsia	<i>Ochlerotatus (Kenknightsia) harbachi</i>
<i>harinasutai</i> (Knight, 1978)	Downsiomyia	<i>Ochlerotatus (Finlaya) harinasutai</i>
<i>harveyi</i> (Barraud, 1923)	Hulecoeteomyia	<i>Ochlerotatus (Finlaya) harveyi</i>
<i>helenae</i> (Reinert, 1973)	Bothaella	<i>Aedes (Bothaella) helenae</i>
<i>hispida</i> (Delfinado, 1967)		<i>Verrallina (Neomacleaya) hispida</i>
<i>ibis</i> (Barraud, 1931)	Christophersiomyia	<i>Aedes (Christophersiomyia) ibis</i>
<i>imprimens</i> (Walker, 1860)	Edwardsaedes	<i>Aedes (Edwardsaedes) imprimens</i>
<i>incerta</i> (Edwards, 1922)		<i>Verrallina (Neomacleaya) incerta</i>
<i>inchoatus</i> Barraud, 1927		<i>Armigeres (Leicesteria) inchoatus</i>
<i>indecorabilis</i> (Leicester, 1908)		<i>Verrallina (Harbachi) indecorabilis</i>
<i>indonesiae</i> (Mattingly, 1958)	Canraeades	<i>Aedes (Canraeades) indonesiae</i>
<i>inermis</i> (Colless, 1958)	Downsiomyia	<i>Ochlerotatus (Finlaya) inermis</i>
<i>iyengari</i> (Edwards, 1923)	Petermattinglyius (Petermattinglyius)	<i>Aedes (Diceromyia) iyengari</i>
<i>jugraensis</i> (Leicester, 1908)		<i>Armigeres (Armigeres) jugraensis</i>
<i>jugraensis</i> (Leicester, 1908)	Hulecoeteomyia	<i>Ochlerotatus (Finlaya) jugraensis</i>
<i>kesseli</i> Ramalingam, 1987		<i>Armigeres (Armigeres) kesseli</i>
<i>khazani</i> (Edwards, 1922)	Phagomyia	<i>Ochlerotatus (Finlaya) khazani</i>
<i>kohkutensis</i> (Mattingly, 1958)	Canraeades	<i>Aedes (Canraeades) kohkutensis</i>
<i>kuchingensis</i> Edwards, 1915		<i>Armigeres (Armigeres) kuchingensis</i>
<i>laniger</i> (Wiedemann, 1820)	Mucidus (Mucidus)	<i>Ochlerotatus (Mucidus) laniger</i>

Table 3 (continued).

Species	New arrangement	Old arrangement
<i>latipennis</i> (Delfinado, 1967)		<i>Verrallina (Neomacleaya) latipennis</i>
<i>leonis</i> (Colless, 1958)	<i>Downsiomyia</i>	<i>Ochlerotatus (Finlaya) leonis</i>
<i>lineatopenne</i> (Ludlow, 1905)	<i>Neomelaniconion</i>	<i>Aedes (Neomelaniconion) lineatopennis</i>
<i>litorea</i> (Colless, 1958)	<i>Downsiomyia</i>	<i>Ochlerotatus (Finlaya) litoreus</i>
<i>longipalpis</i> (Leicester, 1904)		<i>Armigeres (Leicesteria) longipalpis</i>
<i>longirostris</i> (Leicester, 1908)	<i>Rhinoskusea</i>	<i>Ochlerotatus (Rhinoskusea) longirostris</i>
<i>lophoventralis</i> (Theobald, 1910)	<i>Phagomyia</i>	<i>Ochlerotatus (Finlaya) lophoventralis</i>
<i>lugubris</i> (Barraud, 1928)		<i>Verrallina (Verrallina) lugubris</i>
<i>macdonaldi</i> Mattingly, 1957		<i>Heizmannia (Heizmannia) macdonaldi</i>
<i>macfarlanei</i> (Edwards, 1914)	<i>Collessius (Collessius)</i>	<i>Ochlerotatus (Finlaya) macfarlanei</i>
<i>magnus</i> (Theobald, 1908)		<i>Armigeres (Leicesteria) magnus</i>
<i>malayensis</i> (Colless, 1962)	<i>Stegomyia</i> (subgenus unassigned)	<i>Aedes (Stegomyia) malayensis</i>
<i>malayi</i> (Theobald, 1901)		<i>Armigeres (Armigeres) malayi</i>
<i>malikuli</i> (Huang, 1973)	<i>Stegomyia (Huangmyia)</i>	<i>Aedes (Stegomyia) malikuli</i>
<i>mattinglyi</i> Thurman, 1959		<i>Heizmannia (Heizmannia) mattinglyi</i>
<i>maximus</i> Edwards, 1922		<i>Armigeres (Armigeres) maximus</i>
<i>mediolineatus</i> (Theobald, 1901)	<i>Aedimorphus</i>	<i>Aedes (Aedimorphus) mediolineatus</i>
<i>mikrokopion</i> (Knight and Harrison, 1988)	<i>Downsiomyia</i>	<i>Ochlerotatus (Finlaya) mikrokopion</i>
<i>moultoni</i> Edwards, 1914		<i>Armigeres (Armigeres) moultoni</i>
<i>nipponica</i> (LaCasse and Yamaguti, 1948)	<i>Downsiomyia</i>	<i>Ochlerotatus (Finlaya) nipponicus</i>
<i>niveoides</i> (Barraud, 1934)	<i>Downsiomyia</i>	<i>Ochlerotatus (Finlaya) niveoides</i>
<i>notabilis</i> (Delfinado, 1967)		<i>Verrallina (Neomacleaya) notabilis</i>

<i>novalbopicta</i> (Barraud, 1931)	<i>Stegomyia</i> (subgenus unassigned)	<i>Aedes</i> (<i>Stegomyia</i>) <i>novalbopictus</i>
<i>novonivea</i> (Barraud, 1934)	<i>Downsiomyia</i>	<i>Ochlerotatus</i> (<i>Finlaya</i>) <i>novoniveus</i>
<i>omissus</i> (Edwards, 1914)		<i>Armigeres</i> (<i>Leicesteria</i>) <i>omissus</i>
<i>orbitae</i> (Edwards, 1922)	<i>Aedimorphus</i>	<i>Aedes</i> (<i>Aedimorphus</i>) <i>orbitae</i>
<i>ostentatio</i> (Leicester, 1908)	<i>Paraedes</i>	<i>Aedes</i> (<i>Paraedes</i>) <i>ostentatio</i>
<i>pallidostriatus</i> (Theobald, 1907)	<i>Aedimorphus</i>	<i>Aedes</i> (<i>Aedimorphus</i>) <i>pallidostriatus</i>
<i>pallirostris</i> (Edwards, 1922)	<i>Hulecoeteomyia</i>	<i>Ochlerotatus</i> (<i>Finlaya</i>) <i>pallirostris</i>
<i>pampangensis</i> (Ludlow, 1905)	<i>Aedimorphus</i>	<i>Aedes</i> (<i>Aedimorphus</i>) <i>pampangensis</i>
<i>patriciae</i> (Mattingly, 1954)	<i>Stegomyia</i> (subgenus unassigned)	<i>Aedes</i> (<i>Stegomyia</i>) <i>patriciae</i>
<i>pectinatus</i> (Edwards, 1914)		<i>Armigeres</i> (<i>Leicesteria</i>) <i>pectinatus</i>
<i>pendulus</i> (Edwards, 1914)		<i>Armigeres</i> (<i>Leicesteria</i>) <i>pendulus</i>
<i>perplexa</i> Leicester, 1908	<i>Stegomyia</i> (<i>Huangmyia</i>)	<i>Aedes</i> (<i>Stegomyia</i>) <i>perplexus</i>
<i>persimilis</i> Mattingly, 1970		<i>Heizmannia</i> (<i>Heizmannia</i>) <i>persimilis</i>
<i>pexa</i> (Colless, 1958)	<i>Downsiomyia</i>	<i>Ochlerotatus</i> (<i>Finlaya</i>) <i>pexus</i>
<i>peytoni</i> (Reinert, 1972)		<i>Ayurakitia</i> <i>peytoni</i>
<i>phnoma</i> (Klein, 1973)		<i>Verrallina</i> (<i>Neomacleaya</i>) <i>phnoma</i>
<i>pipersalatus</i> (Giles, 1902)	<i>Aedimorphus</i>	<i>Aedes</i> (<i>Aedimorphus</i>) <i>pipersalatus</i>
<i>poicilia</i> Theobald, 1903	<i>Finlaya</i>	<i>Ochlerotatus</i> (<i>Finlaya</i>) <i>poicilius</i>
<i>prominens</i> (Barraud, 1923)	<i>Phagomyia</i>	<i>Ochlerotatus</i> (<i>Finlaya</i>) <i>prominens</i>
<i>propinqua</i> Mattingly, 1970		<i>Heizmannia</i> (<i>Heizmannia</i>) <i>propinqua</i>
<i>protuberans</i> (Delfinado, 1967)		<i>Verrallina</i> (<i>Neomacleaya</i>) <i>protuberans</i>
<i>proxima</i> Mattingly, 1970		<i>Heizmannia</i> (<i>Heizmannia</i>) <i>proxima</i>
<i>pseudalbopicta</i> Borel, 1928	<i>Stegomyia</i> (subgenus unassigned)	<i>Aedes</i> (<i>Stegomyia</i>) <i>pseudalbopictus</i>
<i>pseudodiurna</i> (Theobald, 1910)		<i>Verrallina</i> (<i>Neomacleaya</i>) <i>pseudodiurna</i>

Table 3 (continued).

Species	New arrangement	Old arrangement
<i>pseudonivea</i> (Theobald, 1905)	<i>Downsiomyia</i>	<i>Ochlerotatus (Finlaya) pseudoniveus</i>
<i>pseudonummatus</i> (Reinert, 1973)	<i>Tewarius</i>	<i>Aedes (Diceromyia) pseudonummatus</i>
<i>pseudotaeniatus</i> (Giles, 1901)	<i>Collessius (Alloeomyia)</i>	<i>Ochlerotatus (Finlaya) pseudotaeniatus</i>
<i>pulchriventer</i> (Giles, 1901)	<i>Gilesius</i>	<i>Ochlerotatus (Finlaya) pulchriventer</i>
<i>quasiferinus</i> (Mattingly, 1961)	<i>Mucidus</i>	<i>Ochlerotatus (Mucidus) quasiferinus</i>
<i>reidi</i> Mattingly, 1957		<i>Heizmannia (Heizmannia) reidi</i>
<i>reinerti</i> (Rattananarithikul and Harrison, 1988)	<i>Hulecoeteomyia</i>	<i>Ochlerotatus (Finlaya) reinerti</i>
<i>saxicola</i> (Edwards, 1922)	<i>Hulecoeteomyia</i>	<i>Ochlerotatus (Finlaya) saxicola</i>
<i>scanloni</i> Mattingly, 1970		<i>Heizmannia (Heizmannia) scanloni</i>
<i>scanloni</i> (Reinert, 1970)	<i>Petermattinglyius (Petermattinglyius) scanloni</i>	<i>Aedes (Diceromyia) scanloni</i>
<i>scintillans</i> Ludlow, 1905		<i>Heizmannia (Heizmannia) scintillans</i>
<i>seatoi</i> (Huang, 1969)	<i>Stegomyia</i> (subgenus unassigned)	<i>Aedes (Stegomyia) seatoi</i>
<i>shorti</i> (Barraud, 1923)	<i>Collessius (Collessius)</i>	<i>Ochlerotatus (Finlaya) shorti</i>
<i>simlensis</i> (Edwards, 1922)	<i>Himalaius</i>	<i>Ochlerotatus (Finlaya) simlensis</i>
<i>sohni</i> (Reinert, 1974)		<i>Verrallina (Neomacleaya) sohni</i>
<i>subalbatus</i> (Coquillett, 1898)		<i>Armigeres (Armigeres) subalbatus</i>
<i>subnivea</i> (Edwards, 1922)	<i>Downsiomyia</i>	<i>Ochlerotatus (Finlaya) subniveus</i>
<i>taiwanensis</i> Lien, 1968		<i>Heizmannia (Heizmannia) taiwanensis</i>
<i>thailandensis</i> (Reinert, 1976)	<i>Paraedes</i>	<i>Aedes (Paraedes) thailandensis</i>
<i>thelmae</i> Mattingly, 1970		<i>Heizmannia (Heizmannia) thelmae</i>
<i>theobaldi</i> Barraud, 1934		<i>Armigeres (Armigeres) theobaldi</i>

<i>thomsoni</i> (Theobald, 1905)	<i>Christophersomyia</i>	<i>Aedes</i> (<i>Christophersomyia</i>) <i>thomsoni</i>
<i>togoi</i> (Theobald, 1907)	<i>Tanakaius</i>	<i>Ochlerotatus</i> (<i>Finlaya</i>) <i>togoi</i>
<i>torosa</i> (Delfinado, 1967)		<i>Verrallina</i> (<i>Neomacleaya</i>) <i>torosa</i>
<i>traubi</i> Macdonald, 1960		<i>Armigeres</i> (<i>Leicesteria</i>) <i>traubi</i>
<i>treubi</i> (de Meijere, 1910)	<i>Alanstonea</i>	<i>Aedes</i> (<i>Alanstonea</i>) <i>treubi</i>
<i>uncus</i> (Theobald, 1901)		<i>Verrallina</i> (<i>Neomacleaya</i>) <i>uncus</i>
<i>unicinctus</i> (Edwards, 1922)	<i>Jihlienius</i>	<i>Ochlerotatus</i> (<i>Finlaya</i>) <i>unicinctus</i>
<i>vallistris</i> (Barraud, 1928)		<i>Verrallina</i> (<i>Neomacleaya</i>) <i>vallistris</i>
<i>vana</i> (Colless, 1958)	<i>Downsiomyia</i>	<i>Ochlerotatus</i> (<i>Finlaya</i>) <i>vanus</i>
<i>vexans</i> (Meigen, 1830)	<i>Aedimorphus</i>	<i>Aedes</i> (<i>Aedimorphus</i>) <i>vexans</i>
<i>vigilax</i> (Skuse, 1889)	<i>Ochlerotatus</i> (<i>Empihals</i>)	<i>Ochlerotatus</i> (<i>Ochlerotatus</i>) <i>vigilax</i>
<i>vimoli</i> Thurman and Thurman, 1958		<i>Armigeres</i> (<i>Leicesteria</i>) <i>vimoli</i>
<i>vittatus</i> (Bigot, 1861)	<i>Fredwardsius</i>	<i>Aedes</i> (<i>Fredwardsius</i>) <i>vittatus</i>
<i>w-alba</i> Theobald, 1905	<i>Stegomyia</i> (subgenus unassigned)	<i>Aedes</i> (<i>Stegomyia</i>) <i>w-albus</i>
<i>whartoni</i> (Mattingly, 1965)	<i>Petermattinglyius</i> (<i>Aglaonotus</i>)	<i>Aedes</i> (<i>Diceromyia</i>) <i>whartoni</i>
<i>yusafi</i> (Barraud, 1931)		<i>Verrallina</i> (<i>Harbachius</i>) <i>yusafi</i>
Unplaced species 1		
Unplaced species 2		

Table 4
Distributions and number of species of tribe Aedini in Thailand, the Orient,
and elsewhere.

Genus / species	Thailand subregions ^a						Oriental	Elsewhere
	1	2	3	4	5	6		
1. Aedimorphus (9)								
1. <i>alboscuteatus</i> (Theobald, 1905)	+	+	+	-	-	+	+	+
2. <i>caecus</i> (Theobald, 1901)	+	+	+	-	-	+	+	-
3. <i>culicinus</i> (Edwards, 1922)	-	+	-	-	-	+	+	-
4. <i>mediolineatus</i> (Theobald, 1901)	+	+	-	+	+	+	+	-
5. <i>orbitae</i> (Edwards, 1922)	-	-	-	+	-	+	+	-
6. <i>pallidostriatus</i> (Theobald, 1907)	-	+	-	-	-	-	+	-
7. <i>pampangensis</i> (Ludlow, 1905)	-	-	+	-	-	+	+	-
8. <i>pipersalatus</i> (Giles, 1902)	-	+	-	-	-	-	+	-
9. <i>vexans</i> (Meigen, 1830)	+	+	+	+	+	+	+	+
2. Alanstonea (1)								
10. <i>treubi</i> (de Meijere, 1910)	-	-	+	-	-	-	+	-
3. Armigeres (Armigeres) (14)								
11. <i>aureolineatus</i> (Leicester, 1908)	+	+	+	+	-	-	+	-
12. <i>bhayungi</i> Thurman and Thurman, 1958	+	-	-	-	-	-	-	-
13. <i>confusus</i> Edwards, 1915	+	-	-	-	-	-	+	-
14. <i>foliatus</i> Brug, 1931	-	+	-	-	-	-	+	-
15. <i>jugraensis</i> (Leicester, 1908)	-	+	+	-	-	-	+	-
16. <i>kesseli</i> Ramalingam, 1987	+	+	+	+	+	+	+	-
17. <i>kuchingensis</i> Edwards, 1915	+	-	+	-	-	-	+	-
18. <i>malayi</i> (Theobald, 1901)	+	+	+	-	+	+	+	-
19. <i>maximus</i> Edwards, 1922	-	-	+	-	-	-	+	-
20. <i>moultoni</i> Edwards, 1914	+	-	+	-	-	-	+	-
21. <i>subalbatus</i> (Coquillett, 1898)	+	+	+	+	+	+	+	+
22. <i>theobaldi</i> Barraud, 1934	+	+	+	-	-	-	+	-
23. <i>Ar. species 1</i>	-	-	+	-	-	-	-	-
24. <i>Ar. sp. nr. kuchingensis</i> (species 1)	-	+	-	-	-	-	-	-
Armigeres (Leicesteria) (16)								
25. <i>annulipalpis</i> (Theobald, 1910)	-	+	-	-	-	-	+	+
26. <i>annulitarsis</i> (Leicester, 1908)	+	+	+	-	+	+	+	+
27. <i>balteatus</i> Macdonald, 1960	-	-	+	-	-	-	+	-
28. <i>cingulatus</i> (Leicester, 1908)	+	-	-	-	-	+	+	-

Table 4 (continued).

Genus / species	Thailand subregions ^a						Oriental	Elsewhere
	1	2	3	4	5	6		
29. <i>dentatus</i> Barraud, 1927	+	+	+	-	-	-	+	-
30. <i>digitatus</i> (Edwards, 1914)	+	+	+	-	-	+	+	-
31. <i>dolichocephalus</i> (Leicester, 1908)	-	+	+	-	-	+	+	-
32. <i>flavus</i> (Leicester, 1908)	+	+	+	+	+	+	+	-
33. <i>inchoatus</i> Barraud, 1927	-	+	+	-	-	-	+	-
34. <i>longipalpis</i> (Leicester, 1904)	+	+	+	-	-	+	+	-
35. <i>magnus</i> (Theobald, 1908)	+	+	+	+	-	+	+	-
36. <i>omissus</i> (Edwards, 1914)	+	+	+	-	-	-	+	-
37. <i>pectinatus</i> (Edwards, 1914)	-	+	?	-	-	-	+	-
38. <i>pendulus</i> (Edwards, 1914)	-	-	+	-	-	-	+	-
39. <i>traubi</i> Macdonald, 1960	-	+	+	-	-	-	+	-
40. <i>vimoli</i> Thurman and Thurman, 1958	+	-	-	-	-	-	-	-
4. Ayurakitia (2)								
41. <i>griffithi</i> Thurman, 1954	+	+	-	-	-	-	-	-
42. <i>peytoni</i> (Reinert, 1972)	-	-	+	-	-	-	-	-
5. Borichinda (1)								
43. <i>cavernicola</i> Rattanarithikul and Harbach, 2007	+	-	-	-	-	+	-	-
6. Bothaella (2)								
44. <i>eldridgei</i> (Reinert, 1973)	+	+	+	+	-	-	-	-
45. <i>helenae</i> (Reinert, 1973)	+	+	-	-	-	?	-	-
7. Bruceharrisonius (2)								
46. <i>christophersi</i> (Edwards, 1922)	+	-	+	-	-	+	+	-
47. <i>greenii</i> (Theobald, 1903)	+	+	+	+	-	+	+	-
8. Cancraedes (2)								
48. <i>indonesiae</i> (Mattingly, 1958)	-	-	-	?	?	-	+	-
49. <i>kohkutensis</i> (Mattingly, 1958)	-	-	-	?	?	-	+	-
9. Christophersiomyia (3)								
50. <i>annulirostris</i> (Theobald, 1905)	+	+	+	+	-	-	+	-
51. <i>ibis</i> (Barraud, 1931)	+	+	+	-	-	-	+	-
52. <i>thomsoni</i> (Theobald, 1905)	+	-	+	-	-	-	+	?
10. Collessius (Alloeomyia) (2)								
53. <i>pseudotaeniatus</i> (Giles, 1901)	+	+	+	-	-	+	+	-

Table 4 (continued).

Genus / species	Thailand subregions ^a						Oriental	Elsewhere
	1	2	3	4	5	6		
54. <i>Co.</i> species 1	-	+	-	-	-	-	-	-
<i>Collessius</i> (<i>Collessius</i>) (4)								
55. <i>elsiae</i> (Barraud, 1923)	+	+	-	-	-	+	+	-
56. <i>macfarlanei</i> (Edwards, 1914)	+	+	+	+	+	+	+	-
57. <i>shortti</i> (Barraud, 1923)	+	-	+	-	-	-	+	-
58. <i>Co.</i> species 2	+	-	-	-	-	-	-	-
11. <i>Danielsia</i> (1)								
59. <i>albotaeniata</i> Leicester, 1904	+	+	+	+	-	+	+	+
12. <i>Downsiomyia</i> (17)								
60. <i>albolateralis</i> (Theobald, 1908)	+	+	+	+	+	+	+	-
61. <i>albonivea</i> (Barraud, 1934)	+	-	-	+	-	+	+	-
62. <i>ganapathi</i> (Colless, 1958)	+	-	+	+	-	-	+	-
63. <i>harinasutai</i> (Knight, 1978)	-	+	+	-	-	-	?	-
64. <i>inermis</i> (Colless, 1958)	+	-	+	-	-	+	+	-
65. <i>leonis</i> (Colless, 1958)	-	-	+	-	-	+	+	-
66. <i>litorea</i> (Colless, 1958)	+	+	+	-	-	-	+	-
67. <i>mikrokopion</i> (Knight and Harrison, 1988)	-	+	-	-	-	-	-	-
68. <i>nipponica</i> (LaCasse and Yamaguti, 1948)	+	-	-	-	-	-	-	+
69. <i>niveoides</i> (Barraud, 1934)	+	+	+	+	-	+	+	-
70. <i>novonivea</i> (Barraud, 1934)	+	-	+	+	-	+	+	-
71. <i>pexa</i> (Colless, 1958)	+	-	-	-	-	+	+	-
72. <i>pseudonivea</i> (Theobald, 1905)	+	-	+	-	-	-	+	-
73. <i>saperoi</i> (Knight, 1946)	+	-	-	-	-	-	+	-
74. <i>subnivea</i> (Edwards, 1922)	-	-	+	-	-	-	+	-
75. <i>vana</i> (Colless, 1958)	-	-	+	+	-	+	+	-
76. <i>Do.</i> species 1	+	+	-	-	-	-	-	-
13. <i>Edwardsaedes</i> (1)								
77. <i>imprimens</i> (Walker, 1860)	+	+	+	+	-	+	+	+
14. <i>Finlaya</i> (2)								
78. <i>flavipennis</i> Giles, 1904	+	+	+	-	-	-	+	-
79. <i>poicilia</i> Theobald, 1903	+	+	+	-	-	-	+	+
15. <i>Fredwardsius</i> (1)								
80. <i>vittatus</i> (Bigot, 1861)	+	+	+	+	+	+	+	+

Table 4 (continued).

Genus / species	Thailand subregions ^a						Oriental	Elsewhere
	1	2	3	4	5	6		
16. <i>Gilesius</i> (1)								
81. <i>pulchriventer</i> (Giles, 1901)	+	-	-	-	-	+	+	+
17. <i>Heizmannia</i> (<i>Heizmannia</i>) (16)								
82. <i>aureochaeta</i> (Leicester, 1908)	+	+	+	-	-	+	+	-
83. <i>chengi</i> Lien, 1968	-	-	+	-	-	+	+	-
84. <i>communis</i> (Leicester, 1908)	-	-	+	+	-	-	+	-
85. <i>complex</i> (Theobald, 1910)	+	-	+	-	-	+	+	-
86. <i>covelli</i> Barraud, 1929	+	-	-	+	-	-	+	-
87. <i>demeilloni</i> Mattingly, 1970	+	-	-	-	-	-	+	-
88. <i>macdonaldi</i> Mattingly, 1957	-	+	+	-	-	-	+	-
89. <i>mattinglyi</i> Thurman, 1959	+	-	-	-	-	+	+	-
90. <i>persimilis</i> Mattingly, 1970	+	+	+	+	-	+	+	-
91. <i>propinqua</i> Mattingly, 1970	-	-	-	+	-	-	+	-
92. <i>proxima</i> Mattingly, 1970	+	-	-	-	-	-	-	-
93. <i>reidi</i> Mattingly, 1957	+	+	+	+	-	+	+	-
94. <i>scanloni</i> Mattingly, 1970	+	-	-	-	-	-	-	-
95. <i>scintillans</i> Ludlow, 1905	+	+	+	+	-	+	+	-
96. <i>taiwanensis</i> Lien, 1968	-	-	+	-	-	-	+	-
97. <i>thelmae</i> Mattingly, 1970	-	-	+	-	-	-	-	-
<i>Heizmannia</i> (<i>Mattinglyia</i>) (2)								
98. <i>achaetae</i> (Leicester, 1908)	+	+	+	+	-	+	+	-
99. <i>catesi</i> (Lien, 1968)	-	+	+	-	-	-	+	-
18. <i>Himalaius</i> (2)								
100. <i>gilli</i> (Barraud, 1924)	+	-	-	-	-	-	+	-
101. <i>simlensis</i> (Edwards, 1922)	+	-	-	-	-	+	+	-
19. <i>Hopkinsius</i> (<i>Yamada</i>) (1)								
102. <i>albocinctus</i> (Barraud, 1924)	+	-	-	-	-	+	+	-
20. <i>Hulecoeteomyia</i> (7)								
103. <i>chrysolineata</i> (Theobald, 1907)	+	+	+	+	+	+	+	-
104. <i>formosensis</i> (Yamada, 1921)	+	+	+	+	+	+	+	-
105. <i>harveyi</i> (Barraud, 1923)	+	+	+	+	-	+	+	-
106. <i>jugraensis</i> Leicester, 1908	-	-	+	-	+	-	+	-
107. <i>pallirostris</i> (Edwards, 1922)	+	-	-	-	-	-	+	-

Table 4 (continued).

Genus / species	Thailand subregions ^a						Oriental	Elsewhere
	1	2	3	4	5	6		
108. <i>reinerti</i> (Rattanaarithikul and Harrison, 1988)	+	-	-	-	-	-	-	-
109. <i>saxicola</i> (Edwards, 1922)	+	+	+	+	-	+	+	-
21. <i>Isoaedes</i> (1)								
110. <i>cavaticus</i> (Reinert, 1979)	-	-	+	-	-	+	-	-
22. <i>Jihlienius</i> (1)								
111. <i>unicinctus</i> (Edwards, 1922)	+	-	-	+	-	+	+	-
23. <i>Kenknightsia</i> (2)								
112. <i>dissimilis</i> (Leicester, 1908)	+	+	+	+	-	+	+	+
113. <i>harbachi</i> (Reinert, 1990)	+	-	+	+	-	+	+	-
24. <i>Lorrainea</i> (2)								
114. <i>amesii</i> (Ludlow, 1903)	-	-	+	+	+	-	+	-
115. <i>fumida</i> (Edwards, 1928)	-	-	+	+	+	-	+	-
25. <i>Mucidus</i> (<i>Mucidus</i>) (2)								
116. <i>laniger</i> (Wiedemann, 1820)	-	-	+	-	-	-	+	-
117. <i>quasiferinus</i> (Mattingly, 1961)	+	+	-	-	-	-	+	-
26. <i>Neomelaniconion</i> (1)								
118. <i>lineatopenne</i> (Ludlow, 1905)	+	+	+	+	+	+	+	+
27. <i>Ochlerotatus</i> (<i>Empihals</i>) (1)								
119. <i>vigilax</i> (Skuse, 1889)	-	-	+	+	+	?	+	+
28. <i>Paraedes</i> (2)								
120. <i>ostentatio</i> (Leicester, 1908)	-	-	-	+	+	+	+	-
121. <i>thailandensis</i> (Reinert, 1981)	-	-	-	+	-	+	+	-
29. <i>Petermattinglyius</i> (<i>Aglaonotus</i>) (1)								
122. <i>whartoni</i> (Mattingly, 1965)	+	+	+	-	-	-	+	-
<i>Petermattinglyius</i> (<i>Petermattinglyius</i>) (3)								
123. <i>franciscoi</i> (Mattingly, 1959)	+	+	+	-	-	-	+	-
124. <i>iyengari</i> (Edwards, 1923)	+	-	-	-	-	-	+	-
125. <i>scanloni</i> (Reinert, 1970)	-	-	-	-	+	+	-	-
30. <i>Phagomyia</i> (5)								
126. <i>assamensis</i> (Theobald, 1908)	+	+	+	+	-	+	+	-
127. <i>feegradei</i> (Barraud, 1934)	+	-	+	+	-	-	+	-
128. <i>khazani</i> (Edwards, 1922)	-	+	+	+	-	+	+	-

Table 4 (continued).

Genus / species	Thailand subregions ^a						Oriental	Elsewhere
	1	2	3	4	5	6		
129. <i>lophoventralis</i> (Theobald, 1910)	+	-	-	-	+	+	+	-
130. <i>prominens</i> (Barraud, 1923)	+	+	+	-	-	+	+	-
31. <i>Rhinoscusea</i> (1)								
131. <i>longirostris</i> (Leicester, 1908)	-	-	+	+	+	-	+	+
32. <i>Scutomya</i> (1)								
132. <i>albolineata</i> Theobald, 1904	+	+	+	+	+	+	+	+
33. <i>Stegomyia</i> (<i>Heteraspidion</i>) (2)								
133. <i>annandalei</i> Theobald, 1910	+	+	+	+	+	+	+	-
134. <i>craggi</i> Barraud, 1923	+	+	-	-	-	-	+	-
<i>Stegomyia</i> (<i>Huangmyia</i>) (2)								
135. <i>malikuli</i> (Huang, 1973)	+	+	-	-	-	-	?	-
136. <i>perplexa</i> Leicester, 1908	+	+	+	+	-	+	+	-
<i>Stegomyia</i> (<i>Stegomyia</i>) (1)								
137. <i>aegypti</i> (Linnaeus, 1762)	+	+	+	+	+	+	+	+
<i>Stegomyia</i> (<i>Xyle</i>) (1)								
138. <i>desmotes</i> Giles, 1904	+	+	+	+	+	+	+	?
<i>Stegomyia</i> (unassigned to subgenus) (8)								
139. <i>albopicta</i> (Skuse, 1895)	+	+	+	+	+	+	+	+
140. <i>gardnerii imitator</i> Leicester, 1908	+	+	+	+	+	+	+	-
141. <i>malayensis</i> (Colless, 1962)	-	+	+	+	+	-	+	-
142. <i>novalbopicta</i> (Barraud, 1931)	+	-	-	-	+	-	+	-
143. <i>patriciae</i> (Mattingly, 1954)	+	+	+	-	-	+	+	-
144. <i>pseudalbopicta</i> Borel, 1928	+	+	+	-	+	-	+	-
145. <i>seatoi</i> (Huang, 1969)	+	+	+	+	+	-	-	-
146. <i>w-alba</i> Theobald, 1905	+	+	+	+	+	+	-	-
34. <i>Tanakaius</i> (1)								
147. <i>togoi</i> (Theobald, 1907)	-	-	+	+	-	-	+	+
35. <i>Tewarius</i> (1)								
148. <i>pseudonummatus</i> (Reinert, 1973)	+	-	+	-	-	+	-	-
36. <i>Udaya</i> (1)								
149. <i>argyrurus</i> (Edwards, 1934)	+	+	-	-	-	-	-	-
37. <i>Verrallina</i> (<i>Harbachius</i>) (2)								
150. <i>indecorabilis</i> Leicester, 1908	-	-	+	-	-	-	+	-

Table 4 (continued).

Genus / species	Thailand subregions ^a						Oriental	Elsewhere
	1	2	3	4	5	6		
151. <i>yusafi</i> (Barraud, 1931)	+	?	-	-	-	-	-	-
<i>Verrallina (Neomacleaya)</i> (18)								
152. <i>adusta</i> (Laffoon, 1946)	+	+	+	-	-	+	+	-
153. <i>andamanensis</i> (Edwards, 1922)	+	+	+	+	-	+	+	-
154. <i>atria</i> (Barraud, 1928)	+	+	+	-	+	+	-	-
155. <i>clavata</i> (Barraud, 1931)	-	-	+	+	+	+	+	-
156. <i>cretata</i> (Delfinado, 1967)	+	+	-	-	-	+	+	-
157. <i>cyrtolabis</i> (Edwards, 1928)	-	-	-	-	-	+	+	-
158. <i>gibbosa</i> (Delfinado, 1967)	-	-	+	-	+	-	+	-
159. <i>hispidata</i> (Delfinado, 1967)	+	-	-	-	-	+	?	-
160. <i>incerta</i> (Edwards, 1922)	-	-	+	-	-	+	+	-
161. <i>latipennis</i> (Delfinado, 1967)	-	-	+	+	-	-	-	-
162. <i>notabilis</i> (Delfinado, 1967)	-	-	+	+	-	-	-	-
163. <i>phnoma</i> (Klein, 1973)	-	-	+	+	-	-	+	-
164. <i>protuberans</i> (Delfinado, 1967)	-	-	-	-	-	+	?	-
165. <i>pseudodiurna</i> (Theobald, 1910)	+	-	-	-	-	+	?	-
166. <i>sohni</i> (Reinert, 1974)	-	-	+	-	-	-	+	-
167. <i>torosa</i> (Delfinado, 1967)	-	-	-	+	-	+	-	-
168. <i>uncus</i> (Theobald, 1901)	+	-	+	+	-	+	-	-
169. <i>vallistris</i> (Barraud, 1928)	+	-	-	-	-	+	+	-
<i>Verrallina (Verrallina)</i> (3)								
170. <i>butleri</i> (Theobald, 1901)	-	+	+	+	-	+	+	+
171. <i>dux</i> (Dyar and Shannon, 1925)	-	+	+	+	+	+	+	-
172. <i>lugubris</i> (Barraud, 1928)	-	-	-	+	+	-	+	-
38. <i>Zeugnomyia</i> (1)								
173. <i>gracilis</i> Leicester, 1908	-	-	+	-	-	-	+	-
Unplaced species (2)								
174. species 1	+	-	-	-	-	-	-	-
175. species 2	+	-	-	-	-	-	-	-

^aThe six subregions of Thailand were defined in Section I (Rattanaarithikul, 2005a).

Table 5 (continued).

	Container habitats																	
	Pond / lake																	
	Swamp																	
	Marsh / bog																	
	Ditch																	
	Pit / well																	
	Ground pool or puddle																	
	Flood pool																	
	Stream pool																	
	Stream margin																	
	Seep or seepage-spring																	
	Rice field																	
	Wheel track / tire depressions																	
	Elephant and other footprints																	
	Salt marsh																	
	Mangrove / Nipa swamp																	
	Crab hole																	
	Artificial container		+															
	Hollow log / log hole																	
	Rock pool																	
	Rock hole																	
	Cave seepage / drip pool																	
	Tree hole			+														
	Hole in stump / roots															+		
	Bamboo internode		+	+				+										+
	Bamboo stump				+			+	+	+								
	Bamboo cup					+		+	+	+								
	Bamboo split									+						+		+
	Allocasia / Colocasia axils				+													
	Pandanus axils								+									
	Ginger plant			+	+													
	Pineapple axils																	
	Pitcher plant																	
	Banana stump / axils																	
	Nipa axils																	
	Leaf axils																	
	Fallen leaf																	
	Coconut shell				+													+
	Coconut husk																	+
	<i>maximus</i> (unknown)																	
	<i>moultoni</i>																	
	<i>subalbatus</i>																	
	<i>theobaldi</i>																	
	<i>Ar. sp. nr. kuchingensis</i>																	
	<i>Ar. species 1</i>																	
	Armigeres (Leicesteria)																	
	<i>annulipalpis</i>																	
	<i>annulitarsis</i>																	
	<i>balteatus</i>																	
	<i>cingulatus</i> (unknown)																	
	<i>dentatus</i>																	
	<i>digitatus</i>																	
	<i>dolichocephalus</i>																	
	<i>flavus</i>																	
	<i>inchoatus</i>																	
	<i>longipalpis</i>																	
	<i>magnus</i>																	
	<i>omissus</i>																	
	<i>pectinatus</i>																	
	<i>pendulus</i>																	
	<i>traubi</i>																	
	<i>virmoli</i> (unknown)																	

Table 5 (continued).

	Ground water habitats														Container habitats																																					
	Pond / lake	Swamp	Marsh / bog	Ditch	Pit / well	Ground pool or puddle	Flood pool	Stream pool	Stream margin	Seep or seepage-spring	Rice field	Wheel track / tire depressions	Elephant and other footprints	Salt marsh	Mangrove / <i>Nipa</i> swamp	Crab hole	Artificial container	Hollow log / log hole	Rock pool	Rock hole	Cave seepage / drip pool	Tree hole	Hole in stump / roots	Bamboo internode	Bamboo stump	Bamboo cup	Bamboo split	<i>Allcasia</i> / <i>Colocasia</i> axils	<i>Pandanus</i> axils	Ginger plant	Pineapple axils	Pitcher plant	Banana stump / axils	<i>Nipa</i> axils	Leaf axils	Fallen leaf	Coconut shell	Coconut husk														
<i>quasiferinus</i>																																																				
Neomelaniconion																																																				
<i>lineatopenne</i>																																																				
Ochlerotatus (Empihals)																																																				
<i>vigilax</i>																																																				
Paraedes																																																				
<i>osteniatio</i>																																																				
<i>thailandensis</i>																																																				
Petermattinglyius (Aglaonotus)																																																				
<i>whartoni</i>																																																				
Petermattinglyius (Petermattinglyius)																																																				
<i>franciscoi</i>																																																				
<i>iyengari</i>																																																				
<i>scanloni</i> (unknown)																																																				
Phagomyia																																																				
<i>assamensis</i>																																																				
<i>feegradei</i>																																																				
<i>khazani</i>																																																				
<i>lophoventralis</i>																																																				
<i>prominens</i>																																																				
Rhinoskusea																																																				
<i>longirostris</i>																																																				

Table 6

Described and undescribed species representing new country records that were discovered during the Thai Mosquito Project and included or recognized for the first time in Sections I-VI.

Described species in Sections I-VI		Undescribed species in Sections I-VI	
<i>Lt. (Mlt.) vorax</i>	I, II	<i>An. (Ano.)</i> sp. nr. <i>gigas</i>	I, IV
<i>Hd. bailyi</i>	I, III	<i>Cx. (Ocu.)</i> sp. nr. <i>infula</i>	I, II
<i>Ur. (Pfc.) abstrusa</i>	I, III	<i>Ur. (Ura.)</i> species 1	I, III
<i>To. (Sua.) pseudoleucotarsis</i>	I, V	<i>Ur. (Ura.)</i> species 2	I, III
<i>To. (Top.) argyropalpis</i>	I, V	<i>Ur. (Ura.)</i> species 3	I, III
<i>To. (Top.) bifurcata</i>	V	<i>Ur. (Ura.)</i> species 4	I, III
<i>To. (Top.) gracilis</i>	I, V	<i>To. (Sua.)</i> sp. nr. <i>pseudoleucotarsis</i>	V
<i>To. (Top.) spathulirostris</i>	V	<i>To. (Top.) houghtoni</i> species 1	V
<i>To. (Top.) tenuis</i>	I, V	<i>To. (Top.) houghtoni</i> species 2	V
<i>To. (Top.) tipuliformis</i>	I, V	<i>To. (Top.)</i> sp nr. <i>tenuis</i>	V
<i>To. (Top.) unispinosa</i>	I, V	<i>Tp. (Rah.)</i> unassociated species 1	V
<i>To. (Top.) vijayae</i>	I, V	<i>Tp. (Rah.)</i> sp. nr. <i>aranoides</i> species 2	V
<i>Tx. (Tox.) amboinensis</i>	I, V	<i>Tx. (Tox.)</i> sp. nr. <i>albipes</i> = sp. 1 nr. <i>gravelyi</i>	I, V
<i>Ar. (Arm.) confusus</i>	I, VI	<i>Tx. (Tox.)</i> species 2 nr. <i>manopi</i>	V
<i>Ar. (Arm.) foliatus</i>	I, VI	<i>Tx. (Tox.)</i> species 3 nr. <i>magnificus</i>	V
<i>Ar. (Lei.) pendulus</i>	I, VI	<i>Tx. (Tox.)</i> species 4 nr. <i>leicesteri</i>	V
<i>Ar. (Lei.) traubi</i>	I, VI	<i>Ar. (Arm.)</i> sp. nr. <i>kuchingensis</i>	VI
<i>Bc. cavernicola</i>	VI	<i>Ar. (Arm.)</i> species 1	I, VI
<i>Do. nipponica</i>	VI	<i>Co. (Alo.)</i> species 1	VI
<i>Do. saperoi</i>	VI	<i>Co. (Col.)</i> species 2	VI
<i>Hi. gilli</i>	VI	<i>Do.</i> species 1	VI
<i>Hk. (Yam.) albocinctus</i>	VI	Unplaced species 1	VI
<i>Hl. pallirostris</i>	VI	Unplaced species 2	VI

Table 7

Changes to the generic-level classification of Thai Culicidae since the publication of Section I (Rattanaarithikul *et al.*, 2005a) (number species in parenthesis).

Section I		Sections II–VI	
<i>Anopheles</i> (2 subgenera)	(73)	<i>Anopheles</i> (<i>Anopheles</i>)	(35)
		<i>Anopheles</i> (<i>Cellia</i>)	(37)
		<i>Anopheles</i> (<i>Baimaia</i>)	(1)
Aedini			
<i>Aedes</i> (14 subgenera)	(45)	<i>Aedimorphus</i>	(9)
		<i>Alanstonea</i>	(1)
		<i>Borichinda</i>	(1)
		<i>Bothaella</i>	(2)
		<i>Canraedes</i>	(2)
		<i>Christophersiomyia</i>	(3)
		<i>Petermattinglyius</i> (<i>Aglaonotus</i>)	(1)
		<i>Petermattinglyius</i> (<i>Petermattinglyius</i>)	(3)
		<i>Tewarius</i>	(1)
		<i>Edwardsaedes</i>	(1)
		<i>Fredwardsius</i>	(1)
		<i>Isoaedes</i>	(1)
		<i>Lorrainea</i>	(2)
		<i>Neomelaniconion</i>	(1)
		<i>Paraedes</i>	(2)
		<i>Scutomyia</i>	(1)
		<i>Stegomyia</i> (<i>Heteraspidion</i>)	(2)
		<i>Stegomyia</i> (<i>Huangmyia</i>)	(2)
		<i>Stegomyia</i> (<i>Stegomyia</i>)	(1)
<i>Stegomyia</i> (<i>Xyele</i>)	(1)		
<i>Stegomyia</i> unassigned to subgenus	(8)		
<i>Armigeres</i> (2 subgenera)	(29)	<i>Armigeres</i> (<i>Armigeres</i>)	(14)
		<i>Armigeres</i> (<i>Leicesteria</i>)	(16)
<i>Ayurakitia</i>	(2)	<i>Ayurakitia</i>	(2)
<i>Heizmannia</i> (2 subgenera)	(18)	<i>Heizmannia</i> (<i>Heizmannia</i>)	(16)
		<i>Heizmannia</i> (<i>Mattinglyia</i>)	(2)
<i>Ochlerotatus</i> (6 subgenera)	(44)	<i>Bruceharrisonius</i>	(2)
		<i>Finlaya</i>	(2)
		<i>Collessius</i> (<i>Alloeomyia</i>)	(2)
		<i>Collessius</i> (<i>Collessius</i>)	(4)

Table 7 (continued).

Section I		Sections II–VI	
		<i>Danielsia</i>	(1)
		<i>Downsiomyia</i>	(17)
		<i>Gilesius</i>	(1)
		<i>Himalaius</i>	(2)
		<i>Hopkinsius</i> (<i>Yamada</i>)	(1)
		<i>Hulecoeteomyia</i>	(7)
		<i>Jihlienius</i>	(1)
		<i>Phagomyia</i>	(5)
		<i>Tanakaius</i>	(1)
		<i>Kenknightsia</i>	(2)
		<i>Mucidus</i> (<i>Mucidus</i>)	(2)
		<i>Ochlerotatus</i> (<i>Empihals</i>)	(1)
		<i>Rhinokusea</i>	(1)
<i>Udaya</i>	(1)	<i>Udaya</i>	(1)
<i>Verrallina</i> (3 subgenera)	(23)	<i>Verrallina</i> (<i>Harbachius</i>)	(2)
		<i>Verrallina</i> (<i>Neomacleaya</i>)	(18)
		<i>Verrallina</i> (<i>Verrallina</i>)	(3)
<i>Zeugomyia</i>	(1)	<i>Zeugomyia</i>	(1)
		Unplaced species 1	(1)
		Unplaced species 2	(1)
Other genera			
<i>Aedeomyia</i> (1 subgenus)	(1)	<i>Aedeomyia</i> (<i>Aedeomyia</i>)	(1)
<i>Culex</i> (5 subgenera)	(82)	<i>Culex</i> (<i>Culex</i>)	(19)
		<i>Culex</i> (<i>Culiciomyia</i>)	(16)
		<i>Culex</i> (<i>Eumelanomyia</i>)	(10)
		<i>Culex</i> (<i>Lophoceraomyia</i>)	(31)
		<i>Culex</i> (<i>Oculeomyia</i>)	(6)
<i>Lutzia</i> (1 subgenus)	(3)	<i>Lutzia</i> (<i>Metalutzia</i>)	(3)
<i>Ficalbia</i>	(1)	<i>Ficalbia</i>	(1)
<i>Mimomyia</i> (3 subgenera)	(7)	<i>Mimomyia</i> (<i>Etorleptiomyia</i>)	(2)
		<i>Mimomyia</i> (<i>Ingramia</i>)	(1)
		<i>Mimomyia</i> (<i>Mimomyia</i>)	(4)
<i>Hodgesia</i>	(3)	<i>Hodgesia</i>	(3)
<i>Coquillettidia</i> (1 subgenus)	(4)	<i>Coquillettidia</i> (<i>Coquillettidia</i>)	(4)
<i>Mansonia</i> (1 subgenus)	(6)	<i>Mansonia</i> (<i>Mansonioides</i>)	(6)
<i>Orthopodomyia</i>	(5)	<i>Orthopodomyia</i>	(5)

Table 7 (continued).

Section I		Sections II–VI	
<i>Malaya</i>	(2)	<i>Malaya</i>	(2)
<i>Topomyia</i> (2 subgenera)	(18)	<i>Topomyia</i> (<i>Suaymyia</i>)	(8)
		<i>Topomyia</i> (<i>Topomyia</i>)	(13)
		<i>Topomyia</i> subgenus uncertain	(2)
		<i>Kimia</i>	(1)
<i>Tripterooides</i> (2 subgenera)	(13)	<i>Tripterooides</i> (<i>Rachionotomyia</i>)	(6)
		<i>Tripterooides</i> (<i>Tripterooides</i>)	(9)
<i>Toxorhynchites</i> (1 subgenus)	(10)	<i>Toxorhynchites</i> (<i>Toxorhynchites</i>)	(13)
<i>Uranotaenia</i> (2 subgenera)	(45)	<i>Uranotaenia</i> (<i>Pseudoficalbia</i>)	(23)
		<i>Uranotaenia</i> (<i>Uranotaenia</i>)	(22)
Total:		Total:	
23 genera, 48 subgenera, 436 species		53 genera, 40 subgenera, 459 species	

ILLUSTRATED KEYS FOR THE IDENTIFICATION OF TRIBE AEDINI

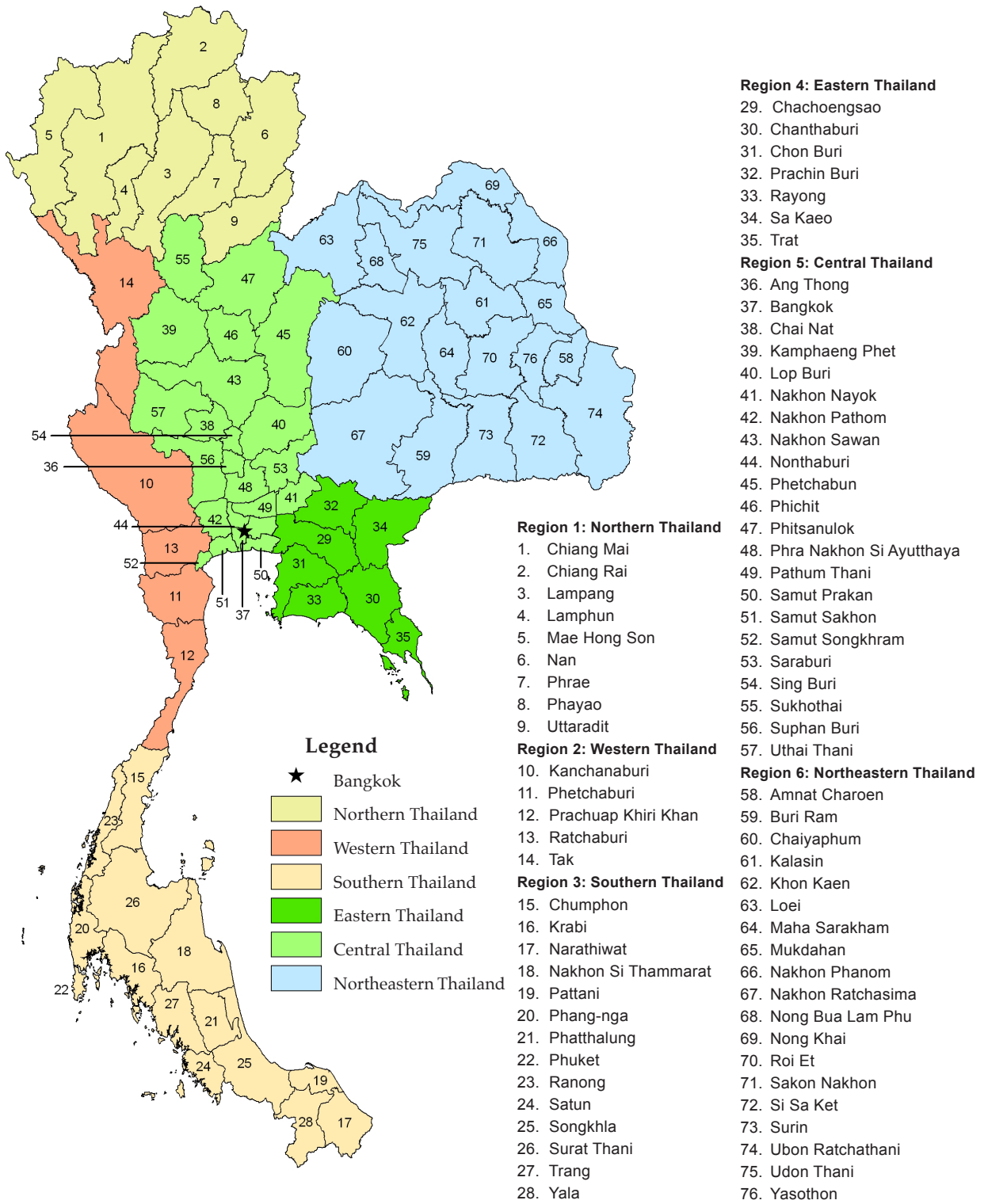


Fig 1–Map of Thailand showing the six regions and 76 provinces.

**Mosquito-borne disease fatalities
in Thailand**

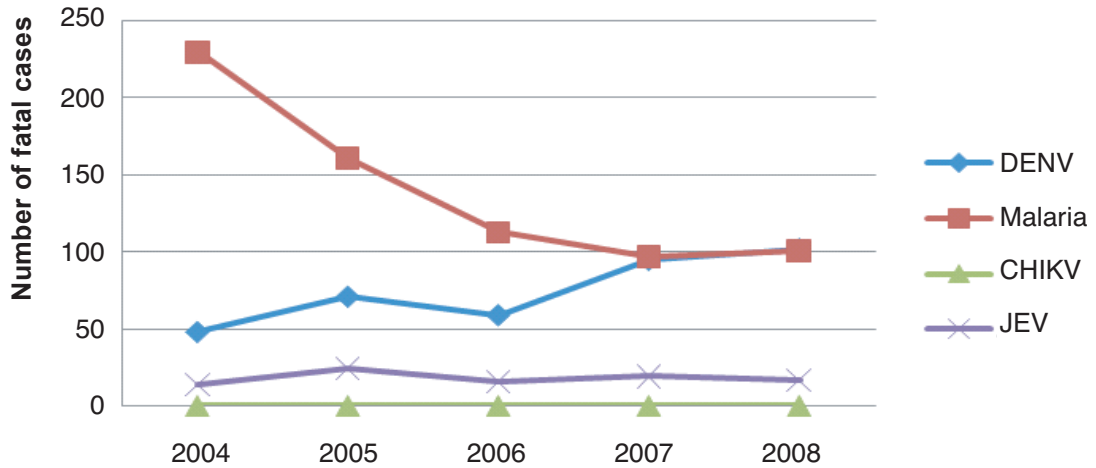


Fig 2—Total number of reported deaths by disease for malaria, dengue fever, chikungunya fever, and Japanese encephalitis in Thailand from 2004–2009. Source: Ministry of Public Health of Thailand, Divisions of Disease Control and Vector-borne Disease Control and Vector-borne Disease websites: <http://dhf.ddc.moph.go.th>, <http://www.thaivbd.org>, <http://203.157.15.4>

**Incidence of major mosquito-borne
diseases of Thailand**

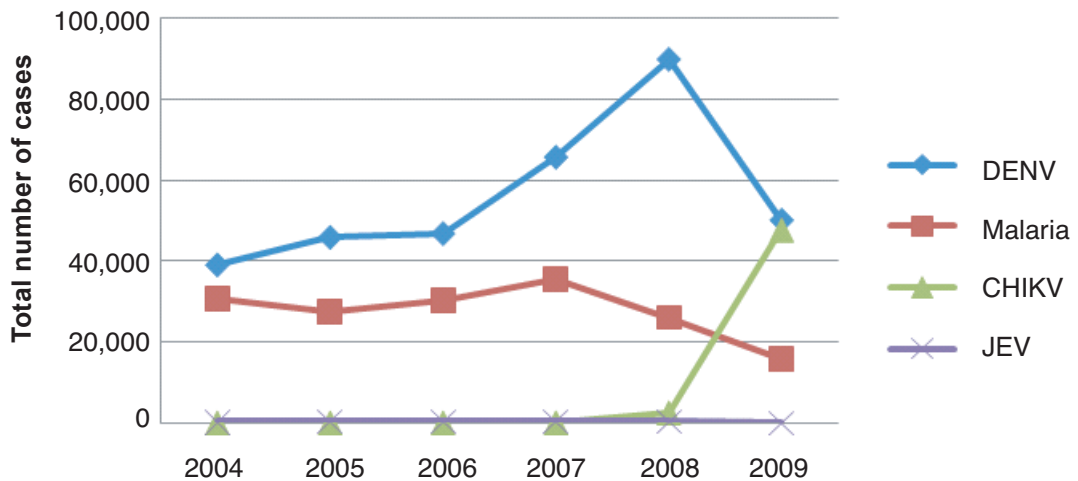


Fig 3—Number of cases per 100,000 people of malaria, dengue fever, chikungunya fever, and Japanese encephalitis reported in Thailand from 2004–2009. Source: Ministry of Public Health of Thailand, Divisions of Disease Control and Vector-borne Disease Control and Vector-borne Disease websites: <http://dhf.ddc.moph.go.th>, <http://www.thaivbd.org>, <http://203.157.15.4>

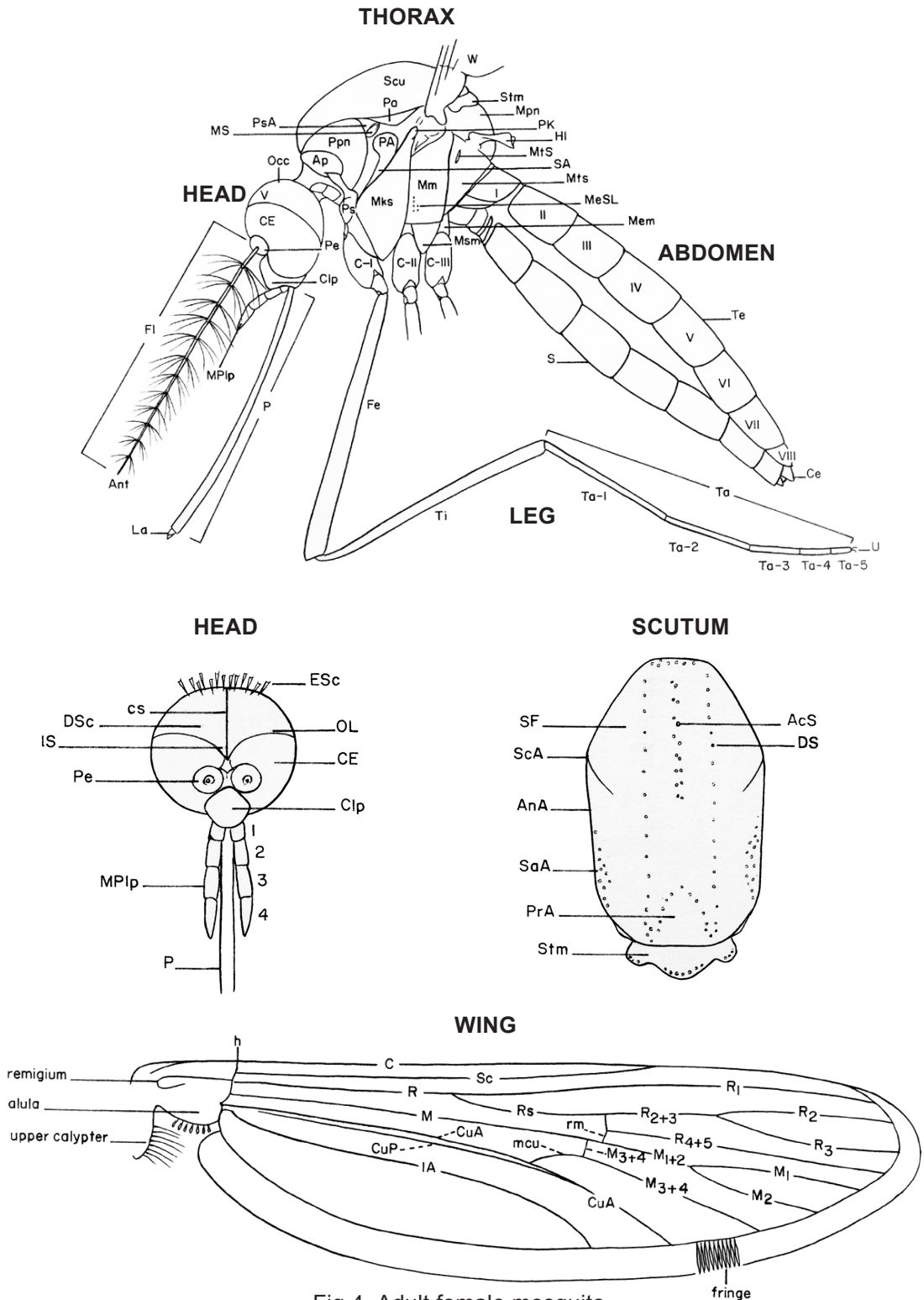


Fig 4-Adult female mosquito.

ABBREVIATIONS ADULT

HEAD

Ant	=	antenna
CE	=	compound eye
Clp	=	clypeus
cs	=	coronal suture
DSc	=	decumbent scales
ESc	=	erect scales
FI	=	flagellum
IS	=	interocular suture
La	=	labellum
MPIp	=	maxillary palpus
Occ	=	occiput
OL	=	ocular line
Pe	=	pedicel
P	=	proboscis
V	=	vertex

ABDOMEN

Ce	=	cercus
Te	=	tergum
S	=	sternum
I-VIII	=	abdominal segments

WING VEINS

C	=	costa
CuA	=	cubitus anterior
CuP	=	cubitus posterior
h	=	humeral crossvein
M	=	media
M ₁ , M ₂ , M ₁₊₂ , M ₃₊₄	=	branches of media
mcu	=	mediocubital crossvein
R	=	radius
R ₁ , R ₂ , R ₃ , R ₂₊₃ , R ₄₊₅	=	branches of radius
rm	=	radiomedial crossvein
Rs	=	radial sector
Sc	=	subcosta
1A	=	anal vein

THORAX

AcS	=	acrostichal setae
AnA	=	antealar area
Ap	=	antepronotum
DS	=	dorsocentral setae
HI	=	halter
Mem	=	metamerom
MeSL	=	lower mesepimeral setae
Mks	=	mesokatepisternum
Mm	=	mesepimeron
Mpn	=	mesopostnotum
MS	=	mesothoracic spiracle
Msm	=	mesomeron
Mts	=	metepisternum
MtS	=	metathoracic spiracle
PA	=	postspiracular area
Pa	=	paratergite
PK	=	prealar knob
Ppn	=	postpronotum
PrA	=	prescutellar area
Ps	=	proepisternum
PsA	=	prespiracular area
SA	=	subspiracular area
SaA	=	supraalar area
ScA	=	scutal angle
Scu	=	scutum
SF	=	scutal fossa
Stm	=	scutellum
w	=	wing

LEG

C-1	=	forecoxa
C-II	=	midcoxa
C-III	=	hindcoxa
Fe	=	femur
Ta	=	tarsus
Ta-1	=	tarsomere 1
Ta-2	=	tarsomere 2
Ta-3	=	tarsomere 3
Ta-4	=	tarsomere 4
Ta-5	=	tarsomere 5
Ti	=	tibia
U	=	ungues

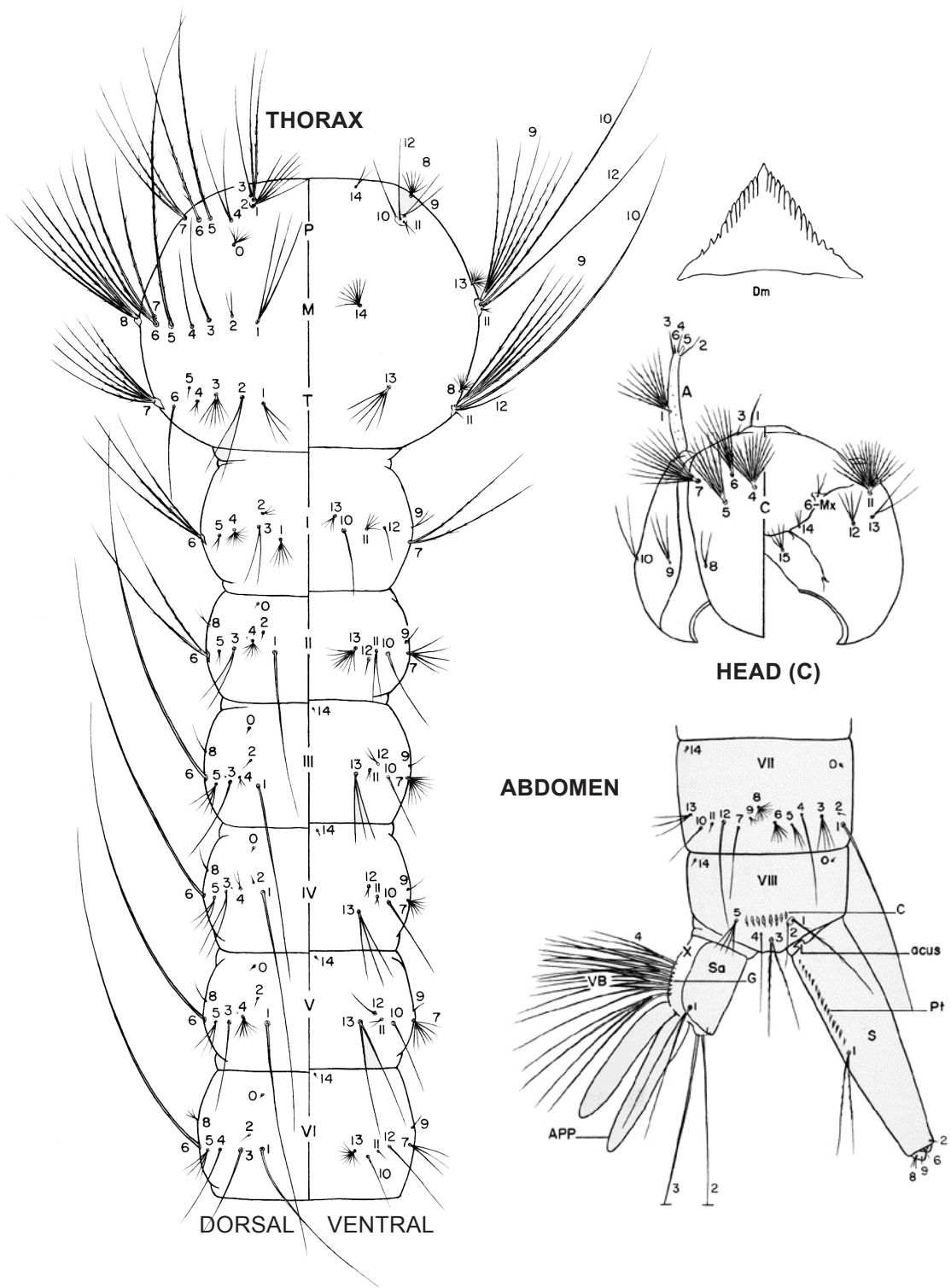


Fig 5—Fourth-instar larva.

ABBREVIATIONS
LARVA

HEAD

A	=	antenna
C	=	cranium, head capsule
Dm	=	dorsomentum
PTP	=	posterior tentorial pit
1-6-A	=	antennal setae
1-15-C	=	cranial setae

THORAX

P	=	prothorax
M	=	mesothorax
T	=	metathorax
0-14	=	setae on designated areas, e.g., seta 1-M, seta 1-T

ABDOMEN

APP	=	anal papilla
C	=	comb
G	=	grid
Pt	=	pecten
S	=	siphon
Sa	=	saddle
VB	=	ventral brush (seta 4-X)
I-VIII, X	=	abdominal segments
0-14	=	setae on designated areas, e.g., seta 1-S