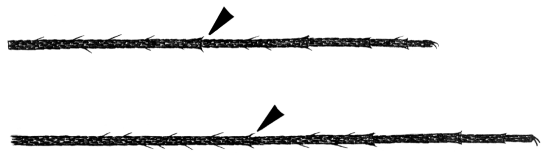
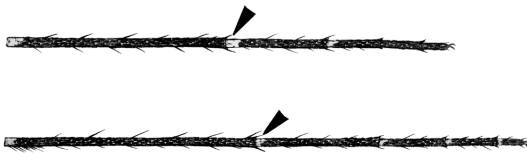


**KEY TO THE SPECIES OF GENUS *AEDIMORPHUS*  
ADULT FEMALES**

From PLATE 12: Both hindungues simple; paratergite usually with pale scales

Mid- and hindtarsomeres 1–3, and occasionally 4 and/or 5, with basal pale bands or dorsal pale patches

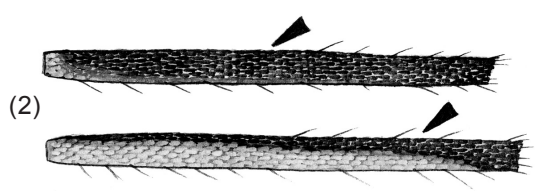
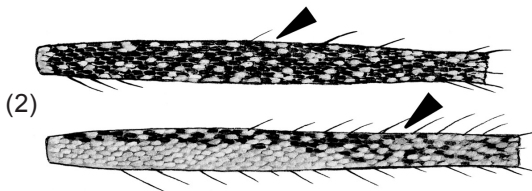
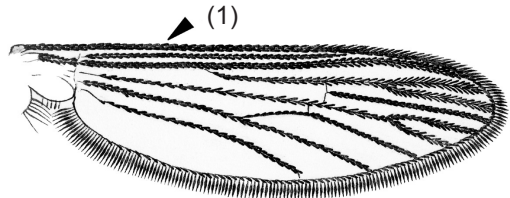
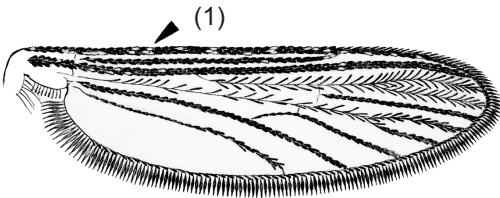
Mid- and hindtarsomeres entirely dark



↳ To PLATE 26

1. Wing with scattered pale scales on anterior veins
2. Anterior surfaces of mid- and hindfemora speckled with pale scales

1. Wing with dark scales on costa
2. Anterior surfaces of mid- and hindfemora not speckled with pale scales

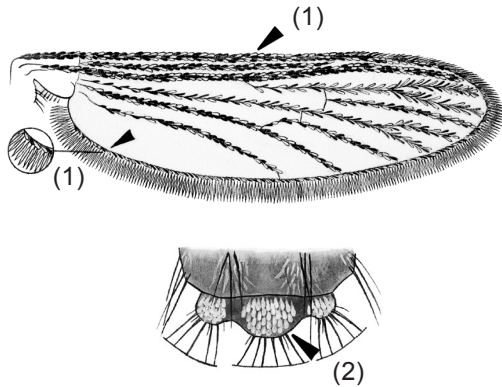


↳ To PLATE 25 (Above)

↳ To PLATE 25 (Below)

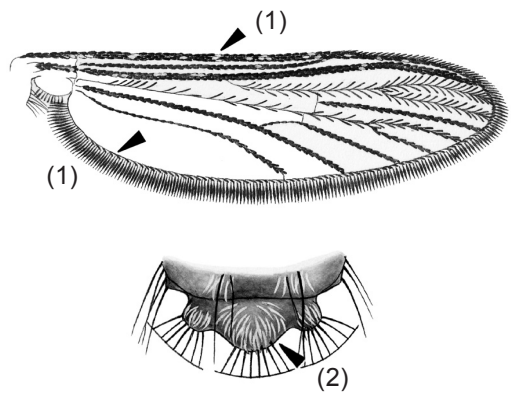
From PLATE 24: Wing with scattered pale scales on anterior veins; anterior surfaces of mid- and hindfemora speckled with pale scales

1. Wing with numerous dark and pale scales as well as pale fringe scales along posterior margin
2. Scutellum with broad pale scales



*Am. pipersalatus*

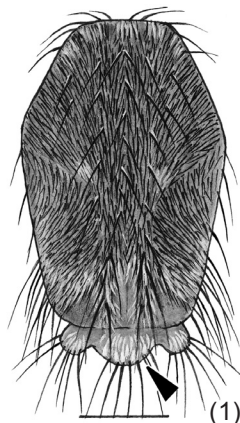
1. Wing with sparse dark and pale scales and no pale fringe scales along posterior margin
2. Scutellum with narrow pale scales



*Am. vexans*

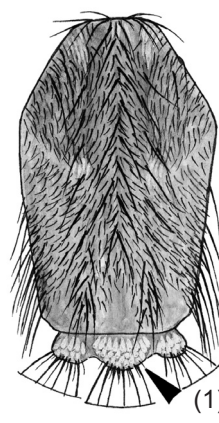
From PLATE 24: Wing with dark scales on costa; anterior surfaces of mid- and hindfemora not speckled with pale scales

1. Scutellum with broad and narrow pale scales
2. Hindtarsomere 5 with narrow basal pale band



*Am. caecus*

1. Scutellum with broad silvery scales
2. Hindtarsomere 5 completely pale-scaled



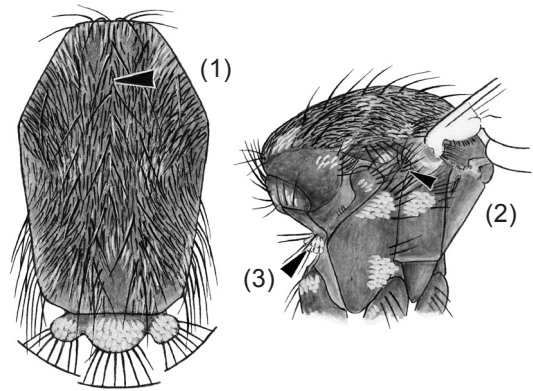
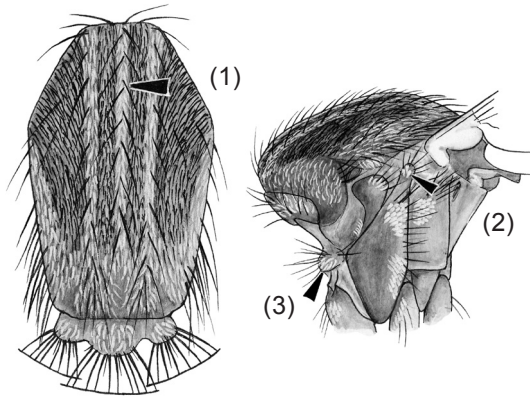
*Am. orbitae*



From PLATE 24: Mid- and hindtarsomeres entirely dark

- 1. Scutum with 2 or 3 longitudinal stripes of pale scales
- 2. Prealar scales present
- 3. Upper proepisternum with narrow scales

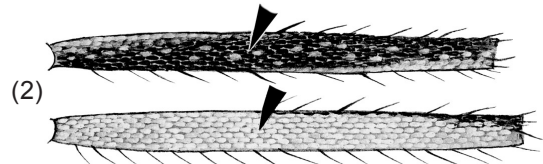
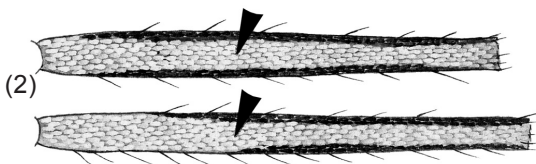
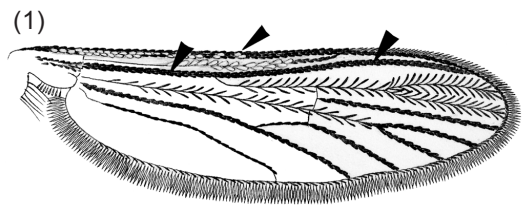
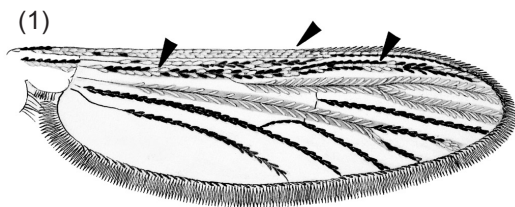
- 1. Scutum without longitudinal stripes of pale scales
- 2. Prealar scales absent
- 3. Upper proepisternum with broad scales



➤ To PLATE 27

- 1. Costa and subcosta with golden and brown scales for nearly entire length, R and R<sub>1</sub> dark- and pale-scaled
- 2. Mid- and hindfemora with pale stripes on anterior surfaces

- 1. Costa and/or subcosta with pale scales on basal 0.33–0.05, R and R<sub>1</sub> dark-scaled
- 2. Mid- and hindfemora without pale stripes on anterior surfaces

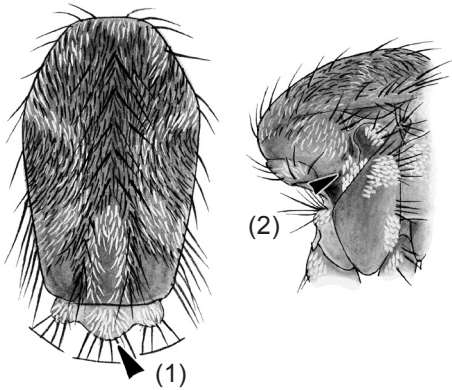


*Am. pallidostratus*

*Am. mediolineatus*

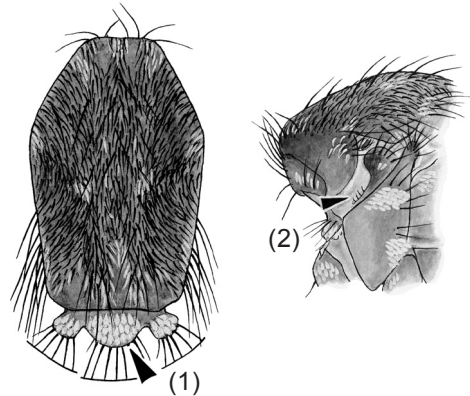
From PLATE 26: Scutum without longitudinal stripes of pale scales; prealar scales absent; proepisternum with broad scales

1. Scutellum with narrow pale scales
2. Subspiracular area with 2 patches of broad scales

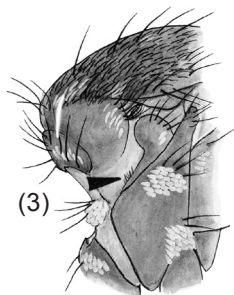
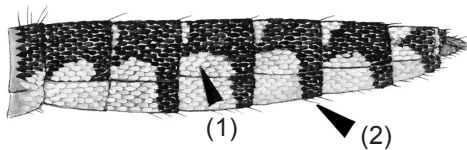


*Am. culicinus*

1. Scutellum with broad silvery scales
2. Subspiracular area with a patch of setae or scales

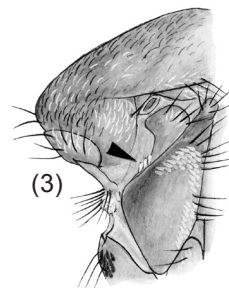
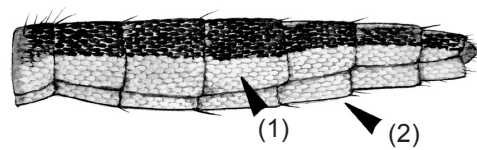


1. Abdominal terga I–VII with basolateral pale spots
2. Abdominal sterna III–VII with apical dark bands
3. Subspiracular area with a patch of short fine setae



*Am. alboscuteclatus*

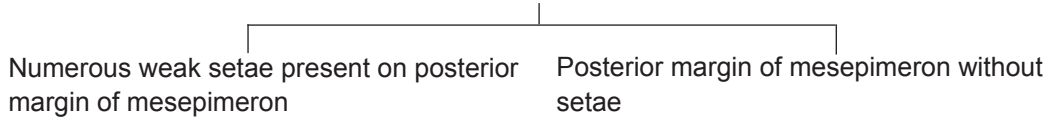
1. Abdominal terga I–VII with lateral margins completely pale-scaled
2. Abdominal sterna entirely pale-scaled
3. Subspiracular area with a patch of pale scales



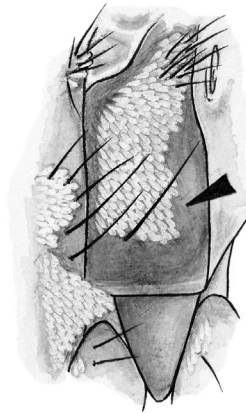
*Am. pampangensis*

**KEY TO THE SPECIES OF GENUS *ARMIGERES* SUBGENUS *ARMIGERES*  
ADULT FEMALES<sup>a</sup>**

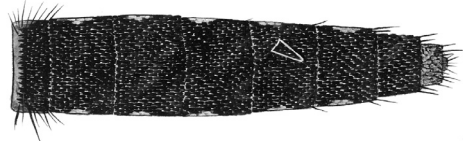
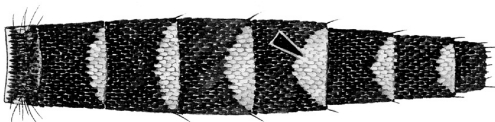
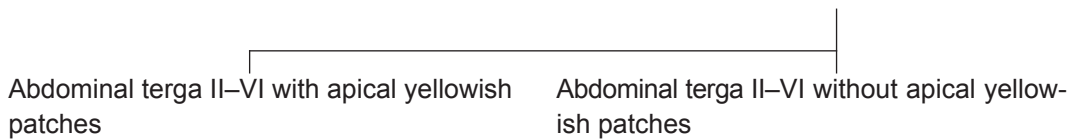
From PLATE 7: Ocular line of scales narrow; two rows of scales between the eyes on the underside of the head; prescutellar setae present; lower anterior mesepimeral seta present



Specimens not available



*Ar. (Arm.) maximus*



*Ar. (Arm.) theobaldi* (in part)

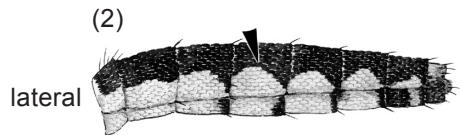
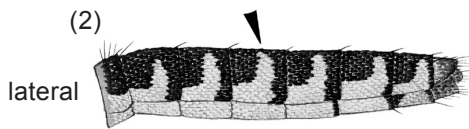
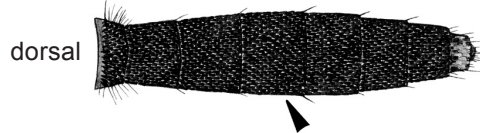
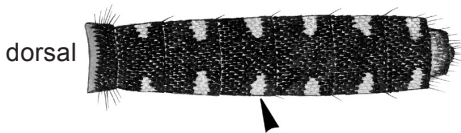
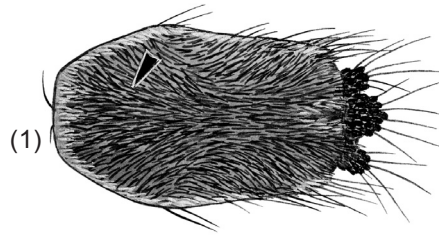
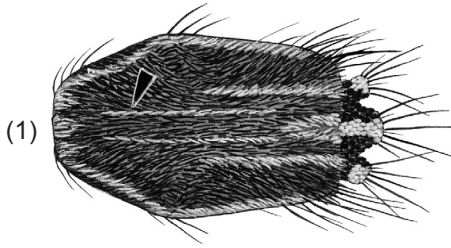
↳ To PLATE 29

<sup>a</sup>Females of *Ar.* species nr. *kuchingensis* and *Ar.* species 1 are unknown.

From PLATE 28: Abdominal terga II–VI without apical yellowish patches

1. Scutum with pair of submedian golden stripes
2. Abdominal terga with lateral pale patches extending onto dorsum

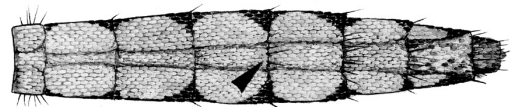
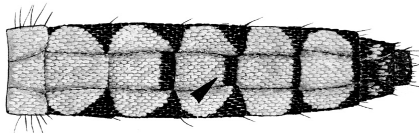
1. Scutum without pair of submedian golden stripes
2. Abdominal terga with lateral pale patches not extending onto dorsum



*Ar. (Arm.) aureolineatus*

Abdominal sterna III–VI with apical dark bands

Abdominal sterna III–VI entirely pale-scaled



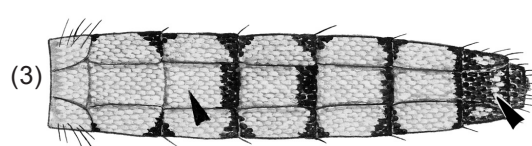
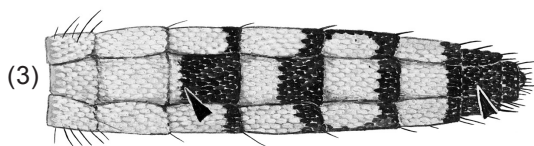
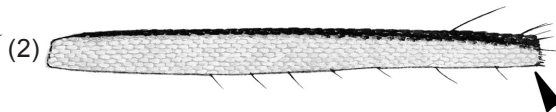
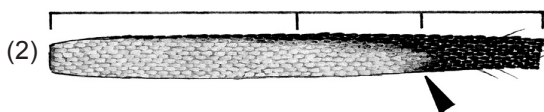
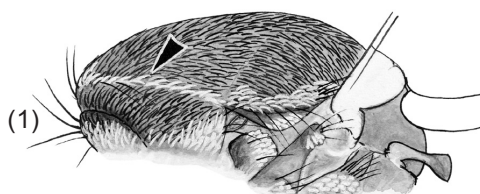
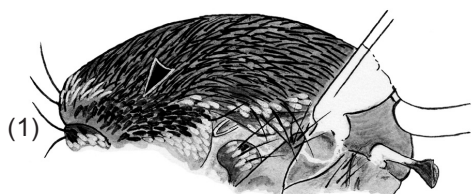
↳ To PLATE 30

↳ To PLATE 31

From PLATE 29: Abdominal sterna III–VI with apical dark bands

1. Lateral margin of scutum with incomplete line of pale scales
2. Posteroventral surface of hindfemur with broad white band extending 0.65–0.75 from base
3. Sternum III, occasionally IV, entirely dark or with narrow basal pale band, VII entirely dark

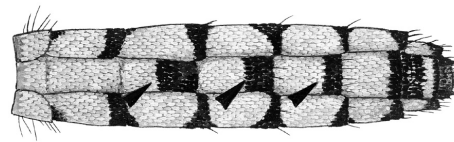
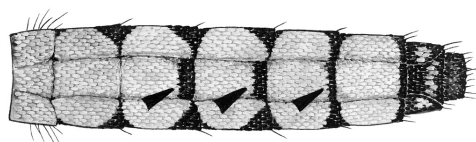
1. Lateral margin of scutum with complete line of pale scales
2. Posteroventral surface of hindfemur with broad white band extending to or nearly to apex
3. Sterna III–VII with broad basal pale bands, VII with narrow apical or subapical pale band



*Ar. (Arm.) moultoni*

Abdominal sterna III–V with narrow apical dark bands 0.33, 0.25, and 0.20 or less length of sterna III–V, respectively

Abdominal sterna III–V with broad apical dark bands 0.50, 0.33, and 0.25 length of sterna III–V, respectively



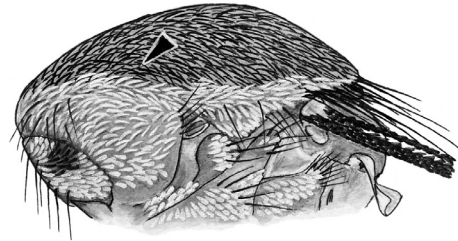
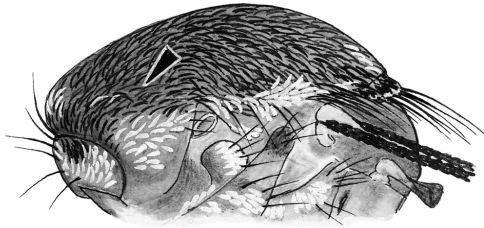
*Ar. (Arm.) kesseli*

*Ar. (Arm.) subalbatus*

From PLATE 29: Abdominal sterna III–VI entirely pale-scaled

Scutum with lateral border of white scales not extending around margin

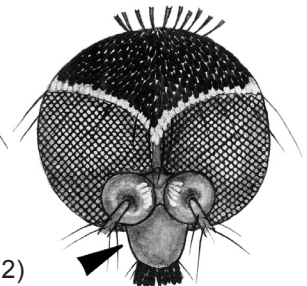
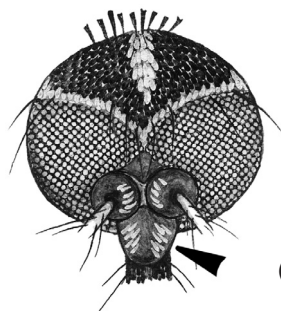
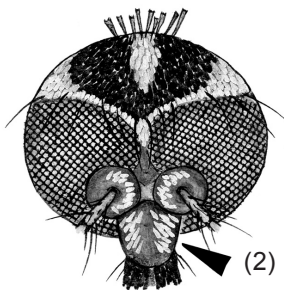
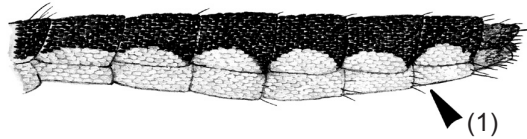
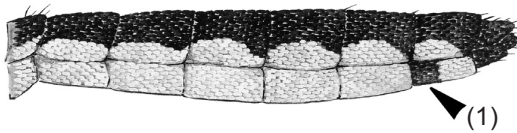
Scutum with conspicuous border of white scales extending around margin



↳ To PLATE 32 (Above)

1. Abdominal sternum VII with basal dark band  
2. Clypeus with pale scales

1. Abdominal sternum VII entirely pale  
2. Clypeus with or without pale scales



*Ar. (Arm.) foliatus*  
and *Ar. (Arm.) kuchingensis*<sup>a</sup> (in part)

↳ To PLATE 32 (Below)

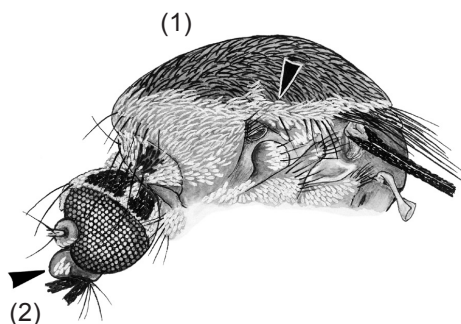
<sup>a</sup>*Armigeres kuchingensis* of Thurman, 1959.



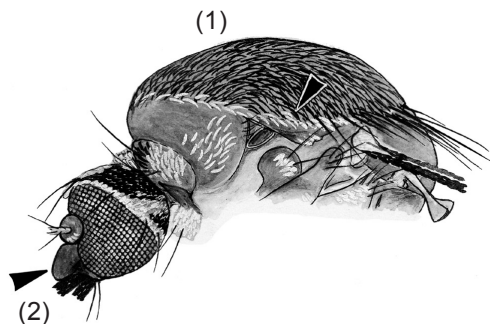
From PLATE 31: Scutum with conspicuous border of white scales extending around margin

- 1. Scutum with broad line of white scales around margin
- 2. Clypeus with white or brown scales

- 1. Scutum with narrow line of white scales around margin
- 2. Clypeus bare



*Ar. (Arm.) theobaldi* (in part)

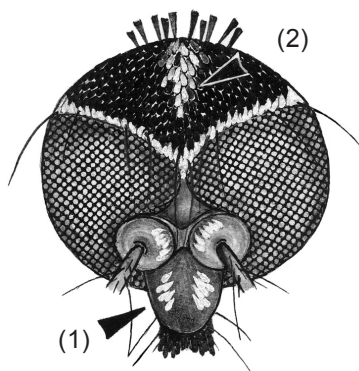


↳ To PLATE 33

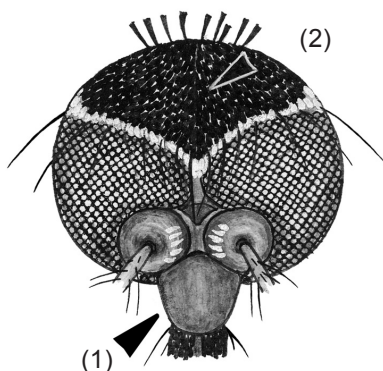
From PLATE 31: Abdominal sternum VII entirely pale; clypeus with or without pale scales

- 1. Clypeus with pale scales
- 2. Head with dorsomedian patch of pale scales

- 1. Clypeus bare
- 2. Decumbent scales of head entirely dark



*Ar. (Arm.) malayi*

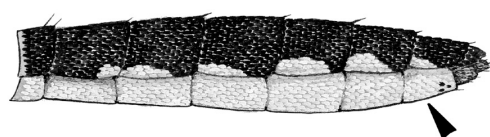
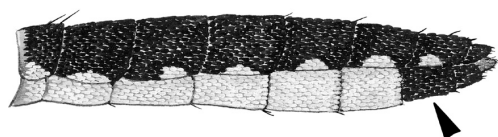


*Ar. (Arm.) jugraensis*

From PLATE 32: Scutum with narrow line of white scales around margin; clypeus bare

Abdominal sternum VII entirely dark-scaled

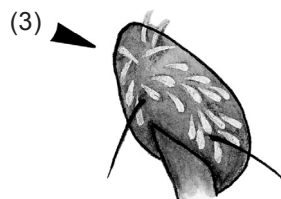
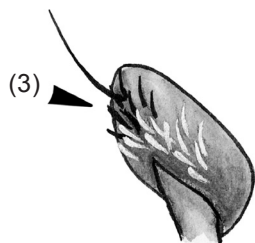
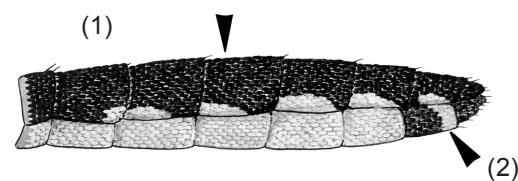
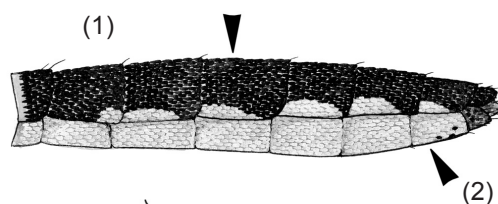
Abdominal sternum VII partly or largely pale-scaled



*Ar. (Arm.) confusus*

1. Scales of scutum and abdominal terga with dark metallic blue reflections
2. Abdominal sternum VII largely pale-scaled
3. Antepronotum and postpronotum with dark scales dorsally

1. Scales of scutum and abdominal terga dark brown
2. Abdominal sternum VII with apical or subapical pale band
3. Antepronotum and postpronotum with pale scales dorsally



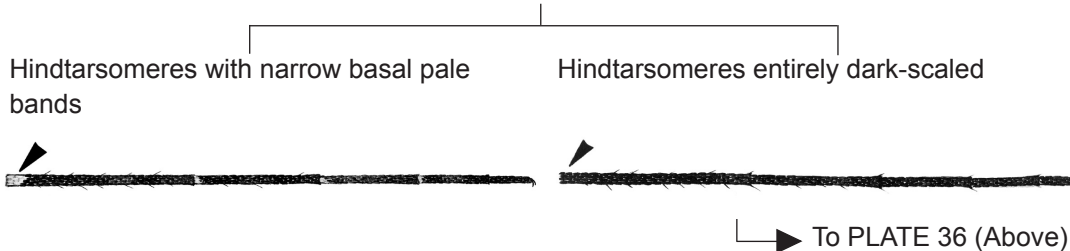
*Ar. (Arm.) bhayungia*<sup>a</sup>

*Ar. (Arm.) kuchingensis* (in part)

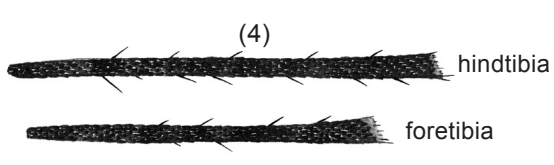
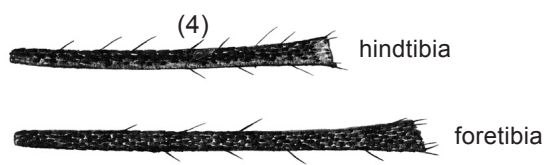
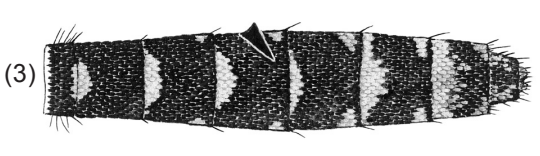
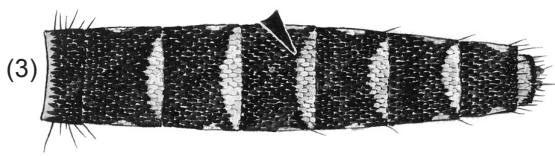
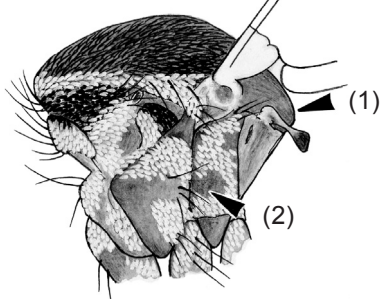
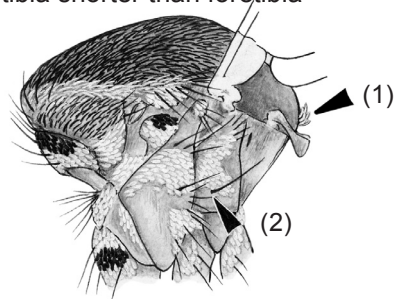
<sup>a</sup>Available specimens damaged.

**KEY TO THE SPECIES OF GENUS *ARMIGERES* SUBGENUS *LEICESTERIA* ADULT FEMALES<sup>a</sup>**

From PLATE 2: Maxillary palpus 0.4–0.7 length of proboscis; postspiracular area with dark scales dorsally and white scales ventrally



- |   |  |
|---|--|
| <ol style="list-style-type: none"> <li>1. Mesopostnotum with pale scales and setae</li> <li>2. One or 2 lower anterior mesepimeral setae present</li> <li>3. Abdominal terga II–VI with apical bands of pale scales</li> <li>4. Hindtibia shorter than foretibia</li> </ol> | <ol style="list-style-type: none"> <li>1. Mesopostnotum without scales and setae</li> <li>2. Lower anterior mesepimeral setae absent</li> <li>3. Abdominal terga II–VI without apical bands of pale scales, may have subapical lateral patches</li> <li>4. Hindtibia equal or longer than foretibia</li> </ol> |
|---|--|



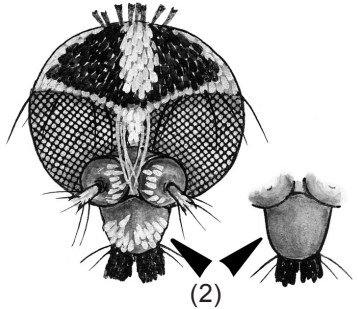
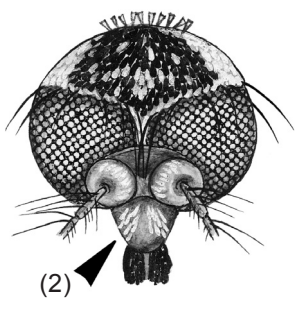
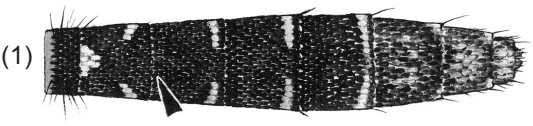
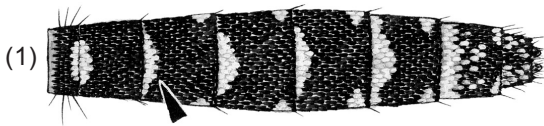
*Ar. (Lei.) flavus*

↳ To PLATE 35

<sup>a</sup>The female of *Ar. cingulatus* is known but not included in the key due to the unavailability of specimens for study.

From PLATE 34: Mesopostnotum without scales and setae; lower mesepimeral setae absent; abdominal terga II–VI without apical bands of pale scales, may have subapical lateral patches; hindtibia equal or longer than foretibia

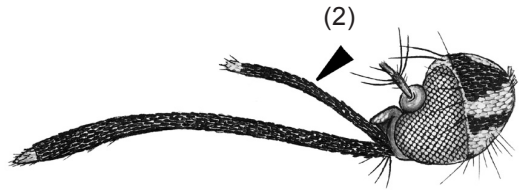
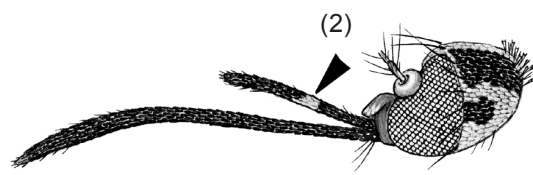
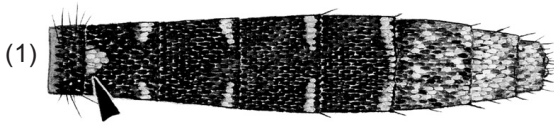
- |   |   |
|---|---|
| <ul style="list-style-type: none"> <li>1. Abdominal terga III–VII with basal pale bands or patches</li> <li>2. Clypeus with scales</li> </ul> | <ul style="list-style-type: none"> <li>1. Abdominal terga III–VII without basal pale bands or patches</li> <li>2. Clypeus with or without scales</li> </ul> |
|---|---|



*Ar. (Lei.) magnus*

- 1. Abdominal tergum II with median basal pale patch
- 2. Maxillary palpus with median white band

- 1. Abdominal tergum II without median basal pale patch
- 2. Maxillary palpus usually without median white band

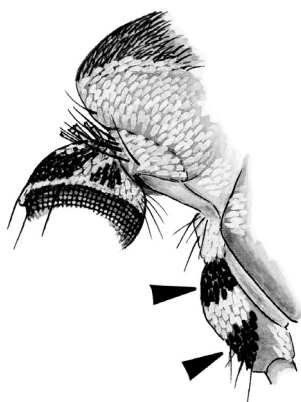


*Ar. (Lei.) annulipalpis*

↳ To PLATE 36 (Below)

From PLATE 34: Hindtarsomeres entirely dark-scaled

Forecoxa with 2 bands of dark scales      Forecoxa with single band of dark scales



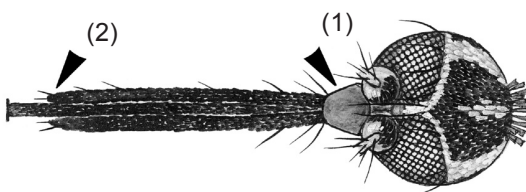
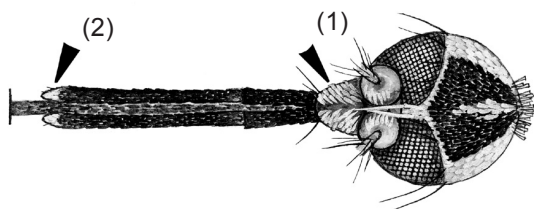
↳ To PLATE 37 (Above)

↳ To PLATE 38 (Above)

From PLATE 35: Abdominal tergum II without median basal pale patch; maxillary palpus usually without median white band

- 1. Clypeus with scales
- 2. Maxillary palpus white at tip

- 1. Clypeus without scales
- 2. Maxillary palpus dark at tip



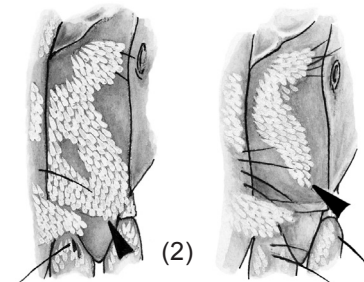
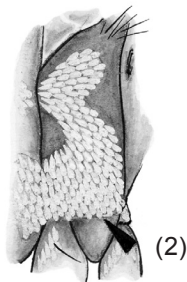
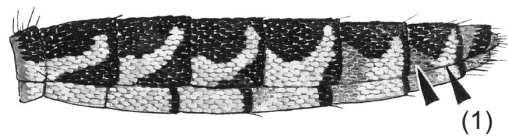
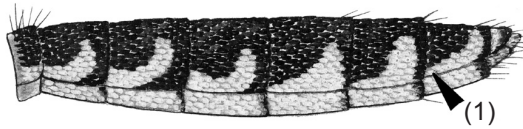
*Ar. (Lei.) annulitarsis*

↳ To PLATE 37 (Below)

From PLATE 36: Forecoxa with 2 bands of dark scales

- 1. Abdominal terga with lateral patches of white scales
- 2. Mesepimeron with patch of white scales extending to ventral margin

- 1. Abdominal terga with lateral patches of white and yellow scales
- 2. Mesepimeron with patch of white scales of variable length



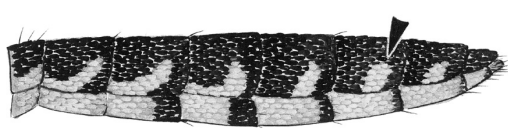
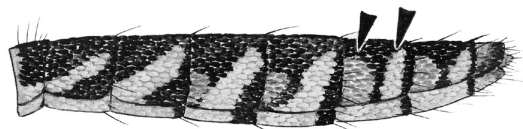
*Ar. (Lei.) pectinatus* and *Ar. (Lei.) vimoli*

↳ To PLATE 38 (Below)

From PLATE 36: Clypeus without scales; maxillary palpus dark at tip

Abdominal terga with lateral patches of white and yellow scales

Abdominal terga with lateral patches of white scales only



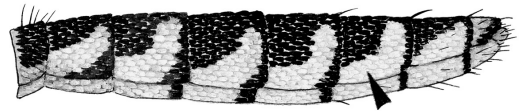
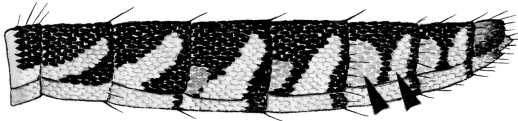
*Ar. (Lei.) dolichocephalus* (in part)

*Ar. (Lei.) inchoatus*

From PLATE 36: Forecoxa with single band of dark scales

Abdominal terga with lateral patches of white and yellow scales

Abdominal terga with lateral patches of white scales only



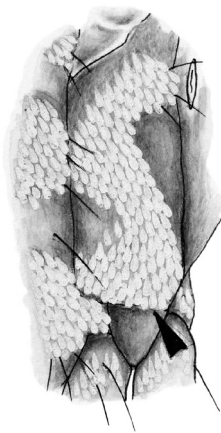
*Ar. (Lei.) dolichocephalus* (in part)

↳ To PLATE 39

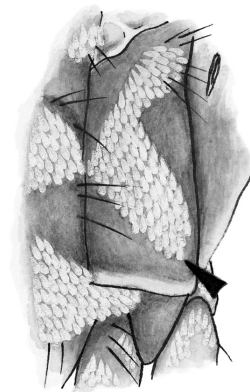
From PLATE 37: Abdominal terga with lateral patches of white and yellow scales; mesepimeron with patch of white scales of variable length

Mesepimeron with patch of white scales extending to ventral margin

Mesepimeron with patch of white scales not extending to ventral margin



*Ar. (Lei.) omissus*

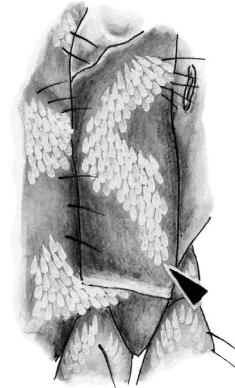
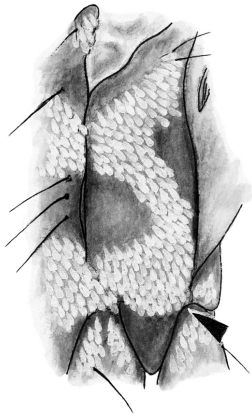


*Ar. (Lei.) dentatus*

From PLATE 38: Abdominal terga with lateral patches of white scales only

Mesepimeron with patch of white scales extending to ventral margin

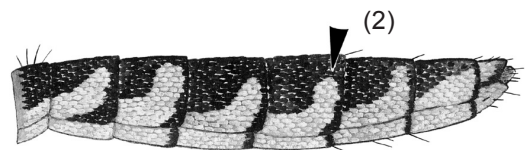
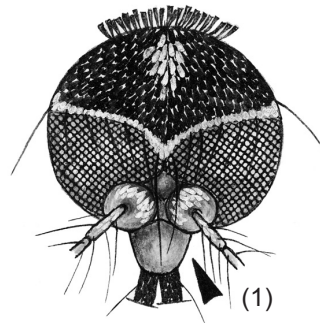
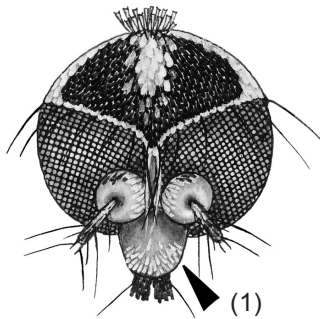
Mesepimeron with patch of white scales not extending to ventral margin



➔ To PLATE 40

1. Clypeus with white scales  
2. Abdominal terga with lateral white patches extending onto dorsum, forming apical or subapical pale bands

1. Clypeus without scales  
2. Abdominal terga with lateral white patches not extending onto dorsum



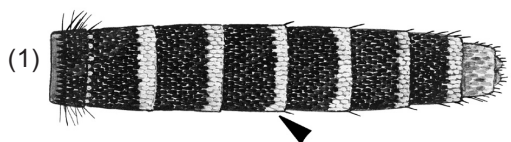
*Ar. (Lei.) longipalpis*

*Ar. (Lei.) digitatus*



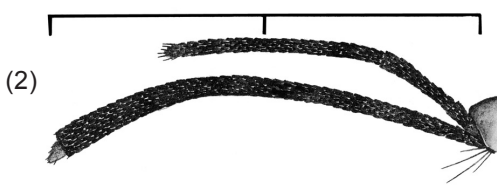
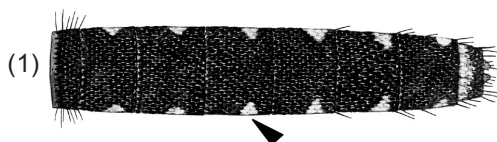
From PLATE 39: Mesepimeron with patch of white scales not extending to ventral margin

1. Abdominal terga with lateral white patches extending onto dorsum, forming apical or subapical pale bands
2. Maxillary palpus 0.5 or less length of proboscis

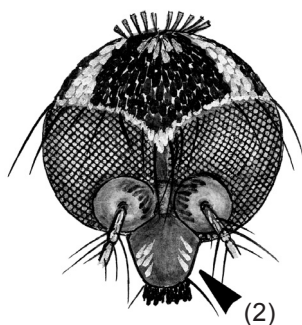
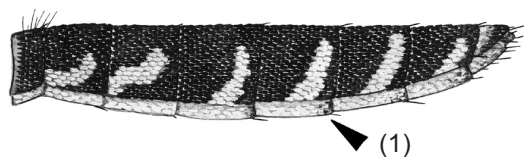


*Ar. (Lei.) balteatus*

1. Abdominal terga with lateral pale patches not forming dorsal apical or subapical bands
2. Maxillary palpus more than 0.5 length of proboscis

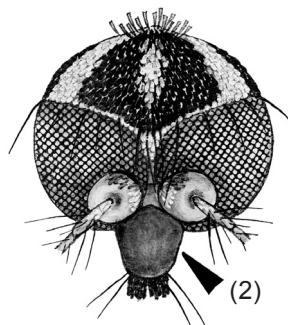
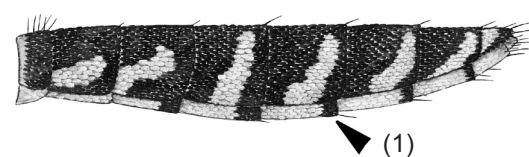


1. Abdominal sterna with inconspicuous apical dark bands
2. Clypeus with scales



*Ar. (Lei.) pendulus*

1. Abdominal sterna with conspicuous apical dark bands
2. Clypeus without scales



*Ar. (Lei.) traubi*