



**Mahidol University**  
Faculty of Tropical Medicine

# **GRADUATE DIPLOMA PROGRAMME IN TROPICAL MEDICINE AND HYGIENE**

**(INTERNATIONAL PROGRAMME)**

**FACULTY OF TROPICAL MEDICINE (FTM)**

**PROSPECTUS**

# **DTM&H**

**2021-2022**





### **Why Faculty of Tropical Medicine, Mahidol University ?**

The faculty of Tropical Medicine founded in 1960 continues to develop and to be recognized as “the only institute for studying tropical diseases in the tropics”. Its main aims are to promote high caliber teaching and research excellence for advancing knowledge in medical sciences, and to provide quality medical services in the treatment and prevention of tropical diseases.

The faculty of tropical medicine is strongly committed to high-quality research in the area of tropical diseases ranging from molecular studies to fieldwork at the community level, laboratory, clinical, field and epidemiological studies in vector-borne diseases, such as malaria and dengue, melioidosis, soil-and food and water-borne diseases and other communicable and non-communicable diseases endemic to the tropics.

### **Why DTM&H?**

Situated in true tropical region, with true tropical medicine network open for 60 years with alumni from all over the world.

### **We aim for better learning outcomes! Guaranteed by**

- Best Practice Award 2011 from the National Qualifications Framework for Higher Education, Thailand
- One of 18 accredited DTM courses by ASTMH
- Gateway to the Master of Clinical Tropical Medicine Program (MCTM) accredited by AUN-QA



## Objectives of the Programme

After complete the programme The diploma graduate shall have qualification according to Graduate Programme Standard Criteria of Ministry of Education and have the characteristics, knowledge and skills as follows:

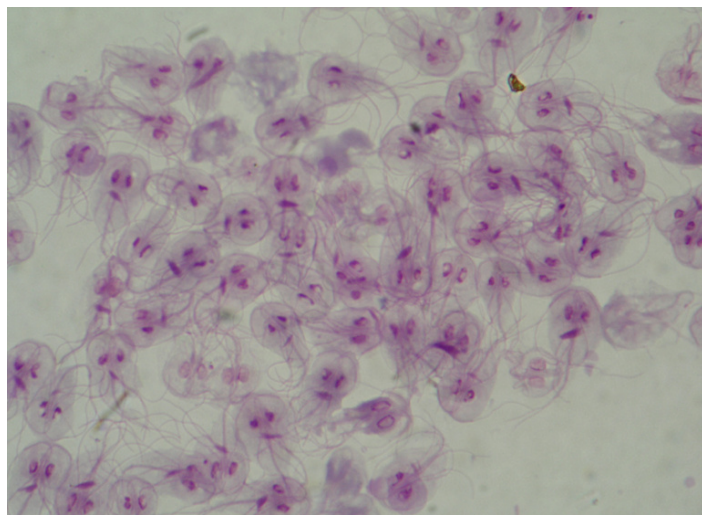
- Able to have academic and professional integrity in clinical management of tropical medicine.
- Able to gain knowledge both theory and practices of tropical medicine and travel medicine including updated innovation, disease epidemiology, clinical manifestations, laboratory diagnosis, proper treatment, prevention and control with multi disciplinary approaches.
- Able to be creatively analyze, discuss, apply and present knowledge in tropical medicine for innovative clinical practices.
- Able to formulate strong leadership, teamworking, communication skills. Ability to get people together forming ideas and work to solve problems.
- Able to effectively communicate and discuss scientific issues using appropriate informative technologies.



## Programme duration

5 months, start the first week of August and ends at the end of December each year

**Tuition Fee :** Approximately 5,000 US  
(1 US = 34 Baht)



## Programme Learning Outcomes (PLOs)

- Demonstrate ethical and professional judgment on clinical practices in clinical medicine
- Describe and demonstrate issues related to tropical medicine and travel medicine including updated innovation, disease epidemiology, clinical manifestations, laboratory diagnosis, proper treatment, prevention and control
- Gain knowledge and able to apply skill in management of tropical diseases in both health facilities and communities
- Efficiency in teamwork
- Select appropriate technologies for analysis and communication in Tropical diseases and travel medicine.

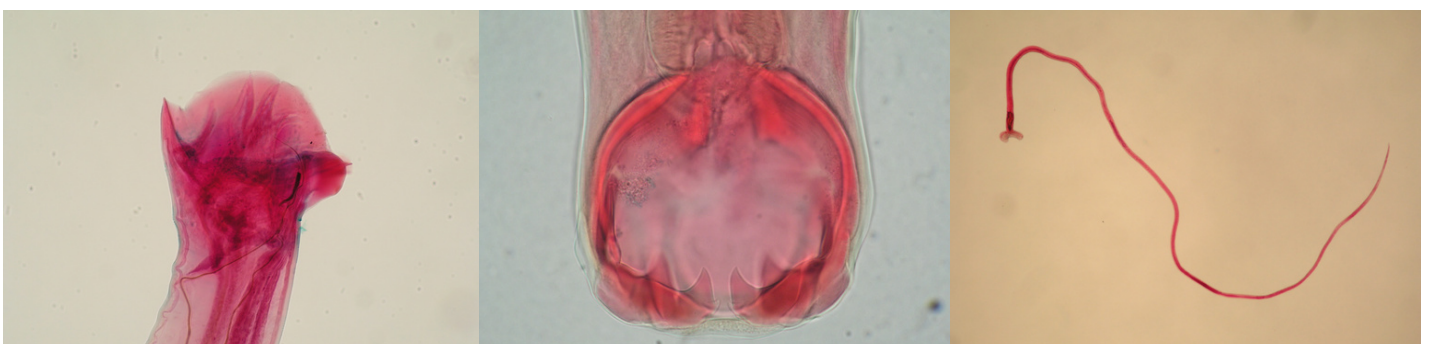
## Admission Requirements

- Holding a Medical degree (M.D. or M.B.B.S. or equivalent degrees) from medical school listed in World Directory of Medical Schools. (<https://search.wdoms.org/>) and endorsed by The Ministry of Higher Education, Science, Research and Innovation
- Obtained a cumulative grade point average of not less than 2.50
- Have an English Proficiency Entrance Requirement according to the Faculty of Graduate Studies criteria (Donot be concerned, Fulfil the graduation requirement during your study)



## Important Date for year 2022

Apply from Now	Until July
August	Opening
August – Mid November	Study core courses
Field study for parasite and vector survey in the community	July
Field study for Tropical Infectious Diseases such as Malaria, Dengue, Leptospirosis, Melioidosis, Scrub Typhus etc	November
Mid November – December	Study elective course
December	Closing







## How to Apply

### Fill application form

- For all other programs apply via Faculty of Tropical Medicine (Fill Form A - APPLICATION FOR ADMISSION OF INTERNATIONAL STUDENTS)

### Uploading the Required Documents to Trop-Med Documents Uploading

- Degree Certificates (English Translated)
- Academic Transcripts (English Translated)
- Applicant's Photo (jpg, jpeg, png)
- A Copy of Passport
- Curriculum Vitae (C.V.) or Resume
- English Proficiency Score Report (valid within 2 years prior to application) - if N/A you can apply and enrol then pass the test within the first semester.

ONLINE APPLICATION FOR  
**FOREIGN**  
STUDENTS



PLEASE SCAN ME

ONLINE APPLICATION FOR  
**THAI**  
STUDENTS



PLEASE SCAN ME



## Curriculum

- Number of credits (Not less than) 24 credits
- Curriculum Structure

The curriculum structure is set in compliance with Announcement of Ministry of Education on the subject of Criteria and Standards of Graduate Studies B.E. 2558 Diploma as below:

Required Courses	20	Credits
Elective Courses (at least)	4	Credits
	24	Credits

### Required Courses: 20 credits

Code	Title	Credit
TMMH501	Principal of Tropical Medicine and Hygiene	3(3-0-6)
TMMH502	Food-and Water-borne Diseases: Soil-transmitted Helminthiases	3(3-0-6)
TMMH503	Food-and Water-borne Diseases: Tissue Parasites	2(2-0-4)
TMMH504	Important Mosquito-borne Diseases	3(3-0-6)
TMMH505	Non-mosquito Vector-borne Diseases and Zoonoses	2(2-0-4)
TMMH506	Human Immunodeficiency Virus Related Diseases and Sexually Transmitted Diseases	2(2-0-4)
TMMH507	General Health Problems and Common Diseases in the Tropics	2(2-0-4)
TMMH508	Medical Parasitology and Entomology	3(2-2-5)
TMMH507	Advanced Microbiology	1(1-0-2)
TMMH508	Travel Medicine I	1(1-0-2)
TMMH509	Clinical, Community and Laboratory Approach & Practice	2(0-4-2)





### Elective Courses not less than 4 credits

Code	Title	Credit
TMCD509	Medical Problems in the Tropics	2 (2-0-4)
TMCD503	Introduction to Clinical Research	1(1-0-2)
TMTP501	Paediatric Problems in the Tropics	2 (2-0-4)
TMHG508	Epidemiological Investigation	2 (1-2-3)
TMHG502	Medical Biostatistics	1 (0-1-2)
TMSE502	Applied Social Science in Tropical Medicine	2(2-0-4)
TMNU518	Human Nutrition	2(2-0-4)
TMID533	Medical Parasitology and Entomology	3(2-2-5)
TMMI507	Advanced Microbiology	1(1-0-2)
TMMI508	Practical Microbiology	2(0-2-1)
TMMI509	Diagnoses of Tropical Infections by Immunological and Molecular Biological Methods	2(1-2-3)
TMID510	Statistics for Clinical Research	3(2-2-5)
TMCD530	Tropical Infectious Diseases Case Study	1(0-2-1)
TMCD532	Travel Medicine II	2(2-0-4)





## Graduation

- Total time of study should not exceed the study.
- Students must complete their courses as stated in the curriculum with at least 24 credits including core course 20 credits and elective course 4 credits with a minimum cumulative GPA of 3.00.
- Students must meet the English Competence Standard of Graduate Students, Mahidol University defined by the Faculty of Graduate Studies, Mahidol University.
- Students must participate in professional and personal skill development activities of the Faculty of Graduate Studies, Mahidol University.







## Passports and Visa

All international students entering Thailand must possess valid passports. International students should apply for a Non-Immigrant (Educational) visa, which can be extended within Thailand. Contact the Thai Embassy or Consulate in your country for further information.



## Cost of Living

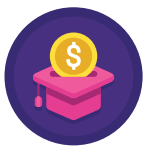
The estimated cost of living in Thailand, including food and accommodation, is approximately 750-800 per month.



## TropMed International House

10th-12th Floors, Chalermprakit Building

For more information, please contact Email: [tmhouse@mahidol.edu](mailto:tmhouse@mahidol.edu)



## Tuition Fee

The affordable and valuable. Approximately 5,000 USD/person (The fee does not include some field trip expense, extended study period beyond 1 year may need extra 300-500 USD registration fee /year)

## For more information about DTM&H

E-mail: [tmbstm@mahidol.edu](mailto:tmbstm@mahidol.edu)

<http://www.tm.mahidol.ac.th/DTM&H/>

Mahidol Bangkok School of Tropical Medicine, 3rd Floor, Chamlong Harinasuta Building Faculty of Tropical Medicine, Mahidol University, 420/6 Ratchawithi Road., Ratchathewi District Bangkok 10400 THAILAND

For more information about Student Life

please visit <http://www.tm.mahidol.ac.th/student-affairs/index.php>



## Student Activity



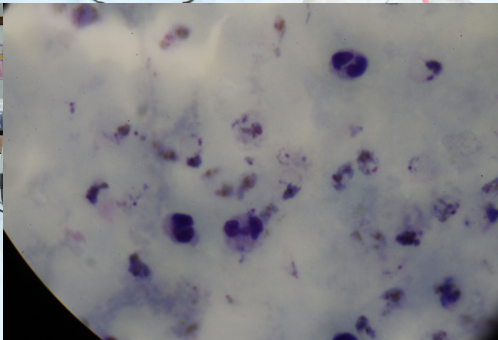


## Student Activity





## Student Activity





## Student Activity





## Student Activity





# For further inquiries and assistances, please contact:

For further inquiries and assistances, please contact:

For more information about DTM&H

please contact

E-mail: [tmbstm@mahidol.edu](mailto:tmbstm@mahidol.edu)

<http://www.tm.mahidol.ac.th/DTM&H/>

Mahidol Bangkok School of Tropical Medicine, 3rd Floor, Chamlong Harinasuta Building  
Faculty of Tropical Medicine, Mahidol University,  
420/6 Ratchawithi Road., Ratchathewi District, Bangkok 10400 THAILAND