

May 2021

ORS channel

21

OFFICE OF RESEARCH SERVICES



Special scoop



Guest speaker

Prof. Nicholas PJ Day, MORU

MORU, WELLCOME, NEW STRATEGIES AND FUTURE PLANS



19TH OF MAY, 2021 : 12.00 - 1.00 PM

CISCO WEBEX

MEETING NUMBER: 158 897 8300

Password: **orschanel21**





May 2021

05

- "World University Rankings
คณะเวชศาสตร์เขตร้อนจะช่วยให้ได้อย่างไร"

*ศ. นพ.บรรจง มไหสวริยะ
อธิการบดีมหาวิทยาลัยมหิดล*

12

- "เตรียมตัว(เตรียมใจ)อย่างไร เมื่อเป็นนักวิจัย
มือใหม่สำหรับทุน NIH"

*รศ. ดร.โรมัส กวาดามูช
ผู้ช่วยอธิการบดีฝ่ายวิจัยและวิชาการ
มหาวิทยาลัยมหิดล*

19

- "MORU, Wellcome, new strategies
and future plans"

*PROF. NICHOLAS PJ DAY
(MORU)*



Follow us



TropMed ORS



ORS channel
VDO&slide



ORS official

Sponsored by



MORU, Wellcome, New Strategies and Future Plans



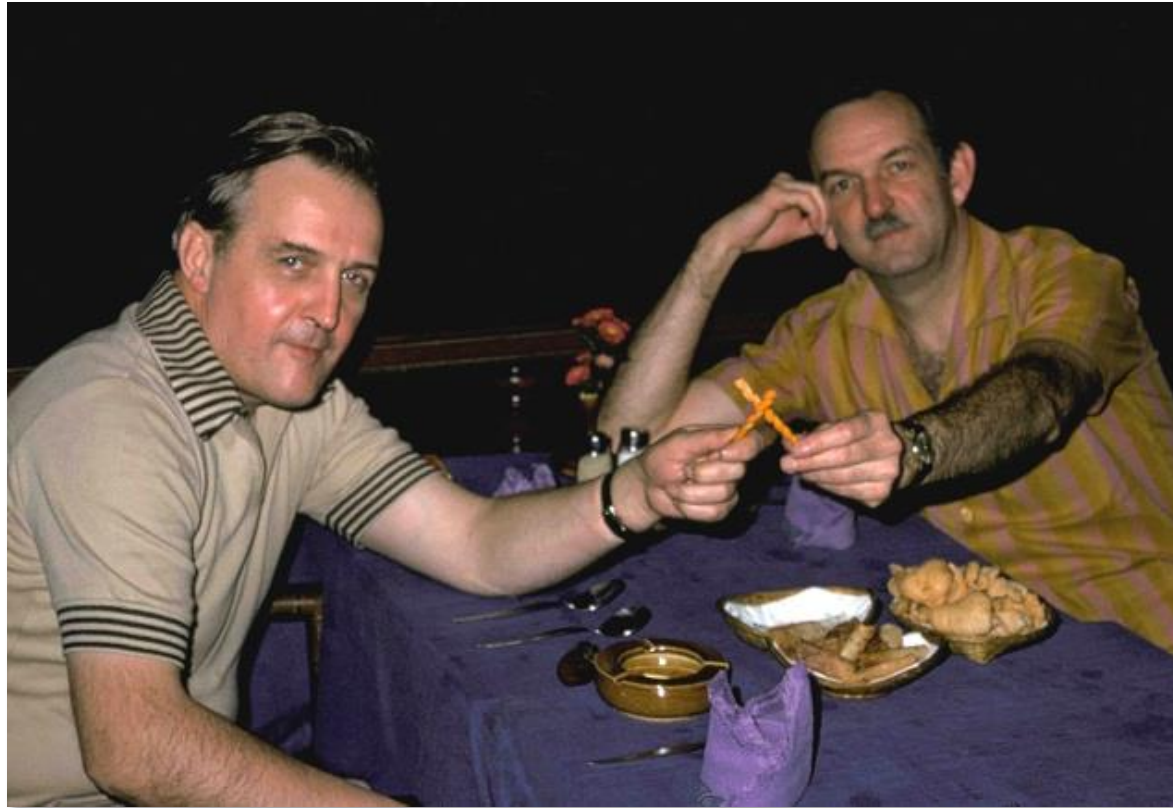
Nick Day 19th May 2021

Today's talk

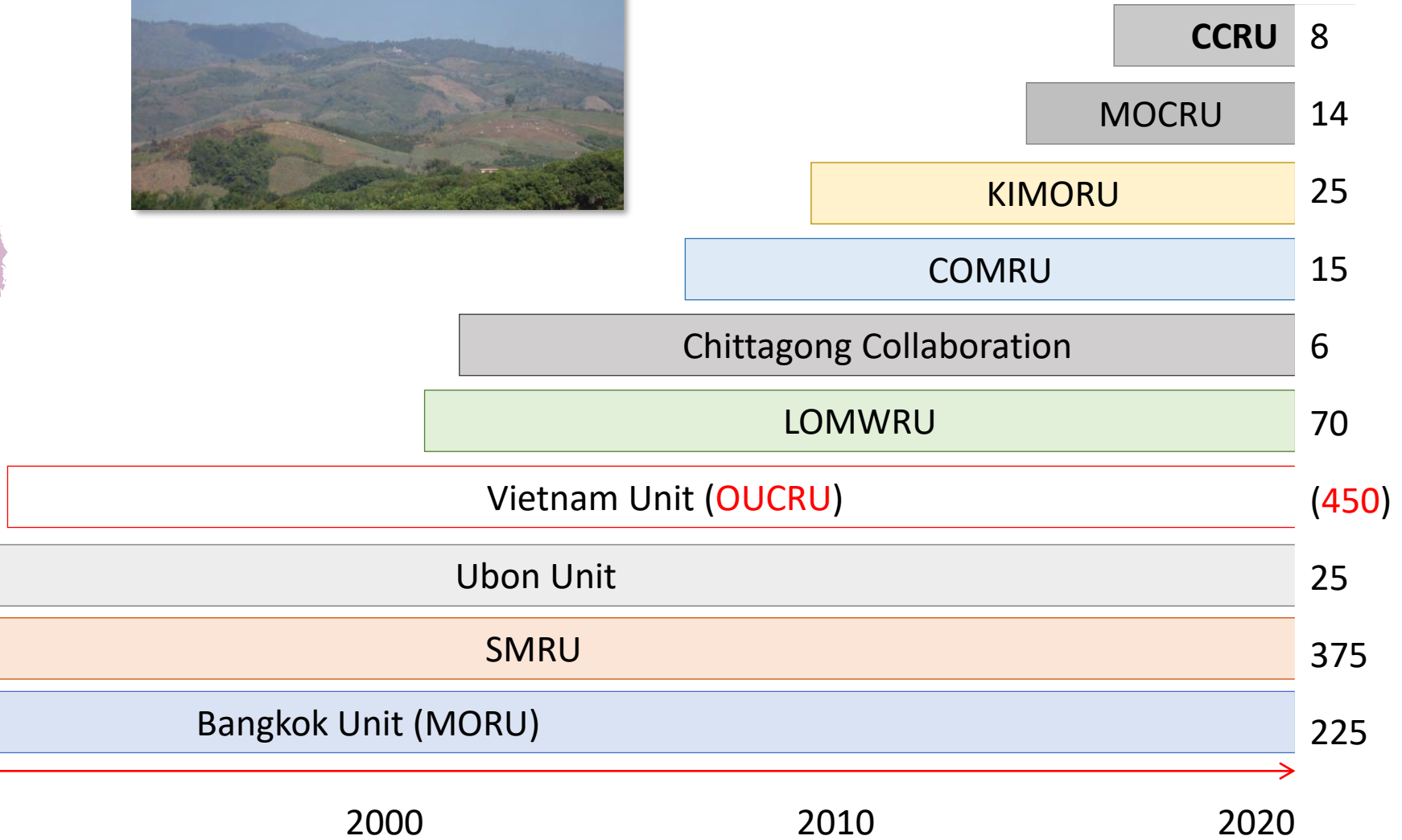
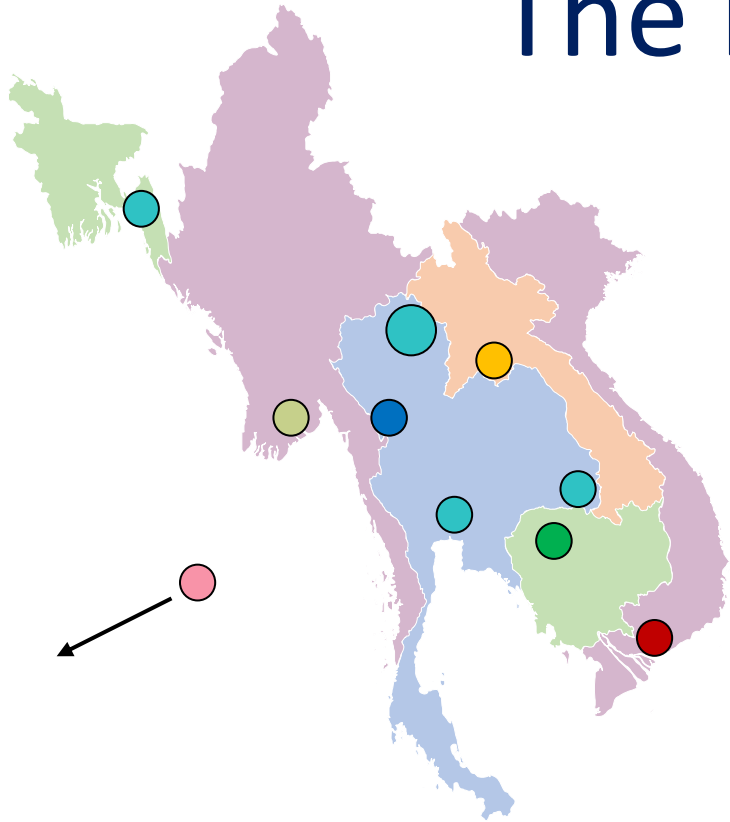
- MORU Introduction
- MORU Strategy
- What we know about the new Wellcome Strategy
- Conclusions

Mahidol Oxford Tropical Medicine Research Unit

A collaboration since 1979 between Mahidol University, the University of Oxford, and the Wellcome Trust



The MORU Tropical Health Network



1979

1986

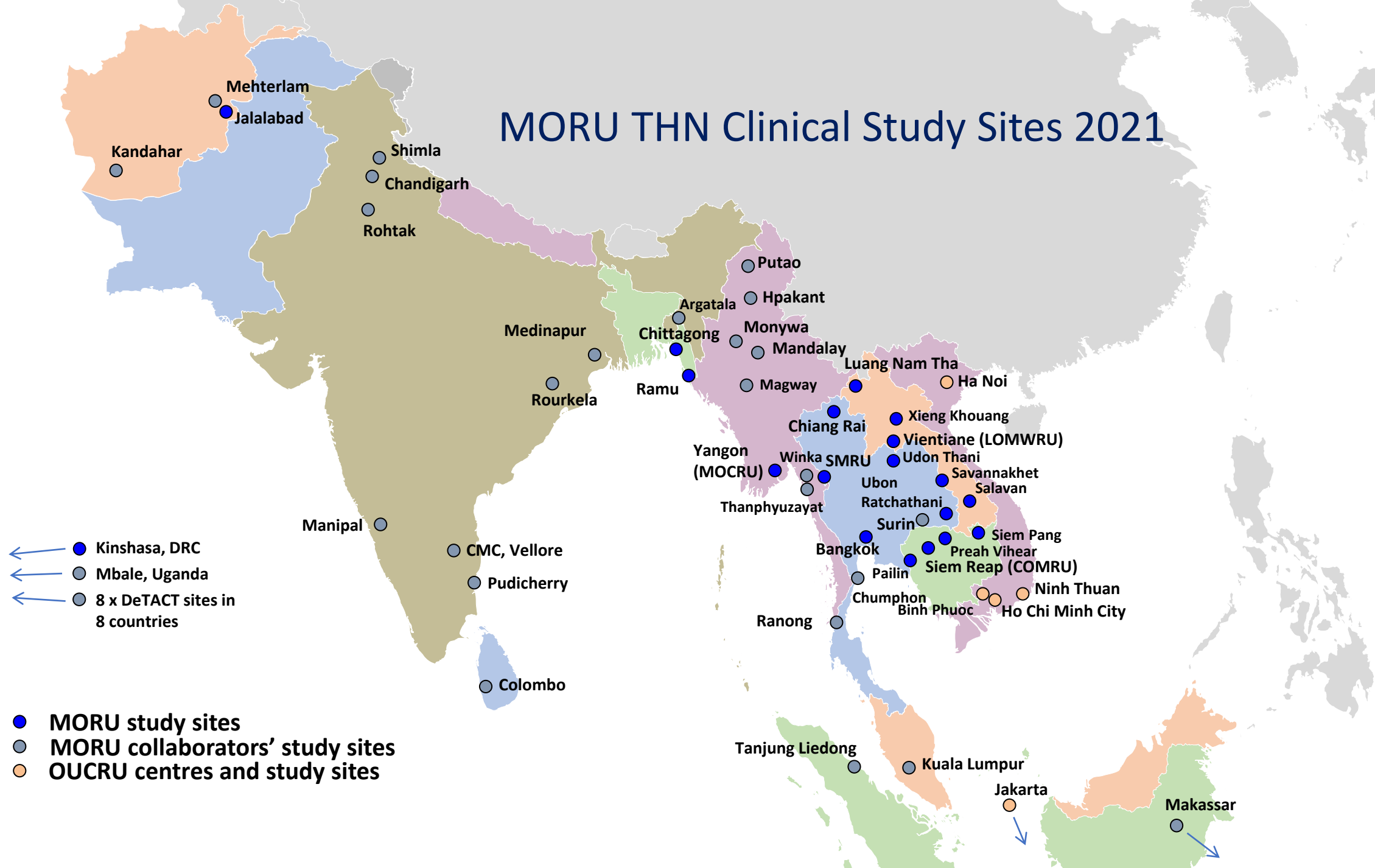
1990

2000

2010

2020

MORU THN Clinical Study Sites 2021



MORU on the Phayathai Campus

60th Anniversary Building

- MORU Network Admin and Logistics Hub
- Malaria & Critical Illness
- Microbiology

50th Anniversary Building

- Pharmacology

Chamlong Building

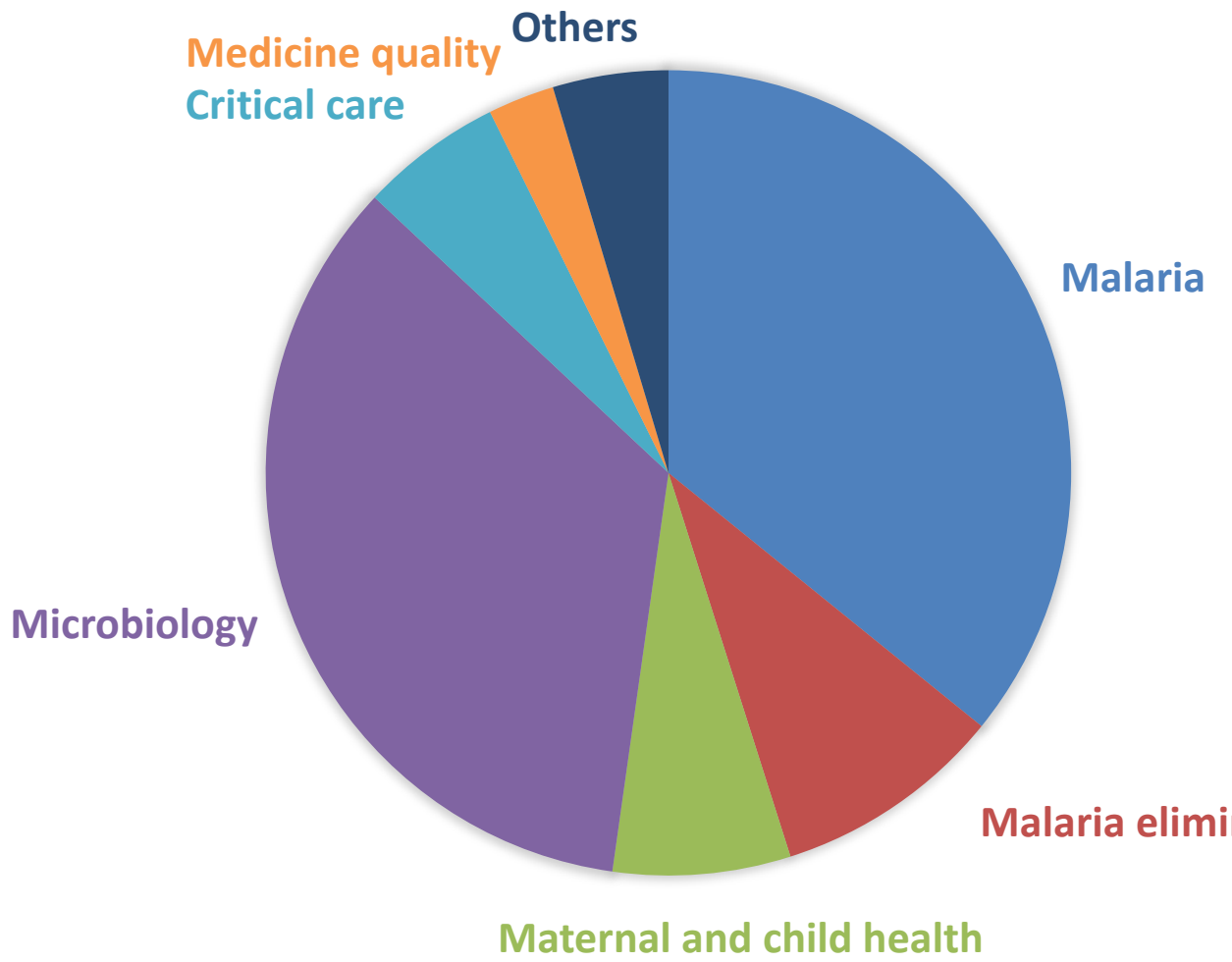
- Mathematical and Economic Modelling (MAEMOD)

Santasiri Building

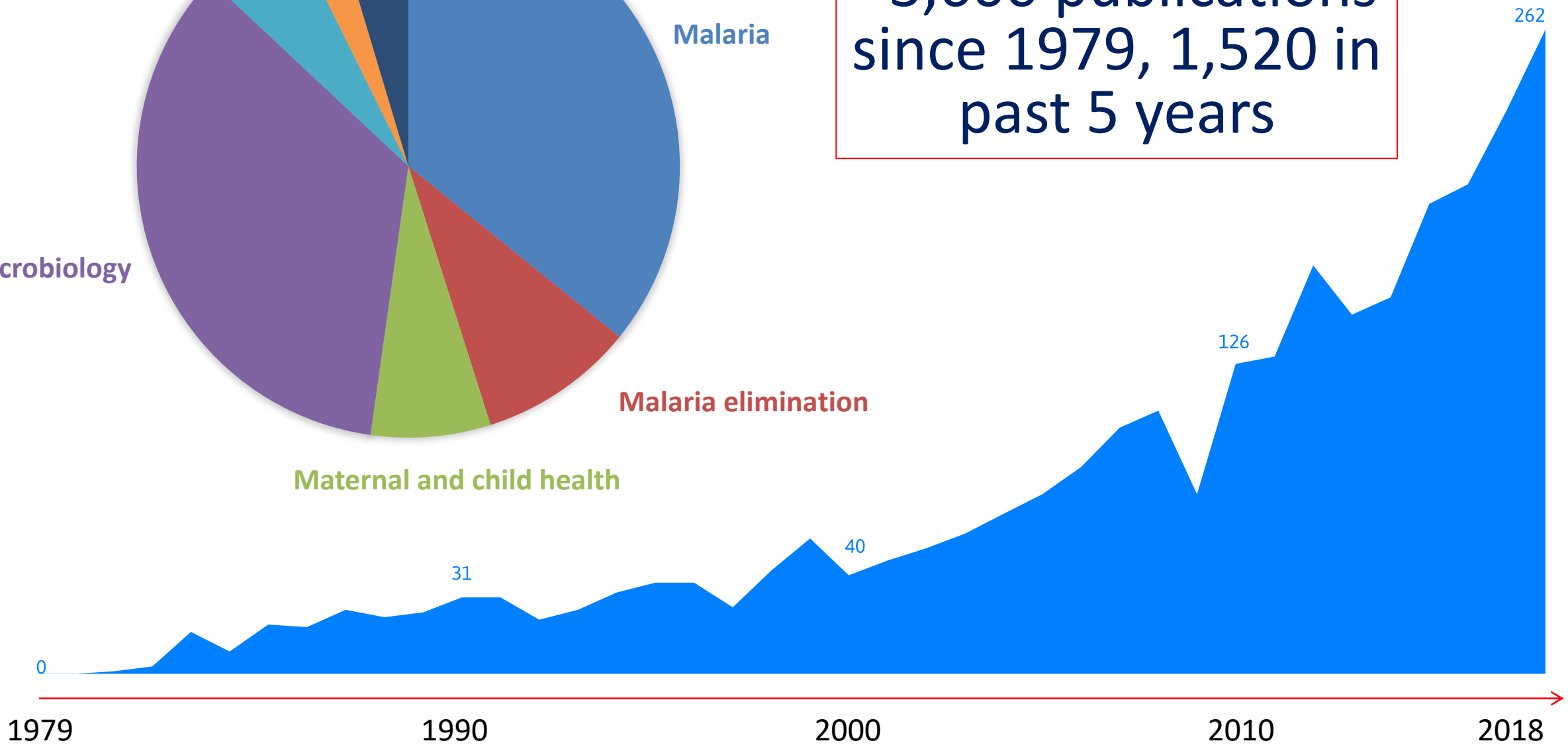
- Clinical Trials Support Group
- Epidemiology
- Bioethics and Engagement

Hospital Building

- Clinical Therapeutics Unit
- Microbiology
- Molecular Malariology
- Specimen Management Centre / WWARN



~3,600 publications since 1979, 1,520 in past 5 years



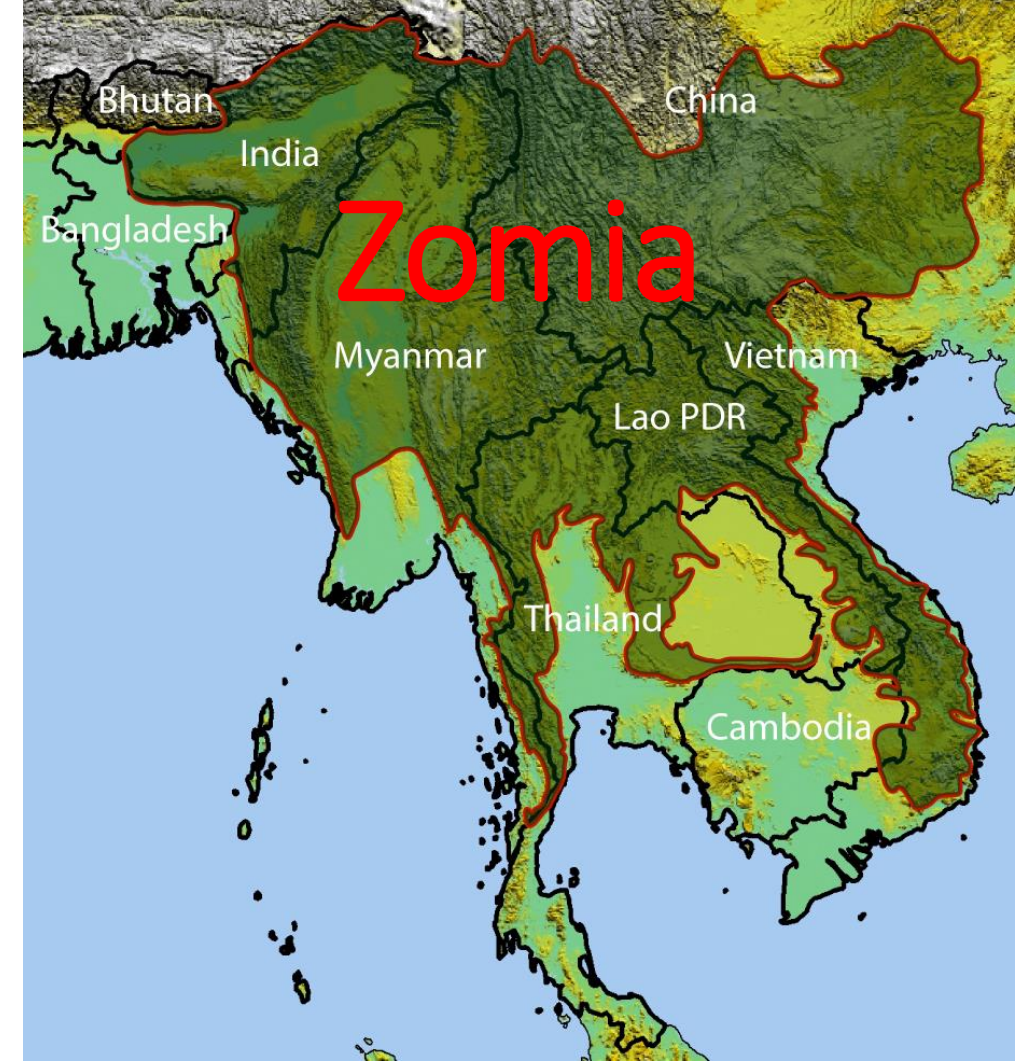
Central objective

Our central objective is to improve the health of people living in the resource-poor tropics



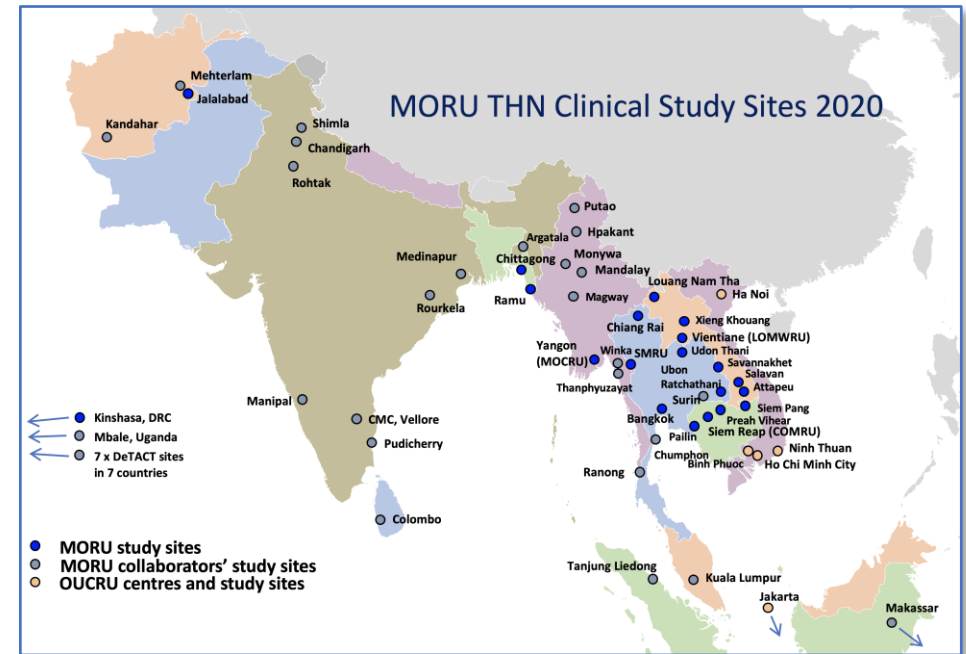
Focus on rural health

- Over 2 billion people live in rural areas in Asia
- Many reside in poor, inaccessible mountainous areas (such as 'Zomia')
- Access to formal health care systems restricted
- Very limited understanding of causes of illness

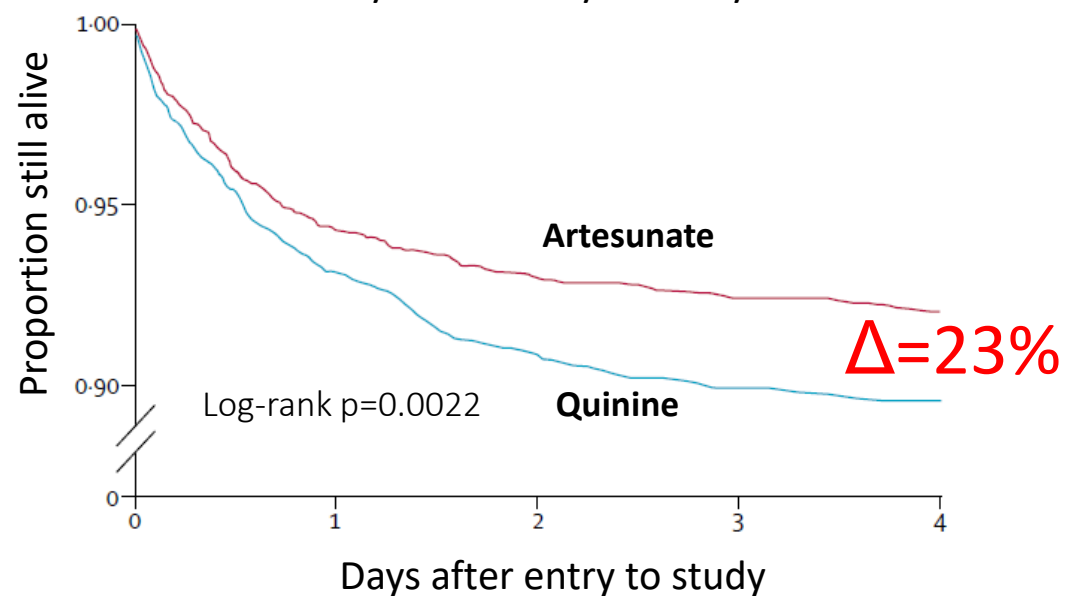
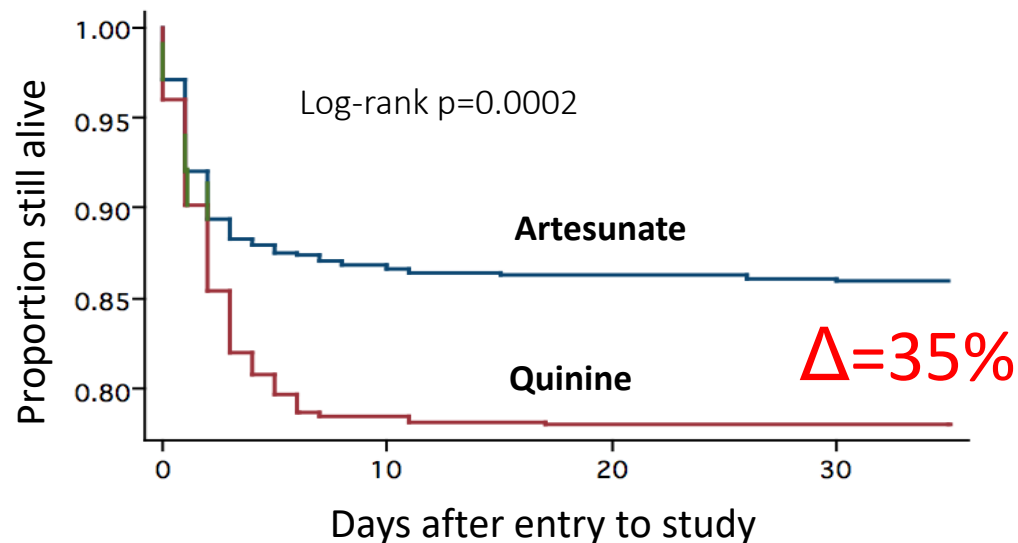


Multicentre collaborative approach

- Power
- Generalisability
- Geographical reach
- Uncover heterogeneity



The power of multicentre studies...

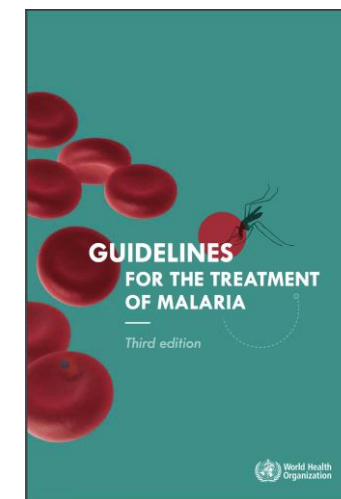


SEAQUAMAT

Asia
4 countries
N=1,461
(202 children)

AQUAMAT

Africa
9 countries
N=5,425
(all children)



Products & projects

Areas of work

Product maps

Tool Kits

The road to health impact

Access challenges

Artesun® (injectable artesunate)

Severe malaria, a life threatening condition, may ensue rapidly if a bout of uncomplicated malaria is not promptly treated. Since 2011, based on the results of the landmark studies **AQUAMAT** and **SEAQUAMAT**, which demonstrated the superiority of injectable artesunate (Inj AS) over intravenous quinine for the treatment of severe malaria in African and Asian patients respectively, WHO guidelines have recommended Inj AS as the preferred medicine for treating this life-threatening condition. In April 2011 Médecins Sans Frontières (MSF) released a policy paper advocating the immediate switch from using injectable quinine to using Inj AS for the treatment of severe malaria, based on the life-saving benefits, safety and convenience.



Photo: Fosun Pharma



Severe Malaria Observatory
A new knowledge sharing platform for severe malaria

- Globally, since WHO prequalification in 2010, over 120 million vials of Inj AS have been delivered to malaria-endemic countries. Given that Inj AS offers a 22%-35% reduction in mortality compared to the alternative, quinine,^{2,3} an estimated >950,000 additional young lives have been saved by this medicine over this time period.

Impact on health
– example of
parenteral
artesunate

Postgraduate Training

Current PhD cohort:

- MORU 52
- FTM 92
- Overlap 16

MORU Postgraduate training programme

Working closely with the Faculty

We will seek funding for studentships



Objective A: Find solutions to important public health problems of regional and global relevance

Theme 1: Defining and understanding big public health problems

- Epidemiology and diagnostics
- Antimicrobial drug resistance (AMR)
- Pathophysiology and pathobiology

Theme 2: Patient care

- Community health
- Critical illness
- Improving treatment

Theme 3: Maternal and child health

- Pregnancy
- Neonatal care
- Child health

Theme 4: Malaria elimination



Objective B: Maximise public health impact of AAP research

Objective C: Build a sustainable, equitable and innovative research network

MORU/OUCRU THEORY OF CHANGE WORKSHOP 21-22 Mar 2019, Chatrium Riverside Hotel, Bangkok

Inputs

'Fair and Equitable Relationships' principle followed

Engagement with institutional partner collaborators

Geographically extensive representative and cross-disciplinary research networks

Equity and diversity framework

Comprehensive training and mentorship programs

Appropriate administrative and research infrastructure

Aligned funder and stakeholder priorities



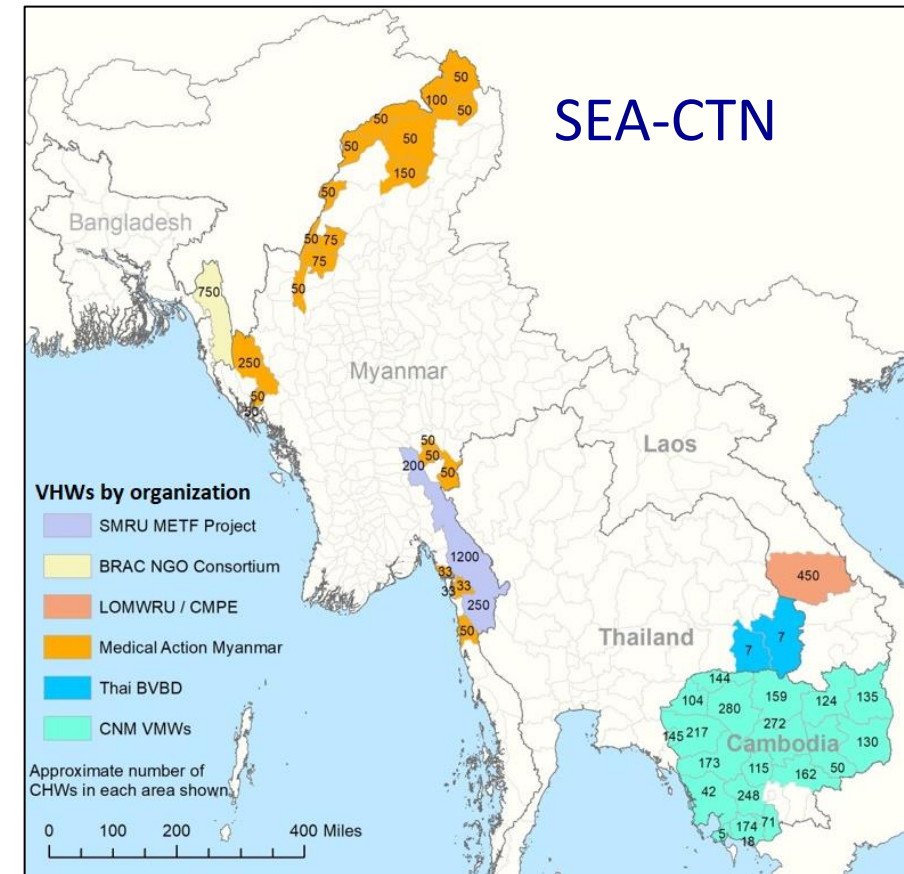
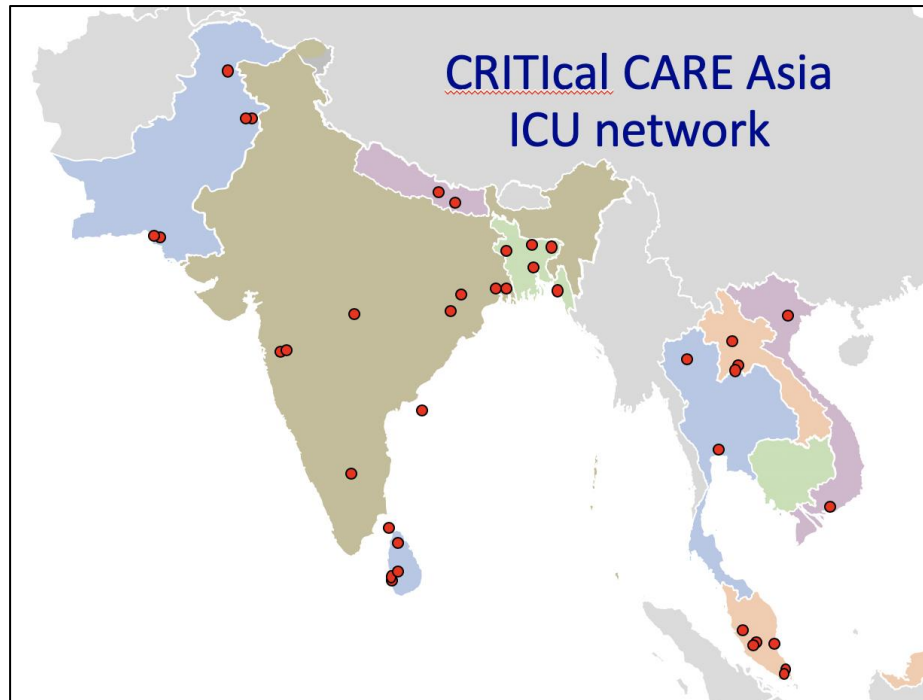
Impact

Improvement in health and well-being of people in the resource-poor tropics

Research infrastructure 2020-2025

Multicentre collaborative clinical research platforms

- The Southeast Asian Community-based Trials Network (SEA-CTN)
- The Collaboration for Research, Implementation & Training in Intensive CARE in Asia (CRITical CARE Asia)
- The Asian Clinical Trial Network (ACTN)



Recent / New Research Programmes and Networks

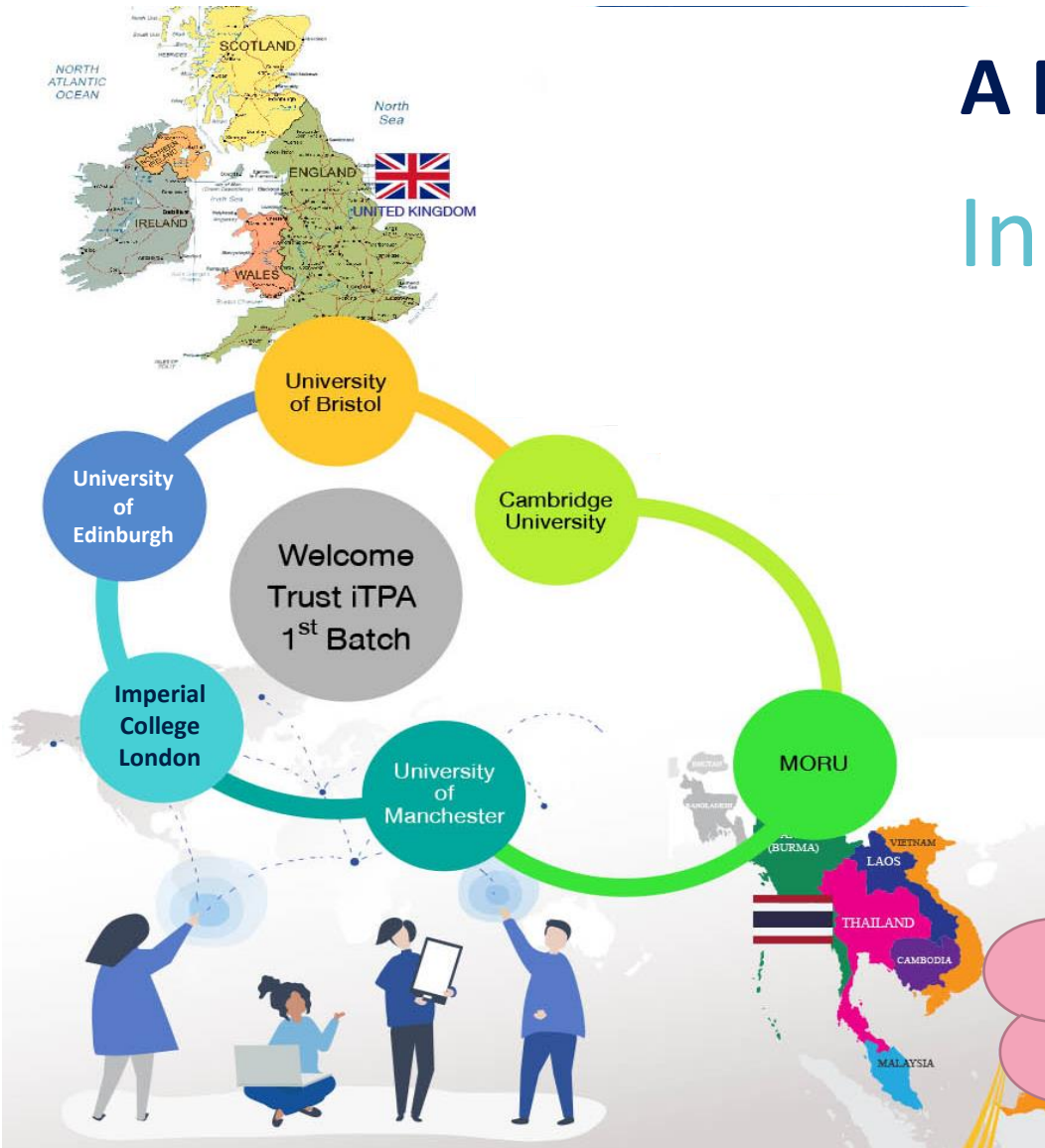
- **Rural Illness Flagship Programme** (SEACTN) – Yoel Lubell
- **Critical Illness Flagship Programme** (CRITical CARE Asia) – Arjen Dondorp
- **DeTACT clinical trials network** – Arjen Dondorp
- **Asian Antimicrobial Drug Resistance Network (ACORN, ACTN, etc..)**
– Direk Limmathurotsakul, Paul Turner, Nick Day
- **MIST** – Jetsumon Prachumsri, Sasithon Pukrittayakamee, Nick Day
- **Institutional Translational Partnership** – Maneerat Ekkapongpisit, Yoel Lubell, Nick Day
- **COVID-19 response**
 - COPCOV, SEBCOV, genomics, testing, mask wearing)
 - Hopefully PLATCOV, Recovery...
– Everyone!

The iTP Network

A Pilot scheme by Wellcome Innovations Innovation for Impact

Key Aim:

“**Maximise the benefit** of science, technology and innovation by **creating a more explicit link** between them and by **removing barriers** to the translation of science to health”



Currently >20 iTP
Network unit around
Europe as well as 1 in
Africa and 1 in Asia
(MORU)

MORU 
Tropical Health Network



Innovation for Impact

Key Success Indicator

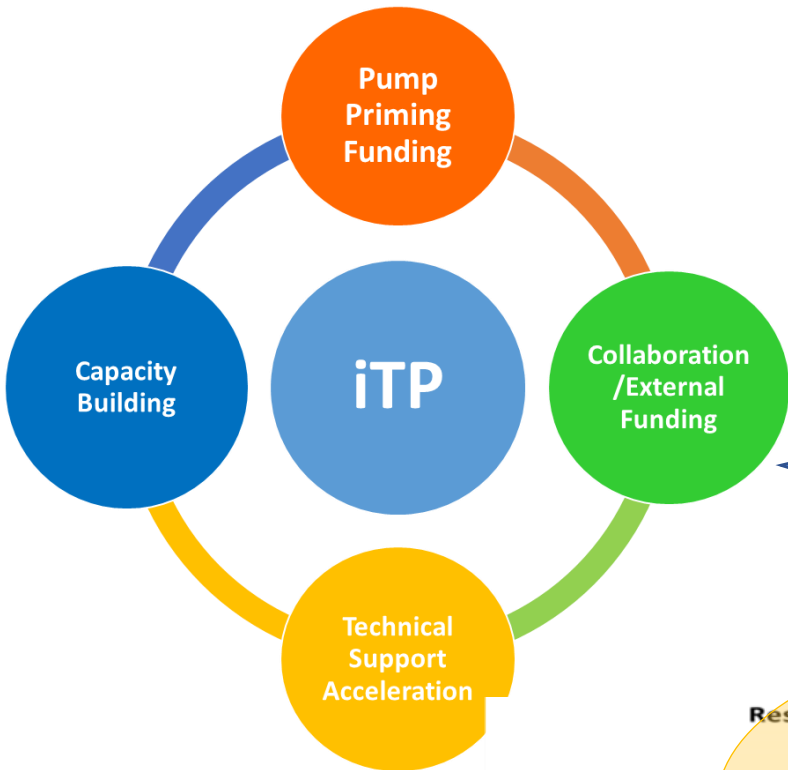
PEOPLE - Make people think about translation

CULTURE – Open and Positive

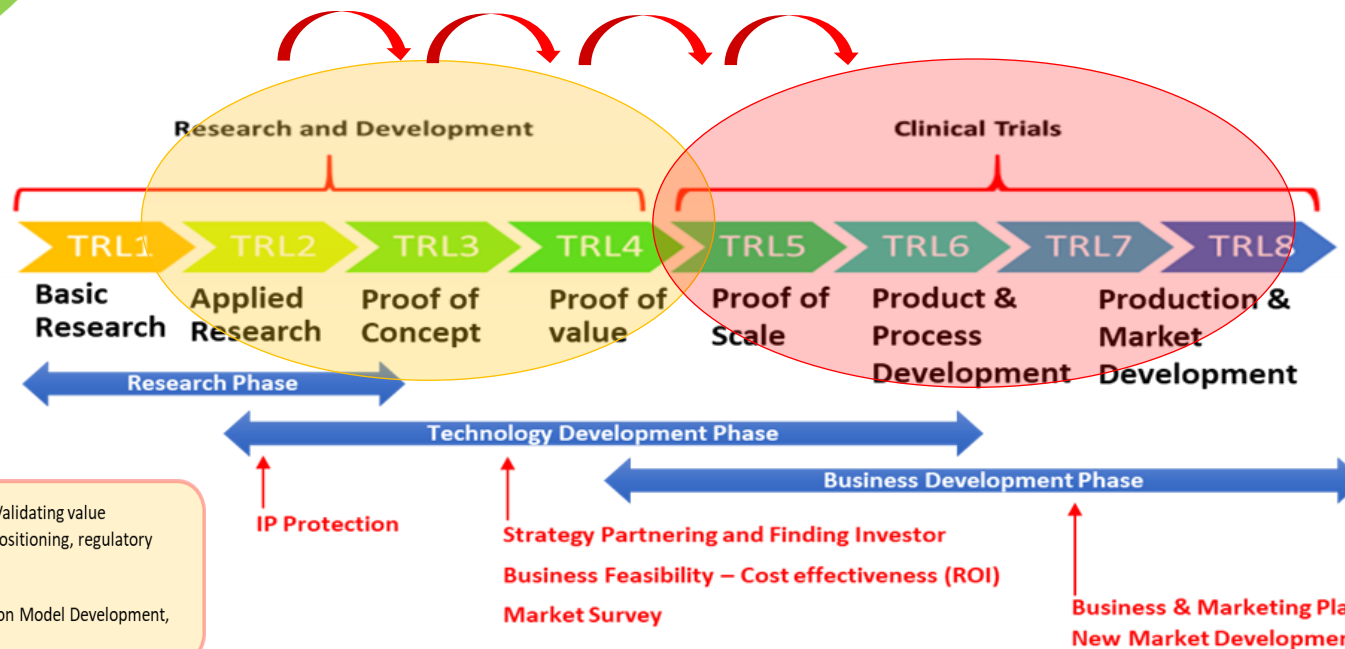
ECOSYSTEM –Infrastructure and Environment



3 yrs Review of iTP@MORU



- 85 Translational Research Projects in the portfolio
- 25 funded projects – 3 external funding linked up by iTP
- 2 completed projects
- 2 received next phase funding
- Capacity building sessions (Design thinking, IP seminars etc.)
- Diagnostic Tools Development Conference.
- Translational Research Community and Network
- **165 researchers in projects benefiting from iTP support.**
- **62 researchers actively engaged in iTP-funded projects (33 from the MORU Network, 13 from FTM and 16 from external organisations).**
- **>200 researchers engaged through iTP held activities.**

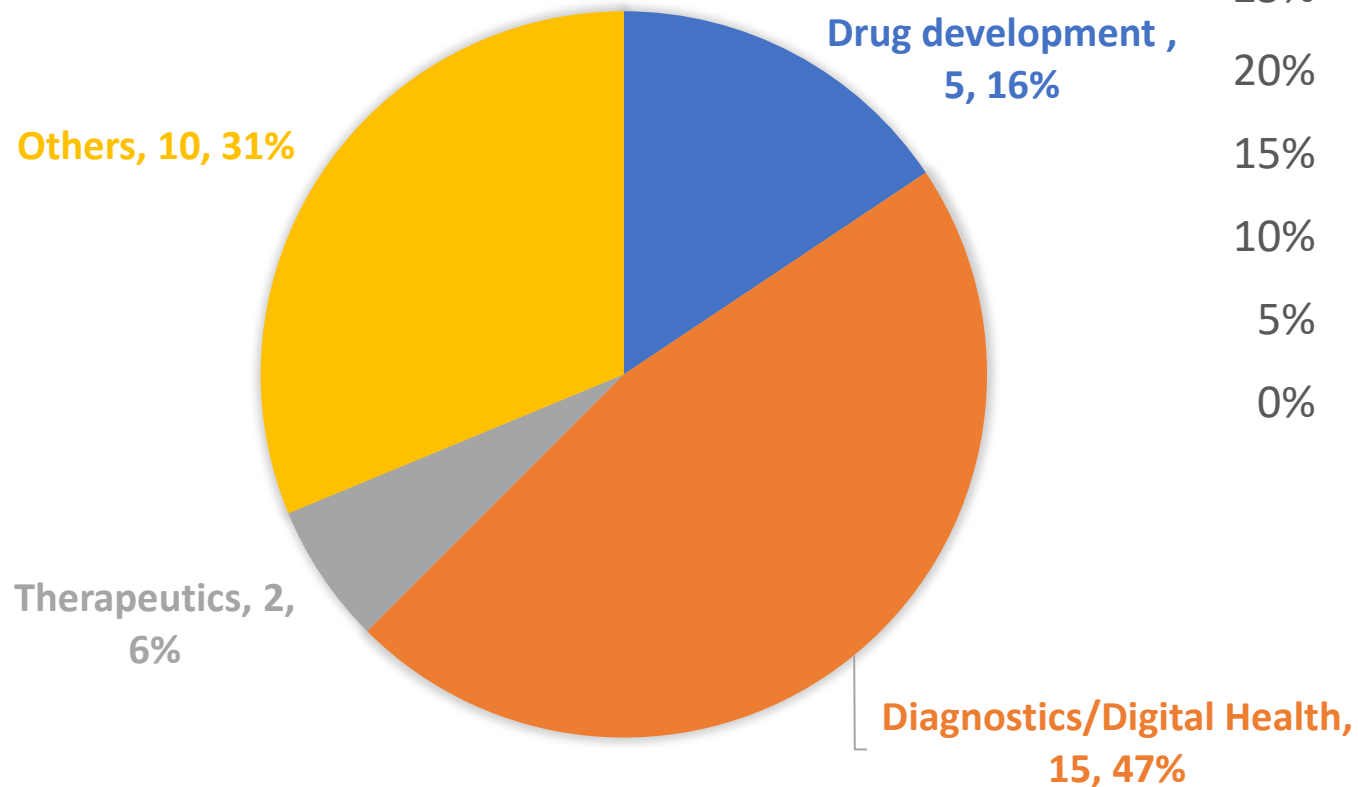


● Early translational Barriers – Proposal Development, Validating value proposition- end user, influencer and beneficiary as well as IP positioning, regulatory issues.

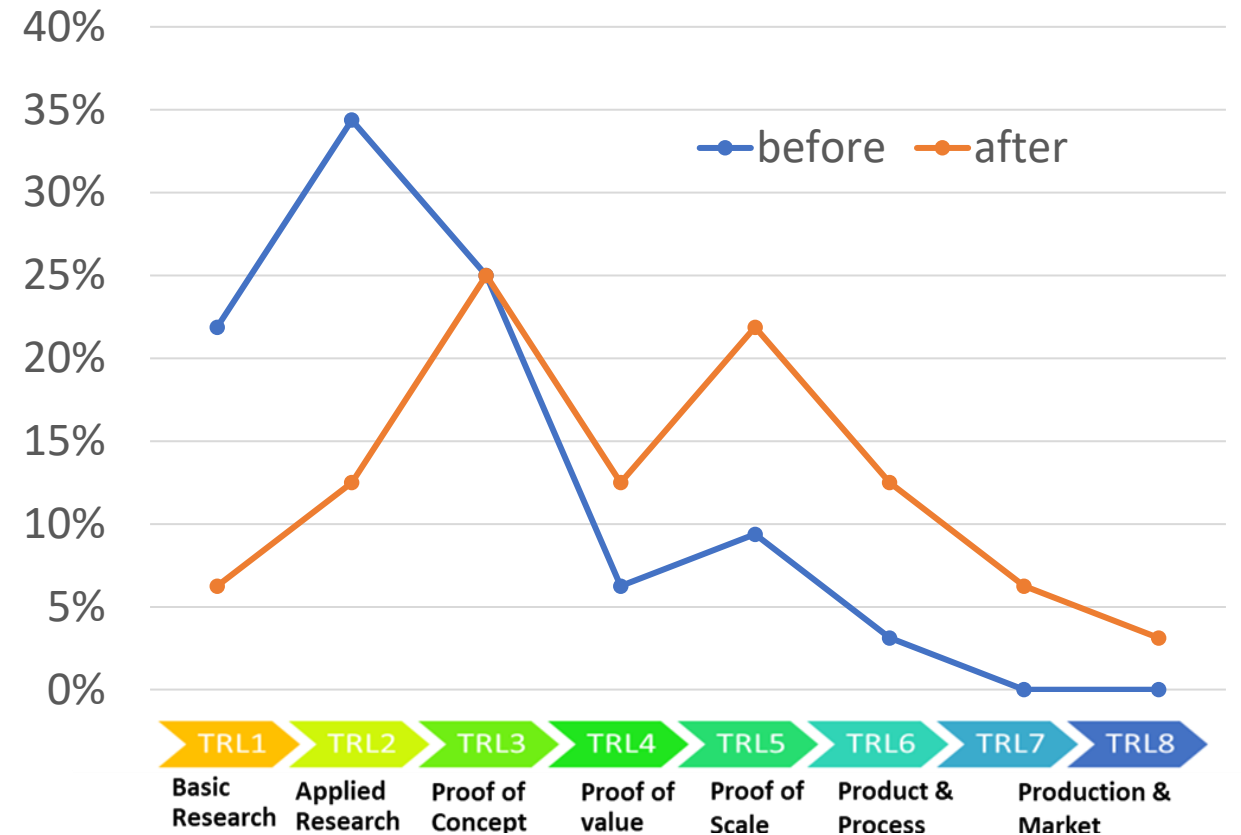
○ Late translational Barriers – Business or Implementation Model Development, Stakeholder engagement.

FTM-iTP Portfolio Landscape

- 32 EOIs/Proposal Submitted
- 5 iTP-Funded Project (On going)
- 1 TSA support
- 2 External Funding through iTP
- 5 in evaluation for iTP funding



FTM-iTP EOIs/Project Landscape by TRL



Public Engagement



- **Public engagement events**
- **Faciliate public/community advisory groups** – we get the members’ input on our projects
 - Young Persons’ Advisory Group - AHC/Siem Reap
 - Tak Province Community Ethics Advisory Group – SMRU
 - Bangkok Health Research Ethics Interest Group - Bangkok
- **AMR Dialogues** – a series of workshops with stakeholders and community members to shape the next Thailand AMR National Action Plan – collaboration with Microbiology (Direk Limmathurasakul et al), Thai FDA
- **Public Engagement bursaries** – grants up to GBP10,000 for researcher led engagements, 14 projects have been awarded so far to Professors, PhD students, researchers
- **Strategy for 2020-25** here: https://zenodo.org/record/3510158#.YKSF_C8Rq8U

-
- Wellcome has a new vision and strategy





Wellcome supports science
to solve the urgent health
challenges facing everyone



Our strategy

- We're taking on **three worldwide health challenges** with programmes of work that will draw on Wellcome's expertise across science, innovation and society to deliver ambitious goals.
- We'll also support a **broad programme of discovery research** across a wide range of disciplines with the potential to make unanticipated discoveries about life, health and wellbeing – both to help us tackle these challenges, and drive advances in other areas.
- **Diversity and inclusion**, and **research culture**, are central to our strategy and will be embedded into the work we fund and do.

- [Mental health](#): Working with people who have lived experience of mental health issues to improve research, understanding and treatment of mental health.
- [Infectious disease](#): Working with communities affected by escalating infectious diseases to bring those diseases under control and stop epidemics.
- [Climate and health](#): Working with the communities most affected by climate change to explore the harmful effects of global heating on health, and to use research to develop new ways of protecting people's health.

Upcoming schemes



Our three new schemes will enable researchers to generate new health-related insights, tools and technology. They will support:

- early-career researchers who want to develop their research capabilities (from project design to delivery), carry out innovative research and build links with other researchers
- mid-career researchers who want to develop their independence and leadership skills, and run their own research programme or project
- established researchers and teams who want to pursue bold and innovative research or tool and technology development.

As announced, not well suited to researchers in LMICs



To find out more, visit www.wellcome.org/strategy

In Conclusion...

Theme 1: Defining and understanding big public health problems

Theme 2: Patient care

Theme 3: Maternal and child health

Theme 4: Malaria elimination

Wellcome Strategy

- A big change
- Still evolving
- May also be a big opportunity

MORU Strategy

- Themes 1 - 4
- Collaborative research
- Covid-19
- Training

