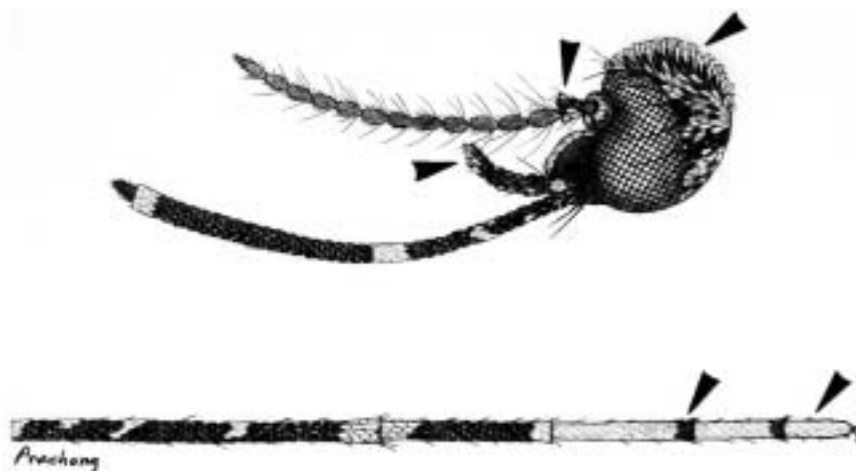


KEY TO THE SPECIES OF *AEDEOMYIA* SUBGENUS *AEDEOMYIA*
ADULT FEMALES

Characters: Wing with vein 1A reaching margin well beyond base of crossvein m_{cu}; upper calypter with setae; prespiracular setae absent; postspiracular area without setae and scales; antennal flagellomeres short and thick, basal flagellomere with prominent scale-tuft; apices of mid- and hindfemora with large tufts of sub-erect scales



1. Pale scales on palpomere 4 and flagellomere 1, erect head scales and scutum white
2. Hindtarsomere 3 with an apical dark band, tarsomere 5 entirely pale



Ad. catasticta

KEY TO THE SPECIES OF *FICALBIA* ADULT FEMALES

Characters: Wing with vein 1A reaching margin well beyond base of crossvein m_{cu}, or if only slightly beyond crossvein m_{cu} then upper calypter with setae; postspiracular setae absent; alula with fringe of narrow erect scales



1. Antennal flagellomere 1 approximately
3 times length of flagellomere 2
2. Maxillary palpus as long as clypeus



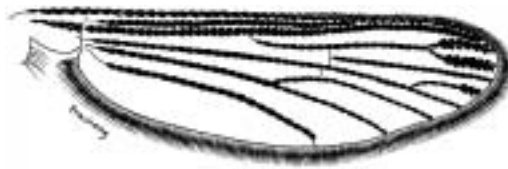
Fi. minima

KEY TO THE SPECIES OF *MIMOMYIA* ADULT FEMALES

Characters: Wing with vein 1A reaching margin well beyond base of vein m_{cu}, upper calypter with setae; prespiracular setae absent; postspiracular setae absent; alula bare or with broad, flat decumbent scales

Wing speckled with dark and pale scales

Wing with only dark scales

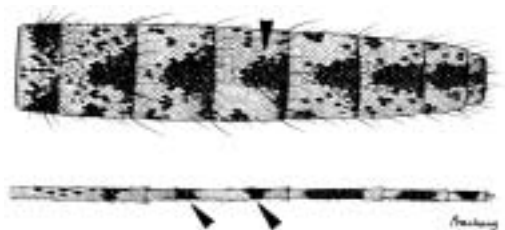


Subgenus *Etorleptomyia*

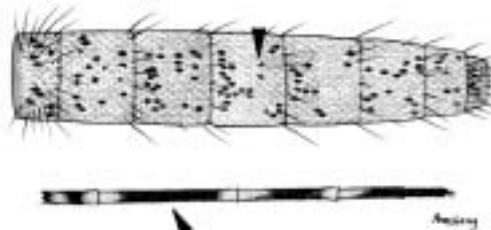
➞ To PLATE 4

1. Abdominal terga with median patches dark scales
2. Hindtarsomere 2 with two dark bands

1. Abdominal terga without median patches of dark scales
2. Hindtarsomere 2 with one dark band



Mi. luzonensis



Mi. elegans

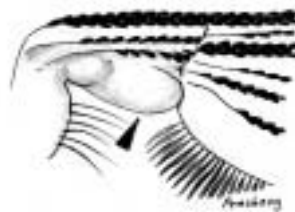
From PLATE 3: Wing with only dark scales

1. Antennal flagellomere 1 as long as flagellomere 2
2. Alula with patch of broad scales



Subgenus *Ingramia*
Mi. fusca

1. Antennal flagellomere 1 approximately two times length of flagellomere 2
2. Alula bare



Subgenus *Mimomyia*

1. Hindtarsomeres entirely dark
2. Scutum with dorsocentral setae strongly developed



Mi. hybrida

1. Hindtarsomeres not entirely dark
2. Scutum without dorsocentral setae or present only on anterior margin



➔ To PLATE 5

PLATE 5

From PLATE 4: Hindtarsomeres not entirely dark; scutum without dorsocentral setae or present only on anterior margin

1. Maxillary palpus largely yellow-scaled
2. Scutum entirely dark-scaled
3. Setae present along posterior margin of mesepimeron



Mi. aurea

1. Maxillary palpus largely dark-scaled
2. Scutum with broad stripes of yellow scales along lateral margins
3. Setae absent along posterior margin of mesepimeron



Abdominal terga dark purple with lateral pale patches



Mi. chamberlaini

Abdominal terga dark purple with median pale patches, forming continuous median stripe on posterior segments



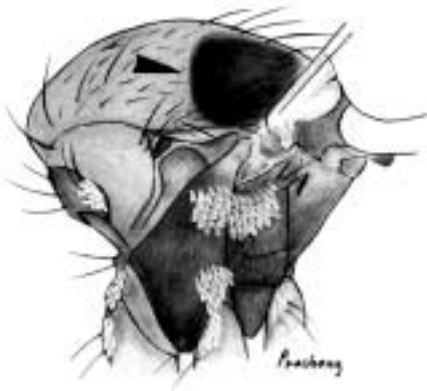
Mi. chamberlaini metallica

KEY TO THE SPECIES OF *HODGESIA* ADULT FEMALES

Characters: Wing vein 1A reaching posterior margin before or at most very slightly beyond base of crossvein mcu; upper calypter bare; veins R_{2+3} , R_2 , and R_3 with long erect scales with forked tips; vein R_{2+3} equal or shorter than vein R_2 ; wing membrane with conspicuous microtrichia

Scutum yellow with large brown oval spot in front of wing root

Scutum reddish brown without large brown oval spot in front of wing root



Ho. bailyi



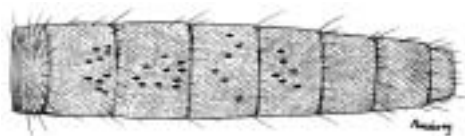
Ho. lampangensis
and *Ho. malayi*

PLATE 7

KEY TO THE SPECIES OF *COQUILLETTIDIA* SUBGENUS *COQUILLETTIDIA*
ADULT FEMALES

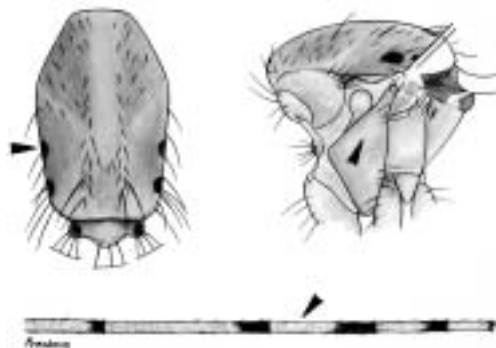
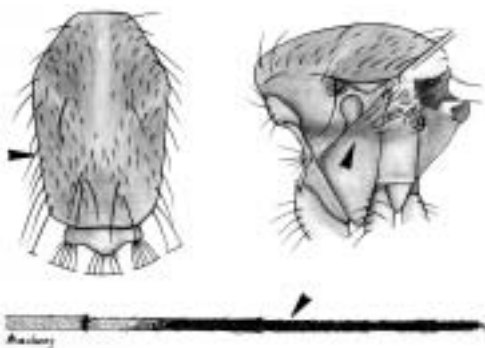
Characters: Wing with vein 1A reaching margin well beyond base of crossvein m_{cu}, upper calypter with setae; prespiracular setae absent; postspiracular setae absent; abdominal terga and wing with dark, metallic purple or yellow scales; pulvilli absent

- | | |
|---|--|
| <ol style="list-style-type: none"> 1. Wing dark-scaled, metallic purple 2. Abdominal terga II-IV and/or V dark purple | <ol style="list-style-type: none"> 1. Wing yellow-scaled 2. Abdominal terga II-V entirely yellow-scaled or with scattered dark or dark purple scales |
|---|--|



Cq. crassipes

- | | |
|---|--|
| <ol style="list-style-type: none"> 1. Integument of supraalar area pale 2. Thoracic pleura with dark stripe from lower postpronotum to mesokatepisternum 3. Hindtarsomeres 3-5 entirely dark | <ol style="list-style-type: none"> 1. Integument of supraalar area dark 2. Thoracic pleura uniformly pale 3. Hindtarsomeres 3-5 not entirely dark |
|---|--|



Cq. ochracea

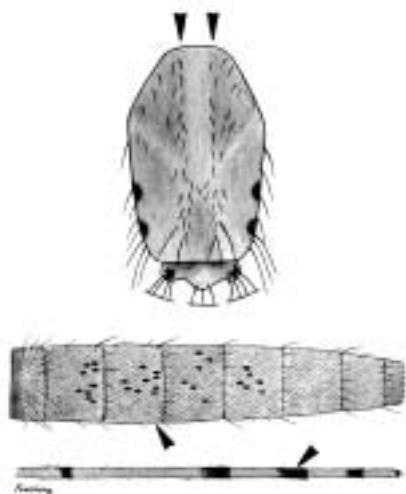
To PLATE 8

PLATE 8

From PLATE 7: Integument of supraalar area dark; thoracic pleura uniformly pale; hindtarsomeres 3-5 not entirely dark

1. Scutal integument without pair of submedian dark stripes on anterior half
2. Abdominal terga largely covered with yellow scales
3. Hindtarsomeres with narrow apical dark bands, less than 0.5 of tarsomere length

1. Scutal integument with pair of submedian dark stripes on anterior half
2. Abdominal terga with apical dark bands
3. Hindtarsomeres with broad apical dark bands, at least 0.5 of tarsomere length



Cq. novochracea



Cq. nigrosignata

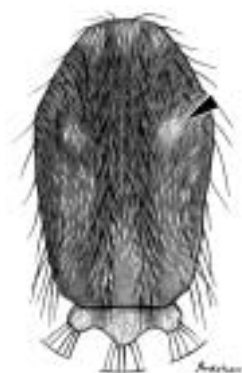
KEY TO THE SPECIES OF *MANSONIA* SUBGENUS *MANSONIOIDES* ADULT FEMALES

Characters: Wing with vein 1A reaching margin well beyond base of crossvein mcu; pre-spiracular setae absent; postspiracular setae present; wing veins with dorsal scales broad and strongly asymmetrical, dark and white scales mixed

Scutum with white scales forming distinct round white spots

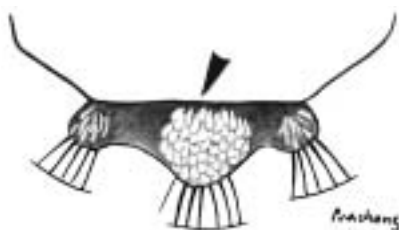


Scutum with white scales not forming distinct round white spots

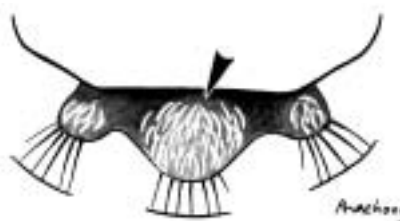


→ To PLATE 10

Scutellum with broad white scales on median lobe



Scutellum with narrow white scales on median lobe



Ma. annulifera

→ To PLATE 11

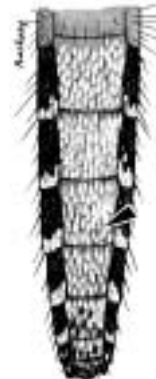
PLATE 10

From PLATE 9: Scutum with white scales not forming distinct round white spots

Abdominal sterna III-VIII with many apical dark scales



Abdominal sterna III-VII pale-scaled, infrequently with dark scales



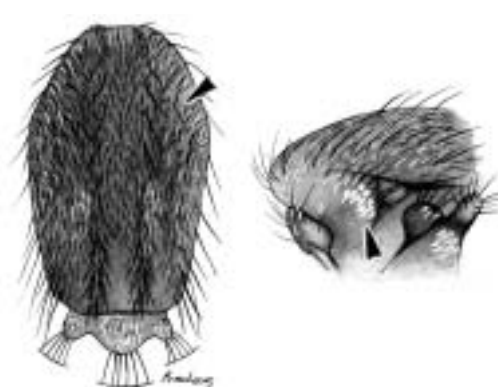
Ma. annulata

1. Scutum with pair of lateral longitudinal stripes of pale scales
2. Postpronotum with narrow pale scales



Ma. uniformis

1. Scutum without pair of lateral longitudinal stripes of pale scales
2. Postpronotum with broad pale scales



Ma. indiana

PLATE 11

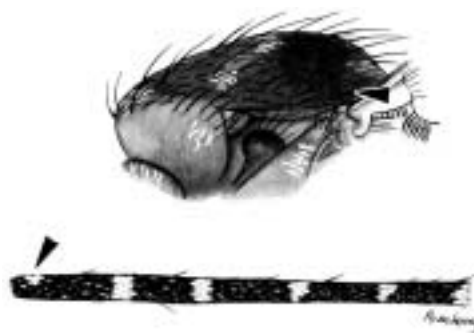
From PLATE 9: Scutellum with narrow white scales on median lobe

1. Supraalar area with patch of narrow white scales
2. Foretibia with complete basal white band



Ma. dives

1. Supraalar area without patch of narrow white scales
2. Foretibia without complete basal white band



Ma. bonneae